

# Details

COLLECTION BOOK  
— *number 7*

**Abacus**





## Sommario — *Contents*

T030 <i>Modular system</i>	04 –17
Selecta <i>Modular system</i>	18 –29
Collezioni giorno <i>Day collections</i>	30 –97
Divani <i>Sofas</i>	98 –123
Armadio al centimetro <i>Wardrobe</i>	124 –161
Cabine armadio <i>Walk-in wardrobes</i>	162 –167
Letti, complementi notte <i>Beds, night complements</i>	168 –185
Disegni tecnici <i>Technical drawings</i>	186 –229
Finiture <i>Finishings</i>	230 –235

## Introduzione — *Introduction*

**IT** — Casa come luogo di arrivo e partenza. Sistema intelligente e vitale, organizzato ma libero, capace di accogliere il presente e il passato, di raccogliere suggestioni e differenze. Lema disegna e realizza le strutture essenziali dello spazio. Oggetti pensati e progettati per accompagnare percorsi privati e raccontare storie personali.

**EN** — Home, for arrival and departure. An intelligent and lively system, organized but free, where the present and past coexist, where suggestions and differences are gathered. Lema draws and creates essential structures of space. Objects have been imagined and designed to be part of personal experiences and to tell personal stories.

**FR** — La maison, comme lieu de départ et de retour. Lieu d'intelligence et de vie, d'ordre et de liberté, capable d'accueillir le présent et le passé, de recueillir suggestions et différences. Lema dessine et réalise les structures essentielles de l'espace. Les objets sont là pour témoigner des aventures personnelles et raconter les histoires intimes.

**DE** — Das Zuhause als Ort der Ankunft und der Abreise. Ein intelligentes und lebendiges System, geordnet aber losgelöst mit der Fähigkeit, die Gegenwart und die Vergangenheit aufzunehmen, sammelt Eindrücke und Unterschiede. Lema entwirft und verwirklicht grundlegende Strukturen des Wohnraumes. Wohlüberlegte und entworfene Objekte, die den Lebensweg begleiten und persönliche Geschichten erzählen.

**ES** — Casa como lugar de llegada y salida. Sistema inteligente y vivo, organizado pero libre, capaz de acoger el presente y el pasado, recoger sugerencias y diferencias. Lema diseña y realiza las estructuras esenciales del espacio. Objetos pensados y proyectados para acompañar recorridos privados y contar historias personales.

**T030**  
—Modular system

















**Selecta**  
—Modular system















**Collezioni giorno**  
—Day collections





















































76 - 77

Fantino







78 - 79

Alton





80 - 81

Taiki









86 - 87

Bice Sign



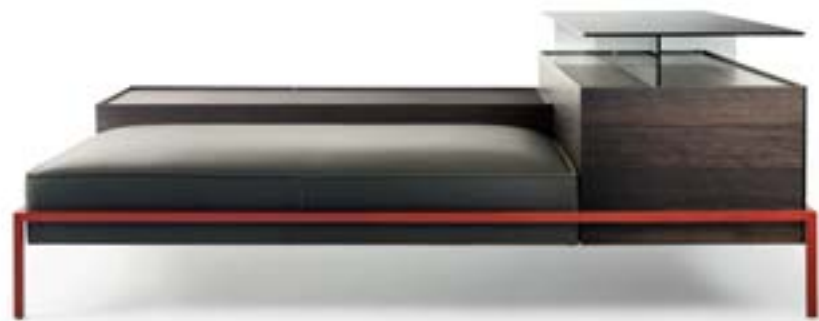












**Divani**  
— Sofas





100 - 101

Kaiwa Open









106 - 107

Mustique Mr. Zheng















116 - 117

Snap









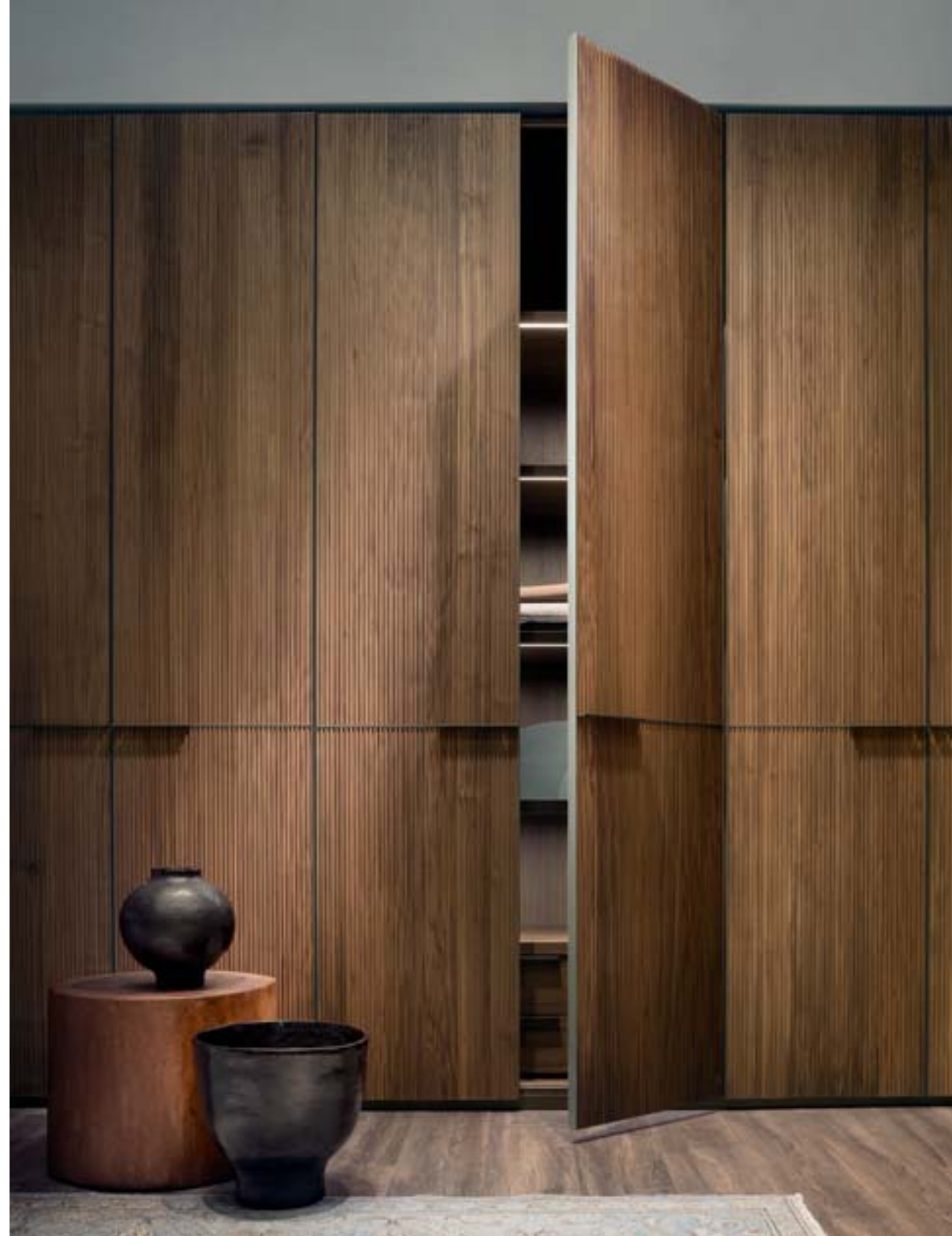
**Armadio al centimetro**  
— *Wardrobe*













































**Cabine armadio**  
— *Walk-in wardrobes*







**Letti, complementi notte**  
—Beds, night complements





















## Disegni tecnici

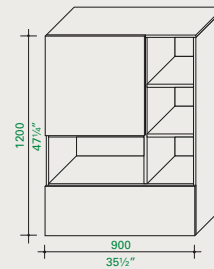
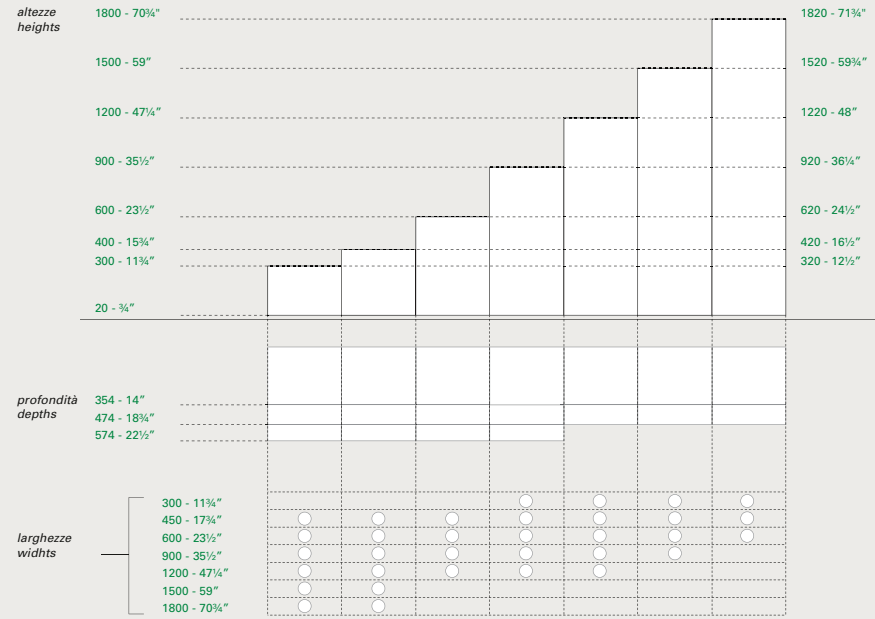
— *Technical drawings*

T030 <i>Modular system</i>	188 –191
Selecta <i>Modular system</i>	192 –193
Collezioni giorno <i>Day collections</i>	194 –211
Divani <i>Sofas</i>	211 –215
Armadio al centimetro <i>Wardrobe</i>	216 –221
Cabine armadio <i>Walk-in wardrobes</i>	222 –223
Letti, complementi notte <i>Beds, night complements</i>	224 –229
Finiture <i>Finishings</i>	230 –235
Lema Air Cleaning System	236 –239

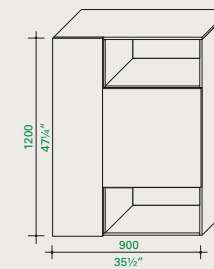
# T030

—Modular system

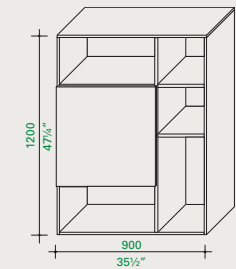
Contenitori a terra  
Basic units



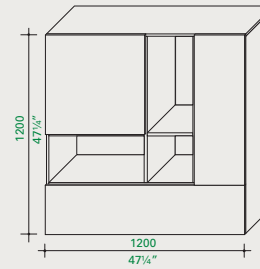
Box B



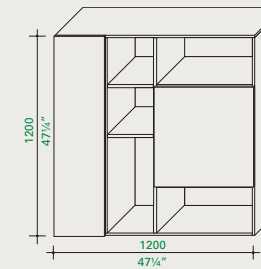
Box C



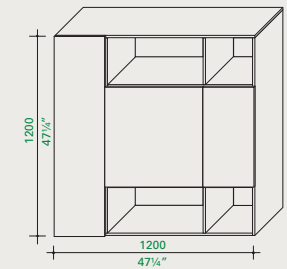
Box D



Box E



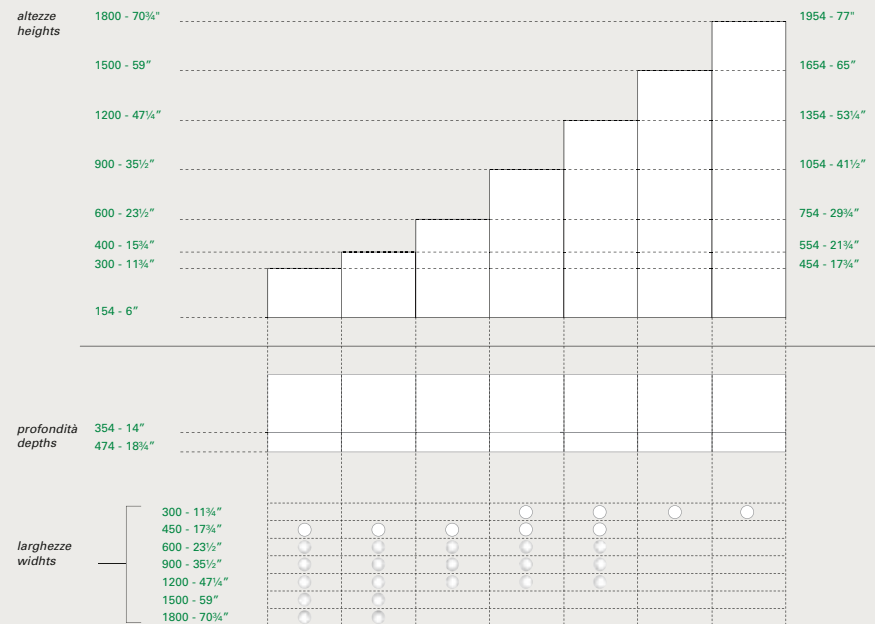
Box F



Box G

Contenitori pensili  
Pensili con zoccolo

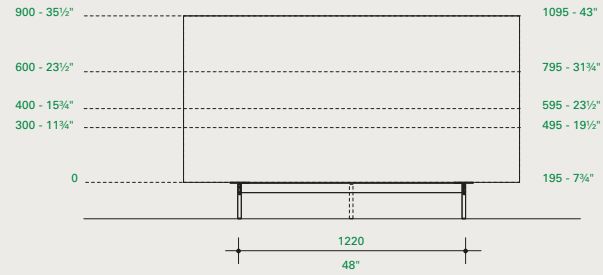
Hanging units  
Hanging with baseboard



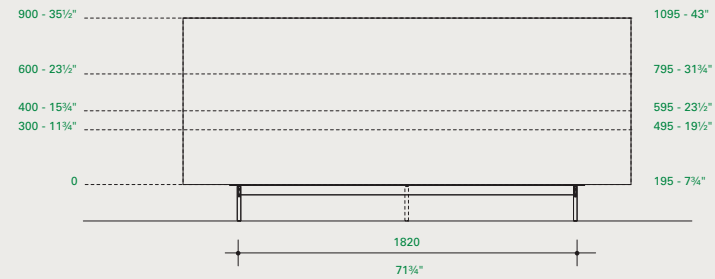


**T030**  
—Modular system

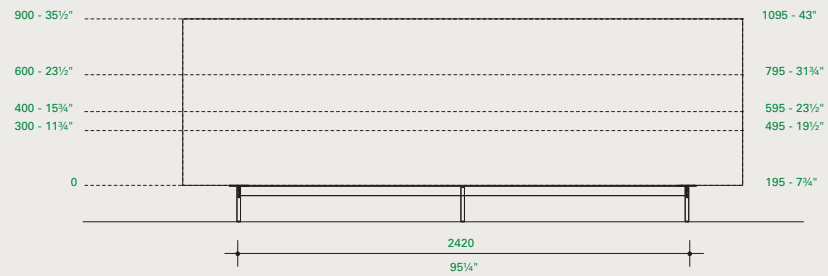
Composizione  
Composition  
L. 1800 - 71½"



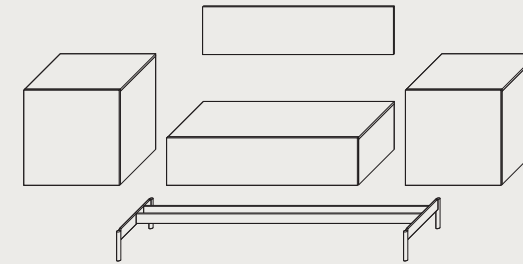
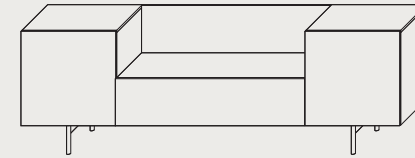
Composizione  
Composition  
L. 2500 - 95"



Composizione  
Composition  
L. 3000 - 118"



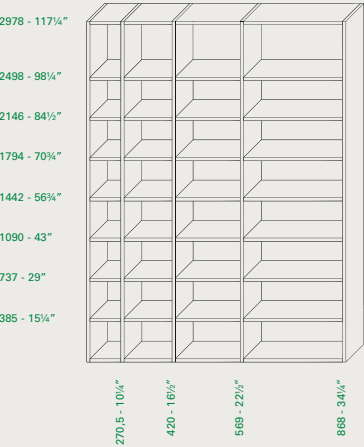
Esempi di composizioni  
Composition examples



**Selecta**

—Modular system

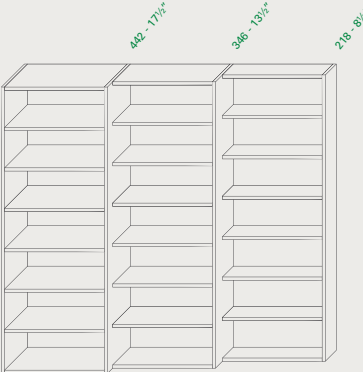
Larghezze e Altezze  
Widths and Heights



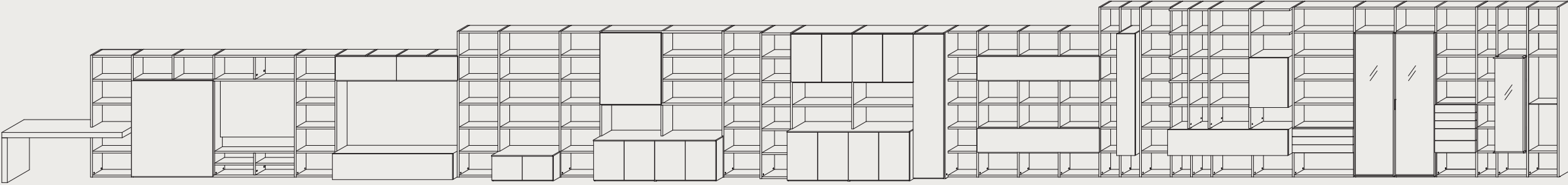
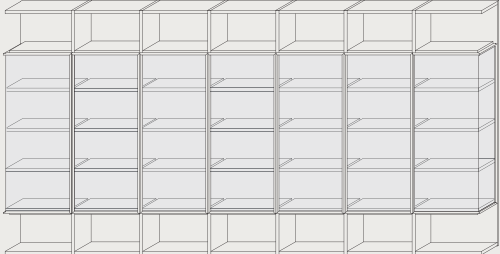
Altezze elementi sporgenti  
Heights jutting out elements



Profondità  
Depths

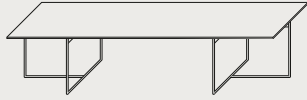


Composizione con anta Glance  
Configuration with Glance door



## Alamo

—David Lopez Quincoces



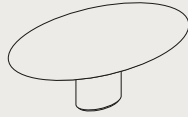
L. 2400 H. 710 P. 980  
W. 94½" H. 28" D. 38½"

L. 3100 H. 710 P. 980  
W. 122" H. 28" D. 38½"

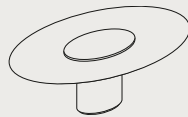
L. 3400 H. 710 P. 980  
W. 133¾" H. 28" D. 38½"

## Bulè

—Chiara Andreotti



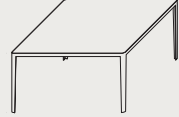
L. 1600 - 1800 - 2000 H. 735  
W. 63" - 70¾" - 78¾" H. 29"



Lazy Susan  
L. 700 - 900 H. 25  
W. 27½" - 35½" H. 1"

## Filo

—David López Quincoces



L. 1400 H. 715 P. 1400  
W. 55" H. 28¼" D. 55"



L. 1800 H. 715 P. 900  
W. 70¾" H. 28¼" D. 35½"

L. 2400 H. 715 P. 1000  
W. 94½" H. 28¼" D. 39¼"

## Graceland

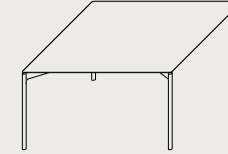
—Christophe Pillet



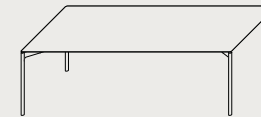
Ø 1585 H. 735  
Ø 62½" H. 29"

## Luce

—Piero Lissoni



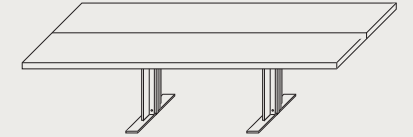
L. 1400 - 1585 H. 735 P. 1400 - 1585  
W. 55" - 62½" H. 29" D. 55" - 62½"



L. 1800 - 2000 - 2200 - 2400 H. 735 P. 1000 - 1090  
W. 70¾" - 78¾" - 86½" - 94½" H. 29" D. 39¼" - 43"

## Memo

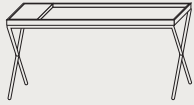
—Piero Lissoni



L. 3500 - 4000 H. 745 P. 1090  
W. 137¾" - 157½" H. 29¼" D. 43"

## Novel

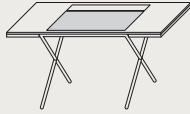
—*Christophe Pillet*



L. 1650 H. 800 P. 460  
W. 65" H. 31½" D. 18"

## Novelist

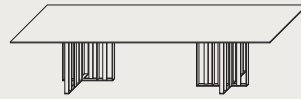
—*Christophe Pillet*



L. 1450 H. 755 P. 610  
W. 57" H. 29¾" D. 24"

## Shade

—*Francesco Rota*

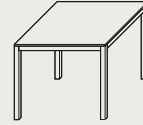


L. 2500 H. 730 P. 1000  
W. 98½" H. 28¾" D. 39¼"

L. 3500 H. 730 P. 1100  
W. 137¾" H. 28¾" D. 43¼"

## Sosia

—*Vittorio Prato*

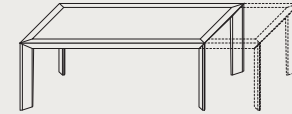


L. 900 H. 730 P. 900  
W. 35½" H. 28¾" D. 35½"

L. 1200 H. 730 P. 1200  
W. 47¼" H. 28¾" D. 47¼"

## Thera

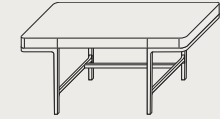
—*Carlo Marelli e  
Massimo Molteni*



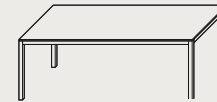
L. 1800 (2400 allungato) H. 730 P. 900  
W. 70¾" (94½" extended) H. 28¾" D. 35½"

## Victor

—*Roberto Lazzeroni*



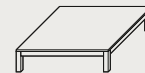
L. 1660 H. 760 P. 700  
W. 65¼" H. 30" D. 27½"



L. 1600 H. 730 P. 900  
W. 63" H. 28¾" D. 35½"

L. 2200 H. 730 P. 900  
W. 86½" H. 28¾" D. 35½"

L. 3000 H. 730 P. 900  
W. 118" H. 28¾" D. 35½"



L. 900 H. 370 P. 900  
W. 35½" H. 14½" D. 35½"

L. 1200 H. 370 P. 1200  
W. 47¼" H. 14½" D. 47¼"

L. 700 H. 370 P. 1200  
W. 27½" H. 14½" D. 47¼"

L. 900 H. 200 P. 900  
W. 35½" H. 7¾" D. 35½"

L. 1200 H. 200 P. 1200  
W. 47¼" H. 7¾" D. 47¼"

## Wow

—*Toan Nguyen*



Ø 1600 - 1800 H. 730  
Ø 63" - 70¾" H. 28¾"

## Alton

—*David Lopez Quincoces*



L. 1030 H. 380 P. 785  
W. 40½" H. 15" D. 31"

## Bai Lu

—*Neri & Hu*



L. 510 H. 695 P. 525  
W. 20" H. 27¼" D. 20¾"

## Bea

—*Roberto Lazzeroni*



L. 555 H. 755 P. 525  
W. 21¾" H. 29¾" D. 20¾"

## Bice

—*Roberto Lazzeroni*



L. 710 H. 720 P. 700  
W. 28" H. 28¼" D. 27½"

## Daiku

—*Piergiorgio Cazzaniga*



L. 475 H. 780 P. 500  
W. 18½" H. 30¾" D. 19¾"

**Eydo**  
—Francesco Rota



L. 1610 H. 880 P. 760  
W. 63½" H. 34¾" D. 30"

**Fantino**  
—Gordon Guillaumier



L. 700 H. 830 P. 790  
W. 27½" H. 32¾" D. 31"

**Hati**  
—Piero Lissoni



L. 510 H. 770 P. 526  
W. 20" H. 30¼" D. 20¾"

**Lady Jane**  
—Christophe Pillet



L. 755 H. 900 P. 925  
W. 29¾" H. 35½" D. 36½"

**Lennox**  
—Gordon Guillaumier



L. 1040 H. 690 P. 810  
W. 41" H. 27¼" D. 32"

**Tabby**  
—Gordon Guillaumier



L. 620 H. 745 P. 540  
W. 24½" H. 29¼" D. 21¼"



L. 585 H. 770 P. 526  
W. 23" H. 30¼" D. 20¾"

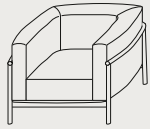


L. 590 H. 400 P. 590  
W. 23¼" H. 15¾" D. 23¼"



L. 630 H. 365 P. 480  
W. 24¾" H. 14¼" D. 19"

**Taiki**  
— Chiara Andreotti



L. 960 H. 700 P. 870  
W. 37¼" H. 27½" D. 34¼"

**Werner**  
— Roberto Lazzeroni



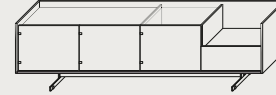
L. 730 H. 790 P. 640  
W. 28¾" H. 31" D. 25¼"

**Wing**  
— Werner Aisslinger

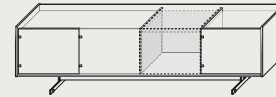


L. 715 H. 730 P. 620  
W. 28¼" H. 28¾" D. 24½"

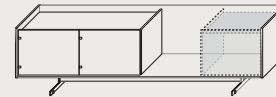
**Cases**  
— Francesco Rota



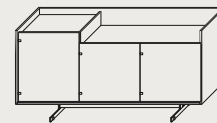
L. 2434 H. 690 P. 480  
W. 95¾" H. 27¼" D. 19"



L. 2434 H. 690 P. 480  
W. 95¾" H. 27¼" D. 19"

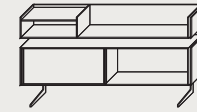


L. 2434 H. 690 P. 480  
W. 95¾" H. 27¼" D. 19"

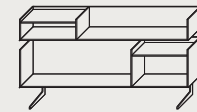


L. 1834 H. 920 P. 480  
W. 72¼" H. 36¼" D. 19"

**Court Yard**  
— Francesco Rota



L. 1600 H. 870 P. 320  
W. 63" H. 34½" D. 12½"

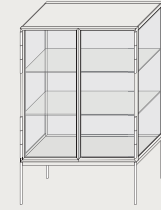


L. 1600 H. 870 P. 320  
W. 63" H. 34½" D. 12½"



L. 810 H. 455 P. 410  
W. 32" H. 18" D. 16¼"

**Galerist**  
— Christophe Pillet



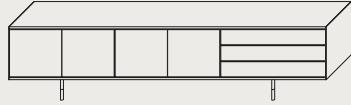
L. 1130 H. 1720 P. 540  
W. 44½" H. 67¾" D. 21¼"

**Glance**  
—Matteo Nunziati



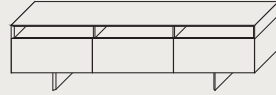
L. 1200 H. 1700 P. 450  
W. 47¼" H. 67" D. 17¾"

**Long Island**  
—Christophe Pillet



L. 3000 H. 700 P. 500  
W. 118" H. 27½" D. 19¾"

**Marble Arch**  
—Matteo Nunziati



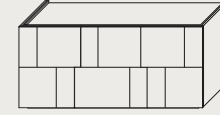
L. 2300 H. 625 P. 470  
W. 90½" H. 24½" D. 18½"

**Nine**  
—Alessandro Dubini



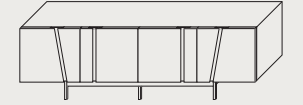
L. 500 H. 1294 P. 500  
W. 19¾" H. 51" D. 19¾"

**Ortelia**  
—Carlo Marelli e  
Massimo Molteni



L. 1740 H. 790 P. 520  
W. 68½" H. 31" D. 20½"

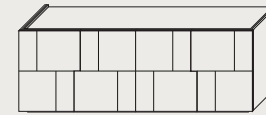
**Picture**  
—Cairoli&Donzelli



L. 2215 H. 700 P. 530  
W. 87¼" H. 27½" D. 20¾"



L. 2300 H. 720 P. 480  
W. 90½" H. 28¼" D. 19"



L. 2200 H. 790 P. 520  
W. 86½" H. 31" D. 20½"

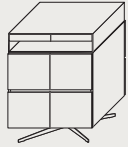


**Rainbow**  
—Roberto Lazzeroni



L. 2250 H. 700 P. 500  
W. 88½" H. 27½" D. 19¾"

**Steward**  
—Christophe Pillet



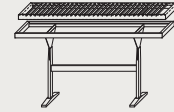
L. 800 H. 1060 P. 540  
W. 31½" H. 41¾" D. 21¾"

**Winston**  
—Christophe Pillet

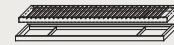


L. 800 H. 1300 P. 500  
W. 31½" H. 51¼" D. 19¾"

**Booken**  
—Raw Edges



L. 1300 H. 650 P. 320  
W. 51¼" H. 25½" D. 12½"



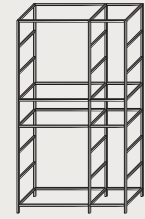
L. 1300 H. 40 P. 320  
W. 51¼" H. 1½" D. 12½"

**Koala**  
—Ludovica e  
Roberto Palomba

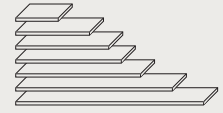


L. 132 H. 1450 P. 200  
W. 5¼" H. 57" D. 7¾"

**Plain**  
—Francesco Rota

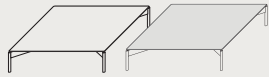


L. 1035 H. 1829 P. 346  
W. 40¾" H. 72" D. 13½"

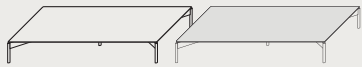


L. 457 - 793 - 1000 - 1135 - 1342 - 1684 - 2020  
H. 15 - 35 P. 314  
W. 18" - 31¼" - 39¼" - 44¾" - 52¾" - 66¼" - 79½"  
H. ½" - 1½" D. 12¼"

**Cruise**  
—Officinadesign Lema



L. 1200 H. 250 P. 1200  
W. 47½" H. 8" D. 47½"



L. 1400 H. 205 P. 700  
W. 55" H. 8" D. 27½"  
L. 1800 H. 205 P. 700  
W. 70¾" H. 8" D. 27½"

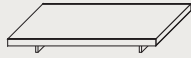


Ø 1200 H. 205  
Ø 47½" H. 8"

**Deck**  
—Christophe Pillet

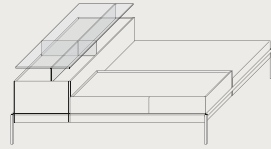


L. 1000 H. 190 P. 1000  
W. 39¼" H. 7½" D. 39¼"  
L. 1200 H. 190 P. 1200  
W. 47¼" H. 7½" D. 47¼"

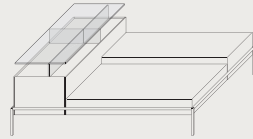


L. 1400 H. 190 P. 700  
W. 55" H. 7½" D. 27½"  
L. 1800 H. 190 P. 700  
W. 70¾" H. 7½" D. 27½"

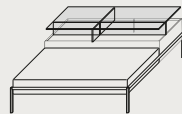
**Faroe**  
—Gordon Guillaumier



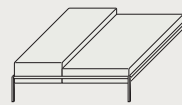
L. 1792 H. 630 P. 1292  
W. 70½" H. 24¾" D. 50¾"



L. 1792 H. 630 P. 1292  
W. 70½" H. 24¾" D. 50¾"

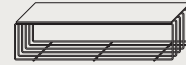


L. 1292 H. 520 P. 1292  
W. 50¾" H. 20½" D. 50¾"



L. 1292 H. 410 P. 1292  
W. 50¾" H. 16¼" D. 50¾"

**Fence**  
—Christophe Pillet



L. 1500 H. 370 P. 380  
W. 59" H. 14½" D. 15"

**Flowers**  
—Roberto Lazzeroni



L. 600 H. 550 P. 511  
W. 23½" H. 21¾" D. 20"



L. 600 H. 370 P. 511  
W. 23½" H. 14½" D. 20"

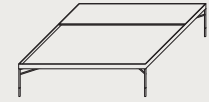


L. 1098 H. 370 P. 936  
W. 43¾" H. 14½" D. 36¾"



L. 1295 H. 370 P. 1104  
W. 51" H. 14½" D. 43½"

**Mansion**  
—Christophe Pillet



L. 1200 H. 305 P. 1200  
W. 47¼" H. 12" D. 47¼"

## Mr. Zheng

—Roberto Lazzeroni



Ø 520 H. 520  
Ø 20½" H. 20½"

## Note

—LucidiPevere



L. 520 H. 495 P. 430  
W. 20½" H. 19½" D. 17"

## Oydo

—Francesco Rota



L. 1600 H. 280 P. 860  
W. 63" H. 11" D. 33¾"

## Silo

—Studio Kairos



L. 500 H. 480 P. 380  
W. 19¾" H. 19" D. 15"

## Aberdeen

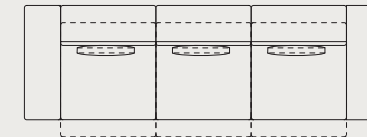
—Officinadesign Lema



L. 2780 H. 660 P. 1010  
W. 109½" H. 26¾" D. 39¾"

## Brick Lane

—Christophe Pillet



L. 3760 H. 560 - 770 P. 1200 - 1380  
W. 148" H. 22" - 30¾" D. 47¼" - 54¼"



Ø 900 H. 340  
Ø 35½" H. 13½"

Ø 1200 H. 340  
Ø 47¼" H. 13½"



Ø 900 H. 370  
Ø 35½" H. 14½"

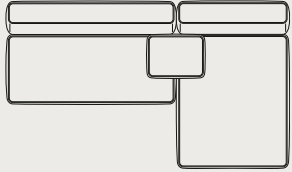


L. 1800 H. 340 P. 1000  
W. 70¾" H. 13½" D. 39¾"

**Nota**  
Per tutti i divani consultare il catalogo generale Soft e il relativo listino per verificare tutte le possibili composizioni.

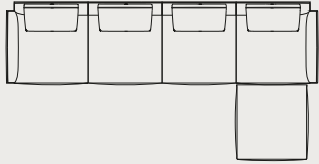
**Note**  
For all the sofas please refer to Soft general catalogue and price list to verify all possible configurations.

**Cloud**  
—Francesco Rota



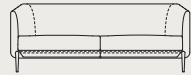
L. 2980 H. 630 P. 1630  
W. 117¼" H. 24¾" D. 64¼"

**Jermyn**  
—Gordon Guillaumier



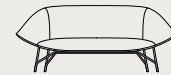
L. 3510 H. 920 P. 930 - 1780  
W. 138¼" H. 36¼" P. 36½" - 70"

**Kaiwa**  
—Matteo Nunziati



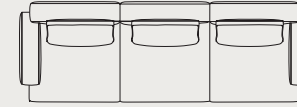
L. 1870 H. 700 P. 810  
W. 73½" H. 27½" D. 32"

**Lennox**  
—Gordon Guillaumier



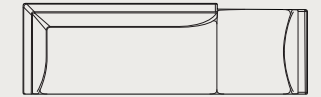
L. 1680 H. 690 P. 810  
W. 66¼" H. 27¼" D. 32"

**Mustique**  
—Gordon Guillaumier

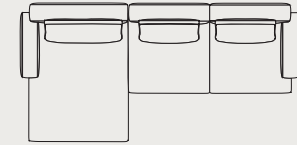


L. 3010 H. 865 P. 1040  
W. 118½" H. 34" D. 41"

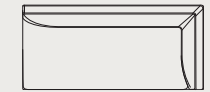
**Neil**  
—Francesco Rota



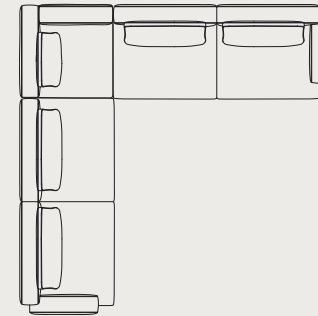
L. 3000 H. 800 P. 950  
W. 116" H. 31½" D. 37½"



L. 3230 - 3430 - 3630 H. 630 P. 1500  
W. 127¼" - 135" - 143" H. 24¾" D. 59"



L. 2050 H. 700 P. 950  
W. 80¾" H. 27½" D. 37½"



L. 3020 x 3480 H. 630 P. 1040 x 1040  
W. 119" x 137" H. 24¾" D. 41" x 41"

**Nota**  
Per tutti i divani consultare il catalogo generale Soft e il relativo listino per verificare tutte le possibili composizioni.

**Note**  
For all the sofas please refer to Soft general catalogue and price list to verify all possible configurations.

## Snap

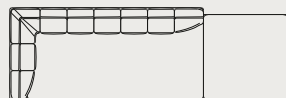
—Francesco Rota



L. 1900 - 2150 - 2400 H. 630 P. 980  
W. 74 $\frac{3}{4}$ " - 84 $\frac{3}{4}$ " - 94 $\frac{1}{2}$ " H. 24 $\frac{1}{2}$ " D. 38 $\frac{1}{2}$ "

## Warp

—Francesco Rota



L. 2900 H. 780 P. 680  
W. 114 $\frac{1}{4}$ " H. 30 $\frac{3}{4}$ " D. 26 $\frac{3}{4}$ "

## Yard (day bed)

—Francesco Rota



L. 2020 H. 335 P. 910  
W. 79 $\frac{1}{2}$ " H. 13 $\frac{1}{4}$ " D. 35 $\frac{3}{4}$ "

## Yard

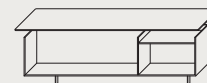
—Francesco Rota



L. 3140 H. 660 P. 1000  
W. 123 $\frac{1}{2}$ " H. 26 $\frac{3}{4}$ " D. 39 $\frac{1}{4}$ "

## Yard (retro divano)

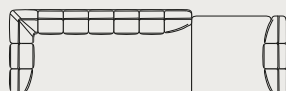
—Francesco Rota



L. 1710 H. 670 P. 410  
W. 67 $\frac{1}{2}$ " H. 26 $\frac{1}{2}$ " D. 16 $\frac{1}{4}$ "



L. 3380 - 3860 - 4110 - 4360 H. 630 P. 980  
W. 133 $\frac{1}{4}$ " - 152" - 162 - 171 $\frac{3}{4}$ " H. 24 $\frac{1}{2}$ " D. 38 $\frac{1}{2}$ "



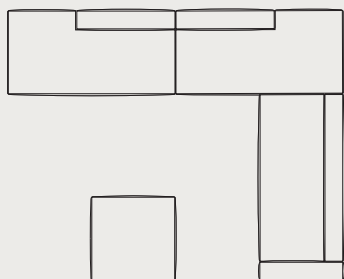
L. 3050 H. 780 P. 680  
W. 120" H. 30 $\frac{3}{4}$ " D. 26 $\frac{3}{4}$ "



L. 2020 H. 335 P. 910  
W. 79 $\frac{1}{2}$ " H. 13 $\frac{1}{4}$ " D. 35 $\frac{3}{4}$ "

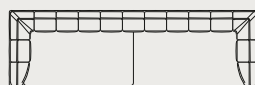


L. 2920 H. 660 P. 1000  
W. 115" H. 26 $\frac{3}{4}$ " D. 39 $\frac{1}{4}$ "

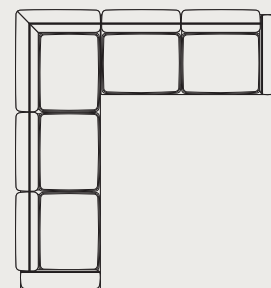


L. 3920 x 3160 H. 630 P. 980  
W. 154 $\frac{1}{4}$ " x 124" H. 24 $\frac{3}{4}$ " D. 38 $\frac{1}{2}$ "

Pouf  
L. 980 H. 360 P. 980  
W. 38 $\frac{1}{2}$ " H. 14 $\frac{1}{4}$ " D. 38 $\frac{1}{2}$ "



L. 3250 H. 780 P. 680  
W. 128" H. 30 $\frac{3}{4}$ " D. 26 $\frac{3}{4}$ "



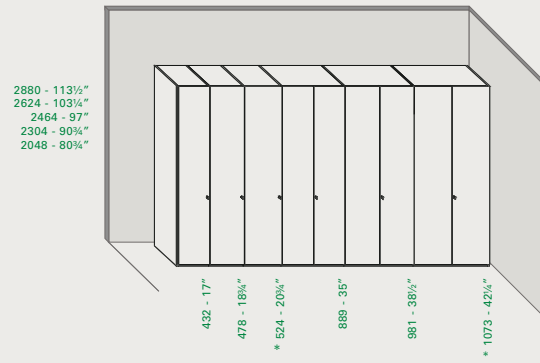
L. 3020 x 3240 H. 660 P. 1000  
W. 119" x 127 $\frac{1}{2}$ " H. 26 $\frac{3}{4}$ " D. 39 $\frac{1}{4}$ "

Nota  
Per tutti i divani consultare il catalogo generale Soft e il relativo listino per verificare tutte le possibili composizioni.

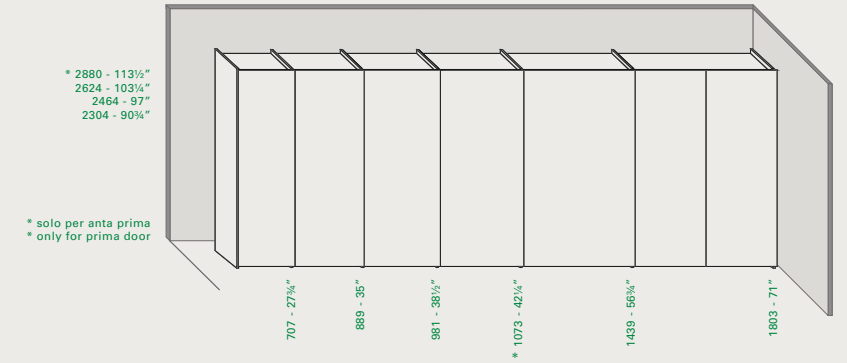
Note  
For all the sofas please refer to Soft general catalogue and price list to verify all possible configurations.

## Armadio al centimetro — Wardrobe

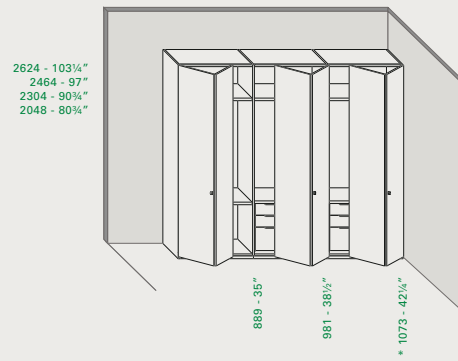
Ante battenti  
Hinged doors



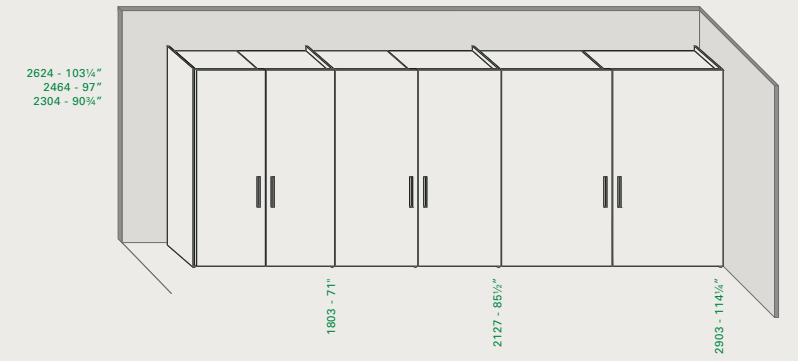
Ante scorrevoli  
Sliding doors



Ante pieghevoli  
Bi-folding doors



Ante complanari  
Coplanar doors

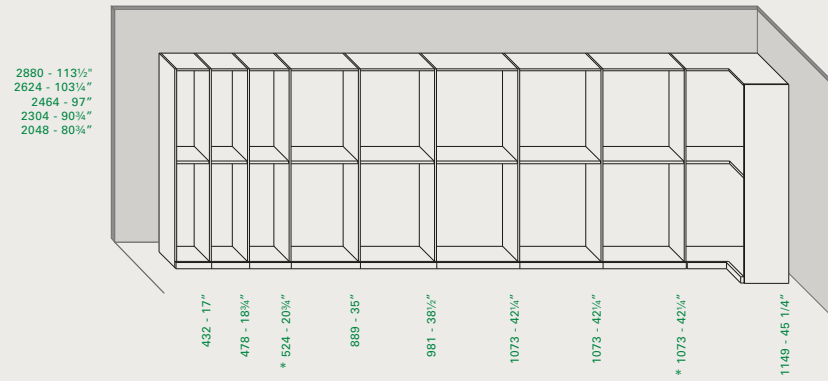


\*  
Le misure di questi vani verranno sostituite a breve con le seguenti misure: 570 e 1165.

\*  
The measurements of these compartments will be replaced soon with the following measures: 22½" and 45¾".

## Armadio al centimetro — Wardrobe

Open  
Without doors



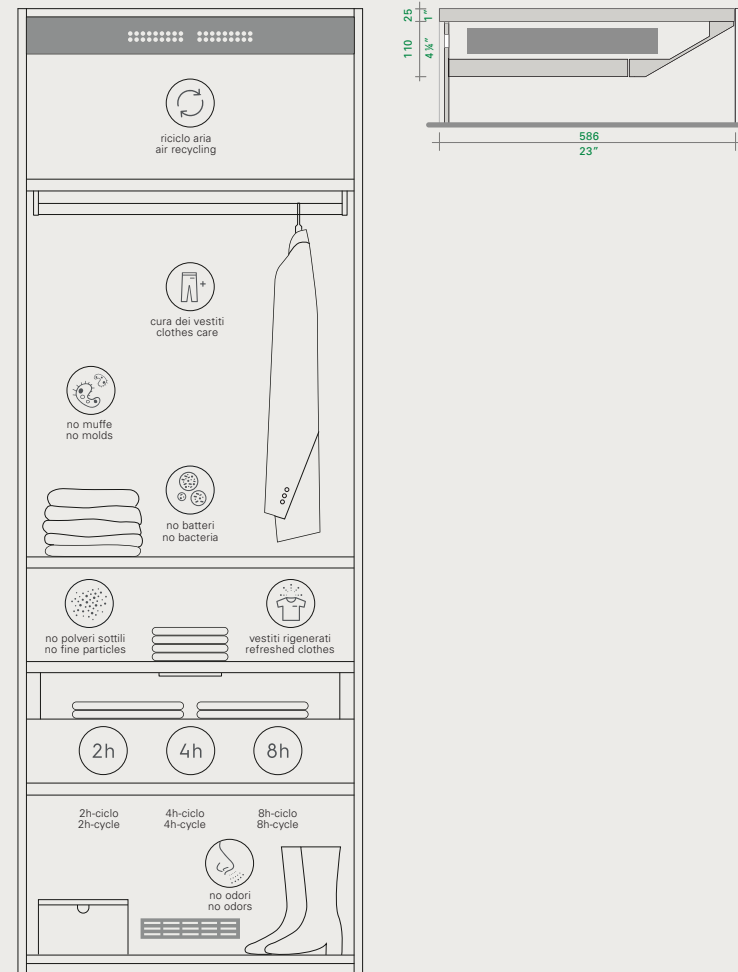
\*  
Le misure di questi vani verranno sostituite a breve con le seguenti misure: 570 e 1165.

\*  
The measurements of these compartments will be replaced soon with the following measures: 22 1/2" and 45 3/4".

Nota  
Open è una denominazione presente solo nel catalogo fotografico. Per la consultazione a listino considerare armadio al centimetro senza ante.

Note  
the name Open is only present in the photographic catalogue. When consulting the price list, consider the armadio al centimetro without doors.

## Lema Air Cleaning System

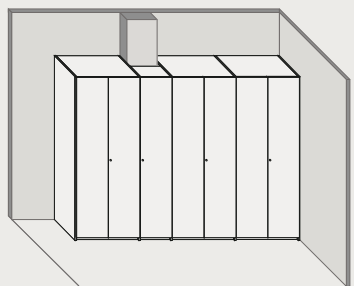


Nota  
Disponibile per tutti i vani di armadio battente, pieghevole e complanare.

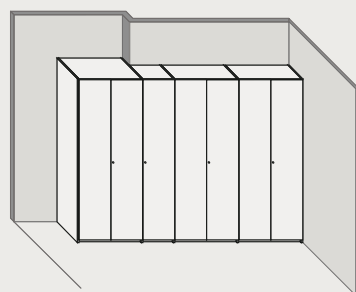
Note  
Available for every hinged, bi-folding and coplanar wardrobes columns.

## Composizioni per ante battenti

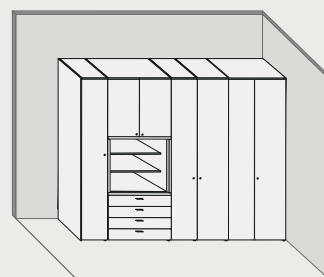
— *Compositions for hinged doors*



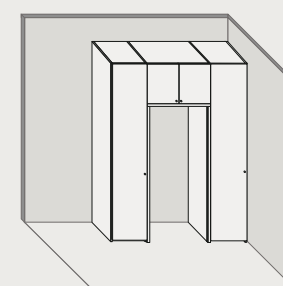
Cambio di profondità per presenza di pilastri  
Change of depth due to a wall pillar



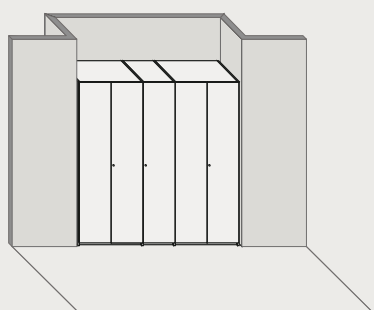
Cambio di profondità  
Depth change



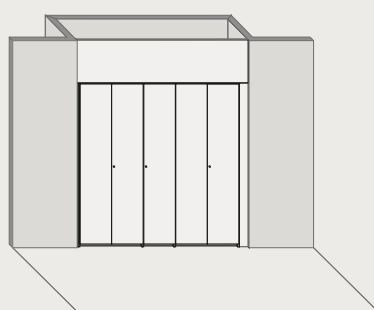
Soluzione con vano e cassetiera a vista  
Solution with open cabinet and chest of drawers



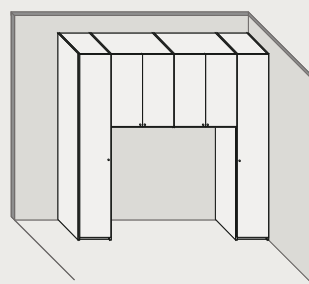
Soluzione passaggio porta  
Passage solution



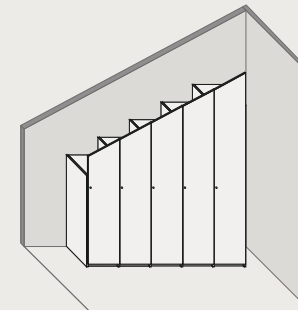
Armadio in nicchia  
Wardrobe in niche



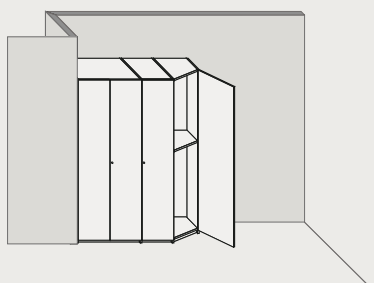
Armadio in nicchia con chiusure laterali e orizzontali  
Wardrobe in niche with horizontal and lateral fillers



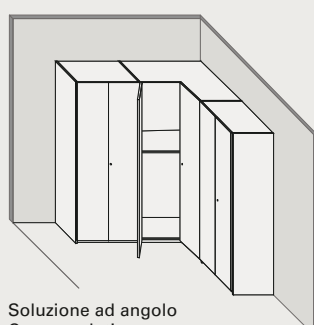
Soluzione a ponte  
Bridge solution



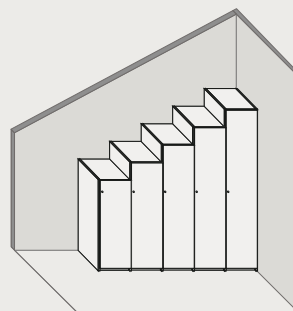
Soluzione per mansarde  
Solution for attic



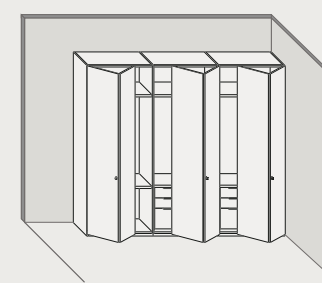
Armadio con elemento terminale  
Wardrobe with end column



Soluzione ad angolo  
Corner solution



Soluzione a scaletta per mansarde  
Stair solution for attic

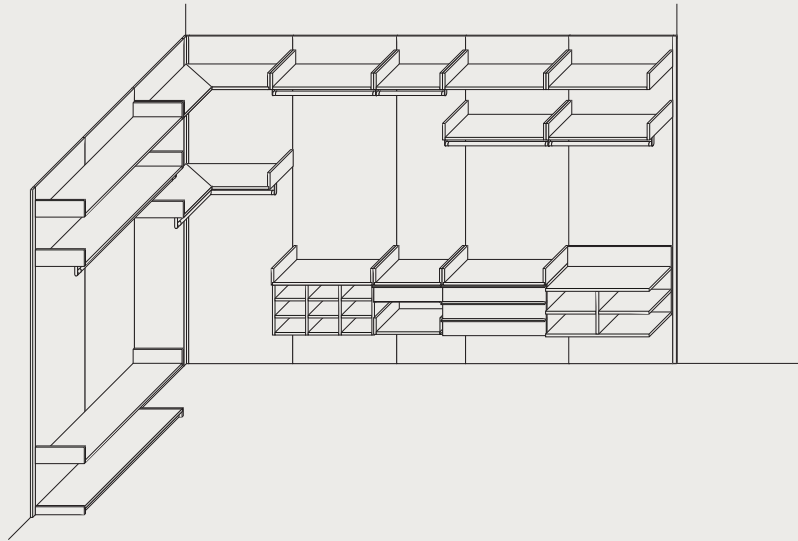


Armadio con ante pieghevoli  
Wardrobe with bi-folding doors

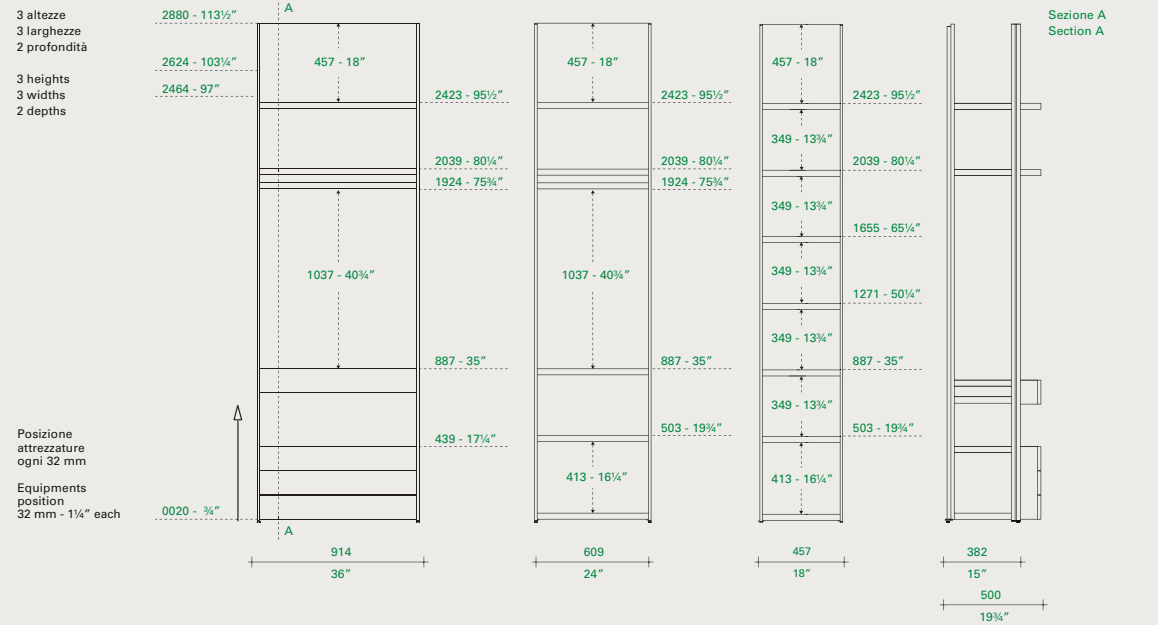
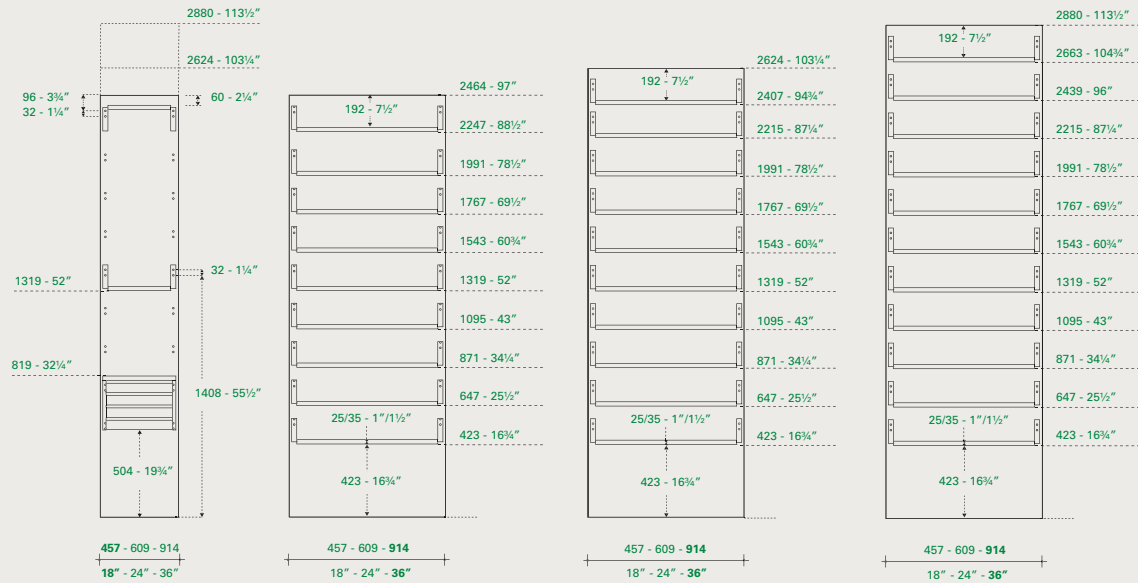
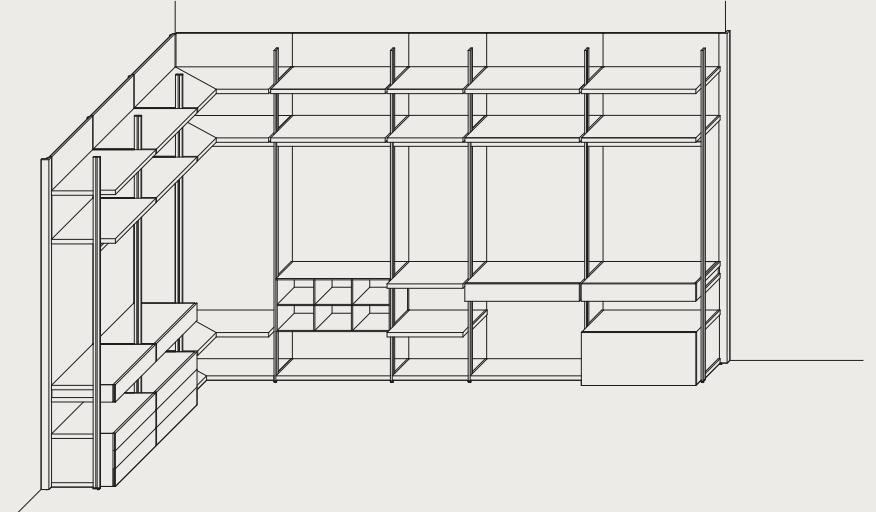


**Cabine Armadio**  
— *Walk-in wardrobes*

Novenove  
modularità, modularity

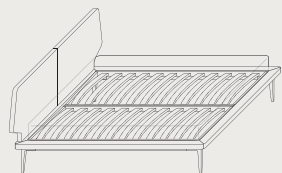


Hangar  
modularità, modularity



## Dream view

—Roberto Lazzeroni



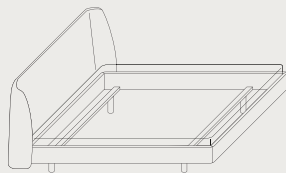
L. 2130 H. 998 P. 1950 - 1730  
W. 83¼" H. 39¼" D. 76¼" - 68"

L. 2130 H. 998 P. 2050 - 1830  
W. 83¼" H. 39¼" D. 80¼" - 72"

L. 2130 H. 998 P. 2150 - 1930  
W. 83¼" H. 39¼" D. 84¼" - 76"

## Edel

—Officinadesign Lema



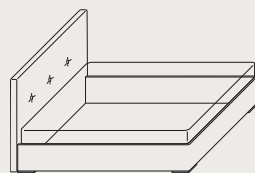
L. 2250 H. 1030 P. 1940 - 1710  
W. 88½" H. 40½" D. 76½" - 67¼"

L. 2250 H. 1030 P. 2040 - 1810  
W. 88½" H. 41¼" D. 80¼" - 71¼"

L. 2250 H. 1030 P. 2140 - 1910  
W. 88½" H. 40½" D. 84¼" - 75¼"

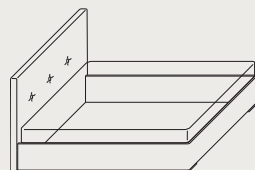
## Madama

—Officinadesign Lema



L. 1820 - 1920 - 2020 H. 1150 P. 2220  
W. 71¾" - 75¼" - 79½" H. 45¼" D. 87½"

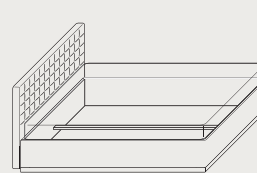
Versione con contenitore  
Storage container version



L. 1920 H. 1150 P. 2220  
W. 75¼" H. 45¼" P. 87½"

## Picolit

—Officinadesign Lema



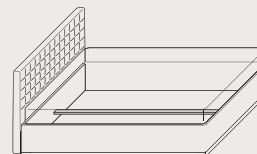
L. 2160 H. 905 P. 1500  
W. 85" H. 35¾" D. 59"

L. 2160 H. 905 P. 1700  
W. 85" H. 35¾" D. 67"

L. 2160 H. 905 P. 1800  
W. 85" H. 35¾" D. 70¾"

L. 2160 H. 905 P. 1900  
W. 85" H. 35¾" D. 74¾"

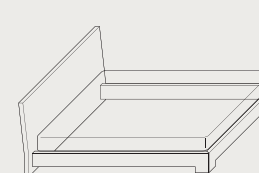
Versione con contenitore  
Storage container version



L. 2160 H. 905 P. 1800  
W. 85" H. 35¾" D. 70¾"

## Quaranta

—Officinadesign Lema



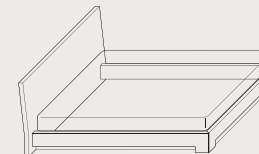
L. 2080 H. 860 P. 1800 - 1610  
W. 82" H. 33¾" D. 70¾" - 63½"

L. 2180 H. 860 P. 1900 - 1710  
W. 85¼" H. 33¾" D. 74¾" - 67¼"

L. 2180 H. 860 P. 2000 - 1810  
W. 85¼" H. 33¾" D. 78¾" - 71¼"

L. 2180 H. 860 P. 2100 - 1910  
W. 85¼" H. 33¾" D. 82¾" - 75¼"

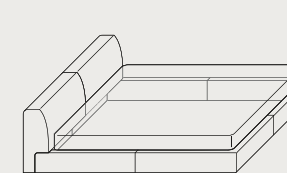
Versione con contenitore  
Storage container version



L. 2180 H. 860 P. 2000 - 1810  
W. 85¼" H. 33¾" D. 78¾" - 71¼"

## Softland

—Ludovica e  
Roberto Palomba



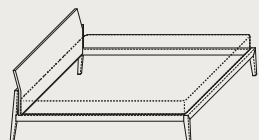
L. 2340 H. 730 P. 1750  
W. 92¼" H. 28¾" D. 69"

L. 2340 H. 730 P. 1850  
W. 92¼" H. 28¾" D. 72¾"

L. 2340 H. 730 P. 1950  
W. 92¼" H. 28¾" D. 76¾"

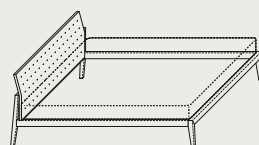
**Theo**  
—Studio Kairos

Testata legno  
Wooden headboard

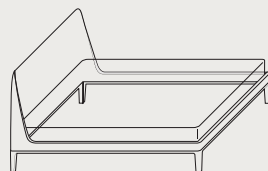


L. 1565 - 1750 H. 890 P. 2165  
W. 61½" - 69" H. 35" D. 85¼"  
L. 1665 - 1850 H. 890 P. 2165  
W. 65½" - 72¾" H. 35" D. 85¼"

Testata rivestita in tessuto  
Headboard with fabric covering



**Victoriano**  
—Roberto Lazzeroni

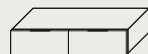


L. 1740 H. 1130 P. 2240  
W. 68½" H. 44½" D. 88¼"  
L. 1840 H. 1130 P. 2240  
W. 72½" H. 44½" D. 88¼"  
L. 1940 H. 1130 P. 2240  
W. 76½" H. 44½" D. 88¼"

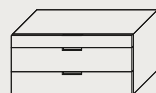
**Flin**  
—Officinadesign Lema



L. 600 H. 280 P. 476  
W. 23½" H. 11" D. 18¾"



L. 1202 H. 280 P. 476  
W. 47¼" H. 11" D. 18¾"



L. 1250 H. 655 P. 571  
W. 49¼" H. 25¾" D. 22"



L. 1600 H. 655 P. 571  
W. 63" H. 25¾" D. 22½"

**Luna**  
—Carlo Marelli e  
Massimo Molteni



L. 600 H. 430 P. 450  
W. 23½" H. 17" D. 17¾"



L. 650 H. 1250 P. 510  
W. 25½" H. 49¼" D. 20"



L. 1300 H. 700 P. 550  
W. 51¼" H. 27½" D. 21¼"

**Notch**  
—Joban Lindsten



Ø 550 H. 430  
Ø 21¾" H. 17"

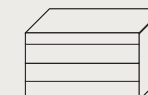


Ø 850 H. 400  
Ø 33½" H. 15¾"

**Quarantacinque**  
—Officinadesign Lema



L. 600 H. 350 P. 480  
W. 23½" H. 13¾" D. 19"



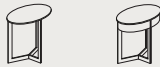
L. 1200 H. 720 P. 540  
W. 47¼" H. 28¼" D. 21¼"

**Shen**  
—Cairolì&Donzelli



L. 600 H. 350 P. 460  
W. 23½" H. 13¾" D. 18"

**Sign**  
—Studio Kairos



Ø 450 H. 300 - 480  
Ø 17¾" H. 11¼" - 19"

**Tip**  
—Daniel Debiassi e  
Federico Sandri



L. 427 H. 446 P. 407  
W. 16¾" H. 17½" D. 16"

**Tod**  
—Ferruccio Laviani

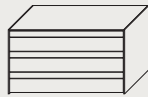


Ø 520 H. 550  
Ø 20½" H. 21¾"

**Vic**  
—Roberto Lazzeroni



L. 510 H. 470 P. 420  
W. 20" H. 18½" D. 16½"



L. 1270 H. 700 P. 560  
W. 50" H. 27½" D. 22"



Ø 600 H. 300 - 480  
Ø 23½" H. 11¼" - 19"



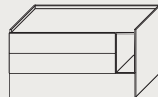
L. 600 H. 446 P. 407  
W. 23½" H. 17½" D. 16"



Ø 900 H. 390  
Ø 35½" H. 15¼"



L. 510 H. 525 P. 420  
W. 20" H. 20¾" D. 16½"



L. 1300 H. 706 P. 547  
W. 51¼" H. 27¾" D. 21½"

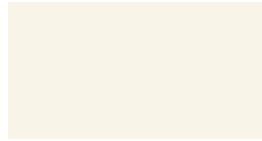


L. 600 H. 1286 P. 497  
W. 23½" H. 50¾" D. 19½"

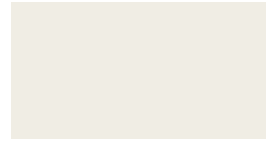
*Lemacolor*trend



Carta 750



Latte 405



Cigno 700 / Bianco 400



Calcare 801



Ghiaia 913



Ombra 803



Cacao 461



Caffé 903



Fumo 906



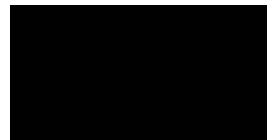
Sabbia 910



Pomice 905



Grafite 918



Lavagna 713



Platino 873



Antimonio 870



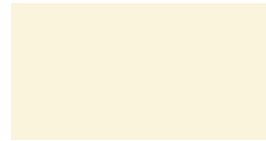
Pepe 804



Salvia 835



Basalto 920



Panna 754



Canapa 707



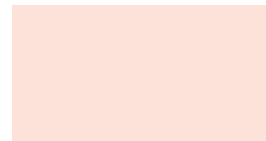
Cedro 811



Senape 462



Mango 845



Petalo 472



Paprika 826



Amarena 828



Bruciato 477



Vinaccia 829



Terracotta 478



Fango 471



Terra 805



Limo 836



Kaki 839



Assenzio 479



Timo 480



Avio 476



Ottano 847

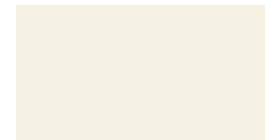


Petrolio 846

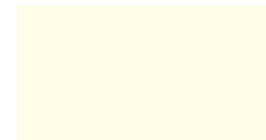


Oltremare 469

*Lemacolor*lucido



Paper 227



Bianco 200



Nocciola 213



Grigio 205



Scoglio 212



Talpa 233



Nero 215



Marna 237



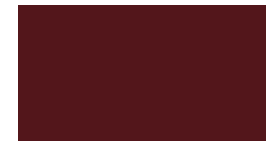
Beige 211



Zolfo 234



Ciliegia 216



Granata 238



Bordeaux 220



Ortica 235



Aneto 232



Ruta 231



Alga 222



Impero 236



Navy 230

*Essenze  
Woods*



Rovere Carbone



Rovere Naturale



Rovere Termotrattato



Noce Canaletto



Frassino tinto nero a poro aperto



Rovere Grigio



Frassino/Rovere laccato Amarena a poro aperto



Frassino laccato bianco a poro aperto

*Melaminici  
Melamine*



Canvas



Lino



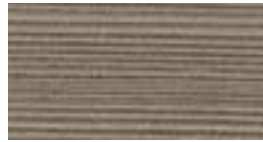
Visone



Larice moka



Larice sbiancato



Larice grigio

*Cementi  
Cements*



Cemento medio



Cemento scuro



Pietra lavica

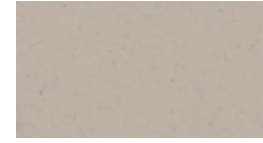
*Argille  
Clay*



Ardesia



Creta



Polvere



Sabbia



Pece

*Marmi  
Marbles*



Bianco carrara



Pietra grey opaco



Portoro opaco

*Marmi ricostruiti  
Reconstructed marbles*



Verde malachite

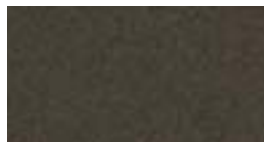


Blu lapislazzuli



Nero belgianblue

**Metalli**  
**Metals**



Metallo verniciato bronzo epox



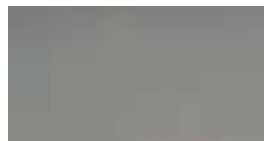
Metallo verniciato sand epox



Metallo anodizzato warm



Metallo verniciato bronzo

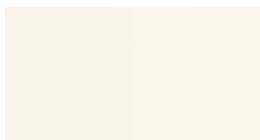


Metallo anodizzato cromato

**Vetri**  
**Glasses**



Bianco



Yogurt



Perla



Avorio



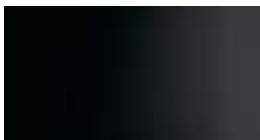
Titanio



Tortora



Grigio



Nero



Aragosta



Rosso



Bronzo riflettente



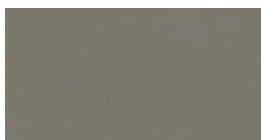
Riflettente RL



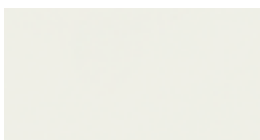
Ematite (opaco/matt)



Giada (opaco/matt)



Iridio (opaco/matt)



Talco (opaco/matt)



Vetro serigrafato tessuto

**Rivestimenti decorativi tessili**  
**Decorative fabric covering**



Leda 200



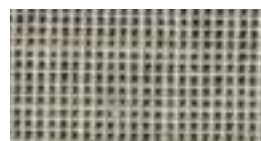
Leda 201



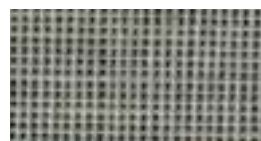
Leda 202



Leda 203



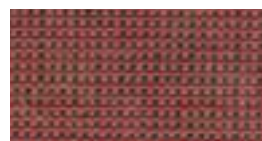
Antea 300



Antea 301

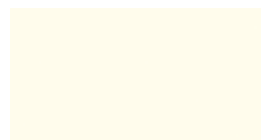


Antea 302

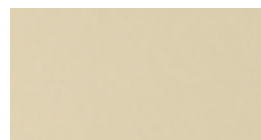


Antea 303

**Cuoio light**  
**Hide leather**



Bianco



Avorio



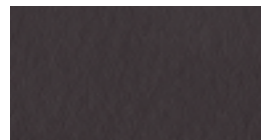
Tortora



Naturale invecchiato



Grigio



Caffé



Nero

## Lema Air Cleaning System

IT — Gli ambienti esterni dove spendiamo gran parte del nostro frenetico quotidiano, come ad esempio uffici, mezzi pubblici, centri commerciali, ristoranti, hotel, palestre, sono spesso contaminati a causa di un ricambio di aria non adeguato: batteri, allergeni, muffe, monossido di carbonio, polveri sottili vanno così ad impregnare i nostri indumenti generando sovente cattivi odori. Ed è in un contesto di vita così intenso come quello contemporaneo che l'attenzione di Lema verso il cliente si spinge oltre, a soddisfare il suo benessere, rivoluzionando il concetto di armadio, e conferendogli per la prima volta un ruolo attivo nella sanificazione di abiti, scarpe e indumenti. Prima a lanciare negli anni ottanta il sistema a spalla portante e successivamente un programma sartoriale come Armadio al Centimetro, Lema si distingue oggi per un nuovo primato: l'innovativo dispositivo brevettato Lema Air Cleaning System. Frutto di oltre un anno di ricerca e presentato in esclusiva mondiale, Lema Air Cleaning System, posto alla sommità dell'armadio

senza intaccarne l'estetica, grazie all'interazione di una nanotecnologia e con una speciale lampada UV, genera una reazione fotochimica che permette di distruggere con un principio attivo naturale le sostanze inquinanti, batteri e muffe, depurando l'interno dell'armadio e abbattendo in misura superiore al 90% i cattivi odori presenti su abiti, scarpe e indumenti che vi sono riposti. Lema Air Cleaning System adotta la tecnologia brevettata photocatalytic Oxidation, meglio conosciuta come ossidazione fotocatalitica. Tecnica sviluppata per la sanificazione degli ambienti aerospaziali, dove una delle prerogative principali è proprio la qualità e la salubrità dell'aria, ampiamente utilizzata anche in ambiente ospedaliero, medicale e nel settore dell'alimentazione.

EN — We spend a great deal of our busy daily lives in environments outside the home, in places such as offices, public transport, shopping centers, restaurants, hotels and gyms, where the quality of air is poor due to inadequate recycling: bacteria, allergens, molds, carbon monoxide, particulate matter that permeate our clothing generating bad odors. Mindful of this intense contemporary lifestyle, Lema directs ever-greater attention to its clients, focusing on improving well-being by revolutionizing the concept of the wardrobe and for the first time, making it play an active role in sanitizing clothing and footwear. The first to launch a free-standing wall system and then a tailored configuration like Armadio al Centimetro, Lema today claims another first: the innovative and patented Lema Air Cleaning System. The result of more than twelve months of research and a world exclusive, the Lema Air Cleaning System, positioned discreetly at the top of the wardrobe, uses nanotechnology and a special UV lamp to generate a photochemical reaction that naturally destroys pollutants,

bacteria and mold, purifying the inside of the wardrobe and eliminating more than 90% of bad odours emanating from the stored clothing and footwear. The Lema Air Cleaning System uses patented Photocatalytic Oxidation technology, a technique used to purify aerospace environments, where one of the main issues is precisely the quality and cleanliness of the air, and is also widely used in hospitals, medical and food environments.



## Technical information

### Benefici

- Abbattimento della carica batterica.
- Riduzione degli odori oltre il 90%.
- Riduzione delle micro-particelle nocive presenti nell'aria.

### Applicazione

Air Cleaning System è disponibile per i vani da 432 - 478 - 570 - 889 - 981 - 1165 mm, per ante a battente, pieghevole e complanare. Il diffusore è disponibile in due finiture: verniciato bronzo e verniciato sand. Il ripiano collegato al diffusore è disponibile con o senza lampada "stripe".

### Tecnologia, consumi e manutenzione

- Possibilità di scegliere tra diversi cicli con durata da 2 a 8 ore.
- Sistema a basso voltaggio e amperaggio indipendente e comandato da un interruttore multifunzione sul fianco dell'armadio.
- Ventilazione ERP2018 ad elevata efficienza energetica.
- Manutenzione semplificata: sostituzione della lampada UV ogni 24 mesi.
- Il dispositivo, durante il funzionamento è estremamente silenzioso. Inserito nel coperchio superiore dell'armadio e protetto dalle ante di facciata, la sua attività è poco percettibile dall'utente.

**Note:** Lema Air Cleaning System è un prodotto dotato di tecnologia AIR CONTROL.

### Benefits

- Destruction of bacteria.
- Reduction odors by over 90%.
- Reduction of airborne particulate matter.

### Application

The Lema Air Cleaning System is available for the 17" - 18¾" - 22½" - 35" - 38½" - 42¼" units, or hinged, bi-folding and coplanar doors. The diffuser is available in two finishes: bronze-painted and sand-painted. The shelf connected to the diffuser is available with or without the "stripe" light.

### Technology, consumption and maintenance

- It is possible to choose between different cycles lasting from 2 to 8 hours.
- Low voltage and amperage system independent and controlled by a multifunctional switch on the side of the wardrobe.
- Highly efficient ERP2018 ventilation.
- Simple maintenance: UV lamp should be replaced every 2 years.
- The device is extremely quiet when in use. Positioned in the top cover of the wardrobe and protected by the front doors, it lies almost unnoticed.

**Note:** Lema Air Cleaning System is a product provided with AIR CONTROL technology.

**Art direction, design**

—*Graph.X*

**Foto**

—*Santi Caleca*

**Styling**

—*Studio Salaris*

—*Patrizia Cantarella*

**Retouching, Pre press**

—*A. De Pedrini*

**Stampa**

—*O.G.M. SpA 2019*

IT



EN



**LEMA s.p.a.**

22040 Alzate Brianza  
Como – Italy  
Strada Statale  
Briantea n° 2  
t +39 031 630 990  
f +39 031 632 492  
[lemamobili.com](http://lemamobili.com)