

Details

COLLECTION BOOK
— *number 5*

Abacus





HACKING

MP calls in cops after threat to ruin family

EXCLUSIVE
BY JASON BEATTIE *Mirror Post*

LIB DEM minister No reveals how he w blackmail plot af his son snorting He was for son's flatm to ruin h The me

Sommario — *Contents*

| | |
|--|----------|
| T030 <i>Modular system</i> | 04 –13 |
| Selecta <i>Modular system</i> | 14 –21 |
| Collezioni giorno <i>Day collections</i> | 22 –81 |
| Divani <i>Sofas</i> | 82 –103 |
| Armadio al centimetro <i>Wardrobe</i> | 104 –135 |
| Cabine armadio <i>Walk-in wardrobes</i> | 136 –143 |
| Letti, complementi notte <i>Beds, night complements</i> | 144 –161 |
| Disegni tecnici <i>Technical drawings</i> | 162 –201 |
| Finiture <i>Finishings</i> | 202 –206 |

Introduzione — *Introduction*

IT — Casa come luogo di arrivo e partenza. Sistema intelligente e vitale, organizzato ma libero, capace di accogliere il presente e il passato, di raccogliere suggestioni e differenze. Lema disegna e realizza le strutture essenziali dello spazio. Oggetti pensati e progettati per accompagnare percorsi privati e raccontare storie personali.

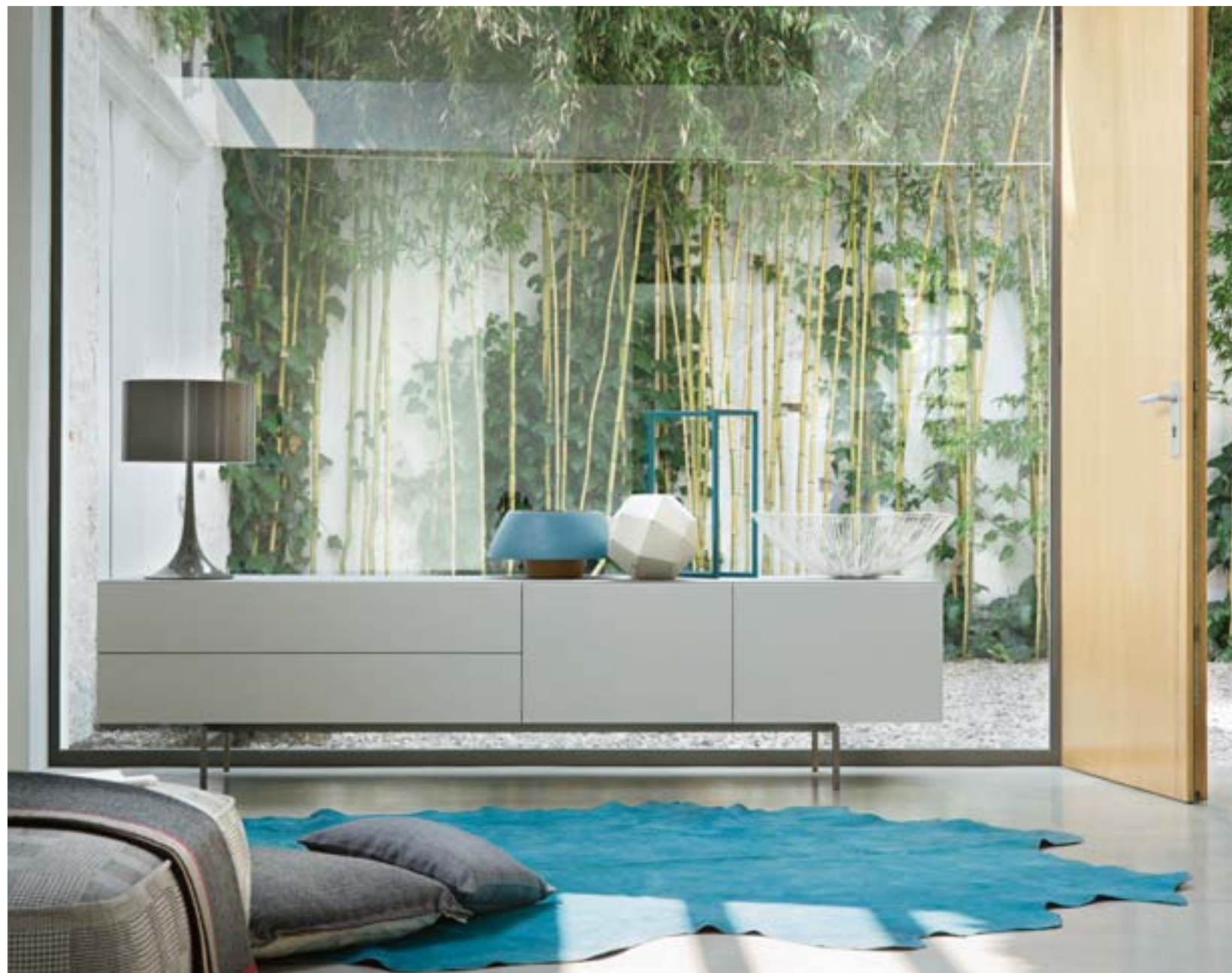
EN — Home, for arrival and departure. An intelligent and lively system, organized but free, where the present and past coexist, where suggestions and differences are gathered. Lema draws and creates essential structures of space. Objects have been imagined and designed to be part of personal experiences and to tell personal stories.

F — La maison, comme lieu de départ et de retour. Lieu d'intelligence et de vie, d'ordre et de liberté, capable d'accueillir le présent et le passé, de recueillir suggestions et différences. Lema dessine et réalise les structures essentielles de l'espace. Les objets sont là pour témoigner des aventures personnelles et raconter les histoires intimes.

D — Das Zuhause als Ort der Ankunft und der Abreise. Ein intelligentes und lebendiges System, geordnet aber losgelöst mit der Fähigkeit, die Gegenwart und die Vergangenheit aufzunehmen, sammelt Eindrücke und Unterschiede. Lema entwirft und verwirklicht grundlegende Strukturen des Wohnraumes. Wohlüberlegte und entworfene Objekte, die den Lebensweg begleiten und persönliche Geschichten erzählen.

ES — Casa como lugar de llegada y salida. Sistema inteligente y vivo, organizado pero libre, capaz de acoger el presente y el pasado, recoger sugerencias y diferencias. Lema diseña y realiza las estructuras esenciales del espacio. Objetos pensados y proyectados para acompañar recorridos privados y contar historias personales.

T030
—Modular system











Selecta
—Modular system









Collezioni giorno
—Day collections



















































70 - 71

Lady Jane Court Yard













Divani
— Sofas





84 – 85

Kaiwa Open



















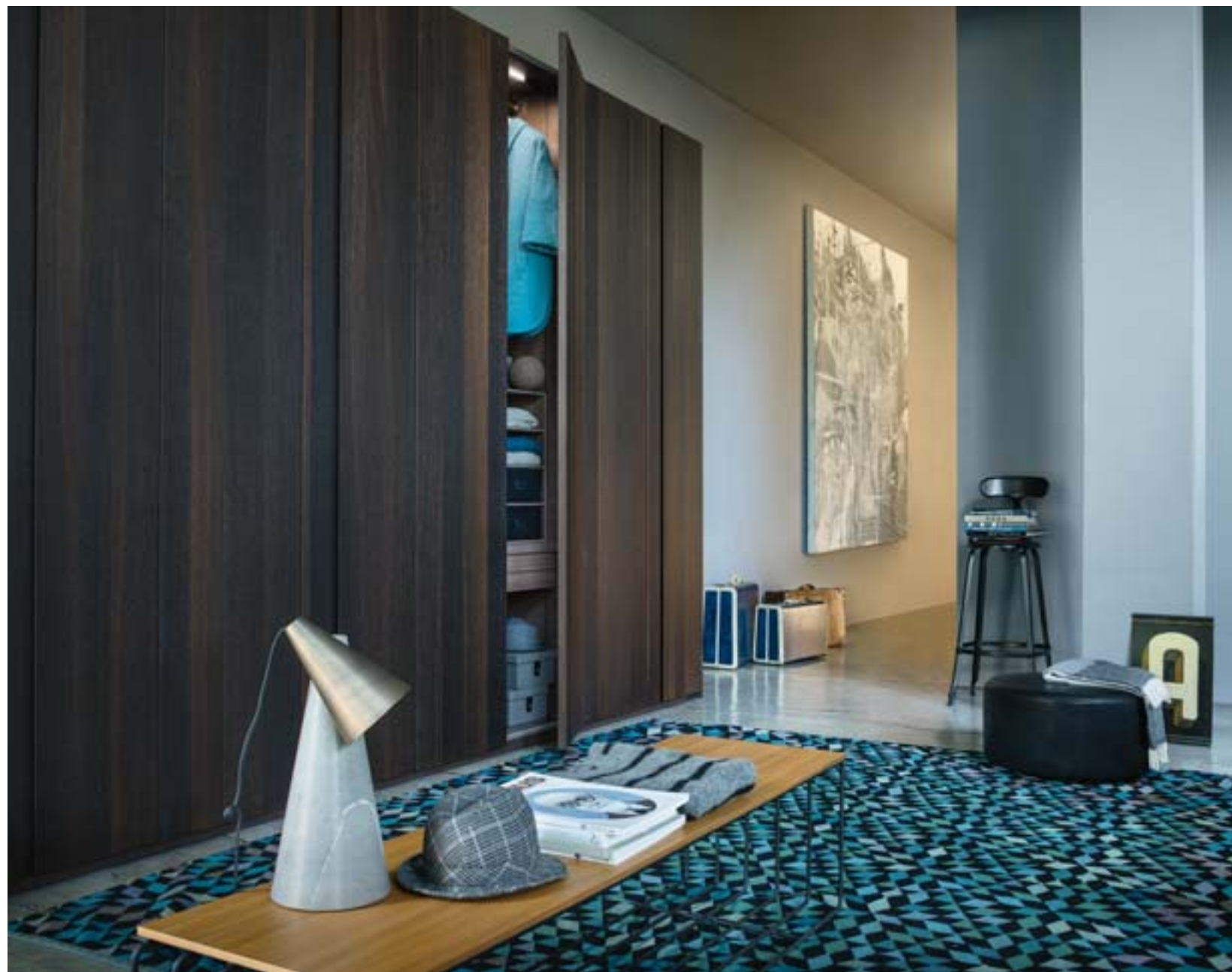
100 – 101

Snap





Armadio al centimetro
— *Wardrobe*

































Cabine armadio
— *Walk-in wardrobes*









Letti, complementi notte
—*Beds, night complements*



















160 – 161

Tip Dandy



Disegni tecnici

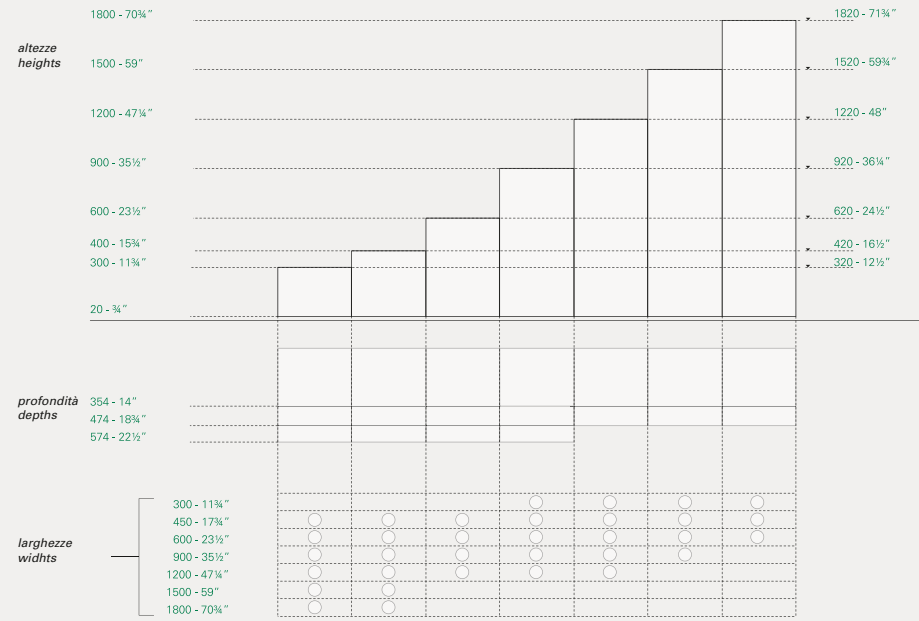
— *Technical Drawings*

| | |
|--|----------|
| T030 <i>Modular system</i> | 164 –167 |
| Selecta <i>Modular system</i> | 168 –169 |
| Collezioni giorno <i>Day collections</i> | 170 –185 |
| Divani <i>Sofas</i> | 185 –189 |
| Armadio al centimetro <i>Wardrobe</i> | 190 –193 |
| Cabine armadio <i>Walk-in wardrobes</i> | 194 –195 |
| Letti, complementi notte <i>Beds, night complements</i> | 196 –201 |
| Finiture <i>Finishings</i> | 202 –206 |

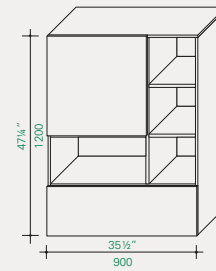
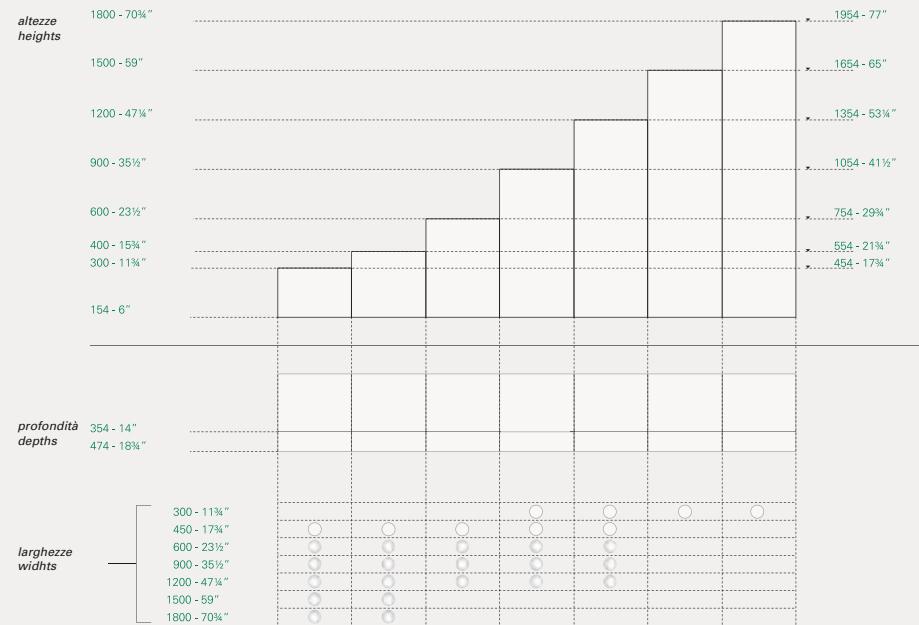
T030

—Modular system

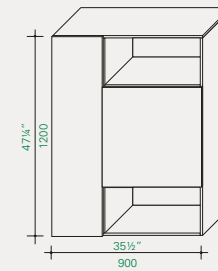
Contenitori a terra Basic units



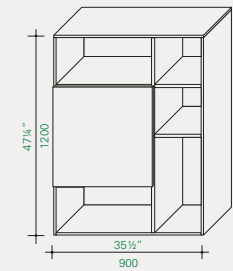
Contenitori pensili Pensili con zoccolo Hanging units Hanging with baseboard



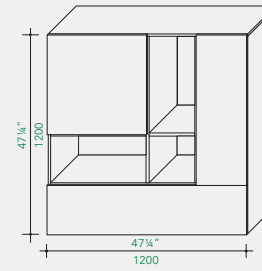
Box B



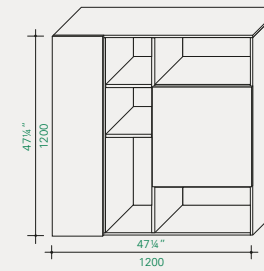
Box C



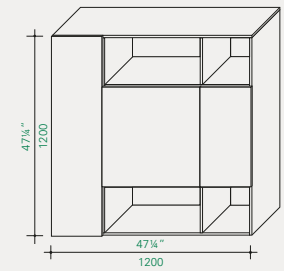
Box D



Box E



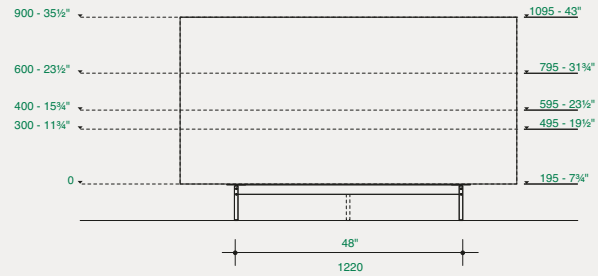
Box F



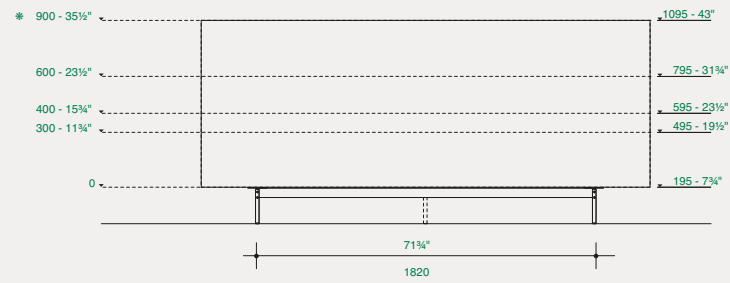
Box G

T030
—Modular system

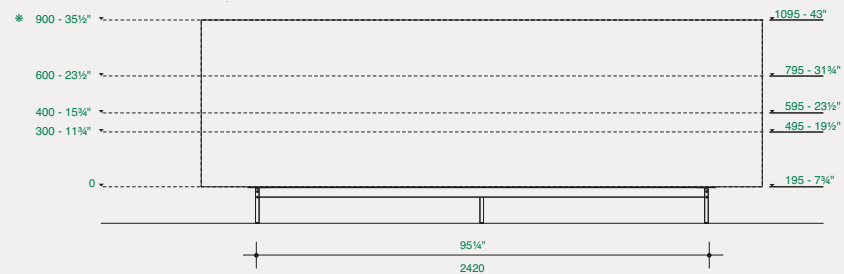
Composizione
Composition
L. 1800 - 71½"



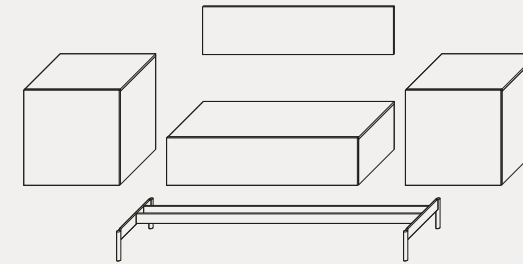
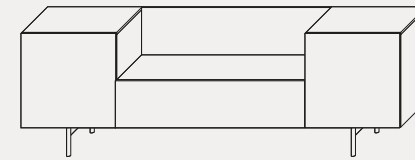
Composizione
Composition
L. 2500 - 95"



Composizione
Composition
L. 3000 - 118"

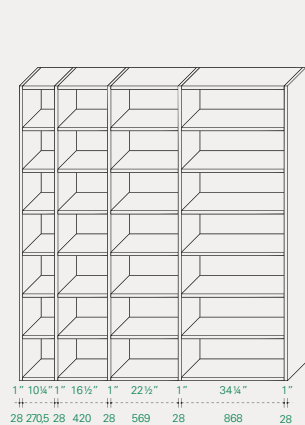


Esempi di composizioni
Composition examples

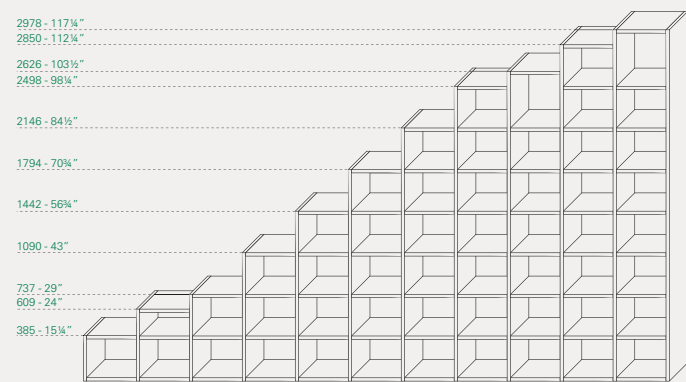


Selecta
—Modular system

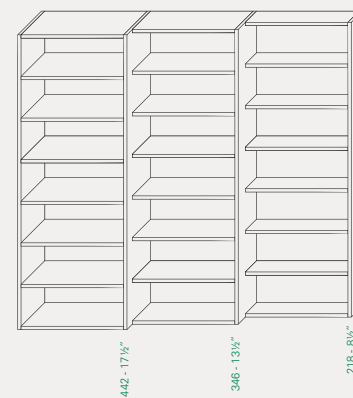
larghezze
widths



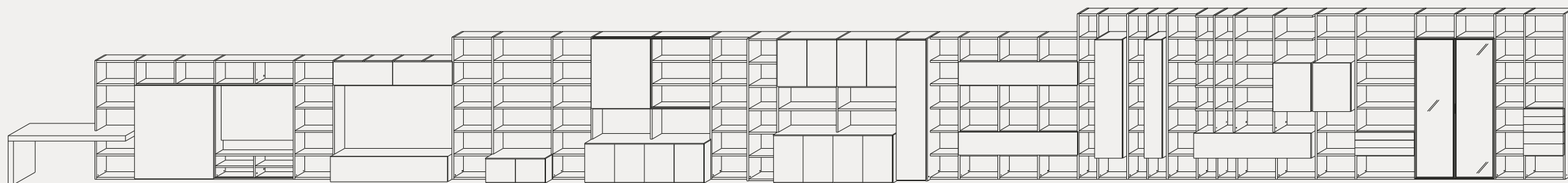
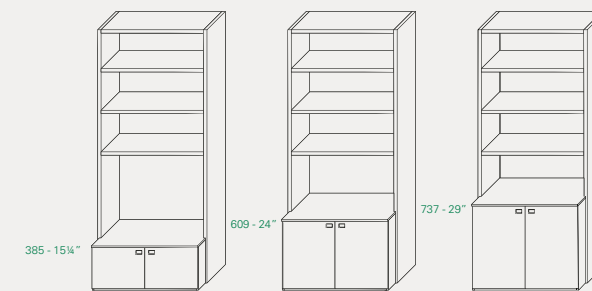
altezze
heights



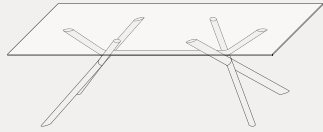
profondità
depths



altezze elementi sporgenti
heights jutting out elements

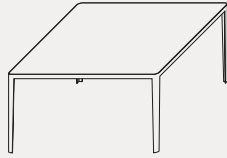


Bamboo
—Giopato & Coombes



L. 2490 H. 740 P. 1000
W. 98" H. 29¼" D. 39¼"

Filo
—David López Quincoces



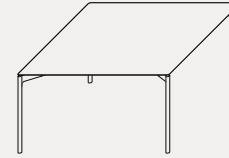
L. 1400 H. 715 P. 1400
W. 55" H. 28¼" D. 55"

Graceland
—Christophe Pillet



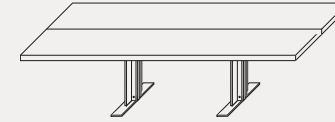
Ø 1585 H. 735
Ø 62½" H. 29"

Luce
—Piero Lissoni



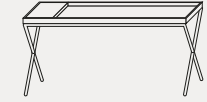
L. 1400 – 1585 H. 735 P. 1400 – 1585
W. 55" – 62½" H. 29" D. 55" – 62½"

Memo
—Piero Lissoni

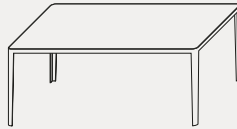


L. 3500 – 4000 H. 745 P. 1090
W. 137¼" – 157½" H. 29¼" D. 43"

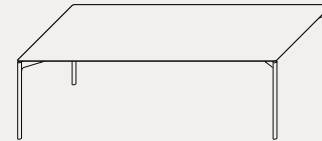
Novel
—Christophe Pillet



L. 1650 H. 800 P. 460
W. 65" H. 31½" D. 18"

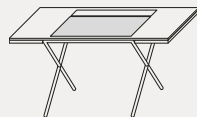


L. 1800 H. 715 P. 900
W. 70¾" H. 28¼" D. 35½"
L. 2400 H. 715 P. 1000
W. 94½" H. 28¼" D. 39¼"



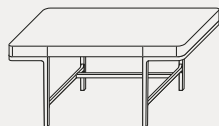
L. 1000 – 1090 H. 735 P. 1800 – 2000 – 2200 – 2400
W. 39¼" – 43" H. 29" D. 70¾" – 78¾" – 86 ½" – 94½"

Novelist
—*Christophe Pillet*



L. 1450 H. 755 P. 610
W. 57" H. 29¾" D. 24"

Victor
—*Roberto Lazzeroni*



L. 1660 H. 760 P. 700
W. 65¼" H. 30" D. 27½"

3-Pod
—*Francesco Rota*



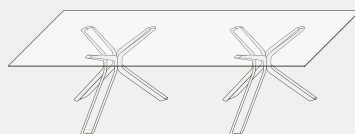
Versione vetro
Glass version

Ø 1400 H. 717
Ø 55" H. 28¼"



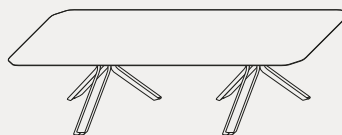
Versione legno
Wooden version

L. 1395 H. 731 P. 1435
W. 55" H. 28¾" D. 56½"



Versione vetro
Glass version

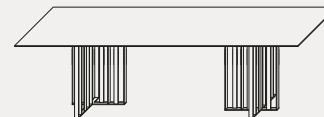
L. 2800 H. 717 P. 1100
W. 110¼" H. 28¾" D. 43¼"



Versione vetro
Glass version

L. 2800 H. 731 P. 1090
W. 110¼" H. 28¾" D. 43"

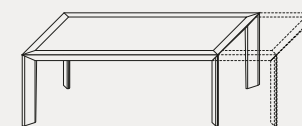
Shade
—*Francesco Rota*



L. 2500 H. 730 P. 1000
W. 98½" H. 28¾" D. 39¼"

L. 3500 H. 730 P. 1100
W. 137¾" H. 28¾" D. 43¼"

Thera
—*Carlo Marelli e
Massimo Molteni*



L. 1800 (2400 allungato) H. 730 P. 900
W. 70¾" (94½" extended) H. 28¾" D. 35½"

Wow
—*Toan Nguyen*



Ø 1600 / 1800 H. 730
Ø 63" / 70¾" H. 28¾"

Bea
— Roberto Lazzeroni



L. 555 H. 755 P. 525
W. 21¼" H. 29¾" D. 20¾"

Bai Lu
— Neri & Hu



L. 510 H. 695 P. 525
W. 20" H. 27¼" D. 20¾"

Daiku
— Piergiorgio Cazzaniga



L. 475 H. 780 P. 500
W. 18½" H. 30¾" D. 19¾"

Eydo
— Francesco Rota



L. 1610 H. 880 P. 760
W. 63½" H. 34¾" D. 30"

Hati
— Piero Lissoni



L. 510 H. 770 P. 526
W. 20" H. 30¾" D. 20¾"

Lady Jane
— Christophe Pillet



L. 755 H. 900 P. 925
W. 29¾" H. 35½" D. 36½"



L. 585 H. 770 P. 526
W. 23" H. 30¾" D. 20¾"

Lennox
—Gordon Guillaumier



L. 1040 H. 690 P. 810
W. 41" H. 27¼" D. 32"

Popsi
—Ferruccio Laviani



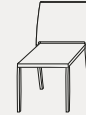
L. 678 H. 690 P. 725
W. 26¾" H. 27¼" D. 28½"

Tabby
—Gordon Guillaumier



L. 620 H. 745 P. 540
W. 24½" H. 29¼" D. 21¼"

Toa
—Officinadesign Lema



L. 450 H. 760 P. 510
W. 17¾" H. 30" D. 20"

Werner
—Roberto Lazzeroni



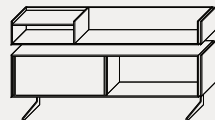
L. 730 H. 790 P. 640
W. 28¾" H. 31" D. 25¼"

Wing
—Werner Aisslinger



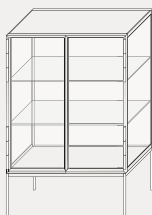
L. 715 H. 730 P. 620
W. 28¼" H. 28¾" D. 24½"

Court Yard
— *Francesco Rota*



L. 1600 H. 870 P. 320
W. 63" H. 34½" D. 12½"

Galerist
— *Christophe Pillet*



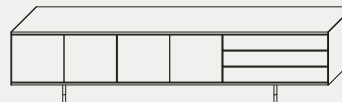
L. 1130 H. 1720 P. 540
W. 44½" H. 67¾" D. 21¼"

Glance
— *Matteo Nunziati*



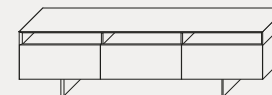
L. 1200 H. 1700 P. 450
W. 47¼" H. 67" D. 17¾"

Long Island
— *Christophe Pillet*



L. 3000 H. 700 P. 500
W. 118" H. 27½" D. 19¾"

Marble Arch
— *Matteo Nunziati*

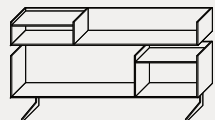


L. 2300 H. 625 P. 470
W. 90½" H. 24½" D. 18½"

Nine
— *Alessandro Dubini*



L. 500 H. 1294 P. 500
W. 19¾" H. 51" D. 19¾"

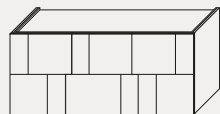


L. 1600 H. 870 P. 320
W. 63" H. 34½" D. 12½"



L. 810 H. 455 P. 410
W. 32" H. 18" D. 16¼"

Ortelia
—Carlo Marelli e
Massimo Molteni



L. 1740 H. 790 P. 520
W. 68½" H. 31" D. 20½"

Picture
—Cairoli&Donzelli



L. 2215 H. 700 P. 530
W. 87¼" H. 27½" D. 20¾"

Rainbow
—Roberto Lazzeroni



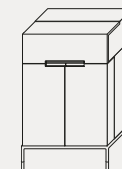
L. 2250 H. 700 P. 500
W. 88½" H. 27½" D. 19¾"

Steward
—Christophe Pillet



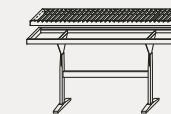
L. 800 H. 1060 P. 540
W. 31½" H. 41¼" D. 21¼"

Winston
—Christophe Pillet

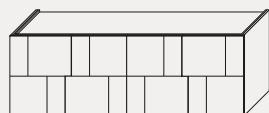


L. 800 H. 1300 P. 500
W. 31½" H. 51¼" D. 19¾"

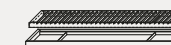
Booken
—Raw Edges



L. 1300 H. 650 P. 320
W. 51¼" H. 25½" D. 12½"



L. 2200 H. 790 P. 520
W. 86½" H. 31" D. 20½"



L. 1300 H. 40 P. 320
W. 51¼" H. 1½" D. 12½"

Koala

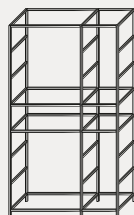
—Ludovica e
Roberto Palomba



L. 132 H. 1450 P. 200
W. 5¼" H. 57" D. 7¾"

Plain

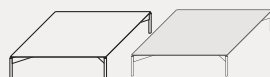
—Francesco Rota



L. 1035 H. 1829 P. 346
W. 40¾" H. 72" D. 13½"

Cruise

—Officinadesign Lema



L. 1200 H. 250 P. 1200
W. 47½" H. 8" D. 47½"

Deck

—Christophe Pillet



L. 1000 H. 190 P. 1000
W. 39¼" H. 7½" D. 39¼"

L. 1200 H. 190 P. 1200
W. 47¼" H. 7½" D. 47¼"

Fence

—Christophe Pillet



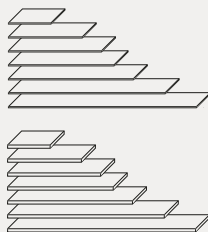
L. 1500 H. 370 P. 380
W. 59" H. 14½" D. 15"

Flowers

—Roberto Lazzeroni



L. 600 H. 550 P. 511
W. 23½" H. 21¾" D. 20"

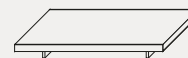


L. 457 / 793 / 1000 / 1135 / 1342 / 1684 / 2020
H. 15 / 35 P. 314
W. 18" / 31¼" / 39¼" / 44¾" / 52¾" / 66¼"
/ 79½" H. ½" / 1½" D. 12¼"



L. 1400 H. 205 P. 700
W. 55" H. 8" D. 27½"

L. 1800 H. 205 P. 700
W. 70¾" H. 8" D. 27½"



L. 1400 H. 190 P. 700
W. 55" H. 7½" D. 27½"

L. 1800 H. 190 P. 700
W. 70¾" H. 7½" D. 27½"



L. 600 H. 370 P. 511
W. 23½" H. 14½" D. 20"



Ø 1200 H. 205
Ø 47½" H. 8"

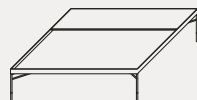


L. 1098 H. 370 P. 936
W. 43¼" H. 14½" D. 36¾"



L. 1295 H. 370 P. 1104
W. 51" H. 14½" D. 43½"

Mansion
—*Christophe Pillet*

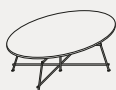


L. 1200 H. 305 P. 1200
W. 47¼" H. 12" D. 47¼"

Mr. Zheng
—*Roberto Lazzeroni*



Ø 520 H. 520
Ø 20½" H. 20½"



Ø 900 H. 340
Ø 35½" H. 13½"
Ø 1200 H. 340
Ø 47¼" H. 13½"



L. 1800 H. 340 P. 1000
W. 70¾" H. 13½" D. 39¼"

Note
—*LucidiPevere*



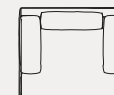
L. 520 H. 495 P. 430
W. 20½" H. 19½" D. 17"

Silo
—*Studio Kairos*



L. 500 H. 480 P. 380
W. 19¾" H. 19" D. 15"

Aberdeen
—*Officinadesign Lema*



L. 2000 – 2300 H. 660 P. 1010
W. 78¾" – 90½" H. 26¾" D. 39¾"



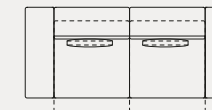
L. 2000 – 2300 H. 660 P. 1010
W. 78¾" – 90½" H. 26¾" D. 39¾"



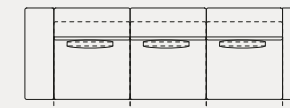
p. 90-91

L. 2780 H. 660 P. 1010
W. 109½" H. 26¾" D. 39¾"

Brick Lane
—*Christophe Pillet*



L. 2760 H. 560 – 770 P. 1200 – 1380
W. 108¾" H. 22" – 30¾" D. 47¼" – 54¼"



p. 82-83

L. 3760 H. 560 – 770 P. 1200 – 1380
W. 148" H. 22" – 30¾" D. 47¼" – 54¼"

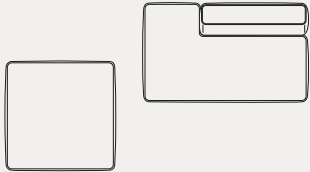
* Nota: Per tutti i divani consultare il catalogo generale Soft e il relativo listino per verificare tutte le possibili composizioni.

* Note: For all the sofas please refer to Soft general catalogue and price list to verify all possible configurations.

Cloud

—Francesco Rota

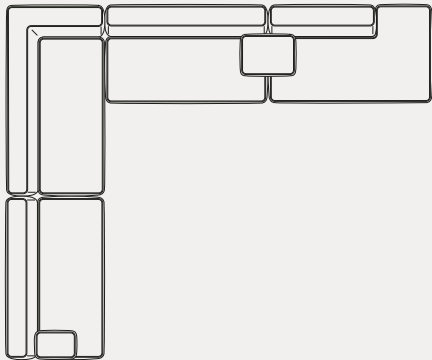
Esempi di composizioni
Composition examples



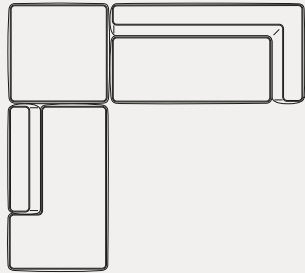
p. 87

L. 1800 H. 630 P. 680
W. 70¼" H. 24¾" D. 26¾"

Pouf
L. 1080 H. 370 P. 1080
W. 42½" H. 14½" D. 42½"

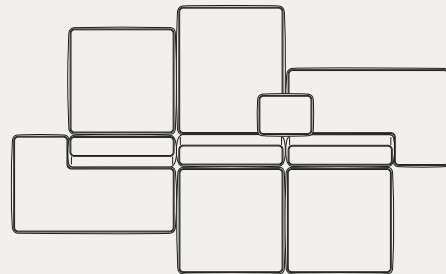


L. 4680 H. 630 P. 3900
W. 184¼" H. 24¾" D. 53½"



p. 86

L. 3180 H. 630 P. 2880
W. 125¼" H. 24¾" D. 113½"

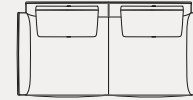


p. 86

L. 4780 H. 630 P. 2810
W. 188¼" H. 24¾" D. 110¾"

Jermyn

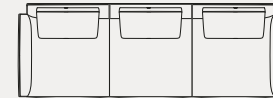
—Gordon Guillaumier



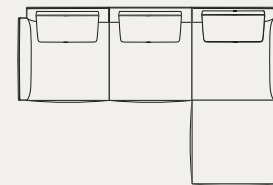
L. 1840 – 2280 H. 920 P. 930
W. 72½" – 89¾" H. 36¼" D. 36½"



L. 820 H. 920 P. 1780
W. 32¼" H. 36¼" D. 70"



L. 2670 H. 920 P. 930
W. 105" H. 36¼" D. 36½"

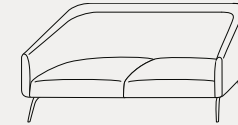


p. 88 -89

L. 2670 H. 920 P. 1780
W. 105" H. 36¼" D. 70"

Kaiwa

—Matteo Nunziati



p. 84 -85

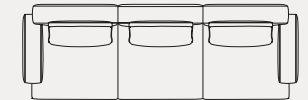
L. 1870 H. 700 P. 810
W. 73½" H. 27½" D. 32"

Mustique

—Gordon Guillaumier

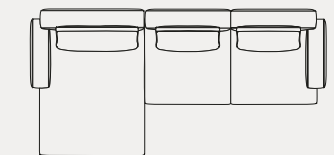


L. 2080 – 2280 – 2480 H. 865 P. 1040
W. 82" – 89¾" – 97¾" H. 34" D. 41"



p. 94

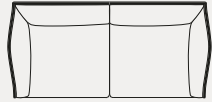
L. 3010 H. 865 P. 1040
W. 118½" H. 34" D. 41"



p. 92 -93

L. 3230 – 3430 – 3630 H. 630 P. 1500
W. 127¼" – 135" – 143" H. 24¾" D. 59"

Ocean Drive
—*Christophe Pillet*



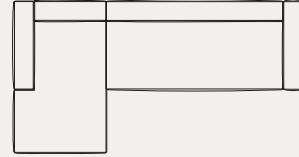
p. 97
L. 2000 – 2300 H. 715 P. 950
W. 78¾" – 90½" H. 28¼" D. 37½"

Snap
—*Francesco Rota*

Esempi di composizioni
Composition examples

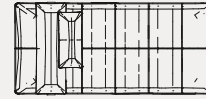


p. 100
L. 1900 – 2150 – 2400 H. 630 P. 980
W. 74¾" – 84¾" – 94½" H. 24½" D. 38½"



p. 101
L. 2880 H. 630 P. 1680
W. 113½" H. 24¾" D. 66¼"

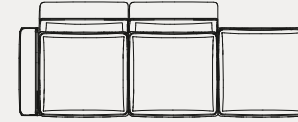
Yard (day bed)
—*Toan Nguyen*



p. 74 -75
L. 2020 H. 335 P. 910
W. 79½" H. 13¼" D. 35¾"

Yard
—*Toan Nguyen*

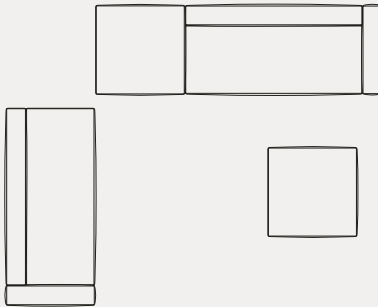
Esempi di composizioni
Composition examples



p. 102 -103
L. 2920 H. 660 P. 900
W. 115" H. 26" D. 35½"

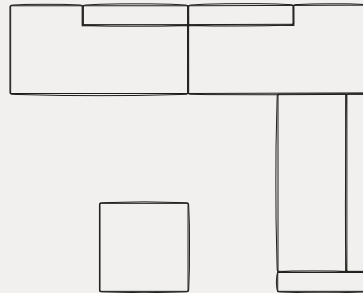


p. 96
L. 2550 H. 715 P. 950
W. 100½" H. 28¼" D. 37½"



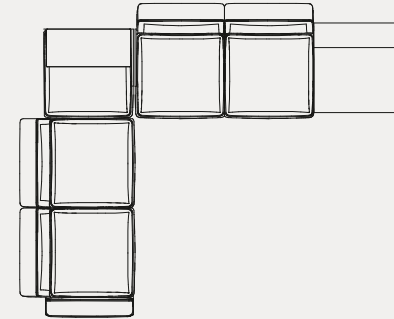
p. 98 -99
L. 3640 x 2660 H. 630 P. 980
W. 143¼" x 104¾" H. 24¾" D. 38½"

Pouf
L. 980 H. 360 P. 980
W. 38½" H. 14¼" D. 38½"



p. 100
L. 3920 x 3160 H. 630 P. 980
W. 154¼" x 124" H. 24¾" D. 38½"

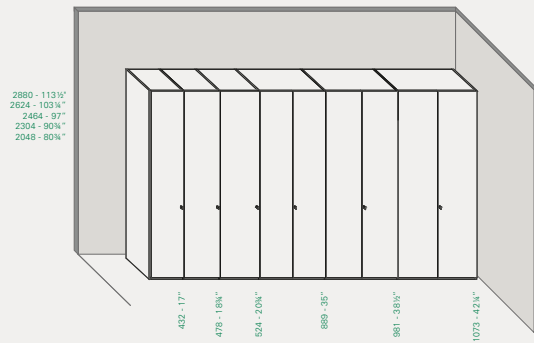
Pouf
L. 980 H. 360 P. 980
W. 38½" H. 14¼" D. 38½"



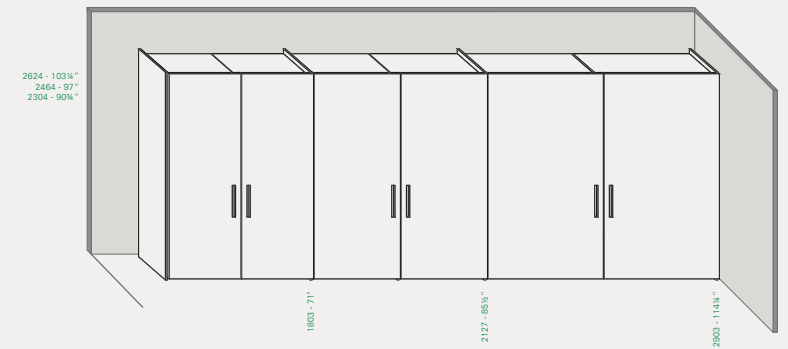
L. 3860 H. 660 P. 3160
W. 152" H. 26" D. 124½"

Armadio al centimetro — Wardrobe

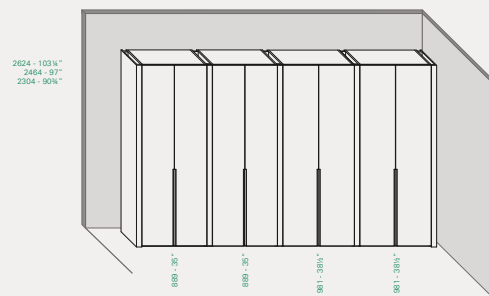
Ante battenti
Hinged doors



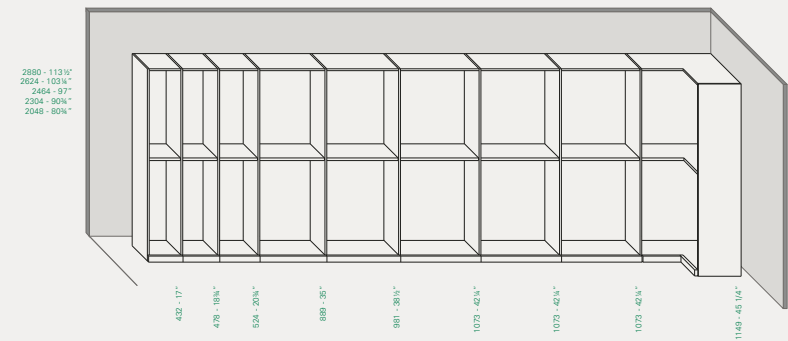
Ante complanari
Coplanar doors



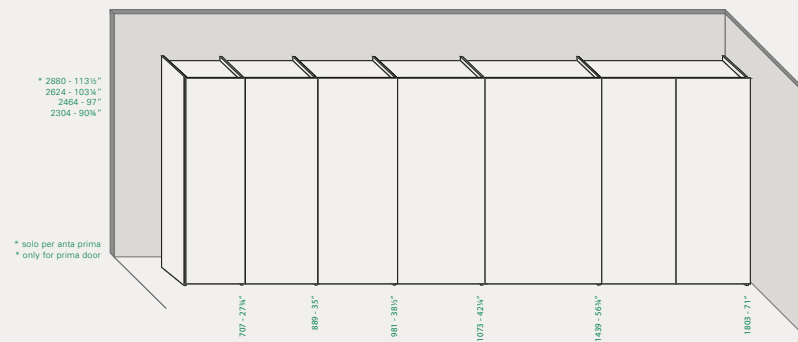
Anta Noa
Noa doors



Open
Without doors



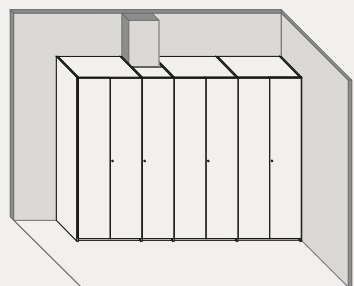
Ante scorrevoli
Sliding doors



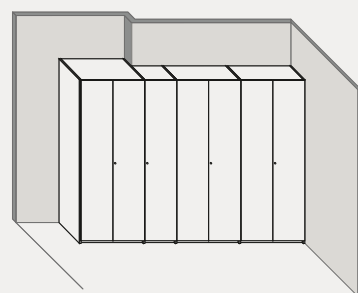
* Nota: Open è una denominazione presente solo nel catalogo fotografico. Per la consultazione a listino considerare armadio al centimetro senza ante con aggiunta di base e di zoccolo di riporto.

* Note: The name Open is only present in the photographic catalogue. When consulting the price list, consider the armadio al centimetro without doors and with the addition of plinth and baseboard.

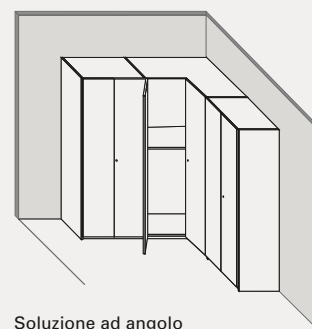
Composizioni per ante battenti
— Compositions for hinged doors



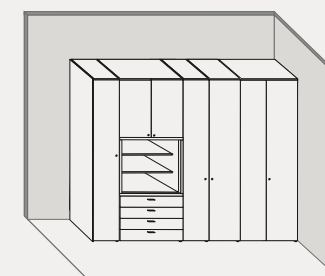
Cambio di profondità per presenza di pilastri
 Change of depth due to a wall pillar



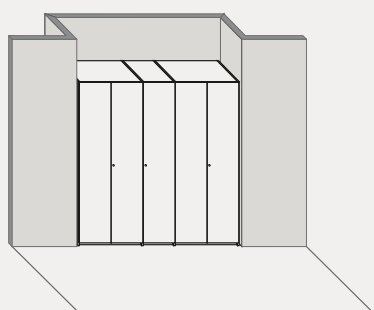
Cambio di profondità
 Depth change



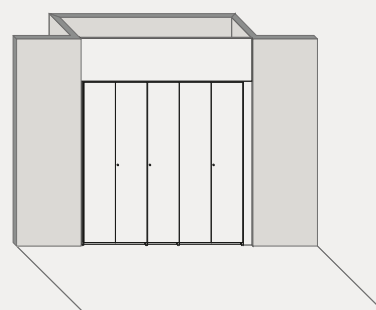
Soluzione ad angolo
 Corner solution



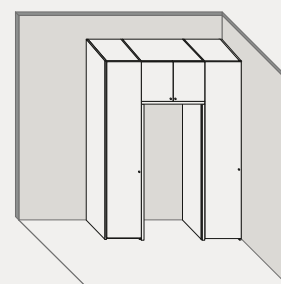
Soluzione con vano e cassetiera a vista
 Solution with open cabinet and chest of drawers



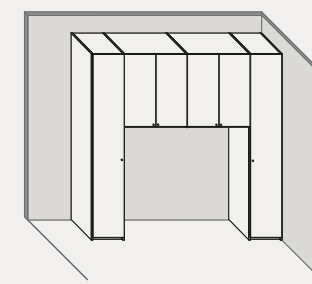
Armadio in nicchia
 Wardrobe in niche



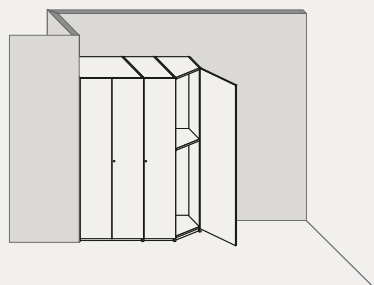
Armadio in nicchia con chiusure laterali e orizzontali
 Wardrobe in niche with horizontal and lateral fillers



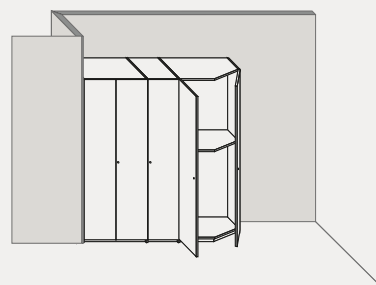
Soluzione passaggio porta
 Passage solution



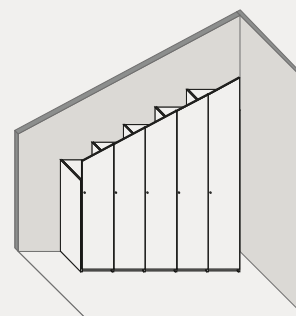
Soluzione a ponte
 Bridge solution



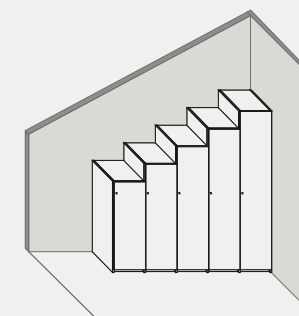
Armadio con elemento terminale
 Wardrobe with end column



Armadio con elemento terminale
 Wardrobe with end column



Soluzione per mansarde
 Solution for attic

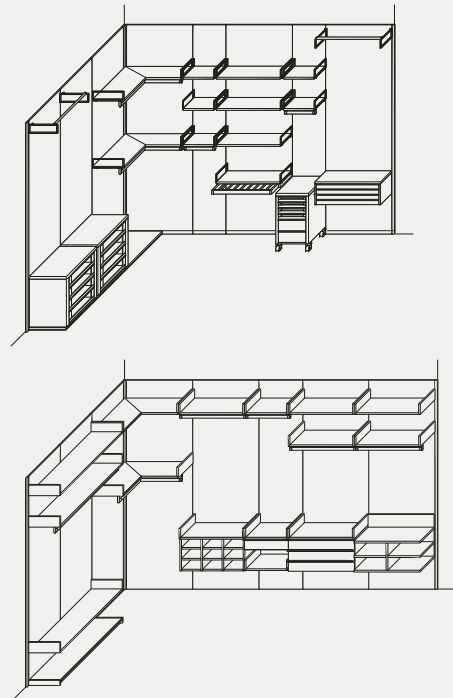
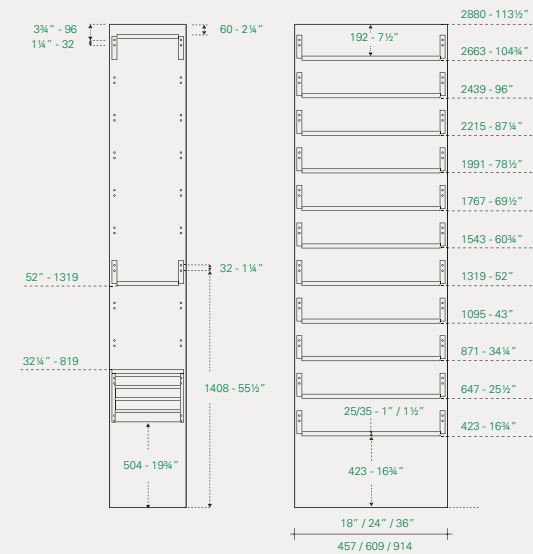
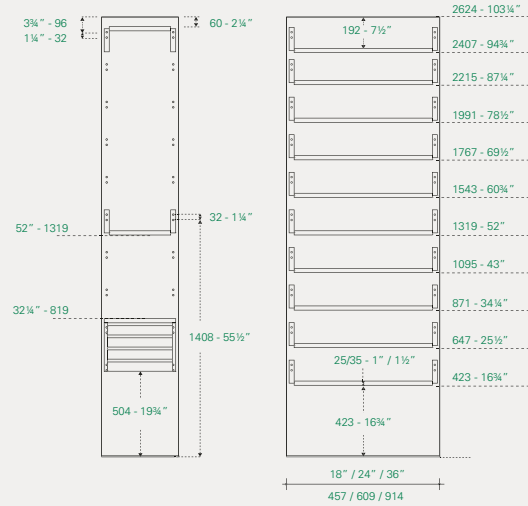
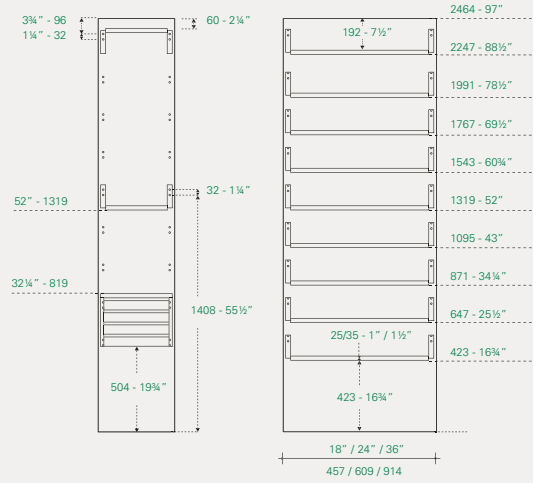


Soluzione a scaletta per mansarde
 Stair solution for attic

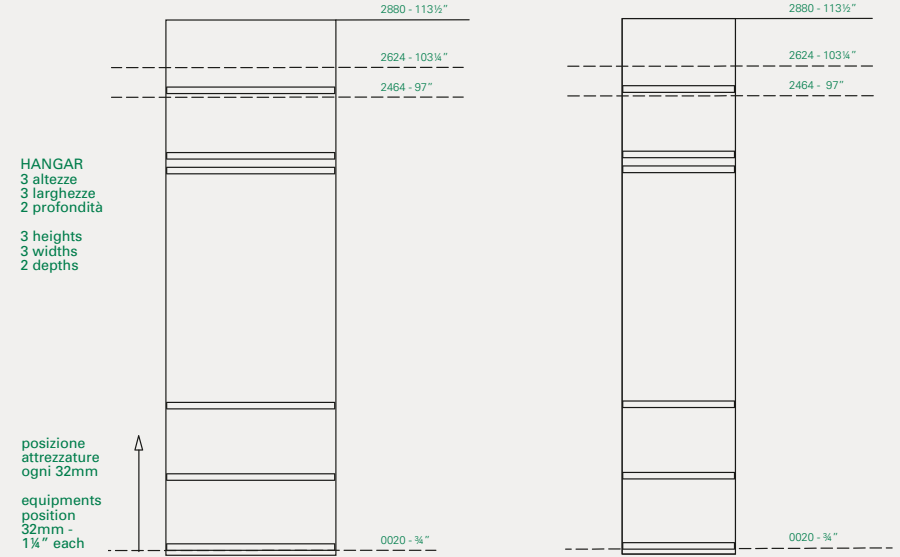
Cabine Armadio

— Walk-in wardrobes

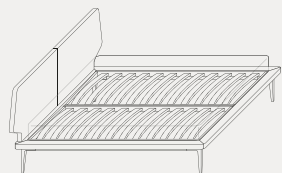
Novenove
modularità, modularity



Hangar
modularità, modularity



Dream view
—Roberto Lazzeroni

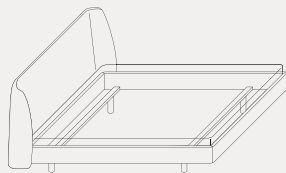


L. 2130 H. 998 P. 1950 / 1730
W. 83¾" H. 39¼" D. 76¾" / 68"

L. 2130 H. 998 P. 2050 / 1830
W. 83¾" H. 39¼" D. 80¾" / 72"

L. 2130 H. 998 P. 2150 / 1930
W. 83¾" H. 39¼" D. 84¾" / 76"

Edel
—Officinadesign Lema

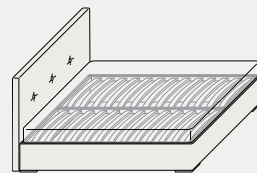


L. 2250 H. 1030 P. 1940 / 1710
W. 88½" H. 40½" D. 76½" / 67¼"

L. 2250 H. 1030 P. 2040 / 1810
W. 88½" H. 41¼" D. 80¾" / 71¼"

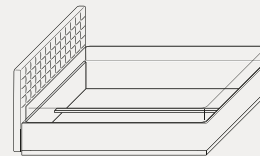
L. 2250 H. 1030 P. 2140 / 1910
W. 88½" H. 40½" D. 84¾" / 75¼"

Madama
—Officinadesign Lema



L. 1830 – 1930 – 2030 H. 1115 P. 2190
W. 72" – 76" – 80" H. 44" D. 86¼"

Picolit
—Officinadesign Lema



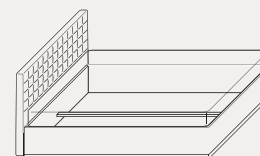
L. 2125 H. 900 P. 1490
W. 83¾" H. 35½" D. 58¾"

L. 2125 H. 900 P. 1690
W. 83¾" H. 35½" D. 66½"

L. 2125 H. 900 P. 1790
W. 83¾" H. 35½" D. 70½"

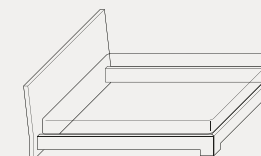
L. 2125 H. 900 P. 1890
W. 83¾" H. 35½" D. 74½"

Versione con contenitore
Storage container version



L. 2150 H. 900 P. 1790
W. 84¾" H. 35½" D. 70½"

Quaranta
—Officinadesign Lema



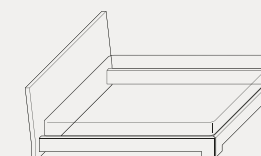
L. 2080 H. 860 P. 1800 / 1610
W. 82" H. 33¾" D. 70¾" / 63½"

L. 2180 H. 860 P. 1900 / 1710
W. 85¾" H. 33¾" D. 74¾" / 67¼"

L. 2180 H. 860 P. 2000 / 1810
W. 85¾" H. 33¾" D. 78¾" / 71¼"

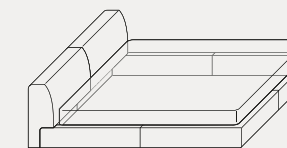
L. 2180 H. 860 P. 2100 / 1910
W. 85¾" H. 33¾" D. 82¾" / 75¼"

Versione con contenitore
Storage container version



L. 2180 H. 860 P. 2000 / 1810
W. 85¾" H. 35½" D. 78¾" / 71¼"

Softland
—Ludovica e
Roberto Palomba



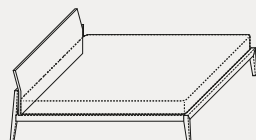
L. 2340 H. 730 P. 1750
W. 92¼" H. 28¾" D. 69"

L. 2340 H. 730 P. 1850
W. 92¼" H. 28¾" D. 72¾"

L. 2340 H. 730 P. 1950
W. 92¼" H. 28¾" D. 76¾"

Theo
—Studio Kairos

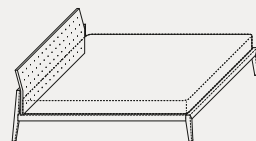
Testata legno
Headboard panel



L. 1565 H. 890 P. 2165
W. 61½" H. 35" D. 85¼"

L. 1665 H. 890 P. 2165
W. 65½" H. 35" D. 85¼"

L. 1765 H. 890 P. 2165
W. 69½" H. 35" D. 85¼"



Testata rivestita in tessuto
Headboard with fabric covering

Flin
—Officinadesign Lema



L. 600 H. 280 P. 476
W. 23½" H. 11" D. 18¾"



L. 1202 H. 280 P. 476
W. 47¼" H. 11" D. 18¾"



L. 1250 H. 655 P. 571
W. 49¼" H. 25¾" D. 22"

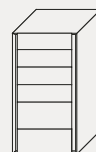


L. 1600 H. 655 P. 571
W. 63" H. 25¾" D. 22½"

Luna
—Carlo Marelli e
Massimo Molteni



L. 600 H. 430 P. 450
W. 23½" H. 17" D. 17¾"

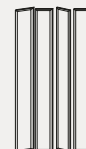


L. 650 H. 1250 P. 510
W. 25½" H. 49¼" D. 20"



L. 1300 H. 700 P. 550
W. 51¼" H. 27½" D. 21¾"

Mirage
—Yoshioka Tokujin



L. 180 H. 1500 P. 80
W. 7" H. 59" D. 3¼"

Notch
—Johan Lindsten



Ø 550 H. 430
Ø 21¾" H. 17"



Ø 850 H. 400
Ø 33½" H. 15¾"

Pouf
—Officinadesign Lema



L. 460 H. 400 P. 460
W. 18" H. 15¾" D. 18"



Ø 580 H. 320
Ø 22¾" H. 12½"

Tod
—Ferruccio Laviani



Ø 520 H. 550
Ø 20½" H. 21¾"



Ø 900 H. 390
Ø 35½" H. 15¼"

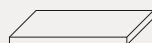
Quarantacinque
—Officinadesign Lema



L. 600 H. 140 P. 480
W. 23½" H. 5½" D. 19"



L. 600 H. 350 P. 480
W. 23½" H. 13¾" D. 19"



L. 1200 H. 100 / 180 P. 586
W. 47¼" H. 4" / 7" D. 23"

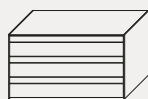


L. 1200 H. 720 P. 540
W. 47¼" H. 28¾" D. 21¼"

Shen
—Cairoli&Donzelli

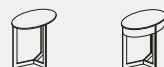


L. 600 H. 350 P. 460
W. 23½" H. 13¾" D. 18"



L. 1270 H. 700 P. 560
W. 50" H. 27½" D. 22"

Sign
—Studio Kairos



Ø 450 H. 300 / 480
Ø 17¾" H. 11¾" / 19"



Ø 600 H. 300 / 480
Ø 23½" H. 11¾" / 19"

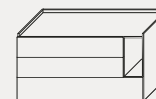
Tip
—Daniel Debiasi - Federico Sandri



L. 427 H. 446 P. 407
W. 16¾" H. 17½" D. 16"



L. 600 H. 446 P. 407
W. 23½" H. 17½" D. 16"

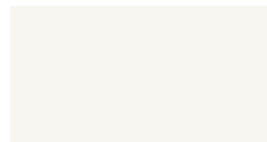


L. 1300 H. 706 P. 547
W. 51¼" H. 27¾" D. 21½"

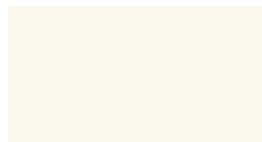


L. 600 H. 1286 P. 497
W. 23½" H. 50¾" D. 19½"

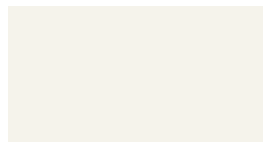
—Lemacolor*trend*



Carta 750



Latte 405



Cigno 700 / Bianco 400



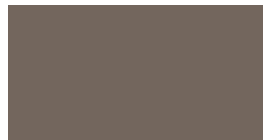
Calcare 801



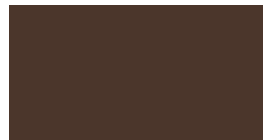
Ghiaia 913



Ombra 803



Cacao 461



Caffé 903



Fumo 906



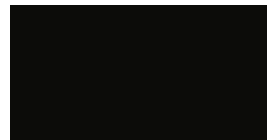
Sabbia 910



Pomice 905



Grafite 918



Lavagna 713



Platino 873



Antimonio 870



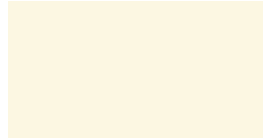
Pepe 804



Salvia 835



Basalto 920



Panna 754



Canapa 707



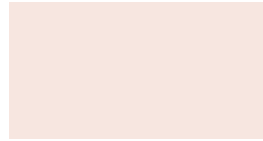
Cedro 811



Senape 462



Mango 845



Petalo 472



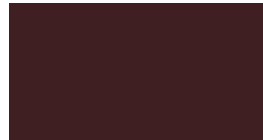
Paprika 826



Amarena 828



Bruciato 477



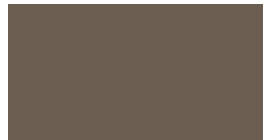
Vinaccia 829



Terracotta 478



Fango 471



Terra 805



Limo 836



Kaki 839



Assenzio 479



Timo 480



Avio 476



Ottano 847

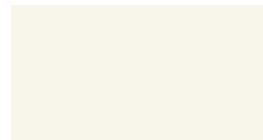


Petrolio 846

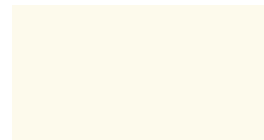


Oltremare 469

—Lemacolor*lucido*



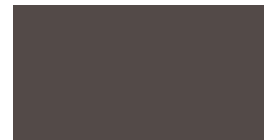
Paper 227



Bianco 200



Nocciola 213



Grigio 205



Scoglio 212



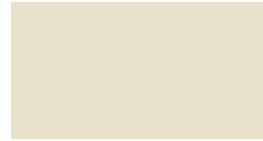
Talpa 233



Nero 215



Marna 237



Beige 211



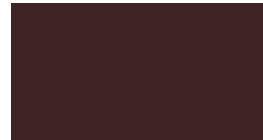
Zolfo 234



Ciliegia 216



Granata 238



Bordeaux 220



Ortica 235



Aneto 232



Ruta 231



Alga 222



Impero 236



Navy 230

— *Essenze, woods*



Rovere Carbone



Rovere Naturale



Rovere Termotrattato

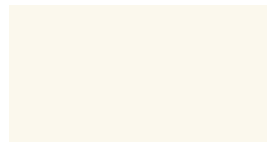


Noce Canaletto



Frassino tinto nero a poro aperto

— *Melaminici, melamine*



Bianco



Lino



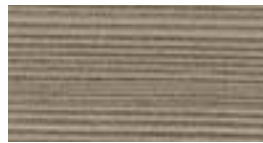
Visone



Larice moka



Larice sbiancato



Larice grigio

— *Cementi, cements*



Cemento medio



Cemento scuro



Pietra Lavica

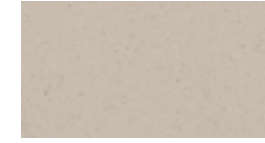
— *Argille, clay*



Ardesia



Creta



Polvere



Sabbia

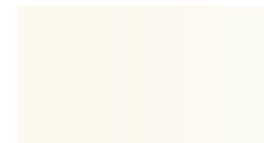


Pece

— *Vetri, glasses*



Bianco



Yogurt



Perla



Avorio



Titanio



Tortora



Grigio



Nero



Aragosta



Rosso



Bronzo riflettente



Riflettente RL



Vetro serigrafato

— *Rivestimenti decorativi tessili,
decorative fabric covering*



Tebe 100



Tebe 101



Tebe 102



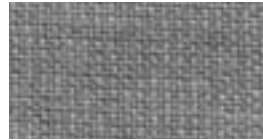
Tebe 103



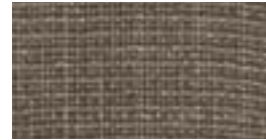
Leda 200



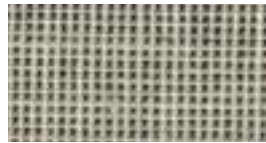
Leda 201



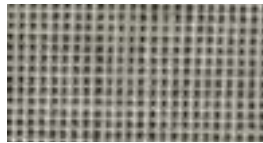
Leda 202



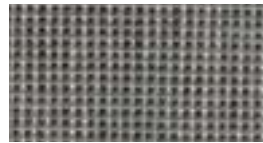
Leda 203



Antea 300



Antea 301

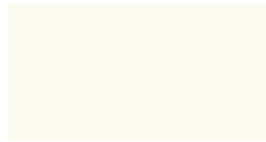


Antea 302



Antea 303

— *Cuoio light, hide leather*



Bianco



Avorio



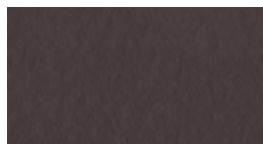
Tortora



Naturale



Grigio



Caffé



Nero

Art direction, design

—Graph.X

Foto

—Santi Caleca

Styling

—Studio Salaris

da pag. 04 a pag. 31

pag. 40.41

pag. 44.45

da pag. 48 a pag. 53

da pag. 58 a pag. 135

pag. 144.145

pag. 148

pag. 160.161

—Patrizia Cantarella

con Rossella Ballabio

da pag. 32 a pag. 39

pag. 46.47

da pag. 54 a pag. 57

da pag. 136 a pag. 141

pag. 147

da pag. 149 a pag. 158

Pre press, retouching

—A. De Pedrini

Stampa

—O.G.M. SpA 2016

Thanks To

ABC Italia

¿Adónde?

Alberto Aspesi

Antonia Janmone

disegni di architettura

Artemide

Bassetti

Bosa

Canova Milano – E15

C&C Milano

CC Tapis

Cinelli

Classicon

Claudia Barbari

Coco-Mat

Compagnia del Tabacco

Davide Mariani

Decha Archjananun

by Specimen

Domus Nova

Draga Obrodovic

D&M Depot

E27

Emme Italia

Essent-ial

Expat

FÀBRICA design studio

Flos

Galleria Bensimon

Gallo

Giorgia Zanellato

Golran

Gong

Gruppo di Installazione

Hybrid-Store

Iittala by Fiskars Italy

I+I

Ilaria I.

Il Fanale

Karman

Knoll

L'arte nel Pozzo

Le Deun Luminaires

Limited Edition by

Effeitalia

L'opificio

Luceplan

Luxit Italiana

Maini Paolo

Mambo

Maria La Rosa

Marsotto

Midali

Millefiori

Nahoor

Neo'

Next Materials

Oluce

Paola C

Paola Paronetto

Paul Smith

Penta light

Portego

Riva 1920

Salvatori

Sant'andrea

Sedicilab

Skillart

Society

Stokkeastad

Studio Lievito

Studio Salaris

Vascolari

Vesoi

Wissenbach

Zafferano

Zoeppritz

Zucchi

Lema s.p.a.

22040 Alzate Brianza

Como - Italy

Strada Statale

Briantea n°2

t +39.031.630.990

f +39.031.632.492

lemamobili.com

LEMA s.p.a.

22040 Alzate Brianza
Como – Italy
Strada Statale
Briantea n° 2
t +39 031 630 990
f +39 031 632 492
lemamobili.com