

Edition — 1

---

# Multiapartment

---

Fully – fitted design





---

## Contents

---

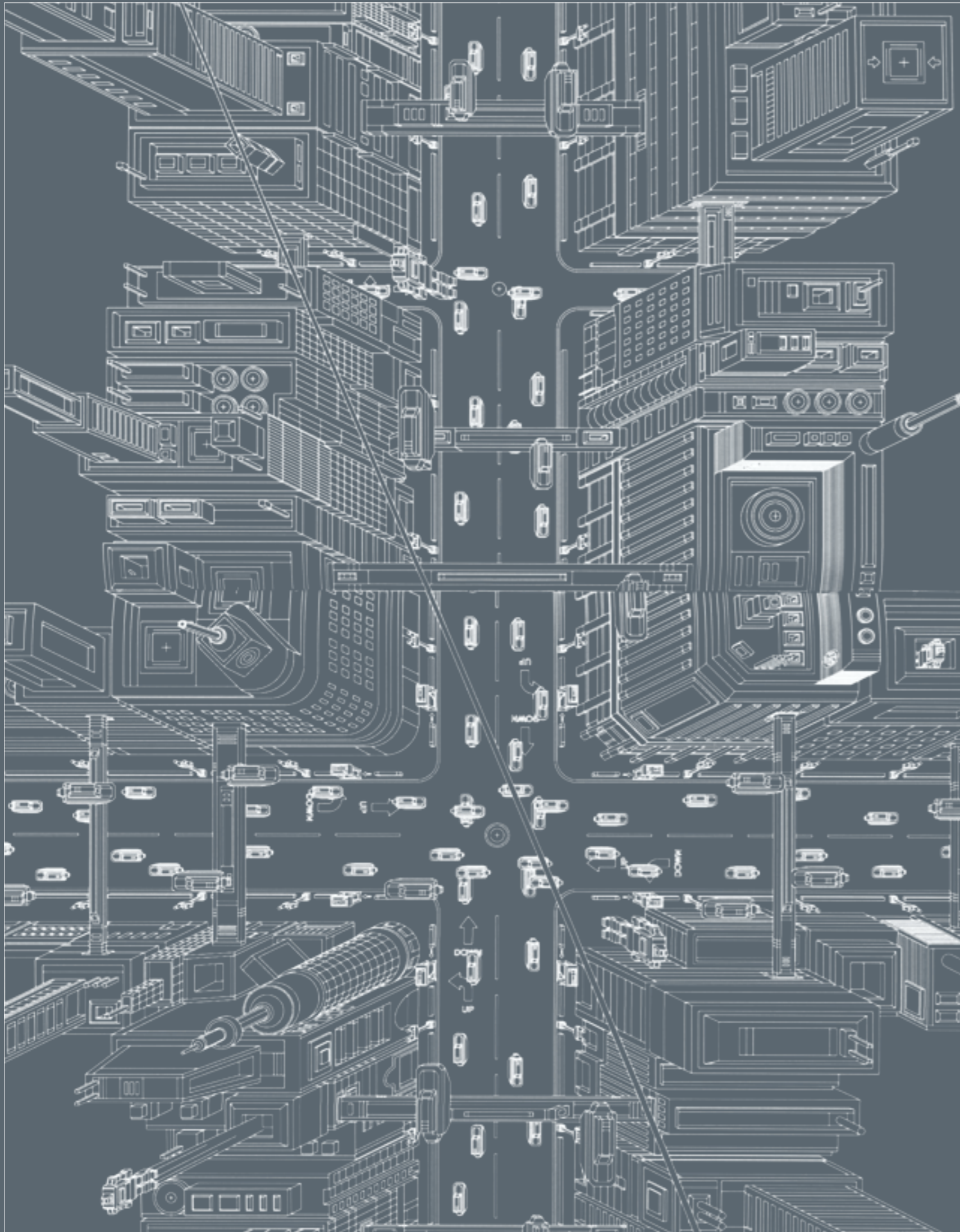
04	—	Introduction
06	—	High-end apartments denote High-end furniture
08	—	Dream and creativity
10	—	Added value
12	—	Project management
14	—	Industrial capability
16	—	Technological advantage
18	—	Design by the centimetre
20	—	Custom-made solutions
22	—	Distinct personality
24	—	True flexibility
26	—	After-sales service
28	—	Plus
30	—	Portfolio
32	—	Cheyne Terrace, London
36	—	Neo Bankside, London
40	—	Battersea Power Station, London
44	—	Holland Green, London
48	—	One Park, Shanghai
52	—	The Chilterns, London
56	—	Lema Group experience
60	—	Projects

---

## Introduction

---

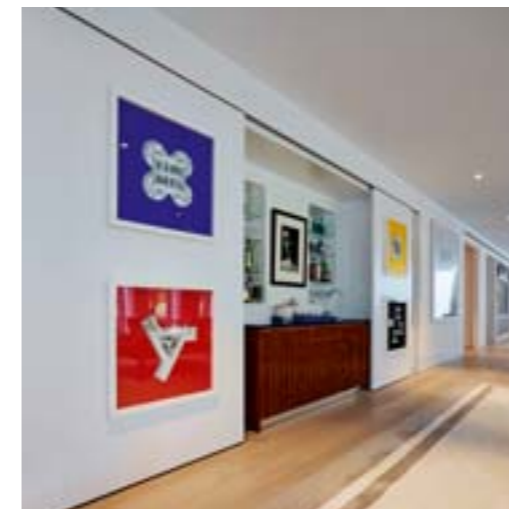
**We present a contemporary approach to multi-residential property, one that caters specifically to an exclusive clientele. Using its considerable experience and expertise, Lema creates prestigious environments for the discerning client by providing a customisation service to develop personalised furnishings that are the very essence of high-end Italian design. The result is a luxury home ready to move into, where all the primary furnishings are already installed.**



## High-end apartments denote High-end furniture

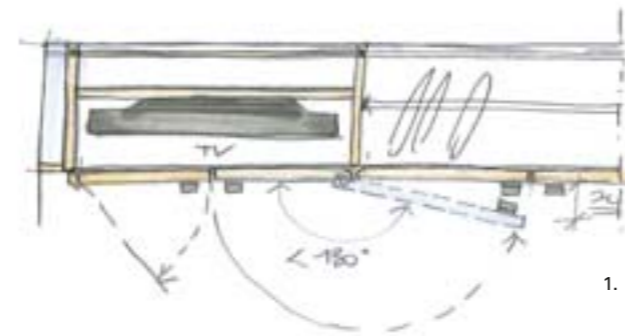
The realisation of high-end solutions entails the ability to understand the expectations of high-end clients: all-round quality, a wide range of finishes, aesthetic appeal, modular design and service.

By incorporating these perfectly integrated high-end furnishings, the client gains added value that helps generate sales.



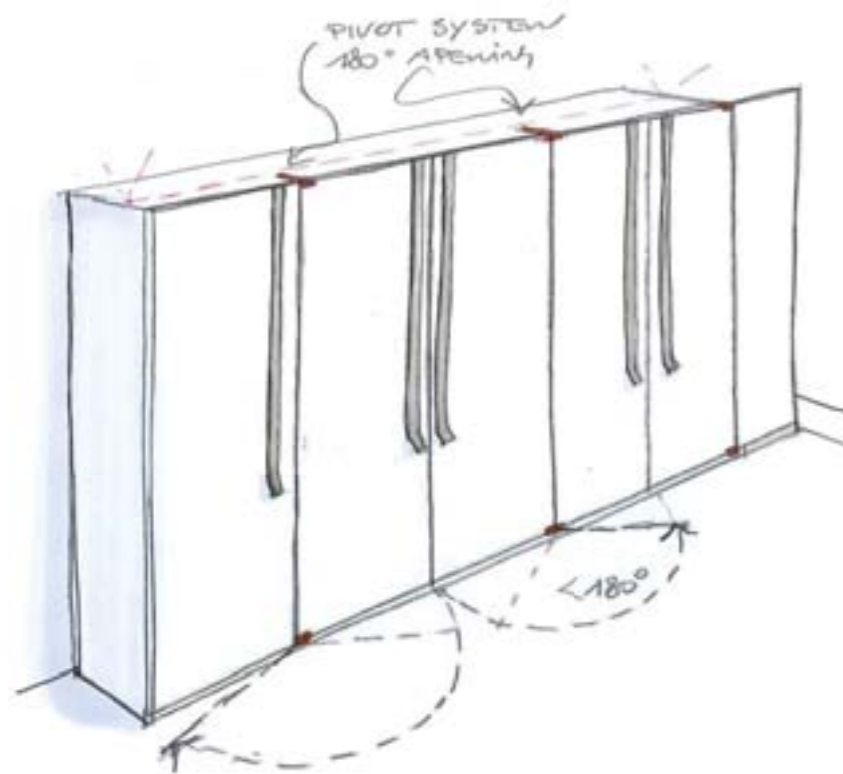
## Dream and creativity

For a dream to develop into a viable project, the client must be able to dialogue with a qualified partner who can then interpret and translate every element into a concrete result. Each project develops into a unique and unrepeatable solution through a shared path of creativity and logistic development.



1.  
King Cross Project, London:  
preliminary drawings for TV  
stand featuring 180° hinged  
doors.

2. — 3.  
King Cross Project, London:  
180° and 120° central and side  
pivot hinges.



## Added value

Through a combination of partnership, planning, consultancy and customization, Lema is able to oversee and manage work practices, schedules and costs alongside the client, from the initial preliminary project through to the final installation. Lema's close partnerships with other providers means that structural work can also be carried out and integrated with the furnishings.



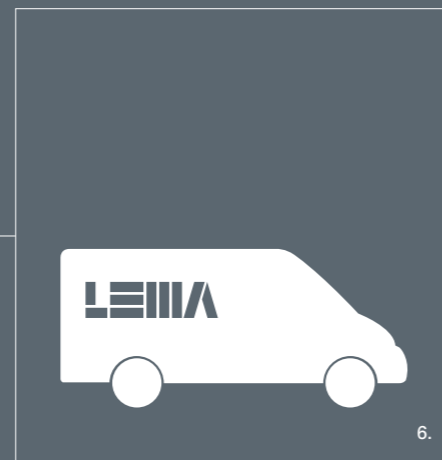
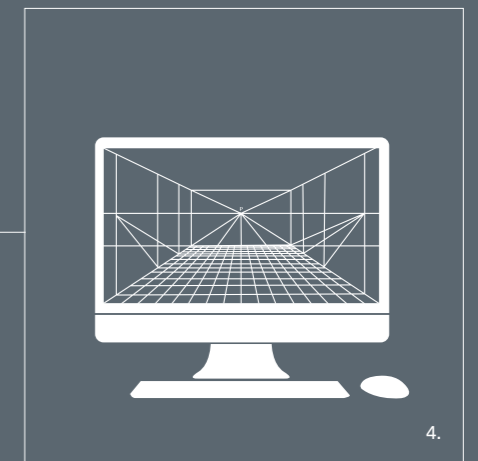
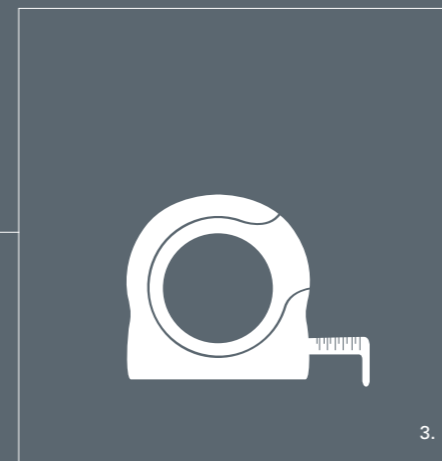
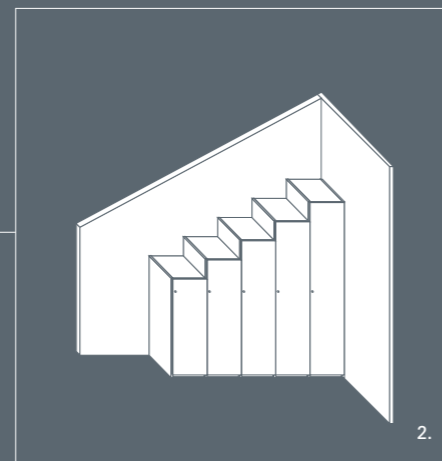
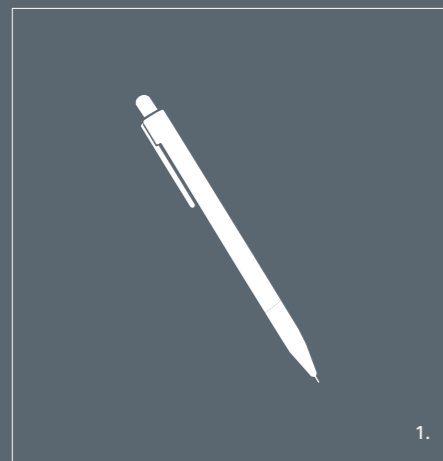
1. — 2.  
Cheyne Terrace, London:  
design drawings and  
completion of customised  
wardrobes.

3. — 4.  
Cheyne Terrace, London:  
wardrobe conceived as a  
furnishing element to separate  
the bedroom from the walk-  
in wardrobe.



## Project management

Knowledge, skills, tools and techniques to move an initial idea to a fully-fledged and unique project of exclusive furnishing units, fittings and accessories, maintaining a balance between expectations and results and adhering scrupulously to budget restraints.



1. Preliminary project Feasibility studies.
2. Creation of mock-up for the Project Manager and Contractor.
3. Site survey.
4. Development and submission of working drawings. Product customization – reworking.

5. Principal products generated in-house. Complementary products generated by trusted and proven external contractors.
6. Transportation.
7. Installation.



## Industrial capability

Advanced production facilities and cutting-edge technology enable Lema to provide a continuous and abundant supply of high-end designer furniture of the utmost quality, while large scale manufacturing creates cost efficiencies that can be passed on to the client.



1.

1. Factory Giussano  
Monza Brianza, Italy  
Area: 18.000 sqm  
Employees: 65
2. Factory Alzate Brianza  
Como, Italy  
Area: 30.000 sqm  
Employees: 165
3. — 4. Factory Inverigo  
Como, Italy  
Area: 6.000 sqm  
Employees: 48



2.



3.



4.

## Technological advantage

The Lema technical department never ceases in exploring new technologies, materials and working practices. It possesses unrivalled experience coupled with excellent design and execution skills to accompany the client through every step of the product development process - a corroborative process that guarantees outstanding quality.



1.

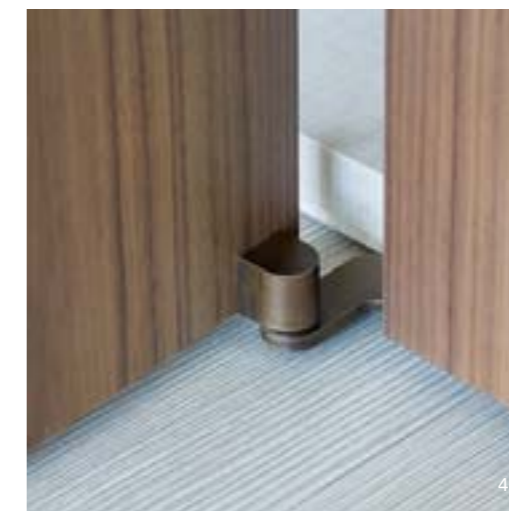
1. Armadio al centimetro: detail of illuminated glass shelf with bronzed aluminium frame.
2. Noa wardrobe: detail of recessed handles with led lighting.
3. Aria wardrobe: detail of lower hinge.
4. Barthsquare Project: London, detail of pivot hinge.
5. Aria wardrobe: detail of aluminium door frame and customised hinge cover plate.



2.



3.



4.



5.

## Design by the centimetre

From the company that invented the 'Armadio al Centimetro' comes the capacity to provide a vast range of flexible and modular furnishing units that combine into innumerable arrangements, making it possible to associate different types of openings, doors, interiors, colours, finishes and fittings to create ingenious and original solutions.



## Custom-made solutions

The flexibility of the Lema system enables designers to take the concept of the wardrobe much further than is normally possible. The various elements can be combined in numerous ways to create corner and linear solutions at the desired height in order to satisfy the requirements of any architectural or structural elements already present.

The Lema department is fully skilled in designing solutions for any type of space, taking full advantage of the innate flexibility of the internal equipment and modular units.



## Distinct personality

Furnishing units designed for a prestigious setting must offer a wide range of aesthetic solutions and a high degree of functionality. Tastes, moods and styles 'dictated' by leading designers are in a constant state of evolution and Lema responds and often pre-empt these trends with an infinite palette of flexible solutions to create unique solutions that are without equal.



1.

1. Hangar walk-in wardrobe: detail of display case with glass shelf.
2. Warm wardrobe: leather-lined door with recessed handles in bronzed metal.
3. Armadio al centimetro: detail of cover plates.
4. Elegant wardrobe: detail of recessed handle with wood back plate.
5. Text wardrobe: detail of glass shoe rack.



2.



3.



4.

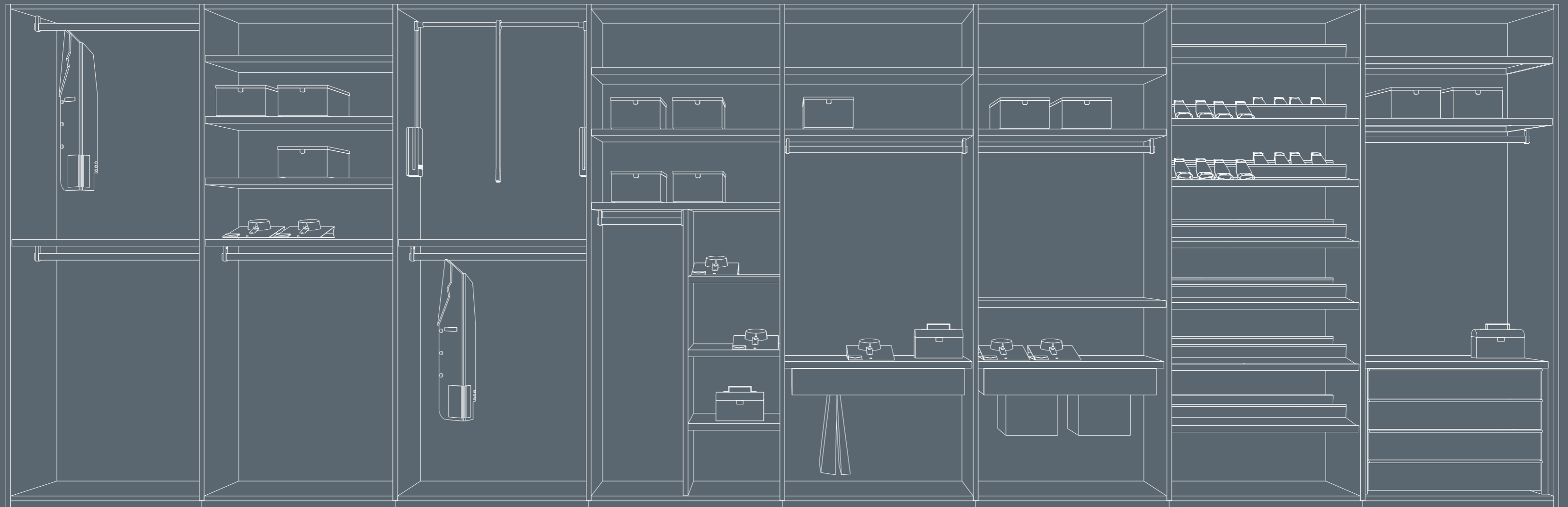


5.

## True flexibility

Lema systems offer a perfect balance between the organisation of the interior space and the exterior volumes, between function and aesthetics.

Every composition is fully customizable owing to Lema's ability to translate the client's wishes and expectations into an organised process to create authentic and exclusive solutions.



## After-sales service

Should updates, extensions or changes be required following the initial installation, a worldwide network of over five hundred showrooms provides direct contact with Lema, offering a team of qualified dealers to furnish the client with all the assistance required.

Lema guarantees that all the materials, finishes, accessories and complements will continue to be available in the future, as will the ability to provide further customized updates to the original designs.



**500 Lema  
showrooms  
all over the  
world**



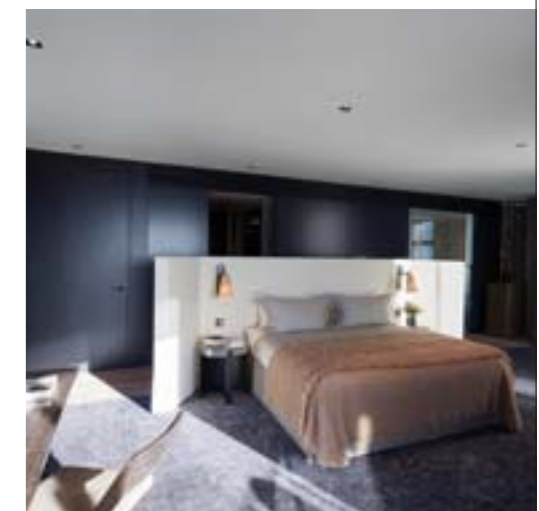
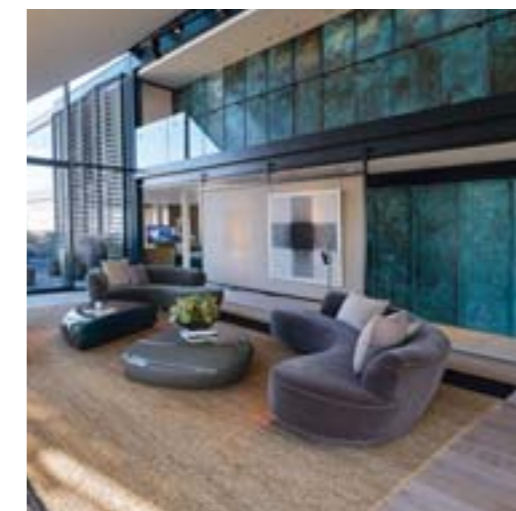
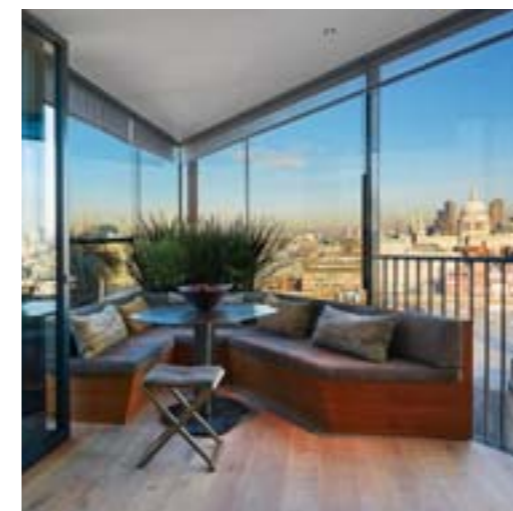
## Plus

Homes with added value.

High-end furniture equates with high-end apartments.

– Meticulous use of space and customised furnishing units. – High quality furniture from outstanding brands at competitive prices. – Apartments can be used immediately after purchase.

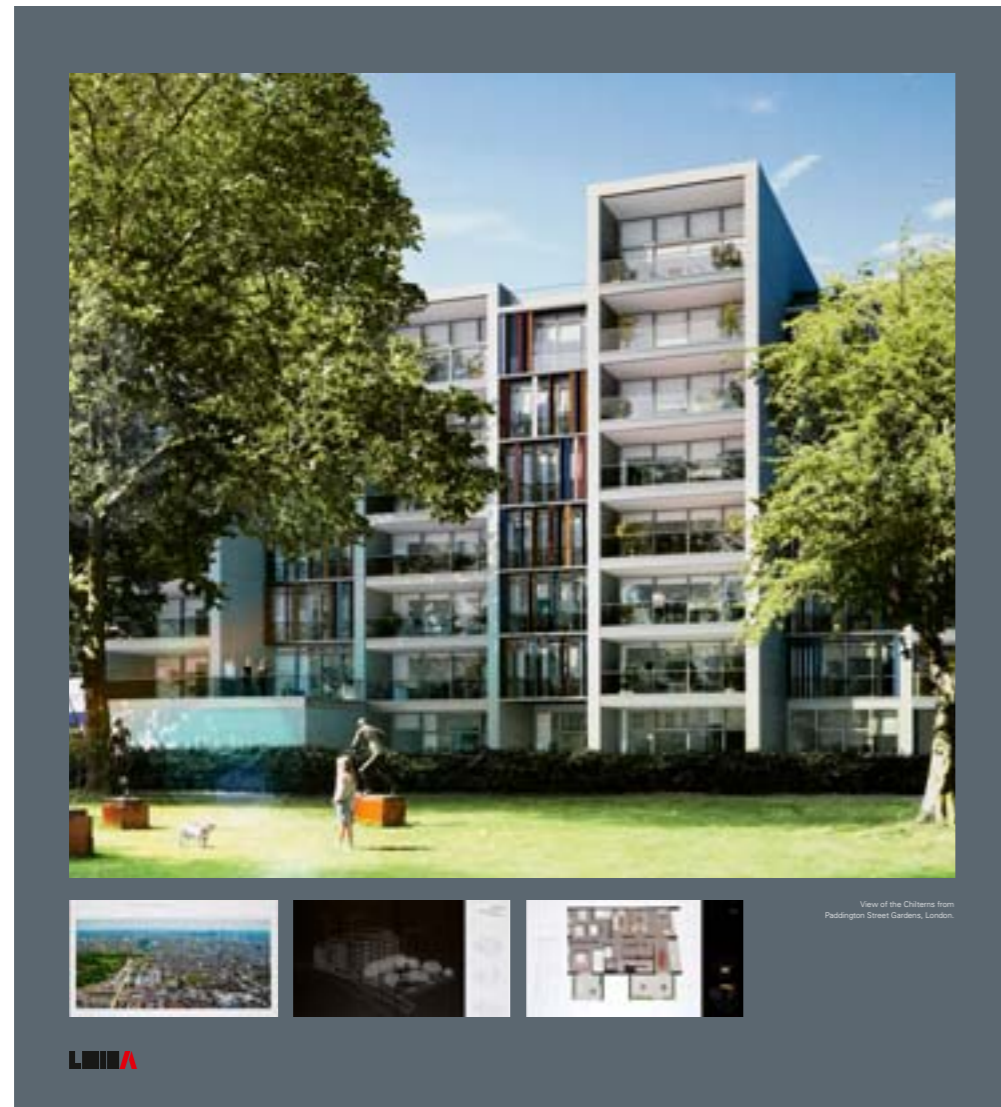
– Furnishing units can be further customized at a later date through the Lema sales networks of over five hundred Lema retailers. Building facility managers are able to manage any routine or emergency interventions using the readily available range of spare parts.





# Portfolio

Lema has completed numerous prestigious projects worldwide, constituting a portfolio of exclusive creations requiring the highest levels of planning, production, organisation and logistics combined with a blend of technological and human resources, manufacturing and craftsmanship.



# LUMA

Exclusive Address For Über Premium Living  
Freehold - Prime Orchard Locale

Where a world of superior design and quality finishes is a norm, be suitably gratified by exceptional at its peak. Experience the privilege of an exclusive urban lifestyle that only a select few get to enjoy. Close to exciting shopping and prestigous, you are in an enclave of the most premier districts where life is truly contemporary. With Orchard Road, the Integrated Resort and famous network for entertainment as neighbours, you are indeed embraced in unparalleled luxury.

- A 27-storey masterpiece of full-height glass architecture
- 75 exclusive 1 & 2-Bedroom units of modern elegance
- Located in central Orchard Road, SHOPPING SCHOLES, LEMA, MONTOMO LUMI and SCHEER
- Located just minutes to the Bay Terraces - 2 swimming pools, water park, heated and cold water jacuzzis, state-of-the-art gym, children's playground, function room, meeting pavilion and BBQ area.
- Fully equipped with high-tech home automation system from JUNG
- Minutes to Orchard Road, Integrated Resorts, Clarke Quay, Robertson Quay and other famous venues.

APARTMENT INTERIOR PHOTOGRAPHS

SHOWFLAT AT LEONE HILL, OPENING DAILY FROM 10AM TO 7PM  
ENQUIRIES: 9100 9898, 8300 9391

# iR

The ideal environment combining with your happiness

...the most sophisticated and modern design and construction... the most sophisticated and modern design and construction... the most sophisticated and modern design and construction...

# LUMA

# ESPADA

OWN THE ULTIMATE LUXURY

IN PRIME ORCHARD LOCALE

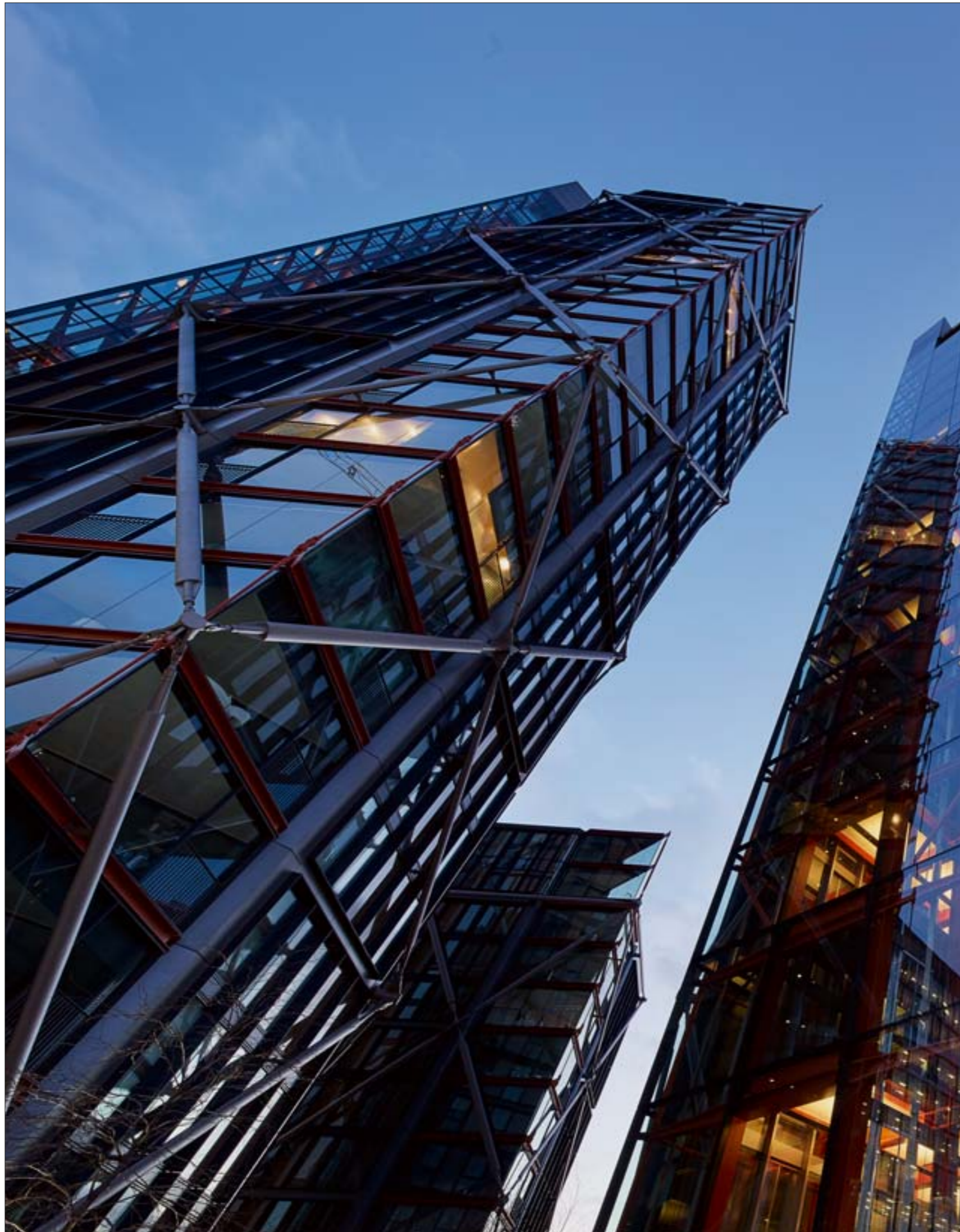
## Cheyne Terrace, London



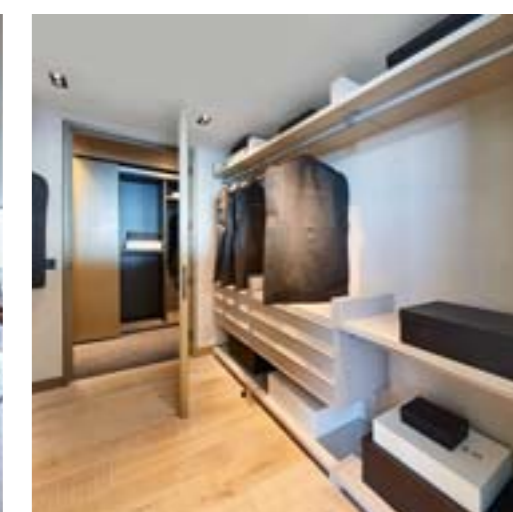
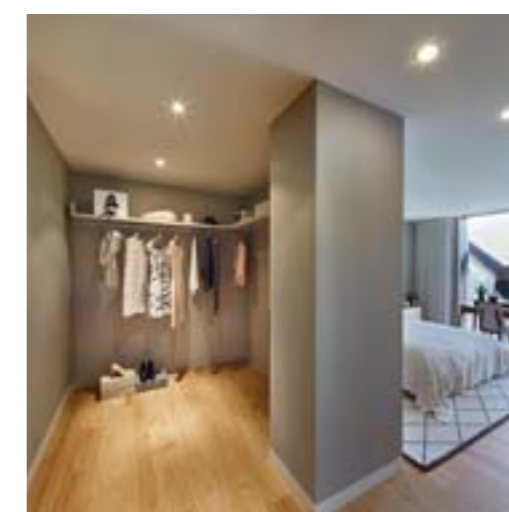
**2014**  
**80 apartments**  
**105 wardrobes**  
**30 media wall cabinets**  
**181 vanity cabinets**



## Neo Bankside, London



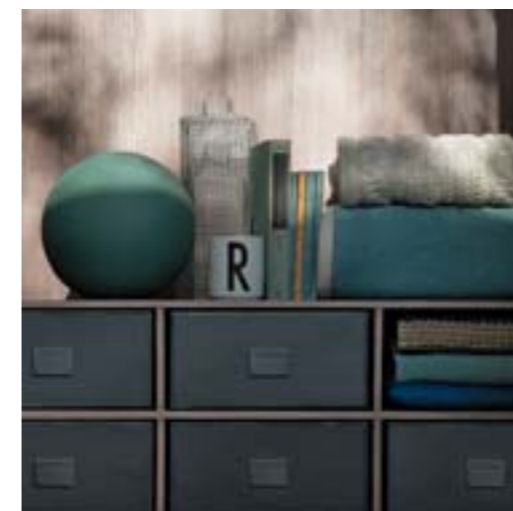
**2011**  
**220 apartments**  
**450 wardrobes**



## Battersea Power Station, London



**2016**  
**2300 wardrobes,**  
**walk-in wardrobes**



## Holland Green, London





**2015**  
**52 apartments**  
**40 walk-in wardrobes**  
**110 wardrobes**



## One Park, Shanghai



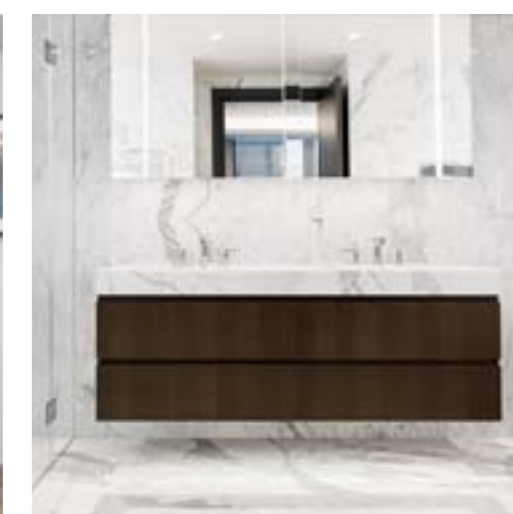
**2015**  
**325 apartments**  
**1480 wardrobes**



## The Chilterns, London



**2016**  
**45 luxury apartments**  
**complete furnishing**



## Lema Group experience

The strength of the Lema Group, its vast experience of large projects, its in-house production facilities and highly specialised know-how are just a few of the advantages that have enabled Lema to realize so many prestigious multi-apartment, corporate, hospitality and retail projects worldwide in cooperation with renowned architecture and design studios.

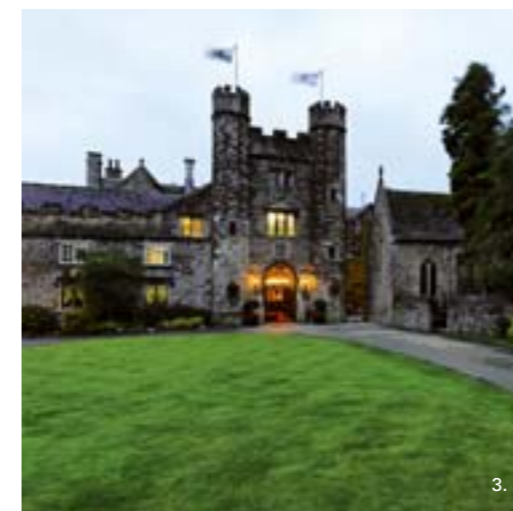


1.

1. Bulgari Hotel, London
2. Kempinski Grand Hôtel des Bains, St. Moritz
3. Marriott Hotels&Resorts, England
4. Radisson Hotel, Frankfurt
5. Palazzo Loredan, Venice



2.



3.



4.



5.



1. Hearst Tower, New York
2. New York Times building, New York
3. Vodafone stores, Italy
4. CheBanca! Furnishing for bank branches, Italy
5. ArcelorMittal Discovery Gallery, Luxembourg



## Projects

2016 —

Battersea Power Station, London  
2300 wardrobes, walk-in wardrobes

The Chilterns, London  
45 luxury apartments  
complete furnishing

2015 —

Beverly West Residence, Los Angeles  
35 apartments  
70 wardrobes  
70 walk-in wardrobes

City life, Milan  
100 apartments  
200 wardrobes

Holland Green  
52 apartments  
40 walk-in wardrobes  
110 wardrobes

Kempinski, St. Moritz  
30 apartments

King's Cross  
92 apartments  
166 wardrobes

Le Nouvel@KLCC, Kuala Lumpur  
197 apartments  
258 wardrobes

Newton, Singapore  
57 apartments  
280 wardrobes

One Park, Shanghai  
325 apartments  
1480 wardrobes

Quatermile, Edinburgh  
200 apartments  
426 wardrobes  
415 bathrooms  
200 kitchens

St Regis, Kuala Lumpur  
200 apartments  
330 wardrobes

2014 —

Bocconi University, Milan  
200 student apartments

Cheyne Terrace, London  
80 apartments  
105 wardrobes  
30 media wall cabinets  
181 vanity cabinets

Fulham Reach, London  
36 apartments  
310 wardrobes

Myc, Toronto  
76 apartments  
76 walk-in wardrobes  
Lema collections

Panchshill, Pune  
9 apartments

Porto Paphos, Paphos  
24 apartments  
48 wardrobes  
24 walk-in wardrobes

The Florian, Toronto  
32 apartments  
90 wardrobes and bookcases  
Lema collections

2013 —

Amber, Singapore  
40 apartments  
120 wardrobes

Chelsea Creek A&B  
250 wardrobes

Chelsea Creek C&D  
11 apartments  
31 wardrobes

Luma, Singapore  
72 apartments  
139 wardrobes

Olympic Residence, Limassol  
102 apartments  
350 wardrobes and bookcases

Park House, London  
58 wardrobes

2012 —

Rixos Bomonti, Istanbul  
244 apartments  
490 wardrobes

2011 —

Iresidences, Singapore  
70 apartments  
172 wardrobes

Lucida, Singapore  
62 apartments  
151 wardrobes

Neo Bankside, London  
220 apartments  
450 wardrobes

Nova Moreiras, Lisbon  
32 apartments  
101 wardrobes

Óscar Monteiro Torres, Lisbon  
11 apartments  
34 wardrobes

R. Garrett - Traccia Door, Lisbon  
7 apartments  
37 wardrobes

Seputeh Gardens, Kuala Lumpur  
209 wardrobes

Velazquez 160, Madrid  
11 apartments  
50 wardrobes  
5 walk-in closets

Verdana Villas, Singapore  
54 villas  
156 wardrobes

Waverly Project, Sidney  
114 wardrobes

2010 —

Avenidas Residence, Lisbon  
16 apartments  
49 wardrobes

Berna 56, Lisbon  
21 apartments  
124 wardrobes

Espada, Singapore  
232 apartments  
325 wardrobes

New Orleans, Rotterdam  
50 apartments  
128 wardrobes  
14 walk-in wardrobes  
48 writing desks  
14 beds  
50 cupboards  
128 bedside tables  
28 tv-units

Quinta da Francelha, Lisbon  
64 apartments  
350 wardrobes

Sephut Gardens, Kuala Lumpur  
41 apartments  
130 wardrobes

Waverley, Sidney  
49 apartments  
113 wardrobes

2009 —

Ed. Garage, Leiria  
6 apartments  
24 wardrobes

R. da Emenda, Lisbon  
13 apartments  
62 wardrobes

Villa Urbana, Ljubljana  
14 apartments  
wardrobes, walk-in wardrobes

2008 —

Guimeraes, Lisbon  
70 apartments  
210 wardrobes

2007 —

Luna Mar, Lisbon  
38 apartments  
102 wardrobes

2006 —

Alto do Parque, Lisbon  
90 apartments  
271 wardrobes



**Art direction, design**

Graph.X

**Photo**

Santi Caleca

Beppe Raso

Marco Reggi

**Pre press, Retouching**

A. De Pedrini

**Print**

Ogm Spa 2016

**Lema s.p.a.**

22040 Alzate Brianza

Como - Italy

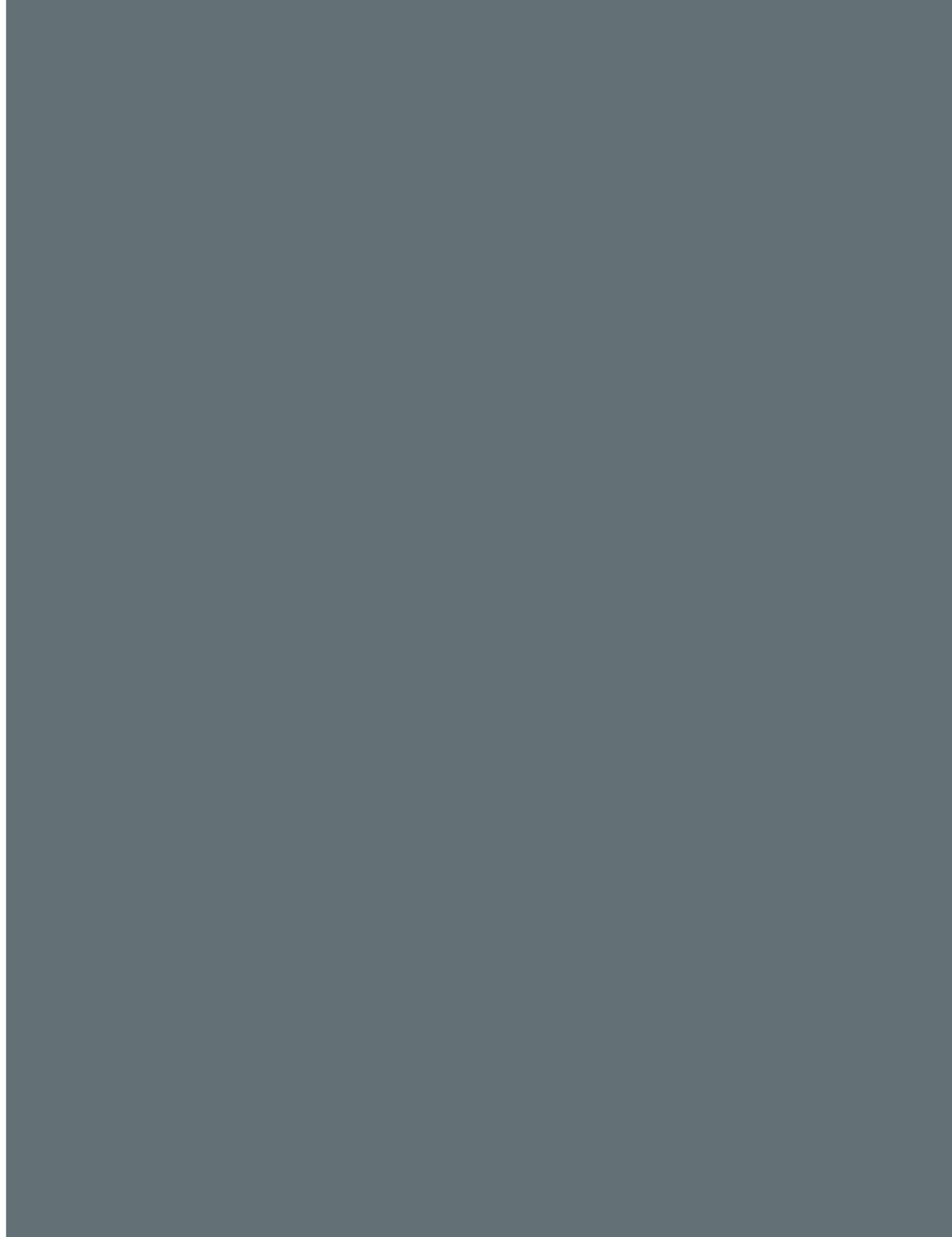
Strada Statale

Briantea n°2

t +39.031.630.990

f +39.031.632.492

lemamobili.com



**LEMA s.p.a.**

22040 Alzate Brianza  
Como – Italy  
Strada Statale  
Briantea n° 2  
t +39 031 630 990  
f +39 031 632 492  
[lemamobili.com](http://lemamobili.com)