

NEWS_2024



Italian excellence between innovation
and tradition, today even more cosmopolitan

R&D



Salone del Mobile Milano

62^{ma} edizione

16_21 aprile 2024

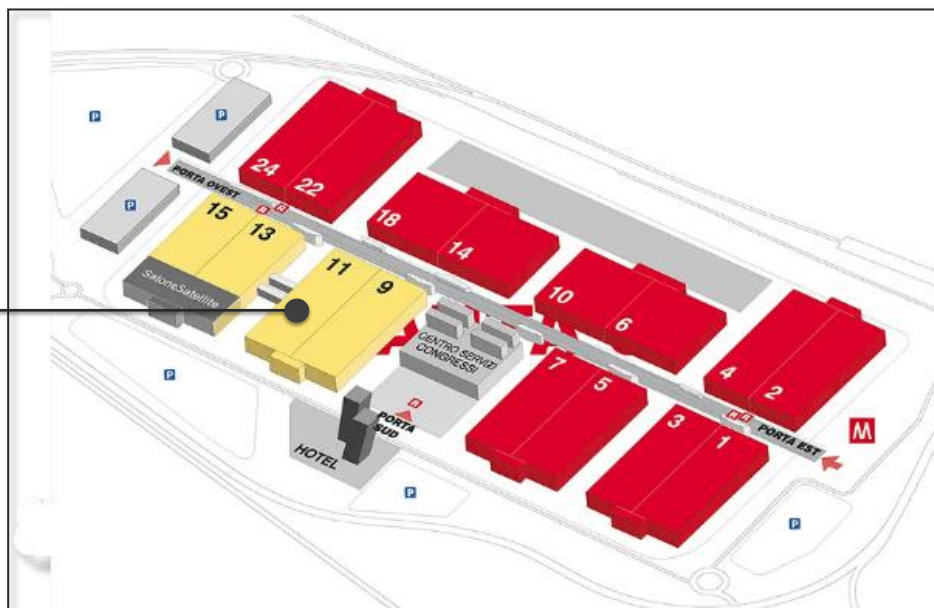
R&D



Salone
del Mobile
Milano

LEIMA

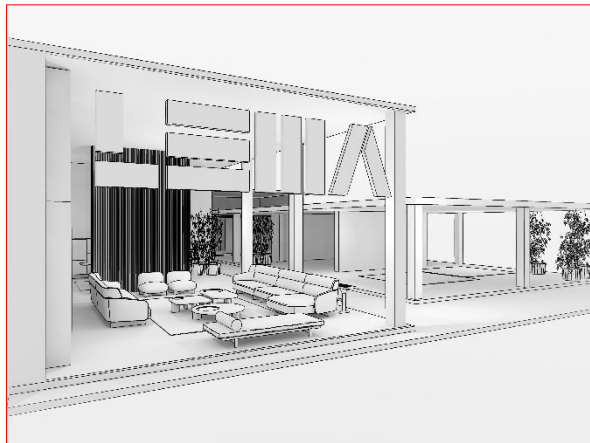
PADIGLIONE 11 - B15_C20



R&D



Salone
del Mobile
Milano

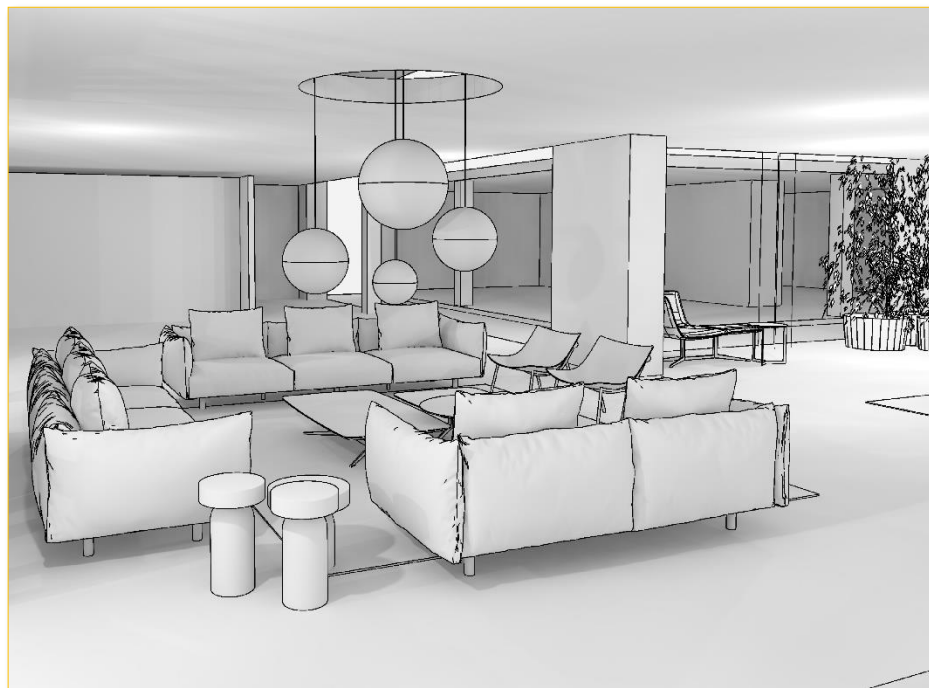


CASA_A

R&D



Salone
del Mobile
Milano



CASA_B

R&D



Salone
del Mobile
Milano

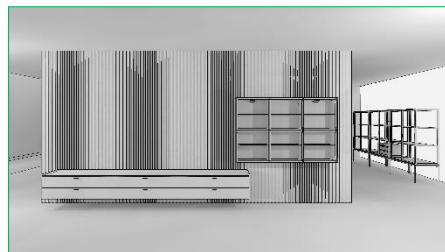
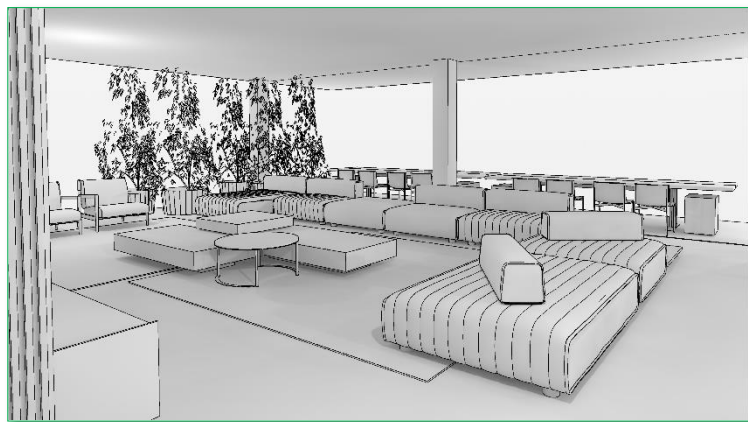
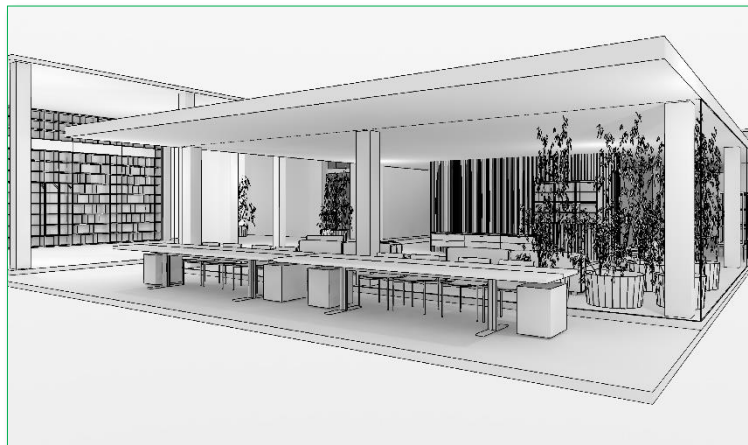


CASA_C

R&D



Salone
del Mobile
Milano



CASA_D

NEWS_2024

preview_anteprema

The images reproduced below are taken from prototypes, pre-catalogue photos, design renderings

Some details in the series may be subject to change



#sintesys

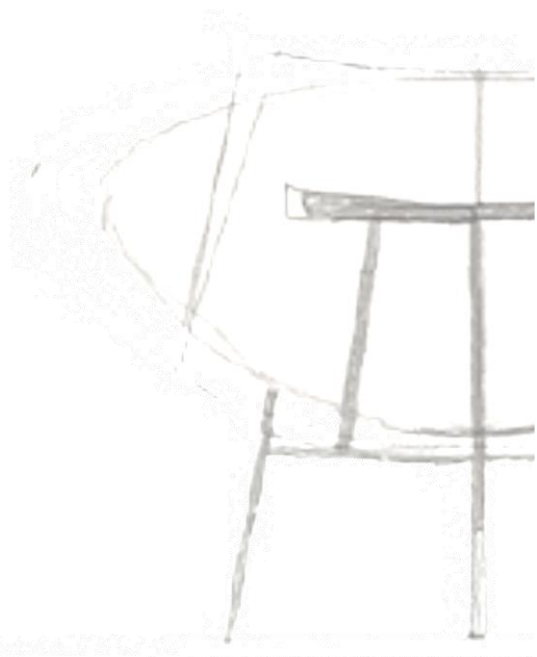
collection:	01 lounge chair	omega
	02 table	jiku
	03 chair	ayon
	04 armchair	ayon
	05 armchair	blanca
	06 table	august
	07 coffeee table	orion
	08 sofa	ares
	09 lounge chair	hasu
	10 lounge chair	miki

armadio al cm:	11 door “domo”
	12 door “eclisse”
	13 open compartment and TV compartment
	14 light drawer
	15 external finishing side 700_900
	16 double depth external finishing side
	17 text handle on overlapped wardrobe
	18 pull-out tray
	19 pull-out shelf
	20 details
	21 covering DLR_2025

collezioni

01. OMEGA

federica biasi



01. OMEGA

federica biasi



NEWS_2024

01. OMEGA

federica biasi

L 780 P 670 H 700 (Hs. 400)

Features:

- Metal Structure:
 - Metal frame M200
 - LCT Avio 476
 - LCT Curry 922
 - LCT Bruciato 477
- Seat/ Backrest upholstery:
 - leather_ synthetic leather (NON SFODERABILE)
- Backrest cross-piece in solid ash stained heat-treated oak



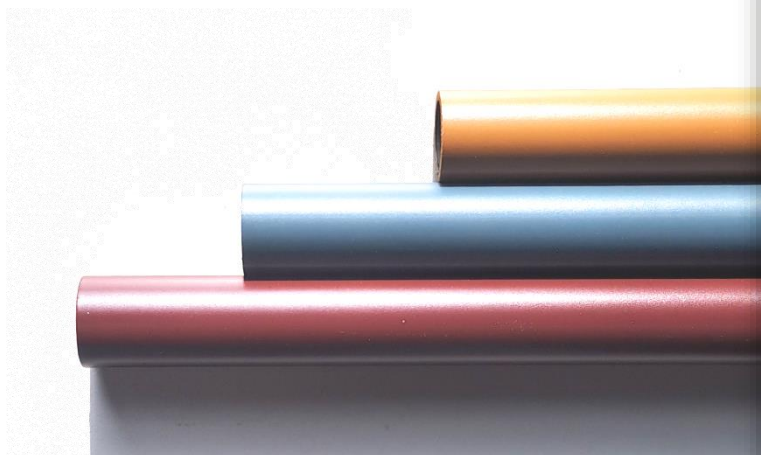
01. OMEGA

federica biasi

LCT Avio 476

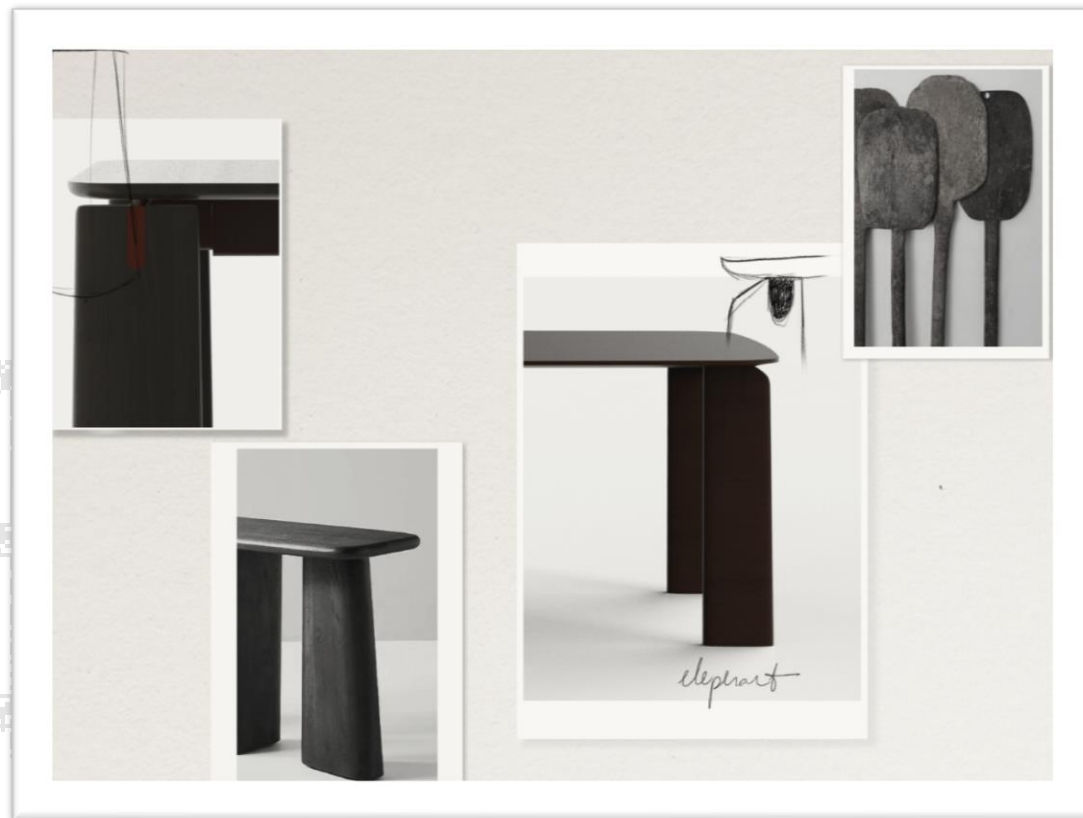
LCT Curry 922

LCT Bruciato 477



02. JIKU

federica biasi



02. JIKU

federica biasi

L 2000 P 1000	H 730 - rectangular
L 2400 P 1000	H 730 - rectangular
L 3000 P 1000	H 730 - rectangular
L 2000 P 1050	H 730 - oval
L 2400 P 1050	H 730 - oval
L 3000 P 1050	H 730 - oval

Base:

- Legs Ash stained heat-treated oak
- Frame Bronze painted metal M420

Top:

- Various finishing
 - Wood heat-treated oak
 - Porcelan stoneware (H table mm 720)
 - Clay
 - Reconstructed marble
 - Marble and Stone glossy and matt



THIS TYPE OF TABLE IS **NOT** MODIFIABLE DIMENSIONALLY IN A RETAIL SALES CONTEXT. RETAIL THE SUPPORTING STRUCTURE DOES NOT ALLOW IT FROM A TECHNICAL POINT OF VIEW.

NEWS_2024

02. JIKU

federica biasi



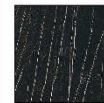
NEWS_2024

PIANI ESSENZA (RETTANGOLARI_OVALI)



RÖVERE
TERMOTRATTATO

PIANI GRES PORCELLANATO (TUTTE LE DIMENSIONI & TIPOLOGIA)



LAIRENI GLOSSY



CALACATTA GOLD
GLOSSY A

PIANI ARGILLA (TUTTE LE DIMENSIONI & TIPOLOGIA)



CRETA G101



ARDESIA G116



POLVERE G111



SABBIA G106



FECE G126

PIANI MARMO RICOSTRUITO (TUTTE LE DIMENSIONI & TIPOLOGIA)



BLU
LAPISLAZZULI



VERDE
MALACHITE



NERO
BELGIANBUE



BIANCO
CANDOGLIA

PIANI MARMO (FINITURA LUCIDA E OPACA, TUTTE LE DIMENSIONI & TIPOLOGIA)



BIANCO
CARRARA



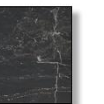
NERO
MARQUINIA



PIETRA
GREY NO LUCIDO



BIANCO
CELADON



NERO
PORFIDO IMPERIALE



CALACATTA
VAGLI ORO



VERDE
ALPI



ROSSO
CIPOLLINO



ROSSO
LEPANTO



BIANCO
SUPERWHITE

02. JIKU

federica biasi



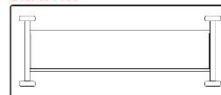
3000 x 1000



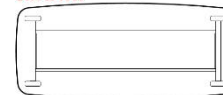
3000 x 1050



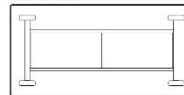
2400 x 1000



2400 x 1050



2000 x 1000



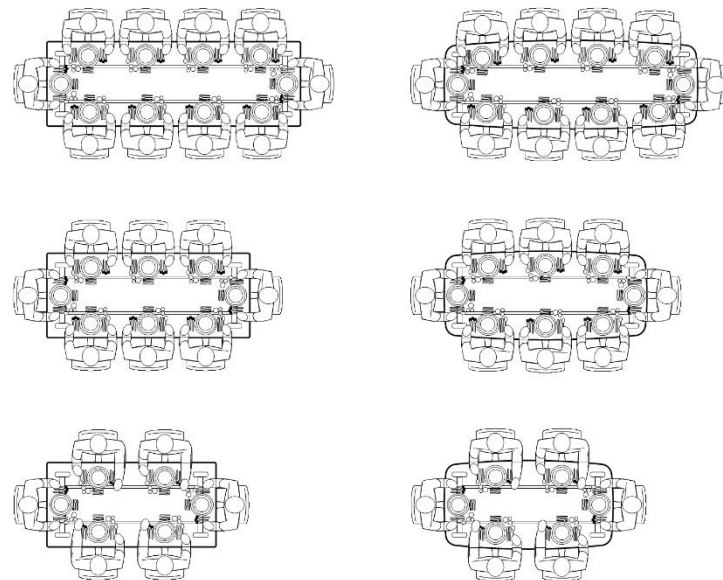
2000 x 1050



NEWS_2024

02. JIKU

federica biasi



NEWS_2024

03.04.AYON

gabriele & oscar buratti

CHAIR

L 550 P 540 H 800 (Hs. 470)

ARMCHAIR

L 580 P 540 H 800 (Hs. 470) – H arm 655

Features:

- Solid ash wood structure stained in heat-treated oak
- Seat / backrest / arm / light hide
 - C28 IVORY
 - C29 DOVE
 - C26 NATURAL AGED CUIR
 - C03 GREY
 - C19 COFFEE
 - C02 BLACK



03.04.AYON

gabriele & oscar buratti



03.04.AYON

gabriele & oscar buratti



05. BLANCA

roberto lazzeroni

ARMCHAIR

L 620 P 560 H 800 (Hs. 475) – H arm 685

Features:

- Product obtained entirely by moulding in polyurethane with differentiated densities
- Cover: fabric_leather_synthetic leather
- **REMOVABLE COVER ONLY SEAT**



NEWS_2024

06. AUGUST

roberto lazzeroni



NEWS_2024

06. AUGUST

roberto lazzeroni

Dimension:

L 2000 P 1000

L 2400 P 1000

L 3000 P 1000

H 730 - rectangular

H 730 – rectangular

H 730 – rectangular

L 2000 P 1050

L 2400 P 1050

L 3000 P 1050

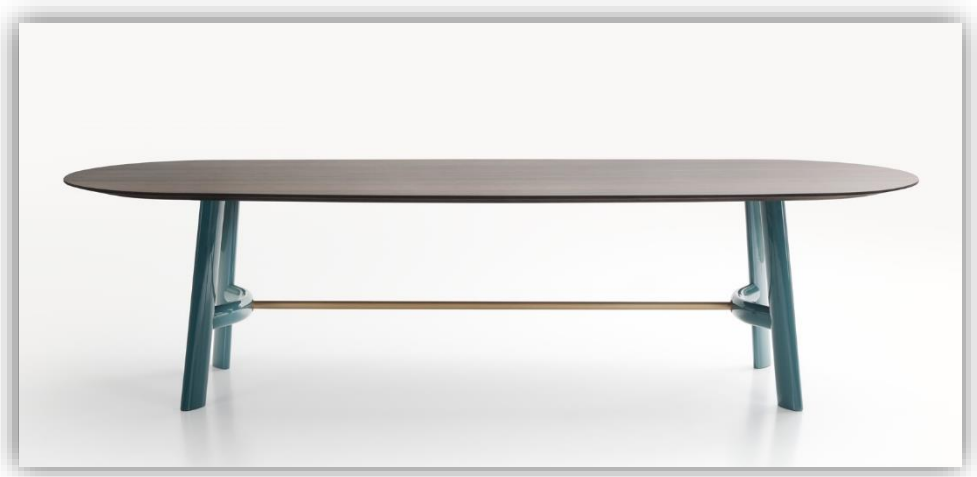
H 730 - oval

H 730 – oval

H 730 – oval

L 2900 P 1150

H 730 – ovaloid



THIS TYPE OF TABLE IS **NOT**
MODIFIABLE DIMENSIONALLY IN A RETAIL
SALES CONTEXT. RETAIL THE SUPPORTING
STRUCTURE DOES NOT ALLOW IT FROM A
TECHNICAL POINT OF VIEW.

NEWS_2024

06. AUGUST

roberto lazzeroni

Finishing

Base:

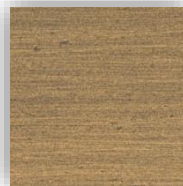
- Solid wood in LCL glossy **lacquered**
- Solid ash stained oak heat-treated
- Metal centre bar, patinated bronze M422

Top_rectangular / oval:

- oak heat-treated
- Porcelain stoneware (H table mm 720)
- Clay
- Reconstructed marble
- Marble and stone glossy and matt

Top_ovaloid:

- Marble and stone glossy and matt



bronzo patinato
M422

PIANI ESSENZA (RETTANGOLARI_OVALI)



ROVERE
TERMOTRATTATO

PIANI GRES PORCELLANATO (TUTTE LE DIMENSIONI & TIPOLOGIA)



LAIRENI GLOSSY



CALACATTA GOLD
GLOSSY A

PIANI ARGILLA (TUTTE LE DIMENSIONI & TIPOLOGIA)



CRETA G101



ARDESIA G116



POLVERE G111



SABBIA G106



FECE G126

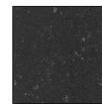
PIANI MARMO RICOSTRUITO (TUTTE LE DIMENSIONI & TIPOLOGIA)



BLU
LAPISLAZZULI



VERDE
MALACHITE



NERO
BELGIANBUE



BIANCO
CANDOGLIA

PIANI MARMO (FINITURA LUCIDA E OPACA, TUTTE LE DIMENSIONI & TIPOLOGIA)



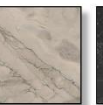
BIANCO
CARRARA



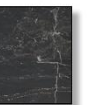
NERO
MARQUINIA



PIETRA
GREY NO LUCIDO



BIANCO
CELADON



NERO
PORTORO IMPERIALE



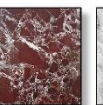
CALACATTA
VAGLI ORO



VERDE
ALPI



ROSSO
CIPOLLINO



ROSSO
LEPANTO



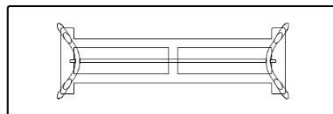
BIANCO
SUPERWHITE

06. AUGUST

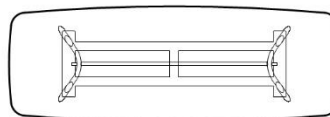
roberto lazzeroni



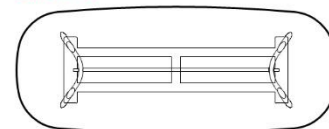
3000 x 1000



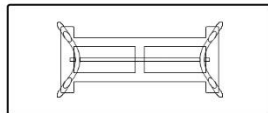
3000 x 1050



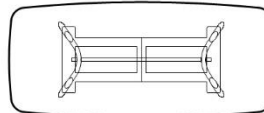
2900 x 1150



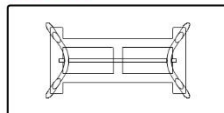
2400 x 1000



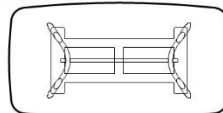
2400 x 1050



2000 x 1000



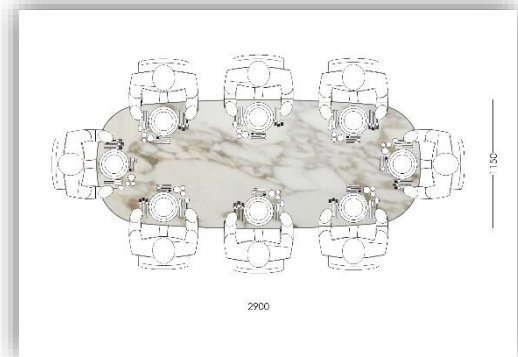
2000 x 1050



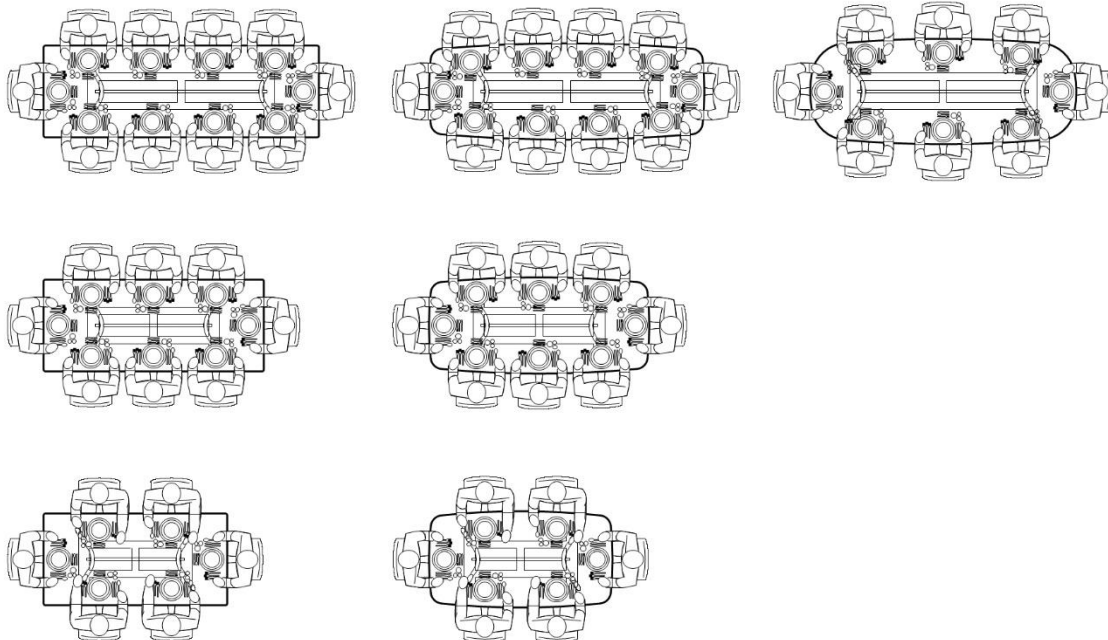
NEWS_2024

06. AUGUST

roberto lazzeroni



new solution ovaloid



NEWS_2024

07. ORION

roberto lazzeroni

L 1500 P 700 H 370 – oval
L 900 P 900 H 310 – square
Ø 1200 H 240 – round

Finishing base_top:

- LCT
- LCL

Tray **OPTIONAL:**

- Fixed Tray in metal finishing:
 - Bronze M420
 - LCT



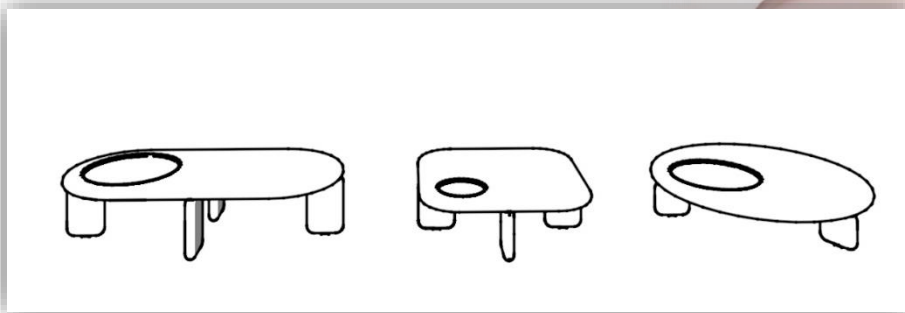
07. ORION

roberto lazzeroni

The tray (not removable) is **OPTIONAL**

Dim. For coffee tables **round and oval** Ø 495 depth 13

Dim. For **square coffee** tables Ø 245 depth 13



NEWS_2024

08. ARES

roberto lazzeroni



NEWS_2024

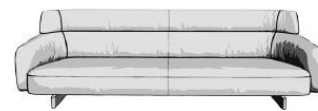
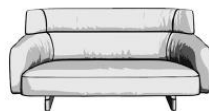
08. ARES

roberto lazzeroni



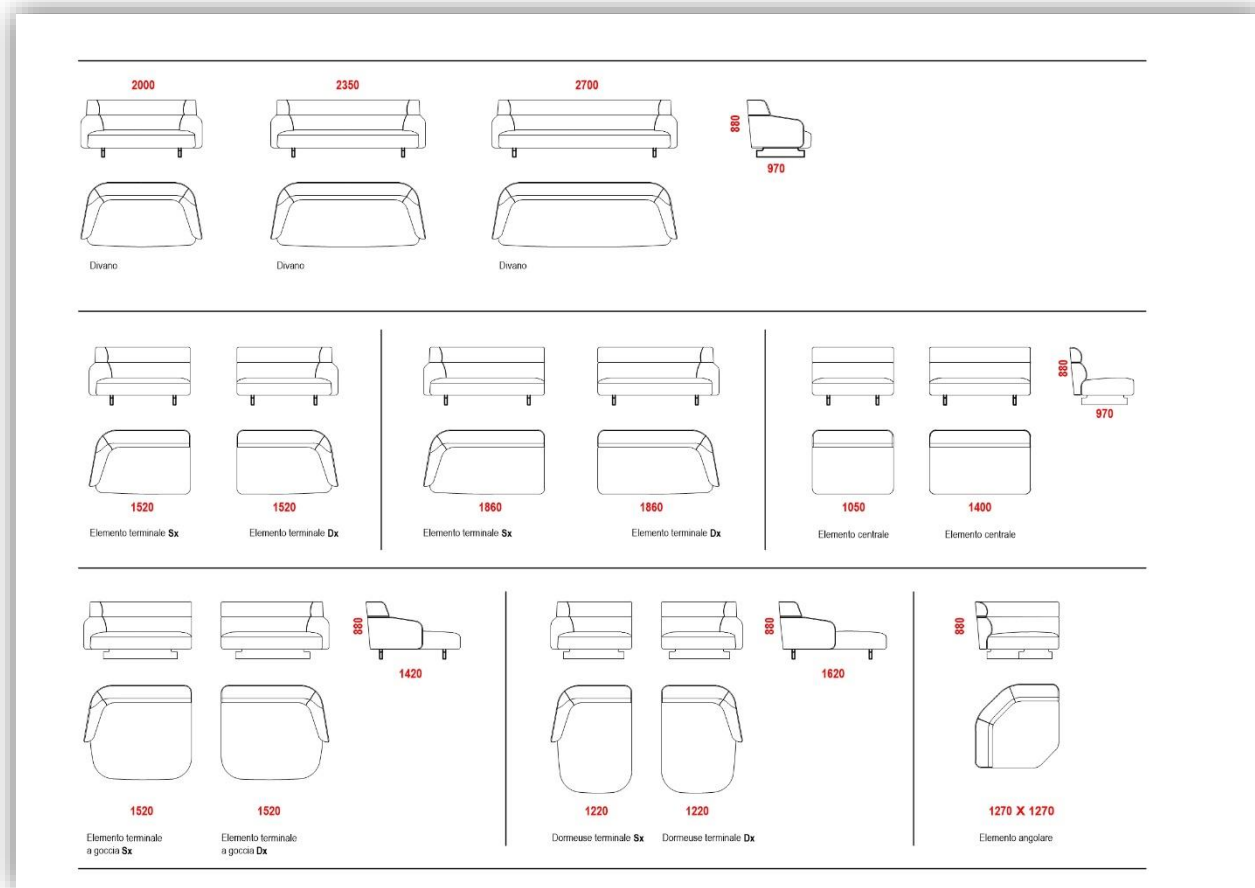
08. ARES

roberto lazzeroni



08. ARES

roberto lazzeroni

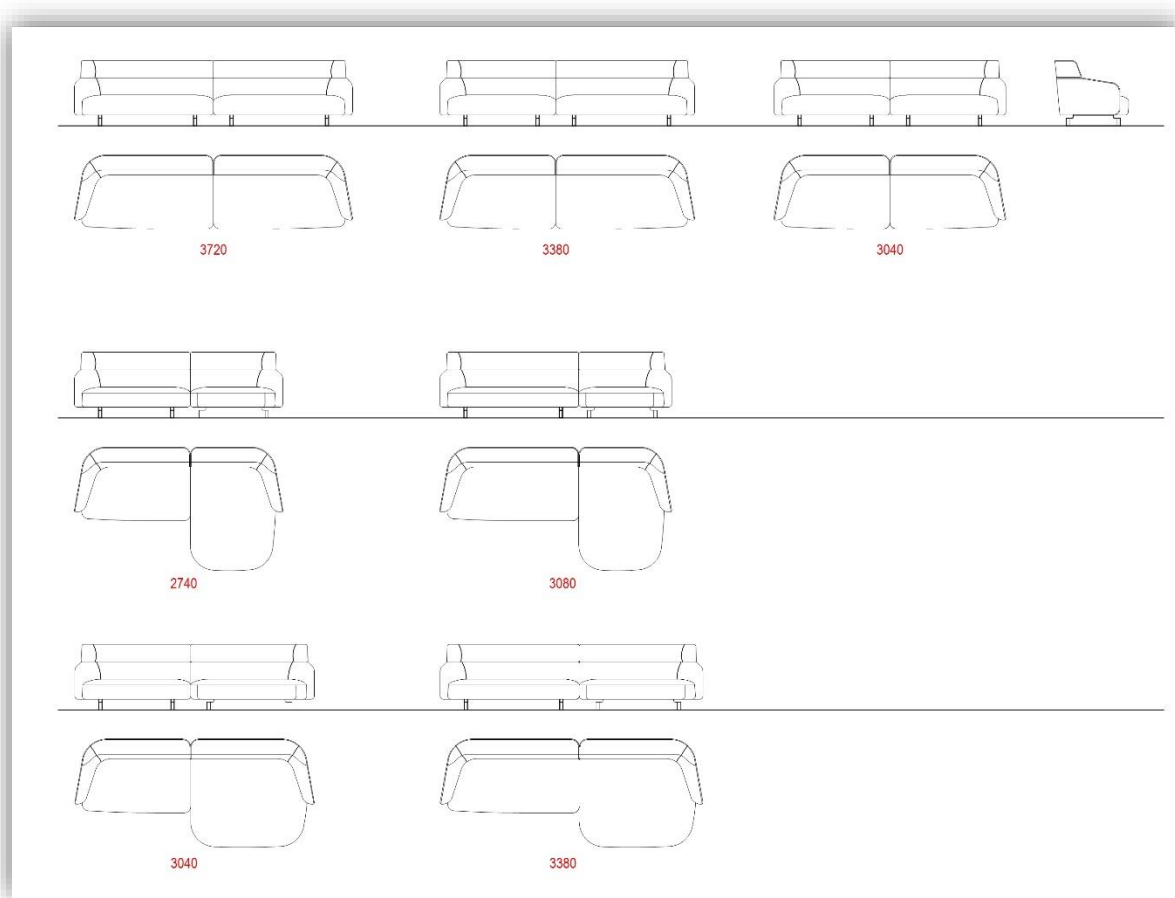


Official dimensions are being defined according to price list

NEWS_2024

08. ARES

roberto lazzeroni

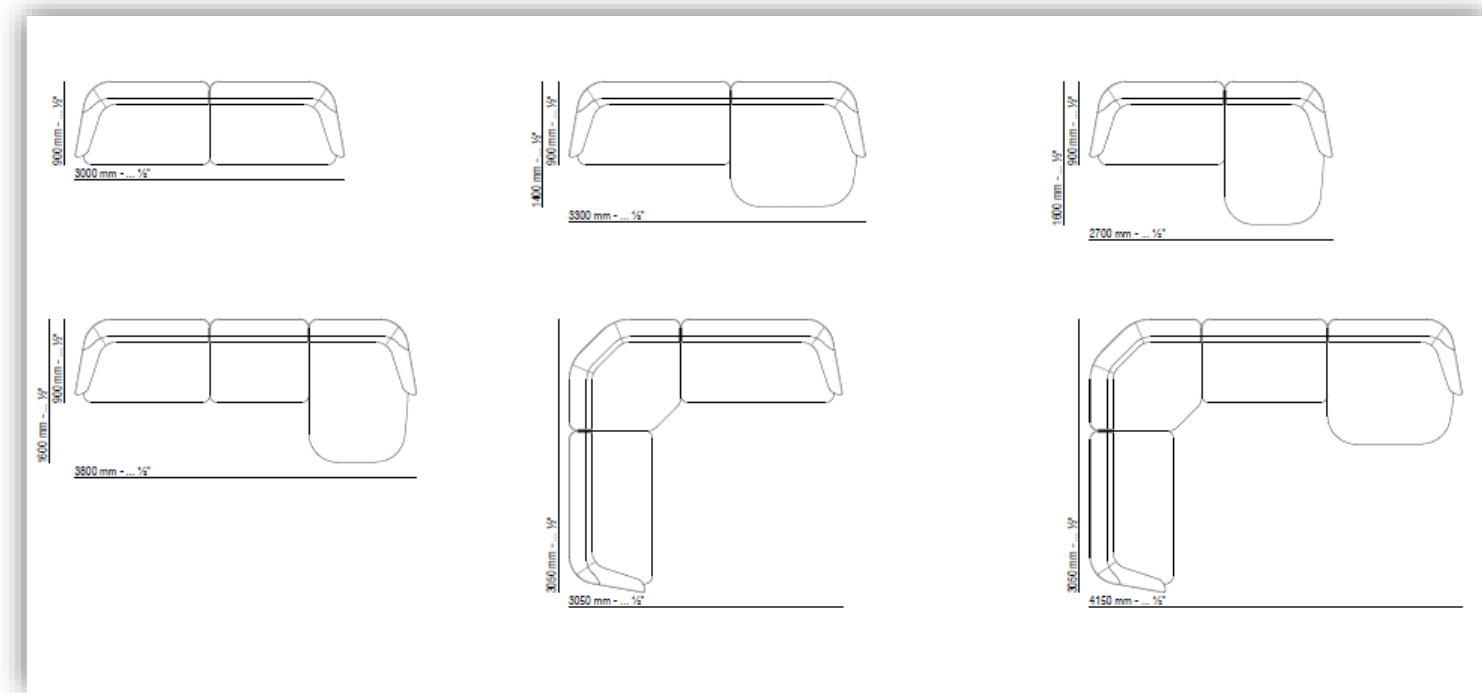


Official dimensions are being defined according to price list

NEWS_2024

08. ARES

roberto lazzeroni



09. HASU

ludovica+roberto palomba

LOUNGE CHAIR

L 820 P 900 H 650 (Hs. 410)

Features:

- Base in solid ash wood stained heat-treated oak
- Upholstery: fabric
- **REMOVABLE**



NEWS_2024

10. MIKI

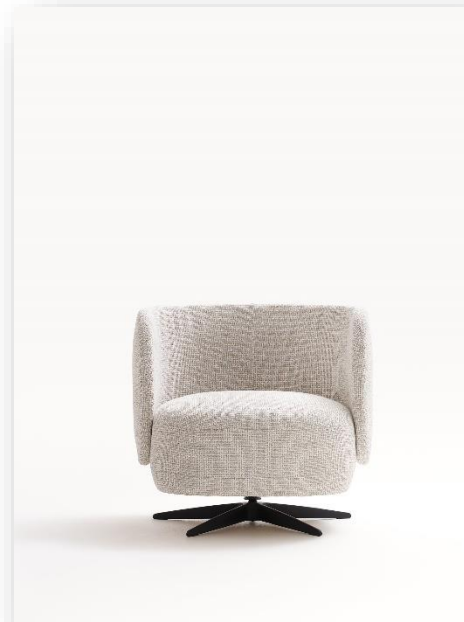
pierattelli achitture

SWIVEL ARMCHAIR

L 770 P 690 H 750 (Hs. 400)

Features:

- Upholstery:
 - fabric_leather_synthetic leather
- Sit and backrest_arm can be in **different upholstery finishing between them.**
- REMOVABLE in fabric (NOT REMOVABLE IN LEATHER)
- 5-spoke cast aluminium swivel base:
 - Finishing lackered black M440 (RAL 9005)
 - Rotation 360°



MARBLES & STONE

Summary of the marbles in collection

MARBLES & STONE

officina**design**lema

Overview of all marbles (GLOSSY_MATT) currently in the collection for dining tables and from OCTOBER 2023 also available in the optional finish **ABSOLUTE SHIELD®**.



CIPOLLINO ROSSO



ROSSO LEPANTO



SUPERWHITE



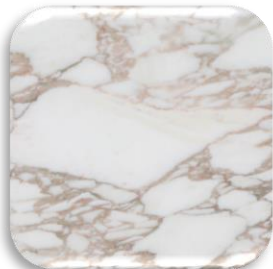
VERDE ALPI



BIANCO CARRARA



BIANCO CELADON



CALACATTA VAGLI ORO



PIETRA GREY **OPACO**



NERO PORTORO IMP.



NERO MARQUINIA

MARBLES & STONE

officina **design** lema

SHIELD® slows down the penetration of liquids but does **NOT** protect against acidic substances. Corrosive activity due to the very acidic pH of certain liquids such as citric acid found in citrus fruits, coffee or vinegar, **EXPOSE THE MARBLE TO THE FORMATION OF OPAQUE STAINS OR SURFACE DEGRADATION WITHIN MINUTES OF CONTACT.**

For this and other reasons, it becomes necessary to intervene by cleaning 'fresh spots'.

Water that tends to be rich in calcium and magnesium salts (hardnessF°) can also create sedimentation.

ABSOLUTE SHIELD® increases its protective action towards the surface, greatly improving the degree of impermeability, water repellency and resistance to oily substances.

Its application takes place thanks to a special technology that evenly distributes the product over the surfaces of the finished surface, whether glossy or matt. Any workmanship on the top will therefore be protected to further safeguard its daily use.



MARBLES & STONE

officina **design** lema

The **STONE PECE**_LT40 and coffetable.

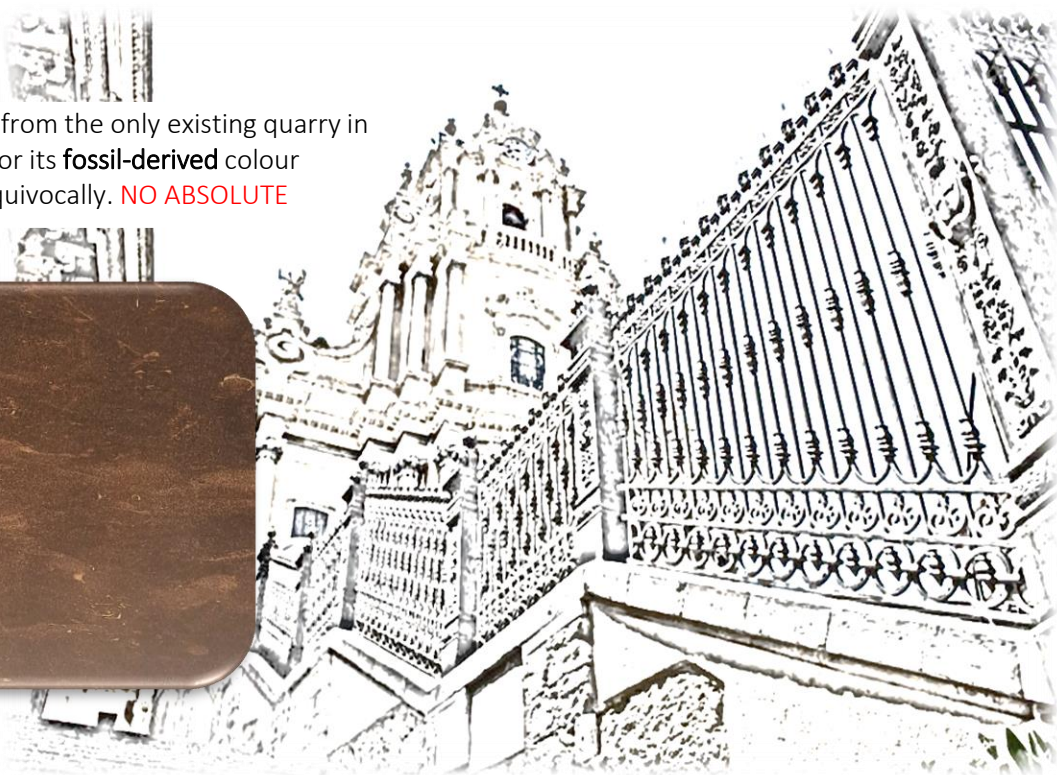
A **soft matt polish** for an **ancient stone** extracted from the only existing quarry in **Ragusa**, (Tabuna Descat). A calcarenite unique for its **fossil-derived** colour modulations that enhance and distinguish it unequivocally. **NO ABSOLUTE SHIELD®**.



BIANCO PECE



NERO PECE



armadio al cm

11.DOMO_wardrobe

piero lissoni

Hinged frame DOOR Th.30

- **Dimensions th.30:**
 - L. 454_500_592
 - H. 2334_2430_2590_2846
- **Finishing :**
 - Heat-treated oak
 - Carbon oak
 - Open pore lacquered LCT
 - **Reducible in H and L**
 - **Corner possibility (No end column)**
 - standard hinge 94°_165° (w surcharge)



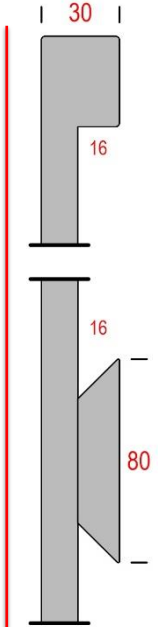
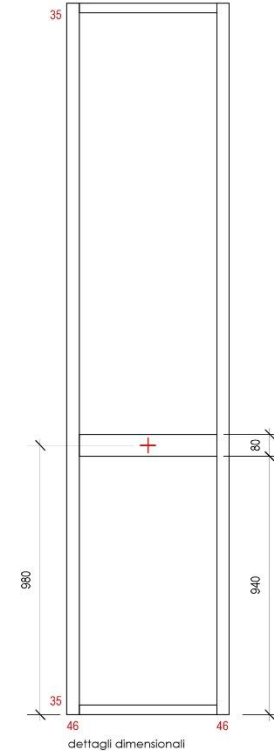
anta
rovere termotrattato



anta
rovere carbone



anta
LCT_poro aperto (verticale)



dett. sezione

11.DOMO_wardrobe

piero lissoni



NEWS_2024

12.ECLISSE_wardrobe

piero lissoni

DOOR flushed handle TH. 25

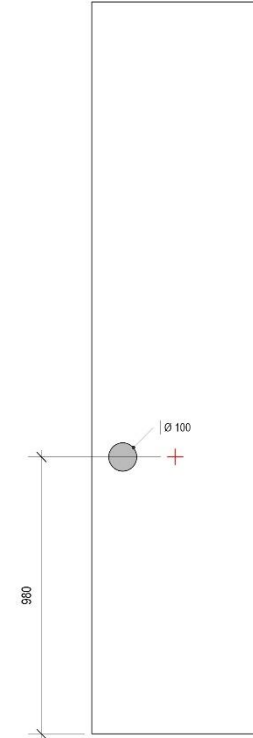
- Dimension hinged :
 - L. 454_500_592
 - H. 2334_2430_2590_2846
- Dimension sliding :
 - L. 750_932_1024_1208_1482
 - H. 2334_2430_2590_2846* (* L. 1482 NO 2846)
- Dimension coplanar :
 - L. 908_1000_1184_1458
 - H. 2334_2430_2590
- Finishing:
 - hinged_sliding_coplanar
 - LCT (finishing handle LCT)
 - LCL (excluded L.1482_1458)
 - Hinged: riducibile H e L_inclined cut
 - Sliding: riducibile H e L
 - Coplanar: riducibile H
 - Corner and end element available
 - Standard hinge 94°_165° (with surcharge)
 - On two doors module and corner, handle is only on the right door



anta
versione_LCL



anta
versione_LCT



dettagli dimensionali

NEWS_2024

12.ECLISSE_wardrobe

piero lissoni

Ø mm100



NEWS_2024

13.OPEN&TV COMPARTMENT_up grade

officina**design**lema

A new proposal from **Lema armadio al cm** to build a more up-to-date open compartment solution, with the possibility of inserting shelves or, in the 981 mm width, even a TV (max 40") possibly hanging from the sturdy back.

2 system widths **mm 478_981** and a new 25 mm perimeter frame, perfectly in line with the finishing side panels, define a design of continuity with the formal concept of the Armadio al cm. Possibility of inserting **LED lamp** under the opened part top. Lighting with remote control.

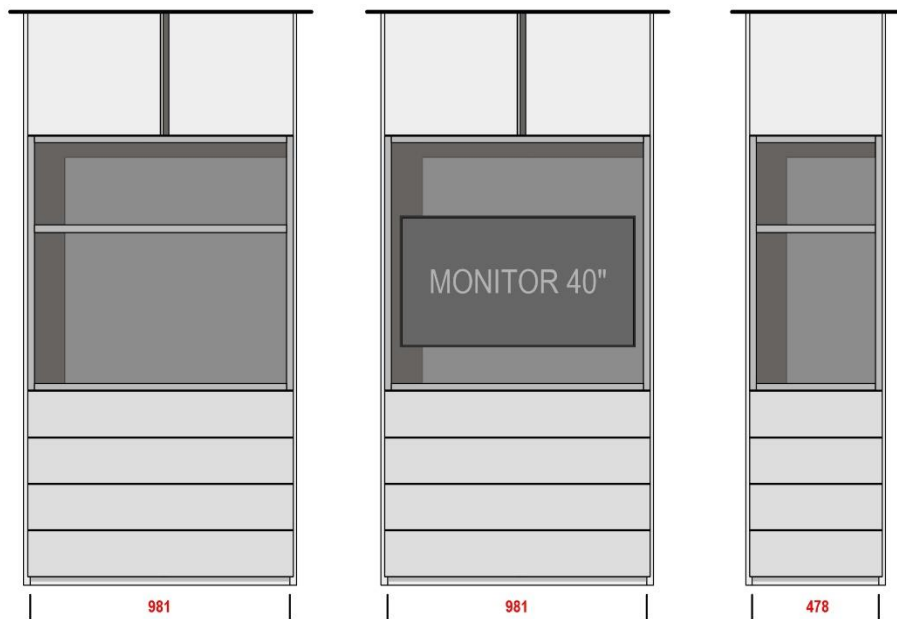
The lower part can also be equipped with a drawer front that is also available in **push-pull opening**. Reductions are possible as indicated in the price list.



NEWS_2024

13. OPEN&TV COMPARTMENT **_up** grade

officina**design**lema



NEWS_2024

14.LIGHT_DRAWER

officina**design**lema

Lema armadio al cm introduces a lighting system in the drawers.

The LED bar, located on both sides and in the length of the sides (mm 450), **switches on automatically when the drawer is opened**; it stays on for **about 30"** and then switches off in energy-saving mode.

Automatic switch-off even when closing. **Light Temperature 4000 K**

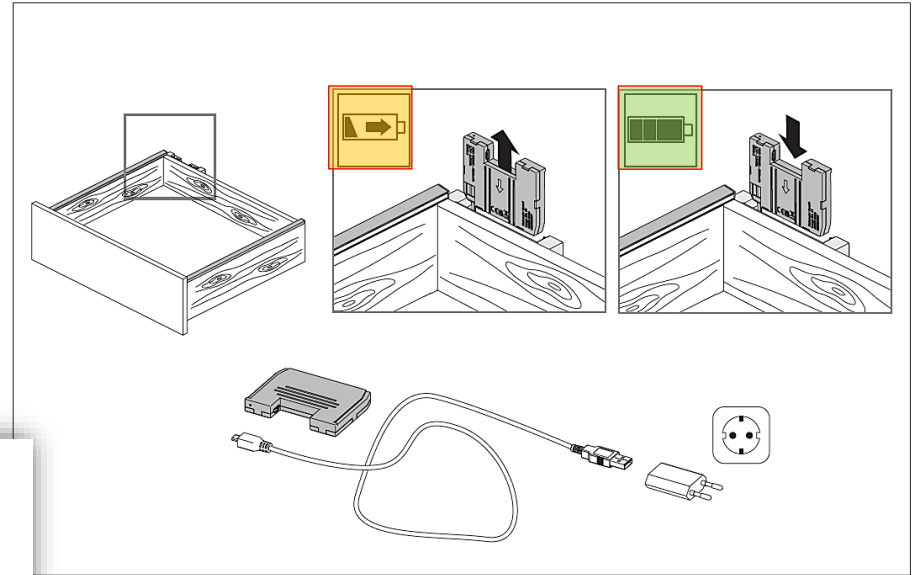
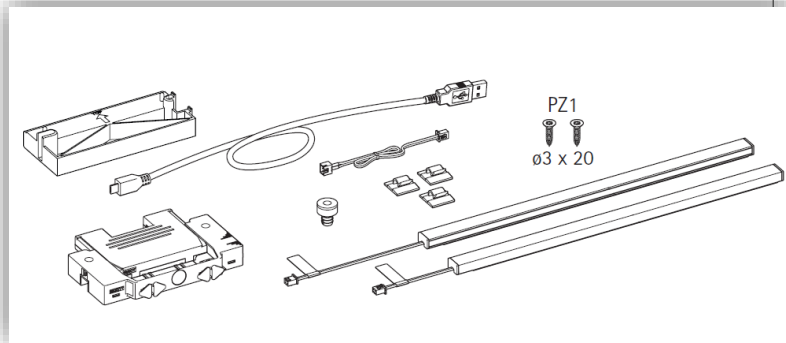
The cable-free system is powered by a lithium-ion battery rechargeable via micro USB-B (cable included)



14.LIGHT_DRAWER

officina**design**lema

KIT LAMPS AND BATTERY
pre_installed and working



The battery is installed in a special 'pocket' located behind the drawer bottom for easy battery extraction. **Charging time 100% - approx. 4 hours with 500mA battery charger (cable included micro USB-B).** **With an average of 10 openings per day, the battery charge lasts approximately 1 year.**

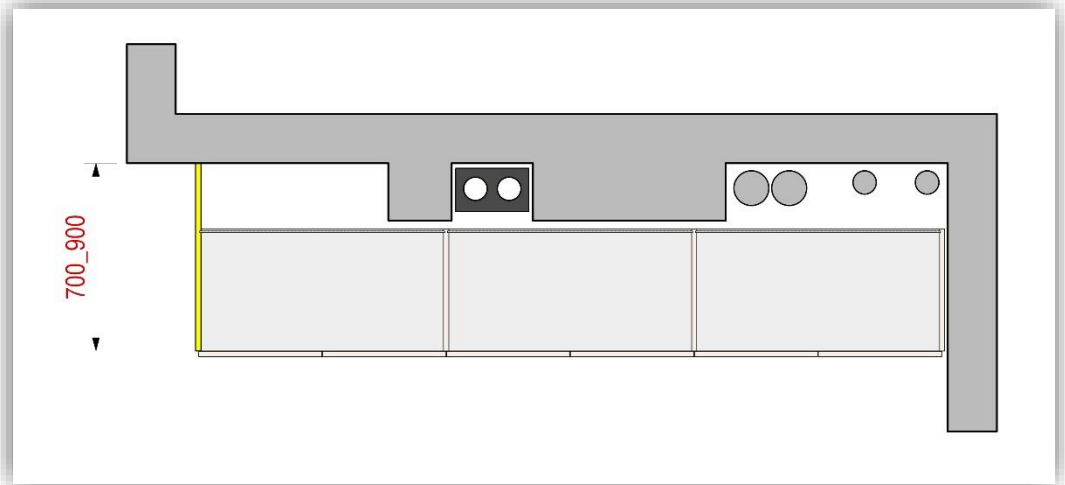
15. EXTERNAL FINISHING SIDE 700_900

officina**design**lema

Lema armadio al cm introduces a new typology of finishing side:

- depth mm **700** reducible
- Depth mm **900** reducible

These new types of external side panels make it possible to **compensate for 'construction site' situations** where major misalignments cannot be resolved with STANDARD side panels.



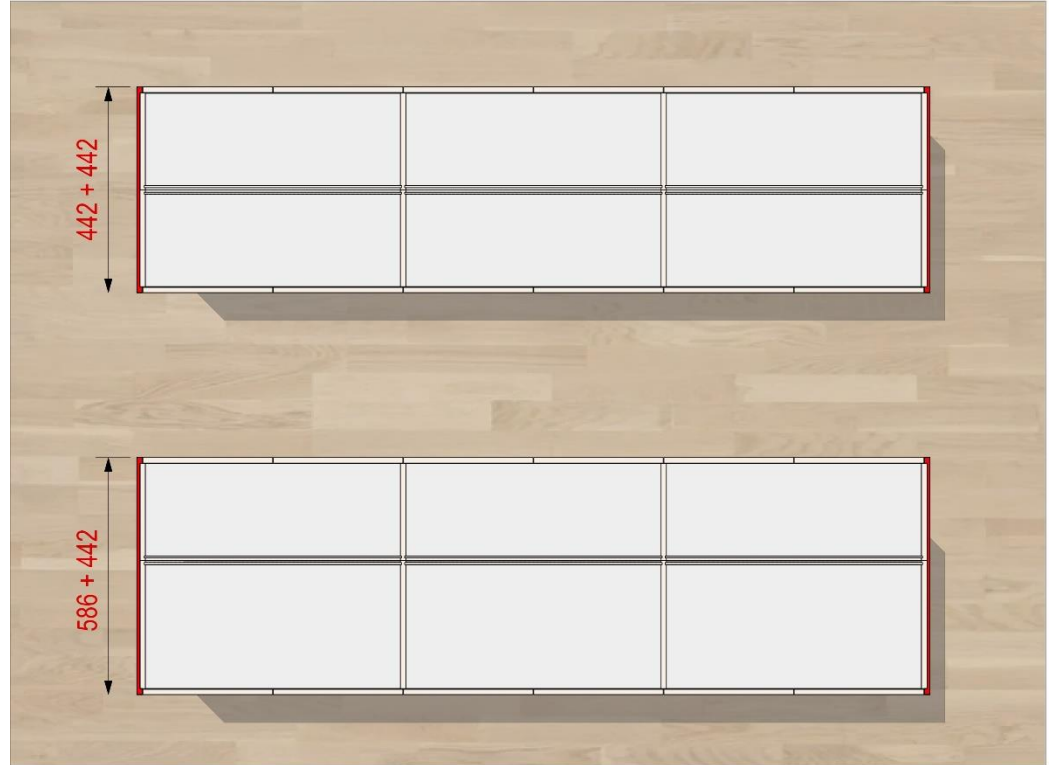
16.FINISHING SIDES IN DOUBLE DEPTH

officina**design**lema

Lema armadio al cm introduces **TWO** types of finish side panels capable of 'accommodating' the back-to-back coupling of two wardrobes in the usual free-standing condition:

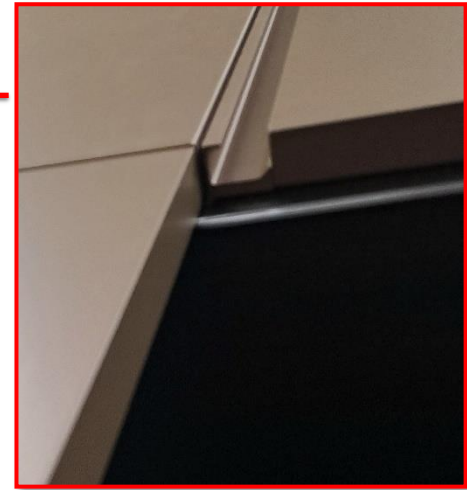
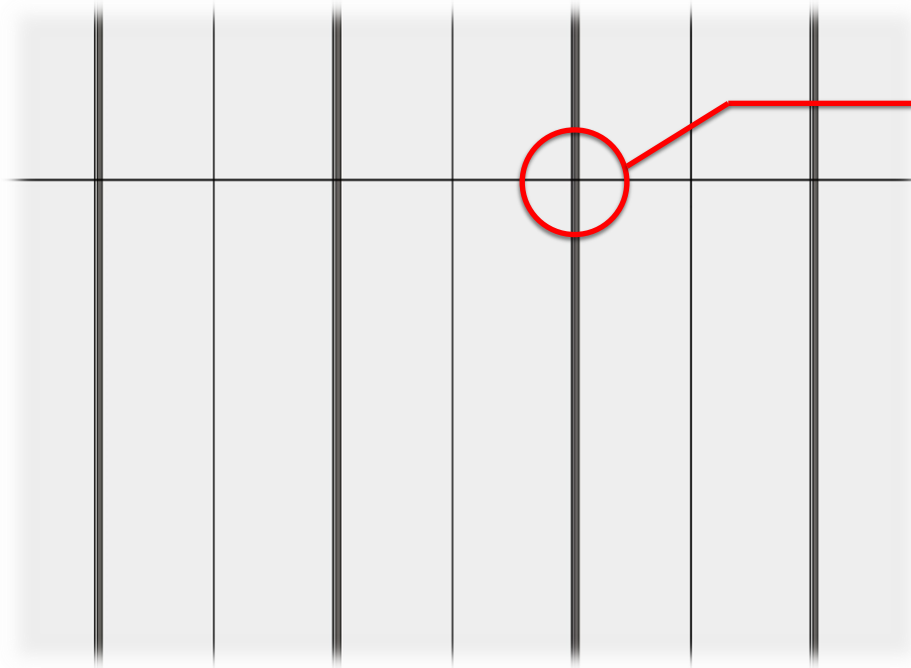
- FINISHING SIDE PANEL for depth mm **442 + 442**
- FINISHING SIDE PANEL for depth mm **442 + 586**

The **total depth of the finish sides** varies according to the thickness of the doors selected in the composition and will be defined automatically.



17.HANDLES TEXT ON OVERLAPPED WARDROBE

officina**design**lema



For the **Text Door** in the overlapped wardrobe solution, we introduce the solid metal extruded handle.

Solid metal extruded handle, also valid for solutions below 1800 mm in height.

18. EXTRACTABLE TRAY

officina**design**lema

Lema armadio al cm introduces in the internal equipment of the system, the extractable tray in all the widths :

432_478_570_707_889_981_1165.

It is a pull-out element on **PARTIAL** or **TOTAL** extraction rails according to the customer's choice.

Open at the front and with two side panels, it is always presented in the configuration with an alluminium front panel Version **Bronzo epox M421** or **Sand epox M455**.

«Wood» parts in the **melamine** of our system internal wardrobe (**NO STONE**).



NEWS_2024

19. EXTRACTABLE SHELF

officina**design**lema

Lema armadio al cm introduces as internal equipment of the system, the extractable shelf in all the widths:

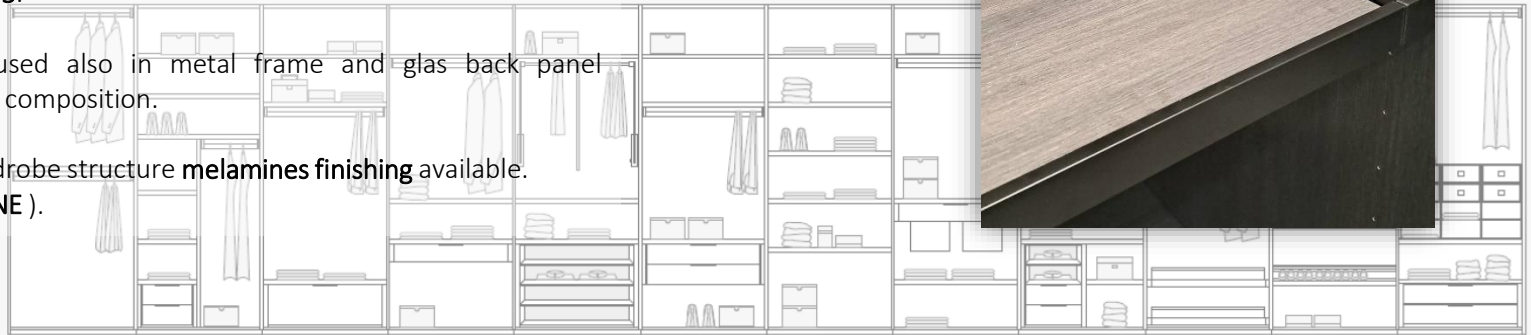
[432](#) [478](#) [570](#) [707](#) [889](#) [981](#) [1165](#).

This is a total extraction element (only possibility) similar to the extractable shoe rack in the price list.

Equipped with a profiled back, it always comes in the configuration with metal details **Bronze epox M421** or **Sand epox M455**.

Can be used also in metal frame and glas back panel wardrobe composition.

In all wardrobe structure **melamines finishing** available.
(NO STONE).



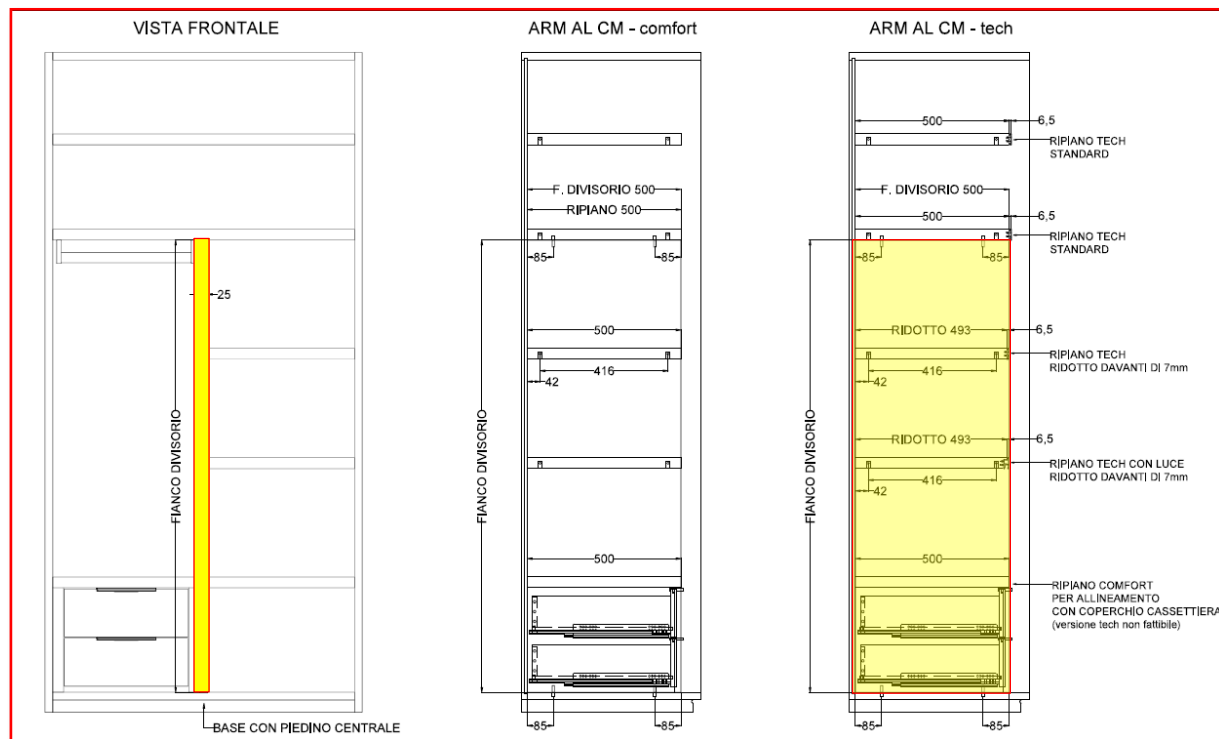
NEWS_2024

armadio al cm_details

20. PARTITION SIDE_upgrade

officina **design** lema

Partition side flush to TECH shelves.



NEWS_2024

20.HANGING BAR

officina**design**lema

Unification of round hanging bar for walk-in
VentiTre_Armadio



VentiTre_Armadio



removed

R&D
SUSTAINABILITY

Sustain sustainability



R&D

SUSTAINABILITY



R&D

SUSTAINABILITY

Concret numbers

84 trees

Saved with the supply for Salone del Mobile

2597 trees

saved in the production cycle Lema_Saviola 2023

LEMA

R&D

SUSTAINABILITY



«FRANCIS»

The polyurethane foam that makes up the usually lacquered or clay/cement product type consists of 14% bio mass (according to carbon 14 testing and derived from plant/animal and non petrochemical sources) and a 20% polyol formulation from recycled PET. Moulding is carried out with water-based release agents BH2O



«BLANCA»

Part of the polyurethane that makes up the chair is made of polyols with a renewable base of more than 70 %. Moulding is carried out with water-based release agents BH2O

R&D

SUSTAINABILITY



«SOFFIO» _ VERSION **ECO +**

Seat cushion:

bio-based carbon resorSA polyurethane (OEKO-TEX® ST 100)
MATTRESS WITH PADDING MICROFLOCK fibre from 70% PET
recycling.30% viscoelastic polyurethane chips (OEKO-TEX® ST
100) COVERED IN 100% COTTON CLOTH

back support cushioning :

MICROFLOCK PADDING 70% PET recycled fibre30% viscoelastic
polyurethane chips (OEKO-TEX® ST 100)COVERED IN 100%
COTTON CLOTH

arm/back cushioning:

PADDING MICROFLOCK fibre from 70% recycled PET.30%
viscoelastic polyur. chips (OEKO-TEX® ST 100) COVERED IN 100%
COTTON CLOTH

zip closure :

Nylon (the polyamide it is made of makes it recyclable)

supporting structure :

Multilayer wood FSC®

seat belts :

polypropylene composite

Supports:

Solid wood FSC®

feet :

Solid wood FSC® nylon slides

LEMA

armadio al cm progress 2025_cover DLR

21.DLR

officina**design**lema

Lema armadio al cm introduces the possibility to cover the **Finishing sides** and the **back panel in DLR**.

This new solution, in addition to the already DLR-covered doors, will result in a new configuration with a high aesthetic impact.

It will also be possible, on the inside, to have two types of finishing in MOKA or GRIS synthetic leather to create a pleasant and sophisticated continuity with all the jewelry accessories to configure.

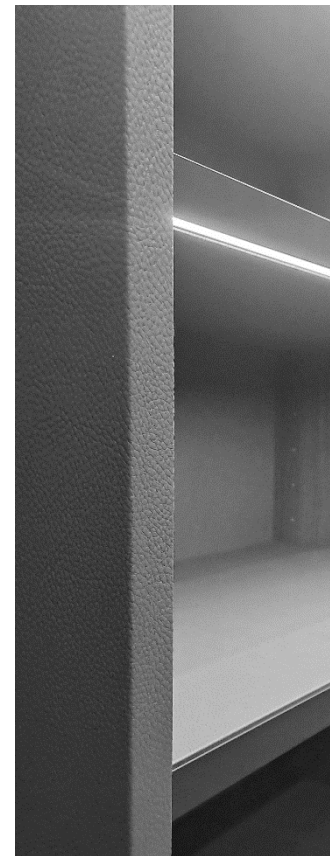
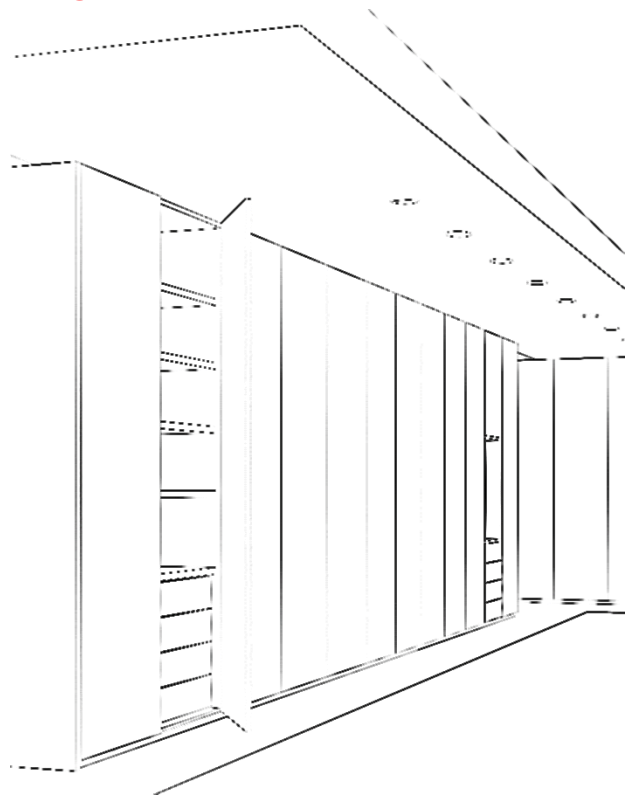
Inner equipment covered in synthetic leather **MOKA** o **GRIS**:

- Tech shelf
- Chest of drawer top tech version, like shelf
- Round/rectangular hanging bar



21.DLR

officina**design**lema



NEWS_2024

