

WORLD OF CONTRACT

FINISHES COLLECTION

Montbel
made in Italy

MATERIALS

finiture/ finishes
tessuti/ fabrics
ecopelle/ eco-leather
pelle/ leather

I colori chiari non devono essere messi a contatto con tessuti e capi di abbigliamento trattati con coloranti non fissati (ad esempio jeans o derivati) o con scarse solidità di tintura, onde evitare macchie e aloni di coloranti di cui non possiamo garantire la pulitura. Vi informiamo di non poterci ritenere responsabili di danni causati dall'uso improprio dei nostri spalmati.

To avoid permanent stains, light coloured products should not be brought into contact with textiles and clothing coloured with unfixed dyes. We cannot guarantee the ability to remove unknown dyes from light coloured products. Please note that we cannot be liable for damages caused by inappropriate use of our products.

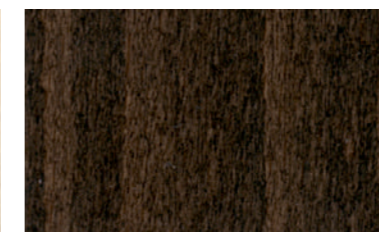
La Montbel si riserva di applicare i tessuti utilizzando il verso più consono all'articolo prescelto.

Unless specified otherwise Montbel will use its discretion to determine the direction of fabric than best suits the model selected.

ST - FINITURE STANDARD / STANDARD FINISHES



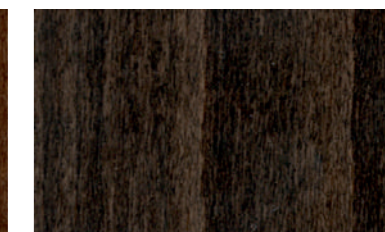
100 Faggio essenza / *Beech timber*



102 Faggio noce scuro / *Beech dark walnut*



103 Faggio noce / *Beech walnut*



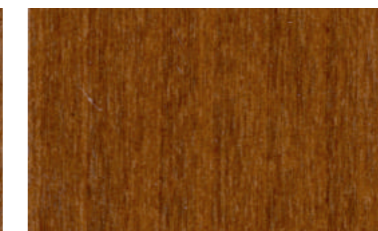
104 Faggio wengè / *Beech wengè*



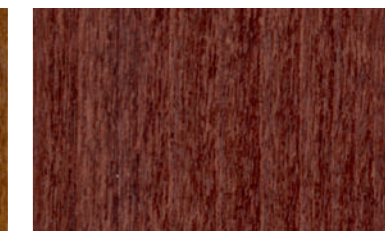
105 Faggio noce canaletto / *Beech american walnut*



106 Faggio noce biondo / *Beech light walnut*



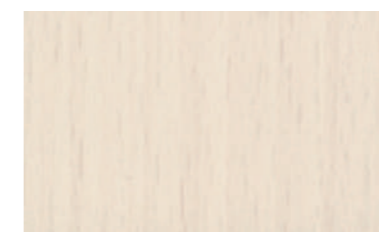
141 Faggio ciliegio scuro / *Beech dark cherry*



300 Faggio mogano / *Beech mahogany*



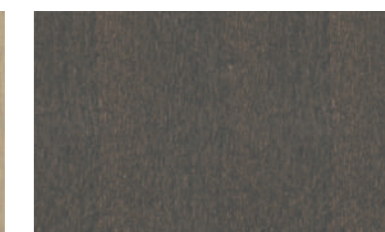
109 Rovere naturale / *Natural Oak*



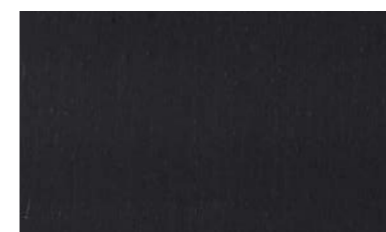
120 Bianco anilinato / *White aniline*



123 Anilina deserto / *Desert aniline*



121 Grigio anilinato / *Grey aniline*



125 Anilina nero scuro / *Dark black aniline*

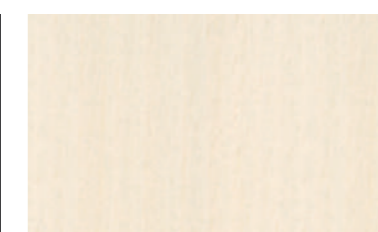
SP - FINITURE SPECIALI / SPECIAL FINISHES



001 Laccato bianco opaco / *White matt lacquer*



002 laccato nero opaco / *Black matt lacquer*



130 Anilina bianco speciale / *White special aniline*



131 Anilina grigio ghiaccio / *Light grey aniline*

LA - FINITURE LACCATE / LACQUERED FINISHES



003 Verde / Green



004 Oro satinato anticato / Satinated antic brass



1019 Grigio beige / Grey beige



1024 Senape / Mustard



1032 Giallo / Yellow



3003 Rosso / Red



5014 Celeste / Light blue



5018 Blu turchese / Turquoise blue



6003 Verde / Green



7030 Grigio staingrau / Steingrau grey



7042 Grigio / Grey



7047 Grigio chiaro / Light grey

LAMINATI STANDARD / STANDARD LAMINATES



F0104 Faggio essenza /
(100) Beech timber



H025 Faggio naturale /
(101) Beech natural



4187 Faggio noce biondo /
(106) Beech light walnut



1890 Faggio noce /
(103) Beech walnut



312 Faggio noce scuro /
(102) Beech dark walnut



4303 Faggio noce canaletto /
(105) Beech american walnut



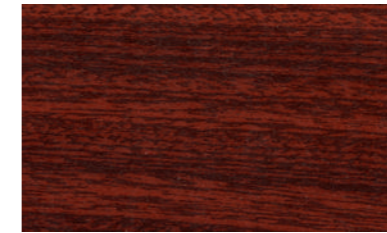
4247 Faggio ciliegio scuro /
(141) Beech dark cherry



1944 Faggio ciliegio /
(142) Beech cherry



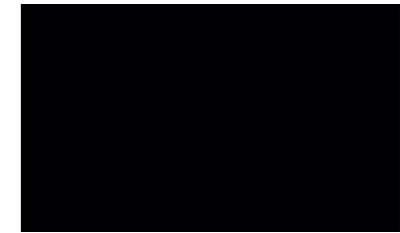
313 Faggio wengè /
(104) Beech wengè



354 Faggio mogano /
(300) Beech mahogany



020 Laccato bianco opaco /
(001) White mat lacquer



509 Laccato nero opaco /
(002) Black mat lacquer



4515 Anilina bianco speciale /
(130) White special aniline

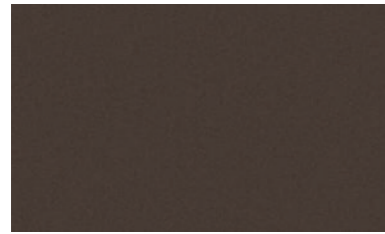


4513 Grigio anilinato /
(121) Grey aniline
Anilina grigio ghiaccio /
(131) Light grey aniline



U204 Anilina deserto /
(123) Desert aniline

LAMINATI HPL / LAMINATES HPL



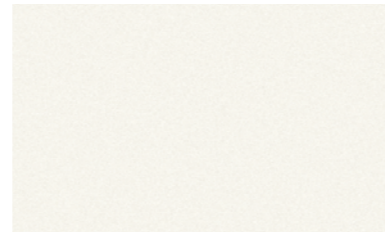
0648 Moka (bordo nero) / *Moka (black edge)*



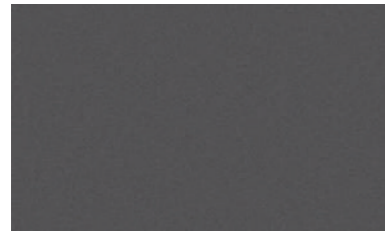
0624 Beige (bordo nero) / *Beige (black edge)*



0625 Nero (nero compatto) / *Black (total black)*

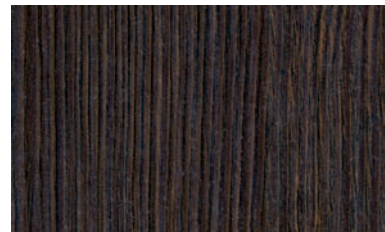


0626 Bianco (bordo nero o bianco compatto) / *White (black edge or total white)*

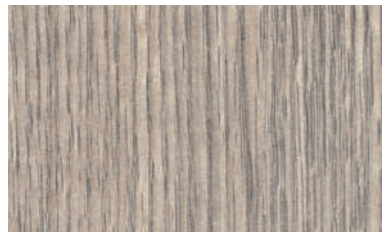


0077 Antracite (bordo nero) / *Antracite (black edge)*

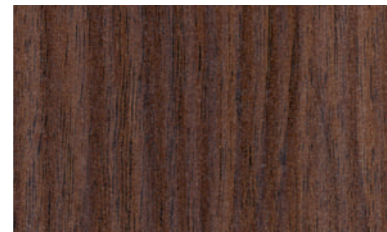
LAMINATI CLEAF / LAMINATES CLEAF



LK 10 Matrix



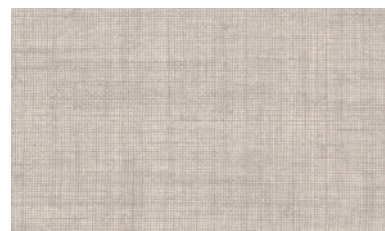
LK 97 Matrix



LK 48 Matrix



FA 41 Penelope



FA 44 Penelope



FA 48 Penelope

FINITURE METALLI / METAL FINISHES



NGO Nero gofrato / *Black hammered*



NL0 Nero / *Black*



ILO Inox lucido / *Polished stainless steel*



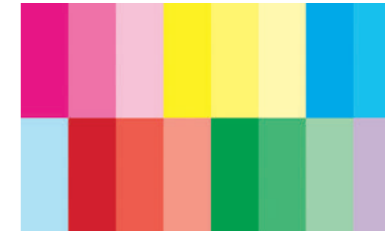
ISO Inox satinato / *Brushed stainless steel*



oro



oro rosa



Laccato RAL / *RAL Lacquered*

SCIVOLI STANDARD / STANDARD GLIDERS



B Plastica (ceramica, piastrelle) / *Plastic (ceramic, tiled floor)*



C Feltro (ceramica, piastrelle, legno) / *Felt (ceramic, tiled floor, parquet)*



D Nylon marrone con gomma nera (moquette, ceramica, piastrelle, marmo, pietra) / *Brown nylon with black rubber (carpet, ceramic, tiled floor, marble, stone)*

SCIVOLO SPECIALE / SPECIAL GLIDER

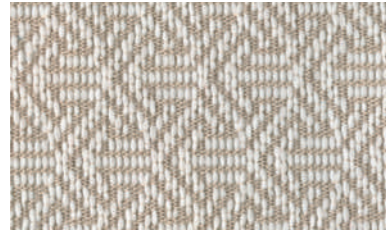


E Teflon (ceramica, piastrelle, marmo, pietra, moquette, legno) / *Teflon (ceramic, tiled floor, marble, stone, carpet, wood)*

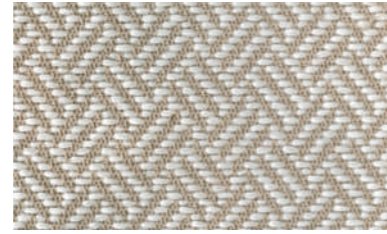
JAC/ Cat. A



ENCANTADO 100



GUAPO 100



CHICO 100



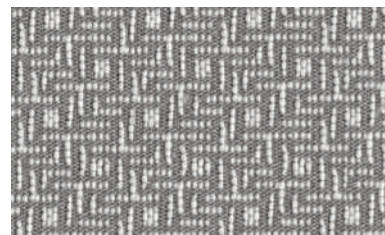
ENCANTADO 400



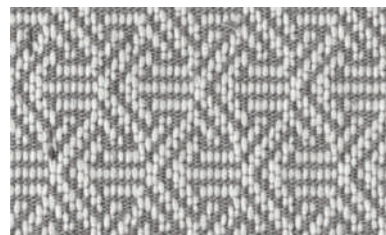
GUAPO 400



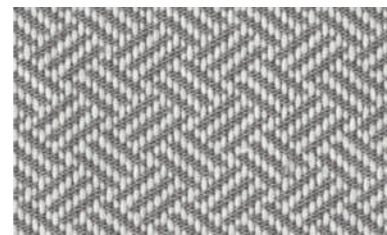
CHICO 400



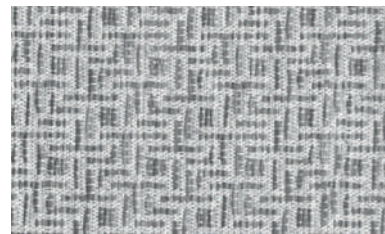
ENCANTADO 402



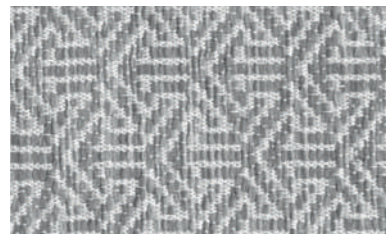
GUAPO 402



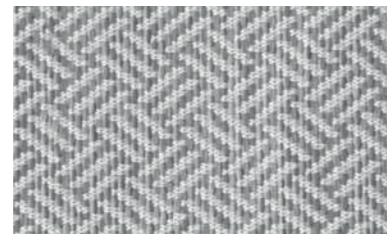
CHICO 402



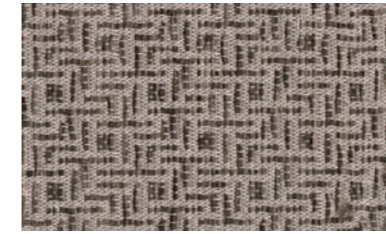
ENCANTADO 605



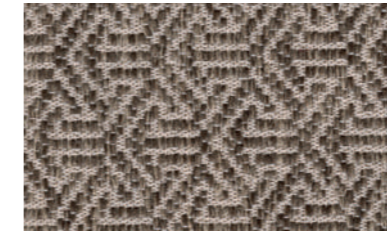
GUAPO 605



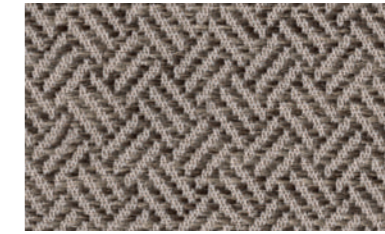
CHICO 605



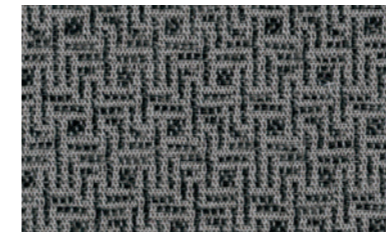
ENCANTADO 401



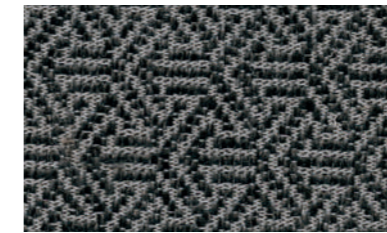
GUAPO 401



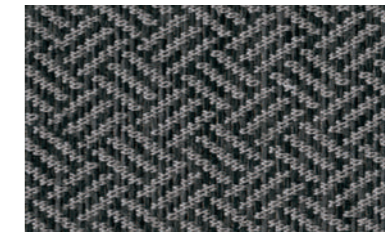
CHICO 401



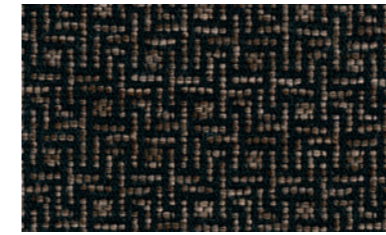
ENCANTADO 600



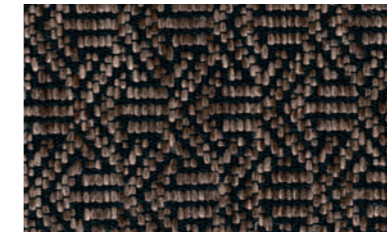
GUAPO 600



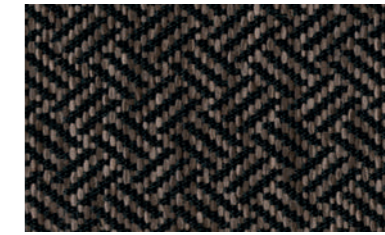
CHICO 600



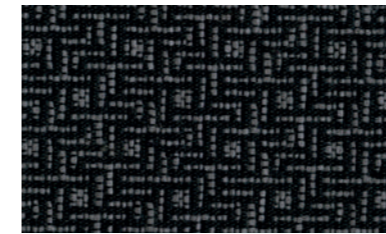
ENCANTADO 404



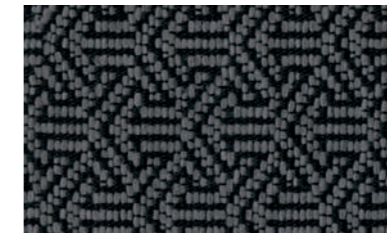
GUAPO 404



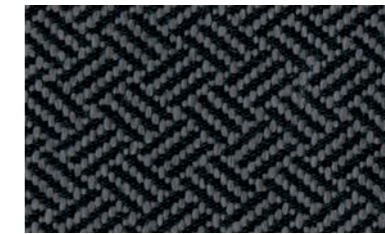
CHICO 404



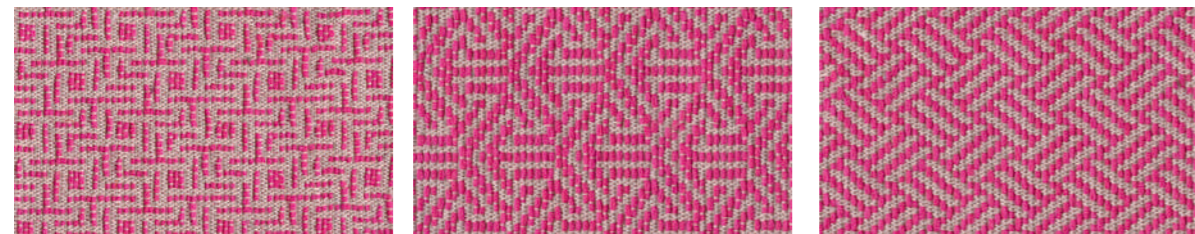
ENCANTADO 604



GUAPO 604



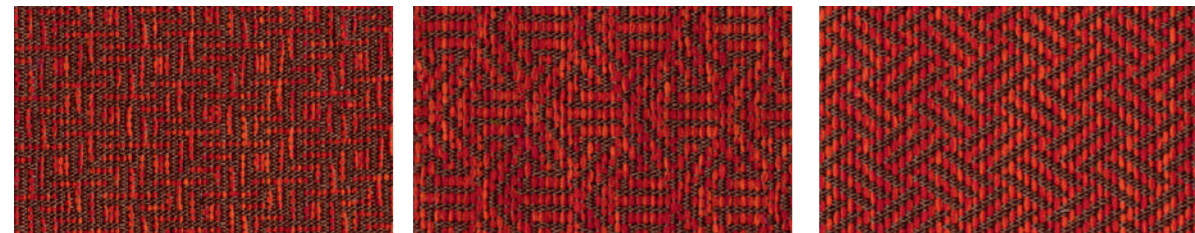
CHICO 604



ENCANTADO 911

GUAPO 911

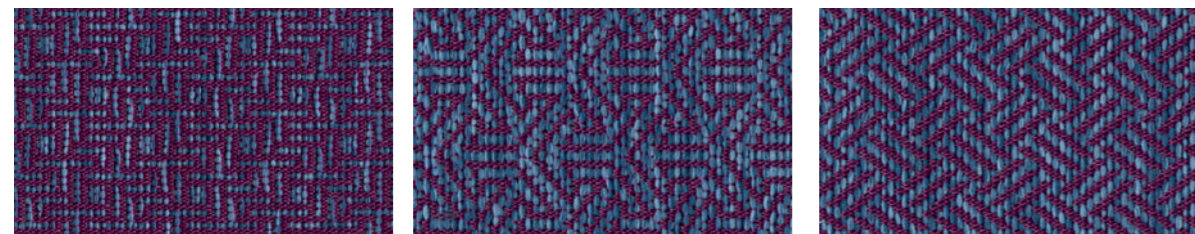
CHICO 911



ENCANTADO 301

GUAPO 301

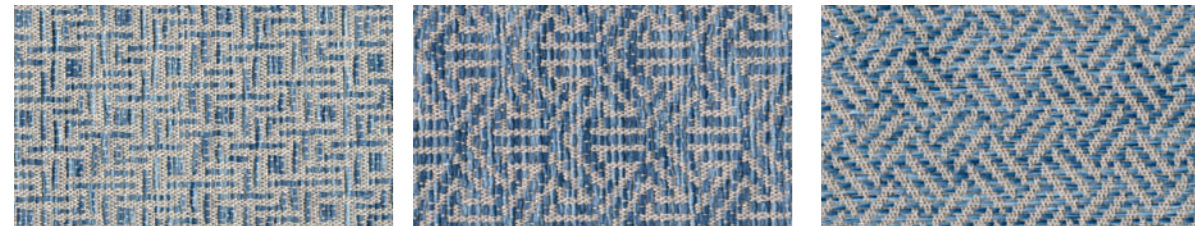
CHICO 301



ENCANTADO 001

GUAPO 001

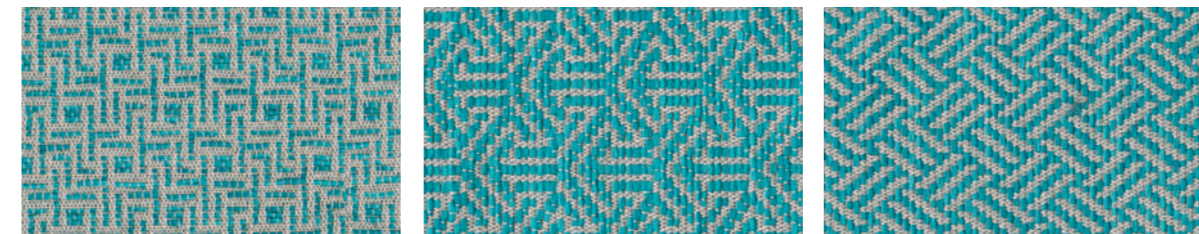
CHICO 001



ENCANTADO 700

GUAPO 700

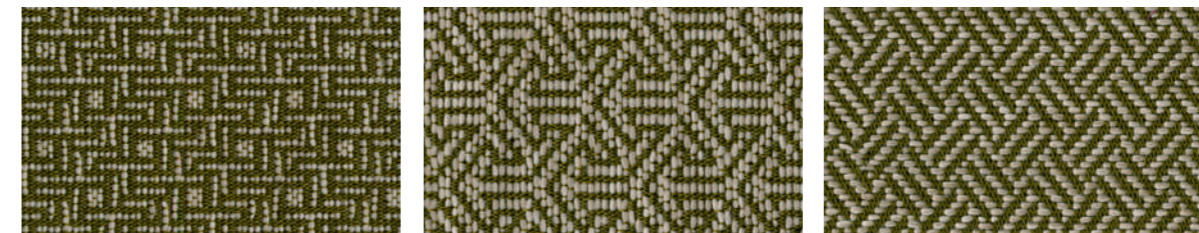
CHICO 700



ENCANTADO 711

GUAPO 711

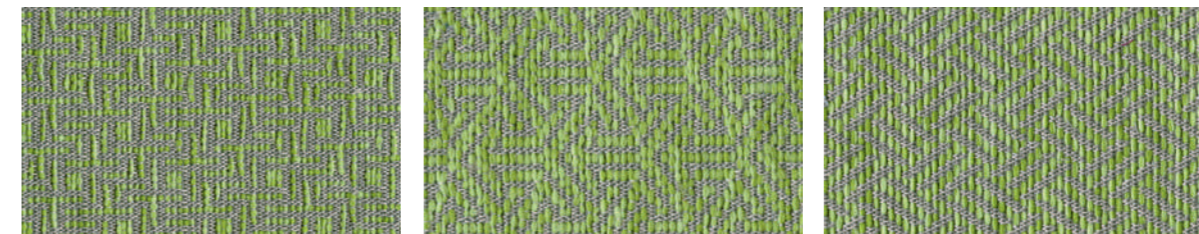
CHICO 711



ENCANTADO 803

GUAPO 803

CHICO 803



ENCANTADO 804

GUAPO 804

CHICO 804

Composizione / Composition

51% PP - 33% PL - 16% CO

Peso / Weight

530 g/m

**Resistenza all'abrasione (Martindale) /
Abrasion resistance (Martindale)**

> 25.000 rubs
ISO 12945-2

**Solidità del colore alla luce artificiale /
Colour resistance to artificial light**

4/5
ISO 105-X12

**Sfregamento a secco /
Rubbing (dry)**

4/5
ISO 105-X12

**Sfregamento ad umido /
Rubbing (wet)**

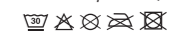
4
ISO 105-X12

**Resistenza al fuoco /
Fire resistance**

EN1021 part1, Classe 1IM

**Manutenzione /
Maintenance**

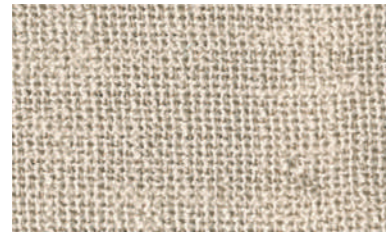
Non centrifugare, idrorepellente,
irrestringibile/ Do not centrifugate,
water repellent, no shrink



ALFANO/ Cat. B



4351-5



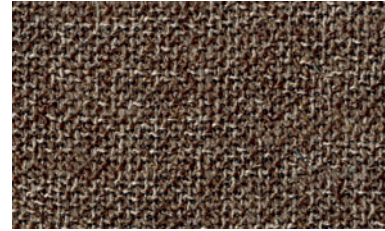
4351-4



4351-3



4351-2



4351-1



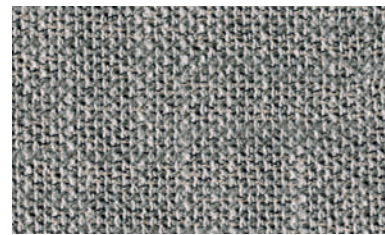
4351-7



4351-8



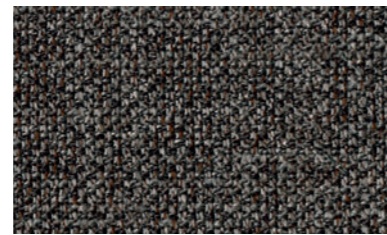
4351-6



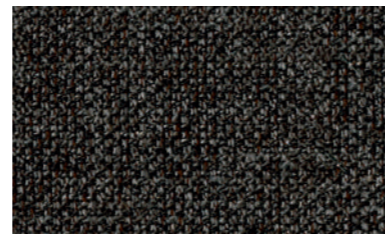
4351-20



4351-22



4351-21



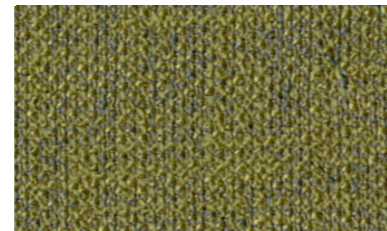
4351-23



4351-9



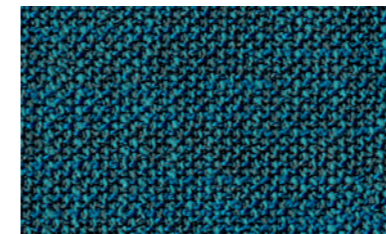
4351-19



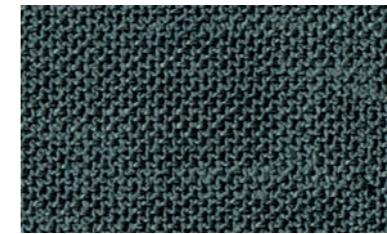
4351-18



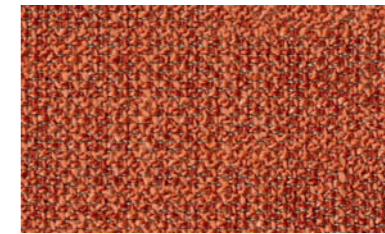
4351-15



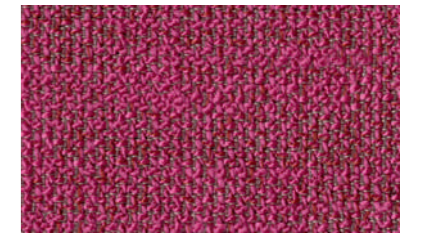
4351-16



4351-17



4351-11



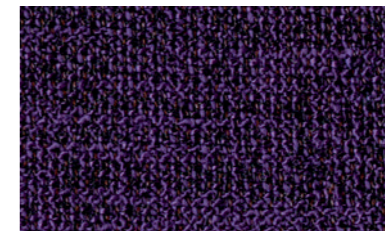
4351-12



4351-10



4351-14



4351-13

Composizione / Composition

29% Acrilico/Acrylic - 19% Cotone/Cotton
- 52% Poliestere/Polyester

Altezza totale / Total width

140 cm

Peso / Weight

602 g/m

Solidità del colore / Colour fastness

Class 5-6

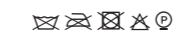
Martindale

30.000

Manutenzione / Maintenance

Tessuto non ignifugo / Fabric not fire proof.

A partire da 25 m prodotto ignifugabile. Incremento di 4 settimane di consegna allo standard /
Fabric can be fire proof treated (min 25m). Increase of 4 weeks on standard delivery time.



PUCCINI/ Cat. B



UNI/ Cat. B



Composizione / Composition

29% Acrilico/Acrylic - 19% Cotone/Cotton
- 52% Poliestere/Polyester

Altezza totale / Total width

140 cm

Peso / Weight

602 g/m

Solidità del colore / Colour fastness

Class 5-6
UNI EN ISO 105-B02

Martindale

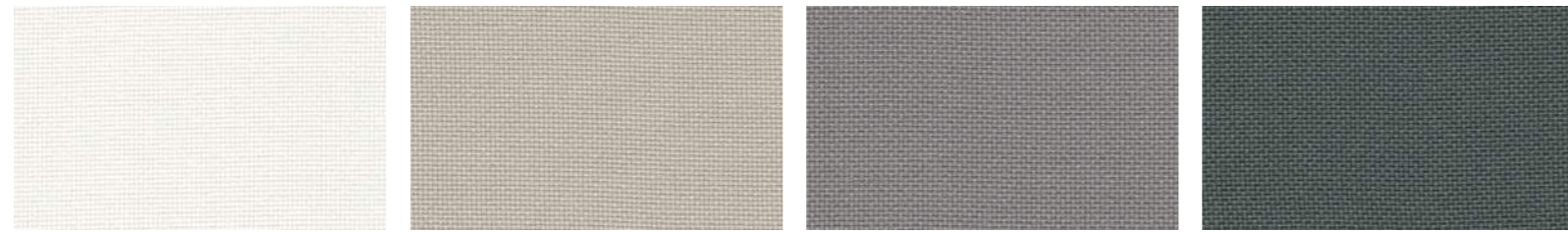
30.000

Manutenzione / Maintenance

Tessuto non ignifugo / Fabric not fire proof.

A partire da 25 m prodotto ignifugabile. Incremento di 4 settimane di consegna allo standard /
Fabric can be fire proof treated (min 25m). Increase of 4 weeks on standard delivery time.



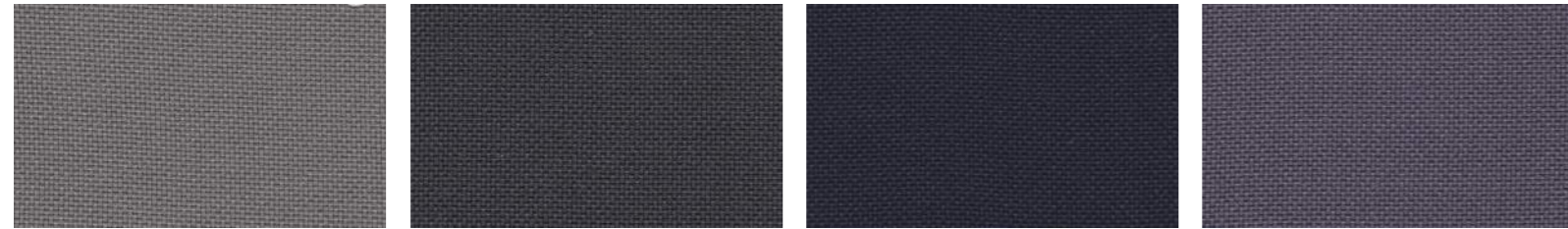


60079

60093

60080

60081

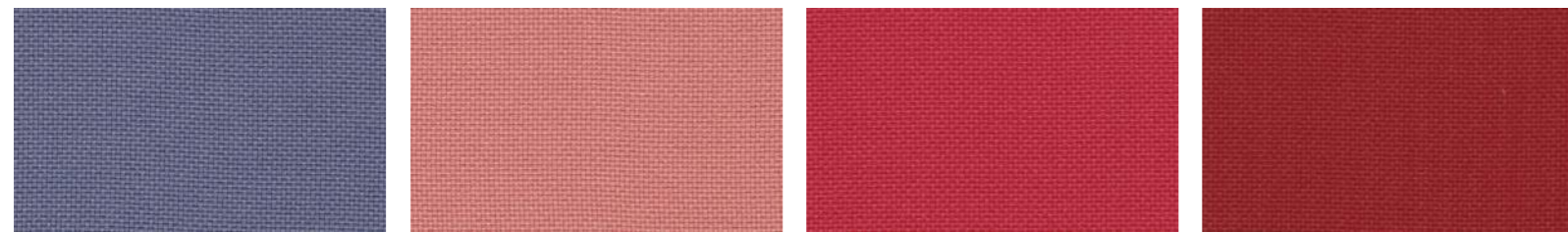


60083

60084

66134

65086



65085

64183

64174

64175

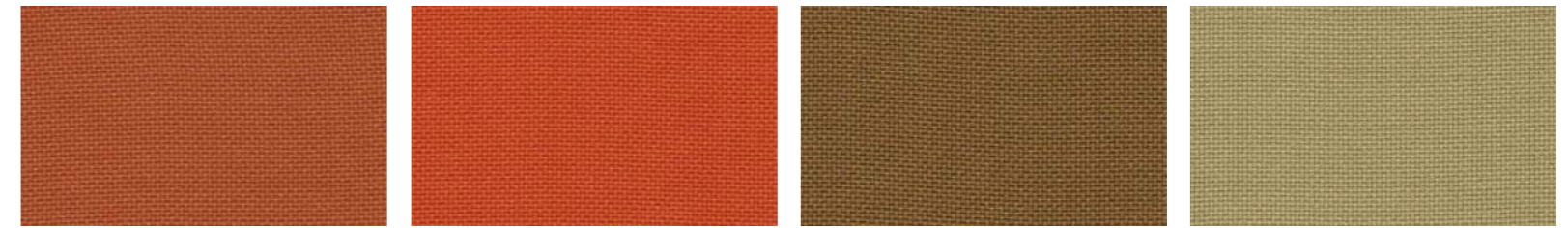


64172

61145

61144

64171

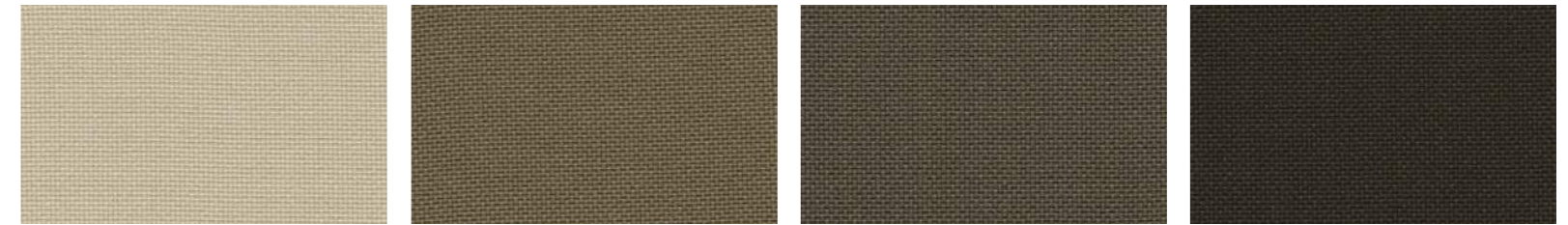


63080

63079

61143

61142

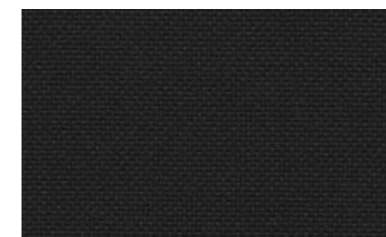


61138

61139

61140

61141



60999

Composizione / Composition

100% Trevira CS

Peso / Weight

435 g/m (14.03 oz/in. yd.)

Pilling

5
Scale 1-5, max. 5 - EN ISO 12945-2

**Resistenza all'abrasione (Martindale)/
Abrasion reistance (Martindale)**

100.000 rubs

**Resistenza del colore alla luce/
Colour fastness to light**

5-8
Scale 1-8, mx. 8 - EN ISO 105-B02

**Solidità del colore allo sfregamento/
Colour fastness to rubbing**

4-5 umido-secco/wet-dry
Scale 1-5, max. 5 - EN ISO 105-X12

Infiammabilità/ Flammability

EN 1021 1&2, BS 5852 0&1, BS5852
Crib 5, DIN 4102.B1, FAR/JAR 25 853,
önorm B3825 B1-Q1, NFP92-503/4/5,
M1, Class Uno UNI 9175 Class 1,
EMME/BS 7116 Med. Hazard, AM 18 NF
D80-013, CA TB 117-2013

US ACT

AATCC 16 Lightfastness pass, AATCC
8 or 116 wet/dry crocking, California
Bulletin CAL117-E Class 1 ASTM
D4157-07 Wyz Abrasion (HDU) ASTM
D3511 Pilling, CA TB 117-2013

DANZI/ Cat. B



0026

0032

0029

0056



0063

0022

0060

0015



0062

0033

0058

0028



0053

0034

0035

0036

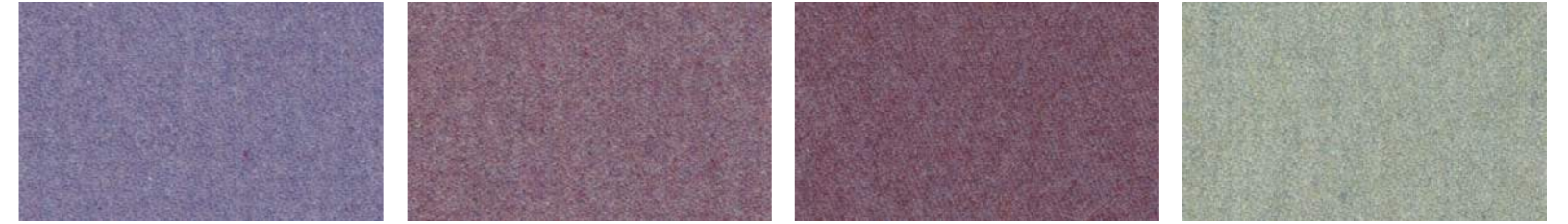


0020

0050

0037

0038



0039

0040

0041

0042



0043

0064

0052

0027



0059

0061

0055

0016



SUPER/ Cat. C



Composizione / Composition
70%WO - 20% PL - 5% PA - 5% AF

Peso / Weight
490 g/m

Martindale
> 40.000
(UNI EN ISO 12947 12 kpa)

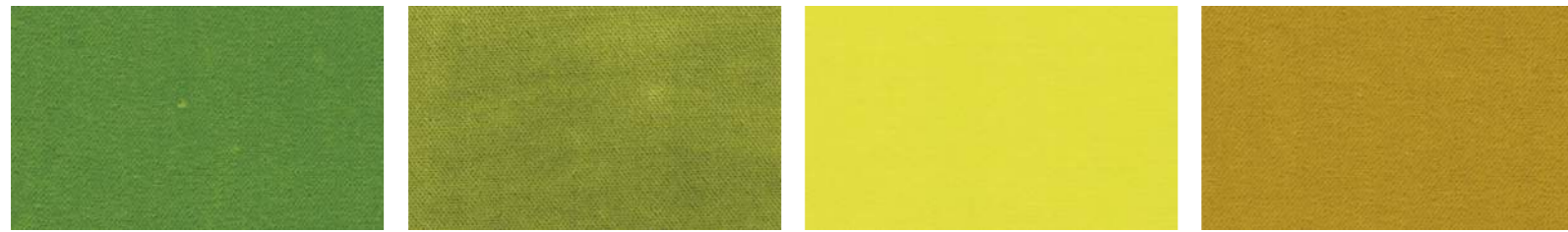
Pilling
500 cycles, 4/5 - 1000 cycles 4, 2000
cycles, 3-4 - 5000 cycles, 3-4 (12945-2)

**Solidità del colore alla luce /
Colour fastness to light**
4-5
UNI ISO 105 B02

**Solidità del colore allo sfregamento /
Colour fastness to crocking**
4-5 Dry / A secco
4 Wet / Ad umido

**Resistenza al fuoco /
Fire resistance**
Cigarettes Test (EN 1021/1)
Match Test (EN 1021/2)

**Manutenzione /
Maintenance**
☒ ✖ Ⓟ Ⓢ ☒

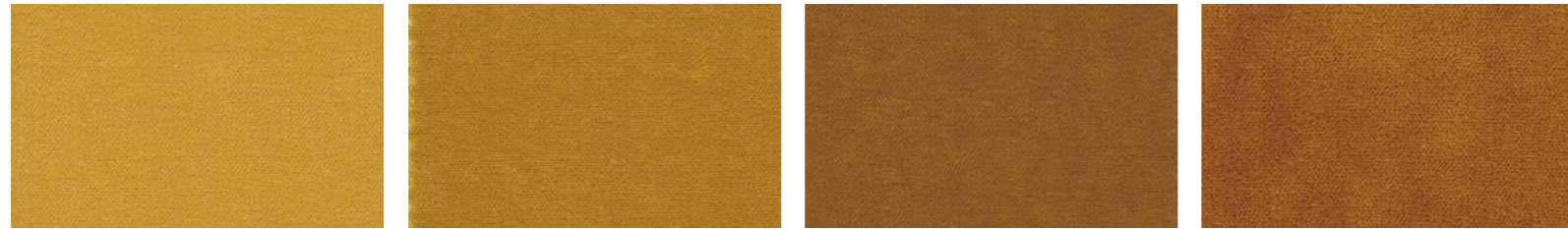


138

139

105

106



107

108

110

111



112

113

114

115



116

117

118

119

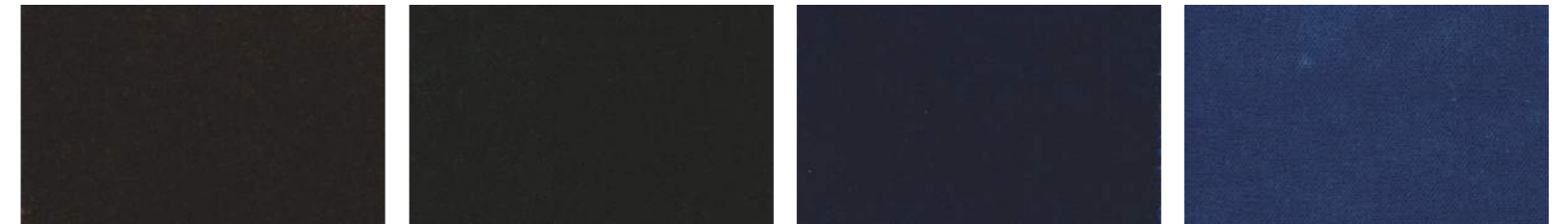


120

121

122

123



124

128

127

126



125

129

130

153



152

151

150

147

Composizione / Composition

100% PES FR

Peso / Weight

400 g/m²

Pilling

5
UNI EN ISO 12945-2

**Resistenza all'abrasione/
Abrasion resistance**

60.000 cycles
UNI EN ISO 12947-2

**Solidità del colore allo sfregamento a secco/
Colour fastness to dry rubbing**

4
UNI EN ISO 105-X12

**Solidità del colore allo sfregamento ad umido/
Colour fastness to wet rubbing**

4
UNI EN ISO 105-X12

**Solidità del colore alla luce/
Colour fastness to light (Xenotest)**

>5 blue scale
UNI EN ISO 105-B02

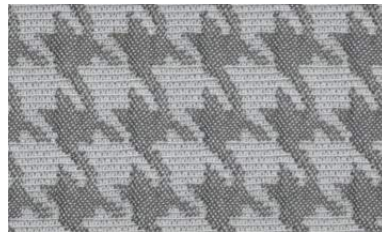
Resistenza la fuoco/ Fire resistance

EN 1021-1, EN 1021-2, UNI 9175 - 1IM,
UNI 9177 - Class1, BS 5852 - CRIB 5,
NF 92.503-M1, DIN 4102 -B1

POPI/ Cat. D



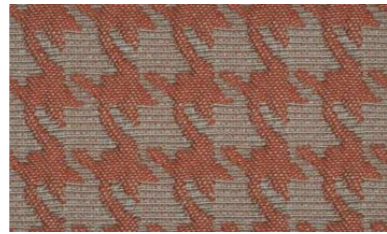
102



114



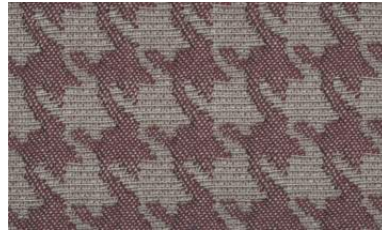
106



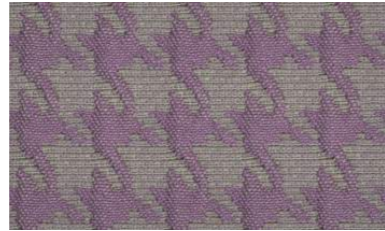
103



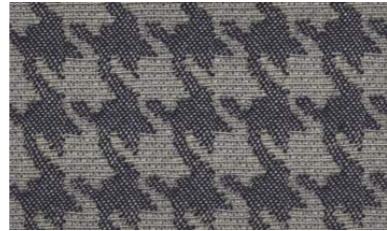
107



110



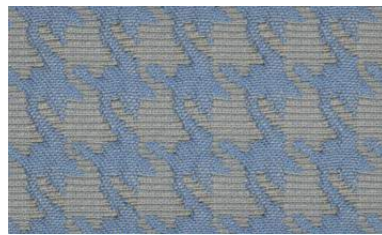
115



109



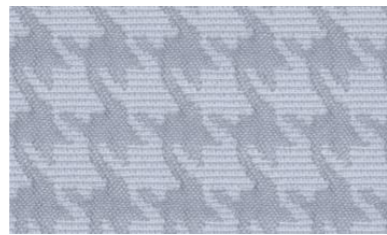
111



108



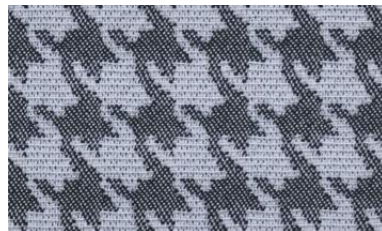
116



101



113



112

Composizione / Composition

100% PES

Peso / Weight

420 g/m²

Pilling

4
UNI EN ISO 12945-2

**Resistenza all'abrasione /
Abrasion resistance**

35.000 cycles
UNI EN ISO 12947-2

**Solidità del colore alla luce artificiale /
Colour fastness to artificial light**

5/6 blue scale
UNI EN ISO 105-B02

**Solidità del colore allo sfregamento a
secco / Colour fastness to rubbing (dry)**

4/5 grey scale
UNI EN ISO 105-X12

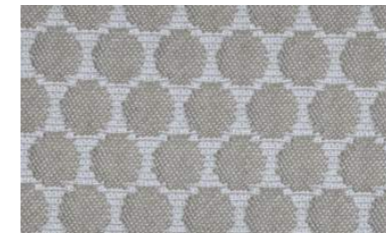
**Solidità del colore allo sfregamento ad
umido / Colour fastness to rubbing (wet)**

4/5 grey scale
UNI EN ISO 105-X12

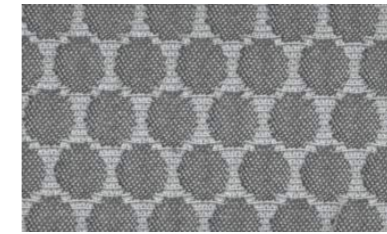
**Resistenza al fuoco /
Fire resistance**

BS5852:2006 (p.11 CRIB 5), EN 1021-1,
EN 1021-2, UNI 9175:2010 Classe 1 IM

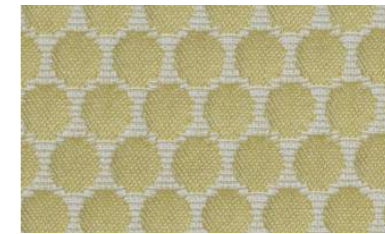
BOLLE/ Cat. D



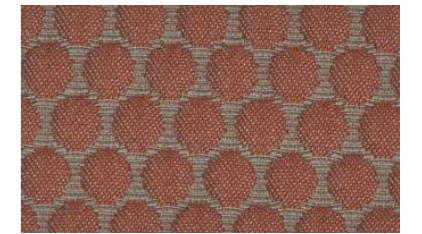
2



14



6



3



7



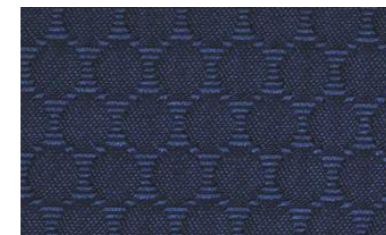
10



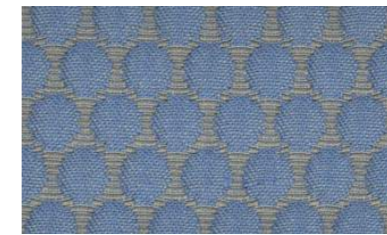
15



9



11



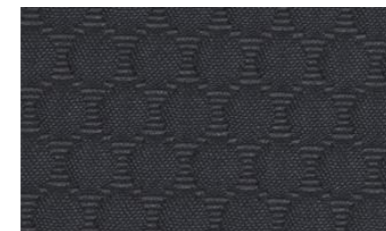
8



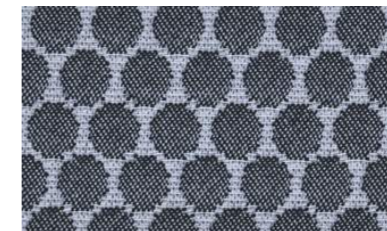
16



1



13



12

Composizione / Composition

100% PES

Peso / Weight

420 g/m²

Pilling

4
UNI EN ISO 12945-2

**Resistenza all'abrasione /
Abrasion resistance**

35.000 cycles
UNI EN ISO 12947-2

**Solidità del colore alla luce artificiale /
Colour fastness to artificial light**

5/6 blue scale
UNI EN ISO 105-B02

**Solidità del colore allo sfregamento a
secco / Colour fastness to rubbing (dry)**

4/5 grey scale
UNI EN ISO 105-X12

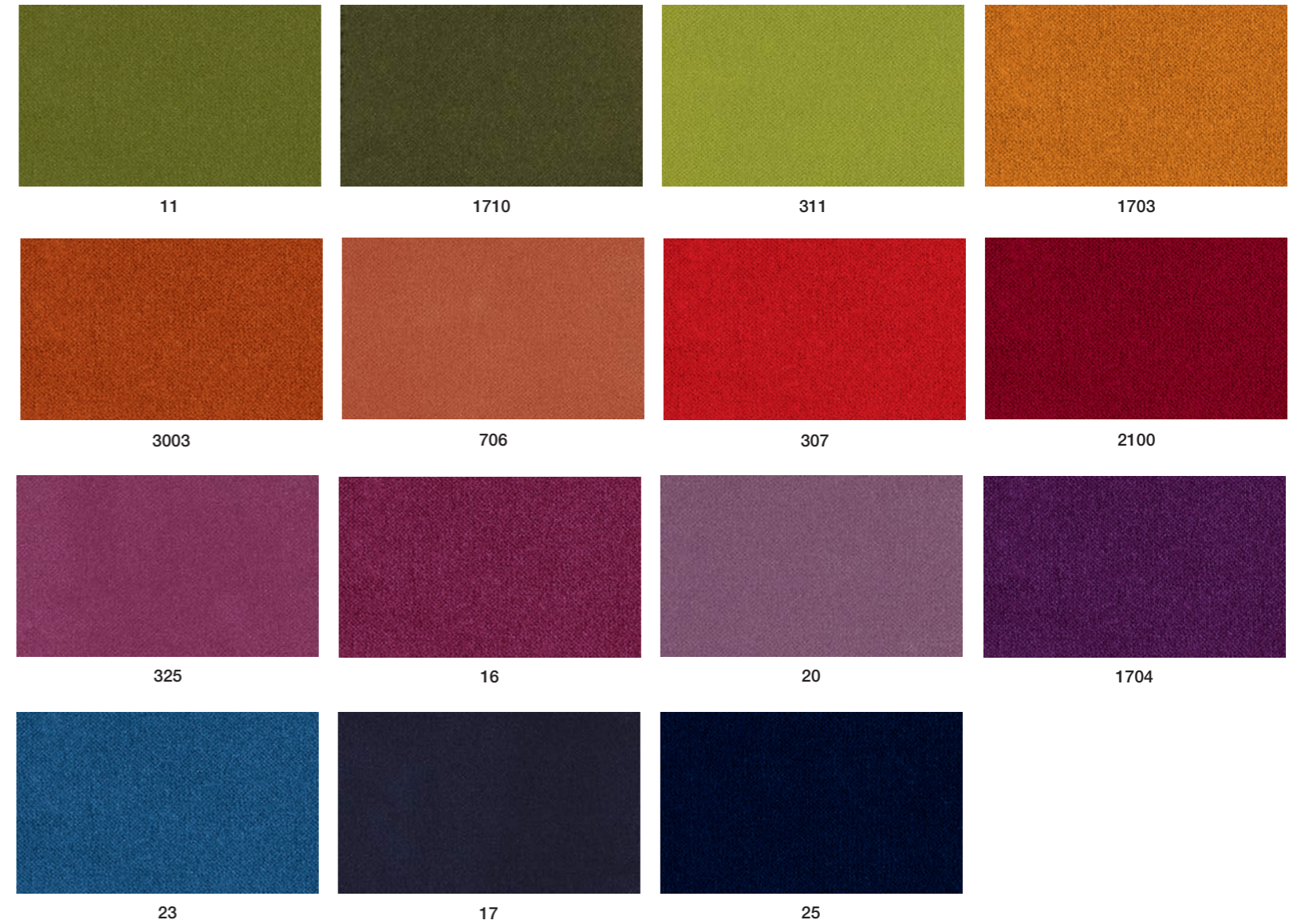
**Solidità del colore allo sfregamento ad
umido / Colour fastness to rubbing (wet)**

4/5 grey scale
UNI EN ISO 105-X12

**Resistenza al fuoco /
Fire resistance**

BS5852:2006 (p.11 CRIB 5), EN 1021-1,
EN 1021-2, UNI 9175:2010 Classe 1 IM

LUNA/ Cat. D



Composizione / Composition

100% Trevira CS

**Peso per metro lineare/
Weight per line meter**

605 g/m

**Abrasione martindale/
Martindale abrasion**

100.000 rubs
EN ISO 12947-2

**Solidità del colore alla luce artificiale/
Colour fastness to artificial light**

4/5 - 5 ISO 105-B02

**Resistenza del colore allo sfregamento a
secco / Colour resistance to rubbing (dry)**

5
UNI EN ISO 105-X12

**Resistenza del colore allo sfregamento ad
umido / Colour resistance to rubbing (wet)**

4/5 - 5
UNI EN ISO 105-X12

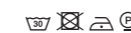
Resistenza la fuoco/ Fire resistance

Class 1 IM, M, B1 DIN 4102, EN 1021,
BS5852 crib5, NFTA 701, EN 13733, IMO
7-8, California TB 117

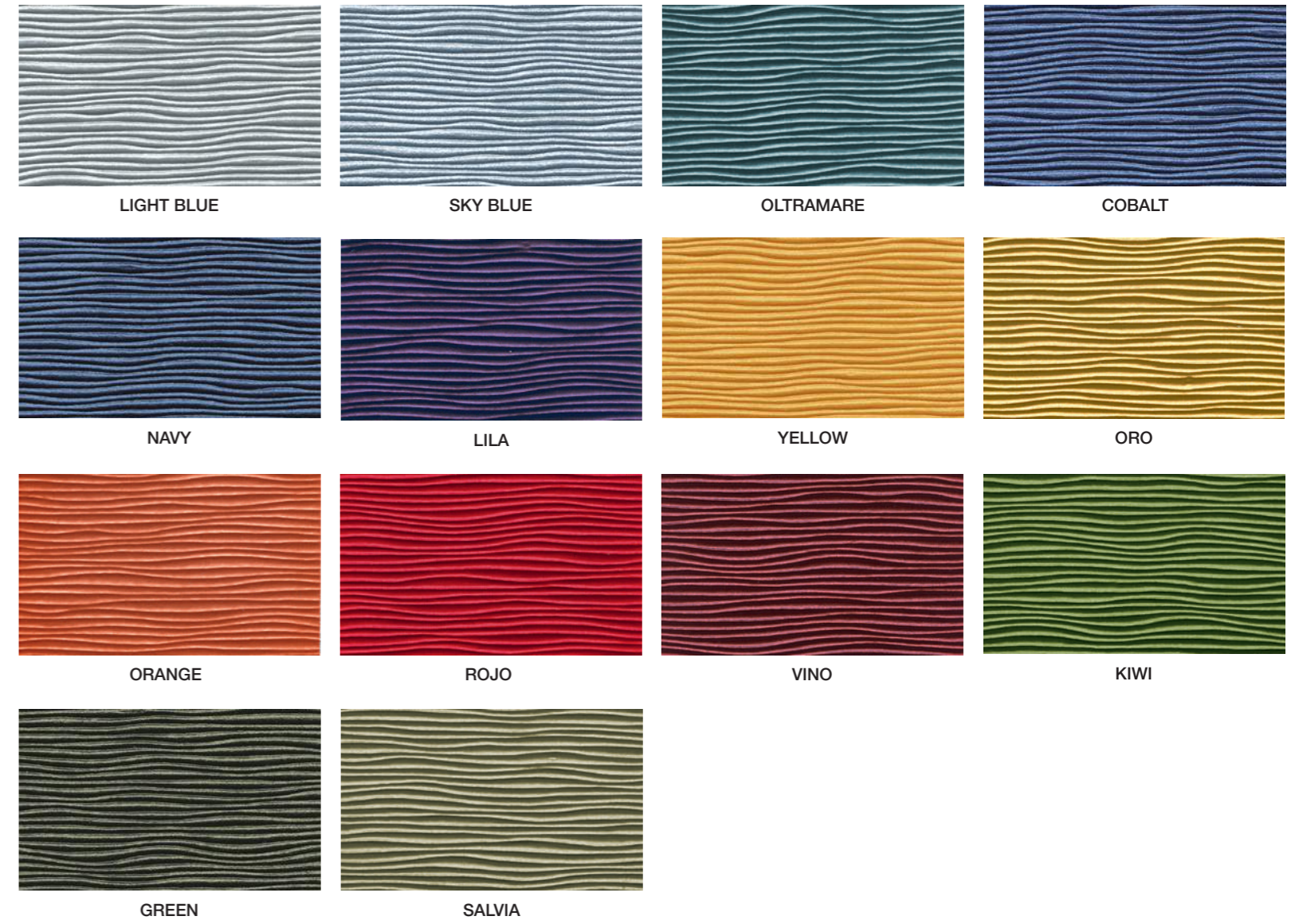
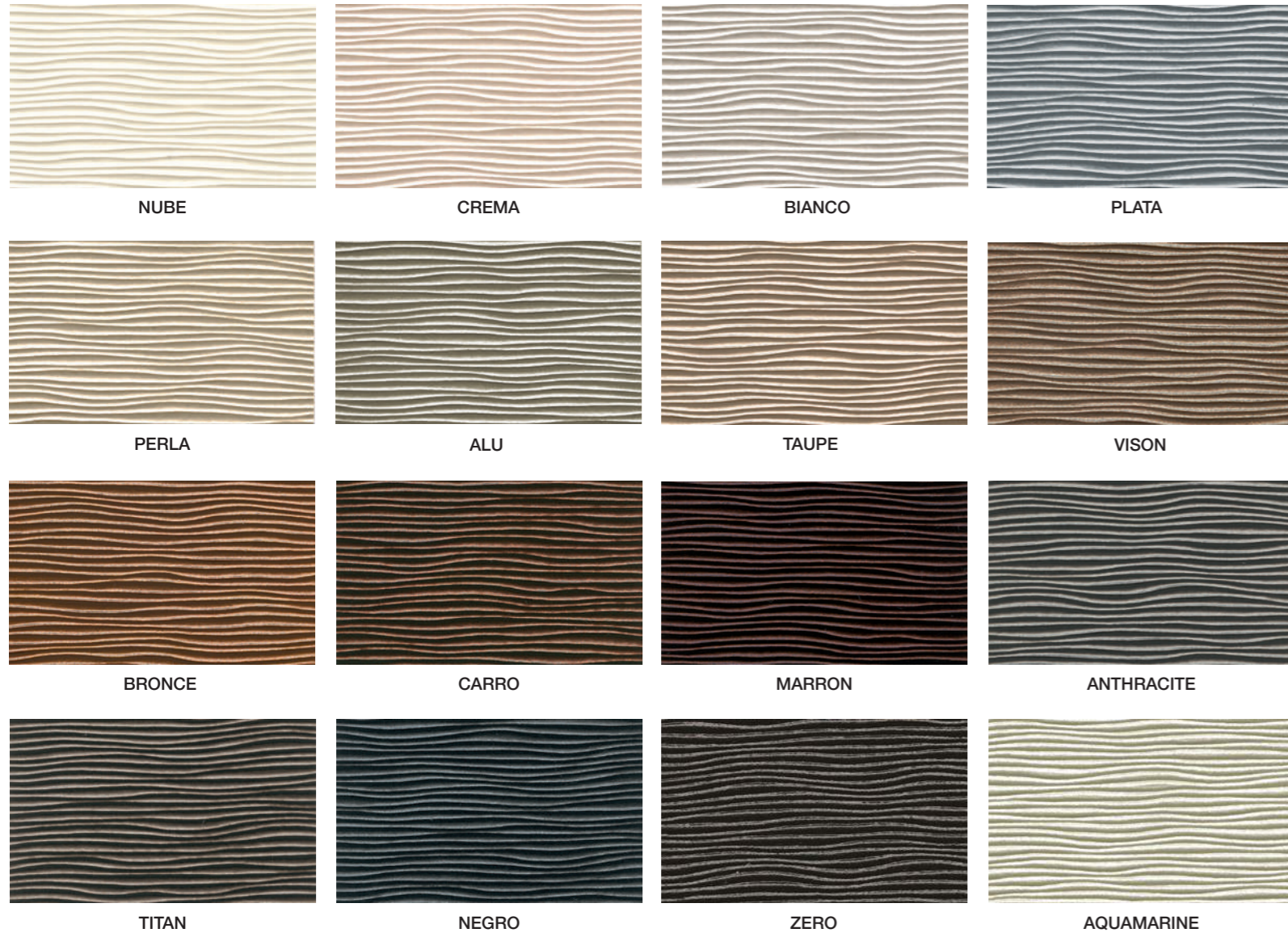
SETA/ Cat. A - Ecopelle / *Eco-leather*



Composizione / Composition	Peso / Weight	Solidità del colore/ Colour fastness	Abrasion Martindale/ Abrasion Martindale
100% Poliestere/ Polyester	820 g/m ²	4	>200.000 cycles
Resistenza allo strappo/ Tear strength	Resistenza alla rottura/ Breaking strength	Resistenza al calore/ Heat resistance	Resistenza al fuoco/ Fire resistance
60 N/cm - Weft 40 N/cm - Warp	100 N/cm - Weft 90 N/cm - Warp	100C°	UNI EN 1021 parts 1-2, BS 5852 cigarettes & match, M2 France (Optional)
Antihydrolysis Jungle Test	Manutenzione/ Maintenance		
10 weeks	Non usare mai cera, smacchiatori o solventi./ <i>Never use polish, stain removers or solvent.</i>		



PERLA/ Cat. B - Ecopelle / *Eco-leather*



Composizione / Composition
70% PVC - 30% PV

Peso / Weight
820 g/m

Supporto/ Back coating
100% Polyester

Resistenza al fuoco/ Fire resistance
EN 1021 Part 1&2, BS 5852 Part 1&2

**Abrasione Martindale/
Abrasion Martindale 12 Kpa**
200.000 cycles

**Solidità del colore alla luce/
Colour fastness to light**
4

Resistente/ Resistant
10 weeks = +/- 10 years
Jungle test

Esente da/ Free
Ftalati/ Phthalates
Meet Reach Standard - Eco & Free

ADVAN/ Cat. B - Ecopelle / *Eco-leather*





Composizione / Composition

83% PVC - 17% CO/PL

Peso / Weight

650 +/-50 g/m²
DIN EN ISO 2286-2

Resistenza al fuoco/ Fire resistance

Class 1/IM
DIN 75200, BS 5852, B1AT, 5.3-CH -
FMVSS 302, DIN EN1021 PARTE 1+2,
M2, UNI 9175 ITALIA

**Abrasione Martindale/
Abrasion Martindale 12 Kpa**

100.000 cicli/ cycles
DIN EN ISO 13934-1, BS 5690

**Solidità del colore alla luce/
Colour fastness to light**

< 6 scala blu/ blue scale

Flessibilità/ Flexibility

Temp. 20 C°

100.000 cicli/ cycles
DIN 53351

EXTREMA Cat. C - Ecopelle / *Eco-leather*

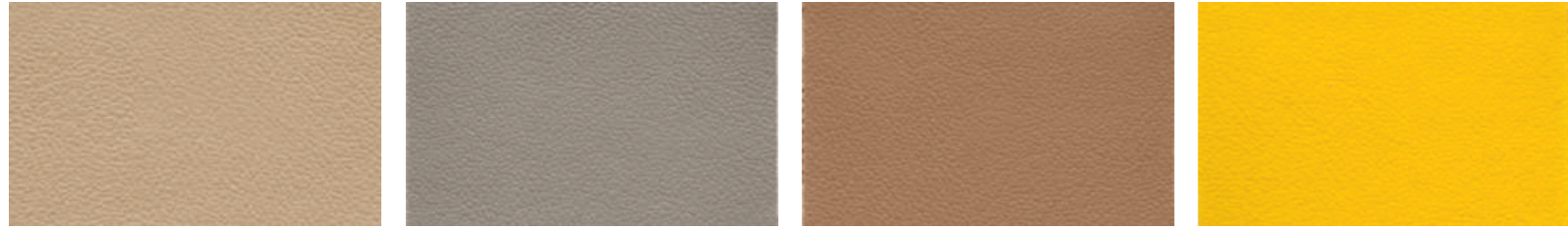


150

3750

250

550



350

450

1150

2350



650

2950

750

3250



850

3150

4050

3550

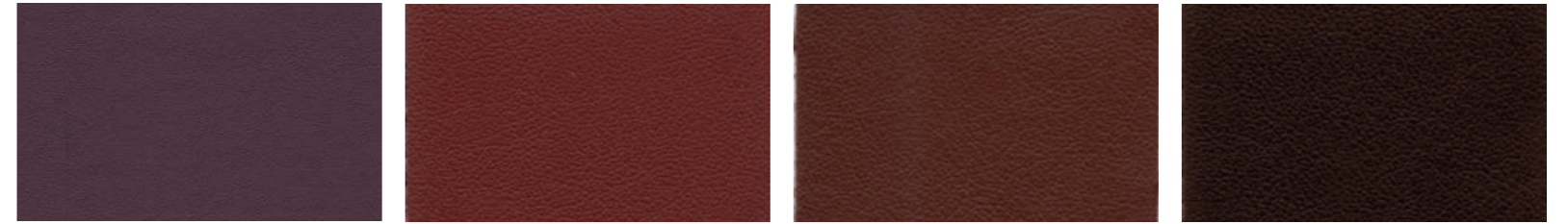


4350

2750

2850

950

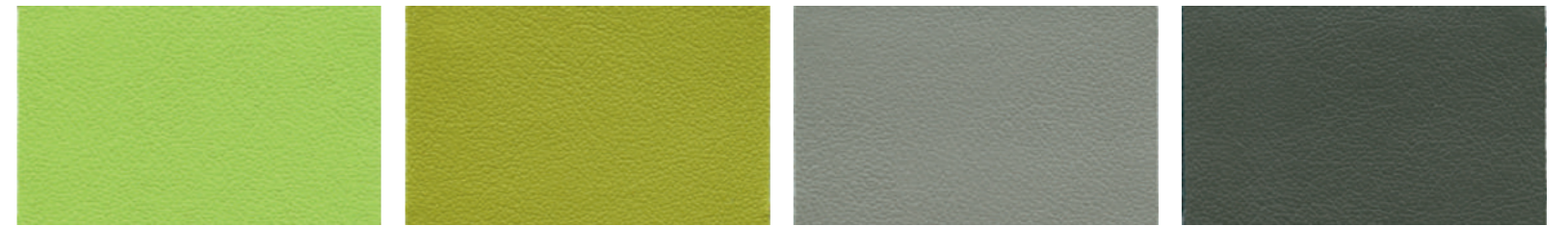


4850

1050

1250

1350



1650

2450

1450

1550



3950

4650

4550

4150



POLO/ Pelle / Leather



Composizione / Composition

63% PU - 37% CO

Peso / Weight

480 g/m²

**Resistenza all'abrasione/
Abrasion resistance**

150.000 rubs
EN ISO 12947-2/2000

**Solidità del colore alla luce/
Colour fastness to light**

5-6 - Scale 1-8 max. 8
EN ISO 105-B02

Solidità al sudore/ Solidity to sweat

Acid/alkaline 4-5 - Grey scales
UNI EN ISO 105 E04/98

Tropical test

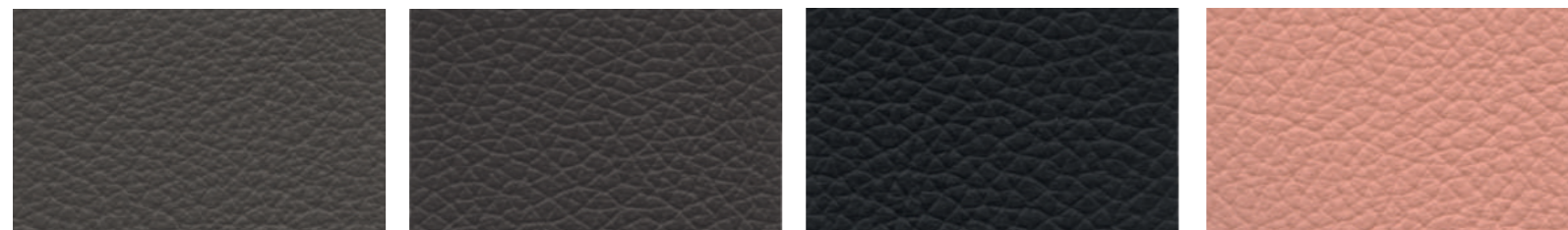
70 C° - Days 60 Unchanged

Resistenza al fuoco/ Fire resistance

IMO Resolution A.652(16)/89, EN 1021-2/93, BS 5852-1/79, BS5859/90 S.4 crib 5, UNI 9175/87e 9175 FA-1/94 Classe 1IM (uno I emme)

Trattamento/ Treatment

Ultra-fresh, antibatterico, antiacaro. Determina freschezza igienica duratura./
Ultra-fresh, antimicrobial, antiacarus. It determines durable hygenic freshness.

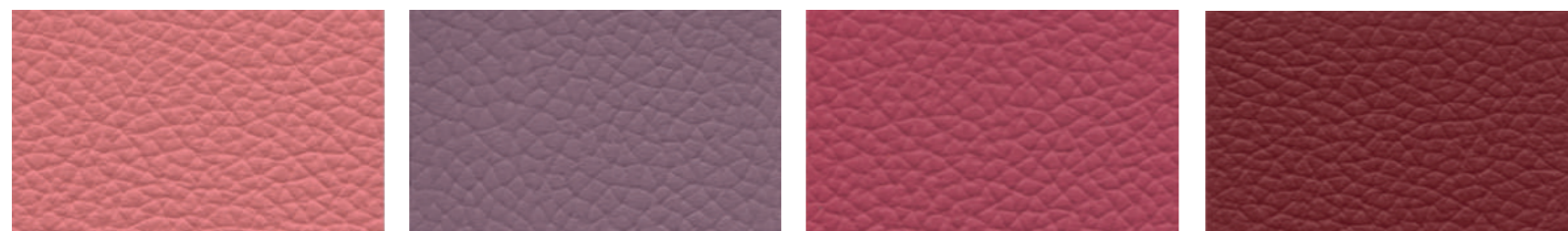


859

825

860

847



848

880

849

844

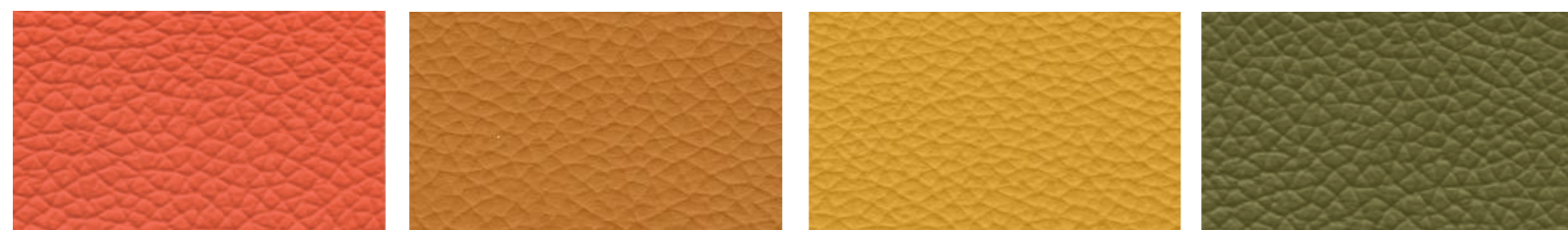


850

843

842

840

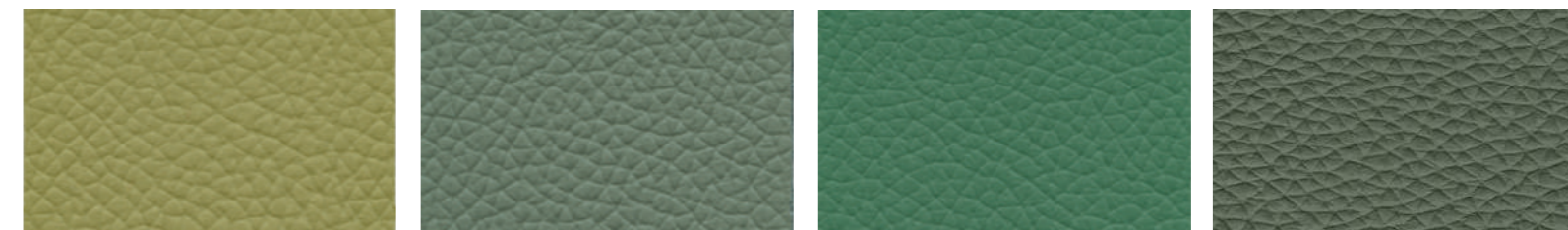


839

838

837

881

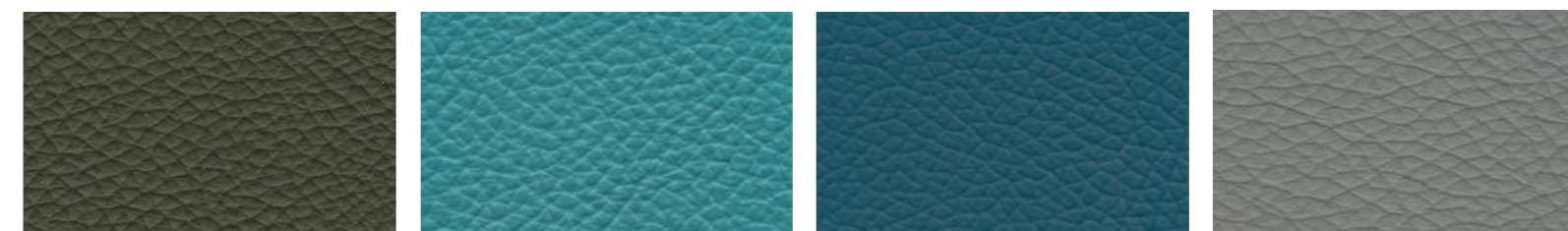


882

828

829

830

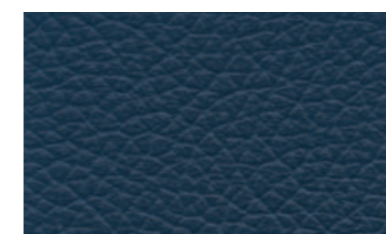


831

851

855

878



853

Origine / Origin

Raw Hides (UE)

Peso / Weight

700 g/m²

Spessore/ Thickness

0.9 - 0.11 mm

**Solidità del colore alla luce/
Colour fastness to light**

Value 7 blue scale

**Solidità dello sfregamento ad umido/
Wet rub fastness**

150 cycles value 4 grey scale
ISO 11640

**Solidità dello sfregamento a secco/
Dry rub fastness**

500 cycles value 5 grey scale
ISO 11640

**Resistenza alla flessione ripetuta/
Flex crack resistance**

20.000 cycles
ISO 5402

Resistenza la fuoco/ Fire resistance

British standard BS5852 Part 1 NI/O:
Cigarette test n°1 Match test; lmo FTP:
Part 8 - Resolution A.652 (16), NI/O:
Cigarette test NI/1: Match test

