

MERIDIANI

OPEN AIR
Prodotti 2024

Suggerimenti e richiami nel design del prodotto

Products design influences



NUOVO MATERIALE

NEW MATERIAL

NUOVI COLORI

NEW COLORS

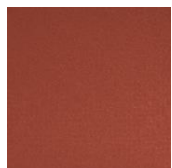




STRUCTURES: NEW COLORS



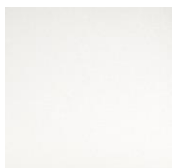
2024
Collection Open Air
MERIDIANI
New colors



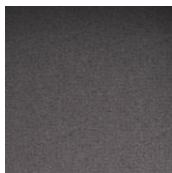
BRICK



PUTTY



WHITE



MICACEO



2024
Collection Open Air

MERIDIANI
New colors

ROPES: NEW COLORS



BRICK



PUTTY



WHITE



MICACEO



POLIPROPILENE

100% RECYCLABLE

IDROPELLENTE-WATER REPELLENT

ATOSSICO ANALLERGICO - NO TOXIC HYPOALLERGENIC

According to OEKO-TEX standard 100 class

ANTIMACCHIA-STAIN RESISTENT

RESISTENZA AI RAGGI UV-RESISTANCE TO UV RAYS

EN ISO 105 B 02 "light resistance": graded 7 (Max. 8 blue scale) EN ISO 105 B 04 "weather resistance": graded 4 (Max. 5 grey scale)

INATTACABILE DA MUFFE E BATTERI-RESISTANCE TO MOLD AND BACTERIA

RESISTENTE ALL'UMIDITA'-MOISTURE RESISTANCE

ECCELLENTE RESISTENZA ALLE MACCHIE LIQUIDE-RESISTANCE TO LIQUID STAINS

including sunscreen cream: EN ISO 12720 graded 1/5 (Max. 5)

NEW COLORS OPEN AIR



TAI



sedia UNO



sedia DUE

ZOE



poltrona

ZOE WOOD



poltroncina UNO

ZOE SOFA



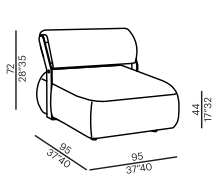
divano

NEW COLLECTION OPEN AIR

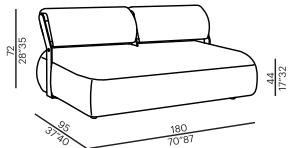




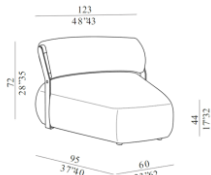
ABACO



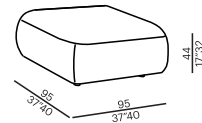
ELEMENTO 95



DIVANO 180



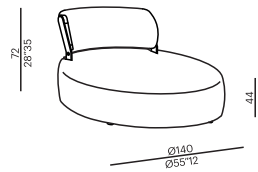
TRAPEZIUM



POUF 95

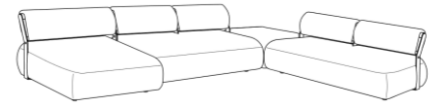


CHAISE LONGUE SQUARE



CHAISE LONGUE ROUND

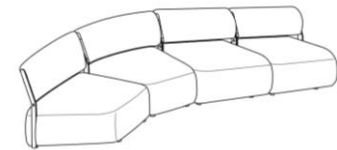
ESEMPI DI COMPOSIZIONE



2 - chaise longue SQUARE
2 - eleme nto - unit 180
1 - pouf 95



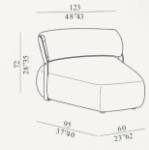
1 - chaise longue SQUARE
1 - eleme nto - unit 180



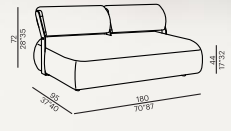
2 - eleme nto - unit TRAPEZIUM
2 - eleme nto - unit 95



CHAISE LONGUE SQUARE



TRAPEZIUM



DIVANO 180



PIPING



BRICK



PUTTY

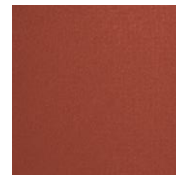


WHITE



MICACEO

STRUCTURE: COLORS



BRICK



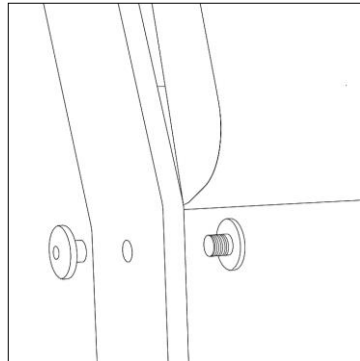
PUTTY



WHITE



MICACEO



CONNECTION DETAIL



FILLING



FILLING

The cushion filling is made of polyurethane foam and polyester fibers, materials that guarantee great comfort but that can change dimensions in time because of normal correct use. The Open Air cushion paddings are covered with a waterproof technical material case, but not of drainage foam.

2024

Collection Open Air

MERIDIANI

MATERIAL



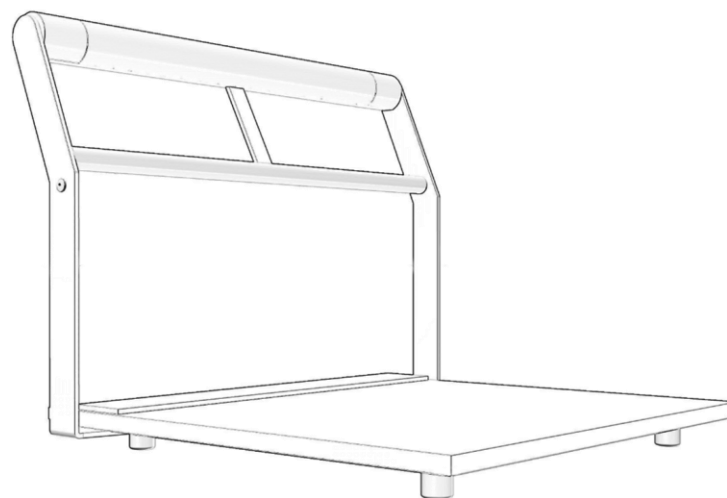
SOLID IROKO WOOD



A precious wood that grows in several central equatorial African areas, it is mainly indicated for outdoor furniture, with its strong resistance to temperature changes, humidity and weather. Its distinctive feature is the naturalness, highlighted by colour variations, shades and original veins. These are not to be considered faults, rather distinctive features that determine the uniqueness and natural beauty of the material.

The exposure to atmospheric agents can gradually create a silver-grey patina on the wood surface, the result of a natural maturation process of the material.

Our Iroko is treated with a pigmented varnish in order to even the surface from possible colour variations. This treatment adds a waterproof coating that also protects against color changes and mould. This particular coating protects the furniture against indirect exposure to adverse weather conditions on partially-covered verandas or terraces.



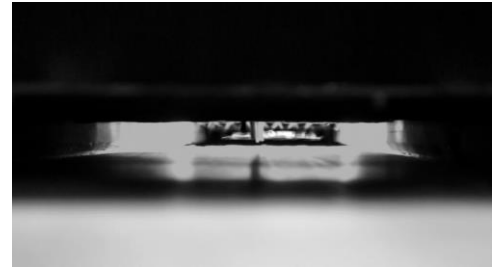
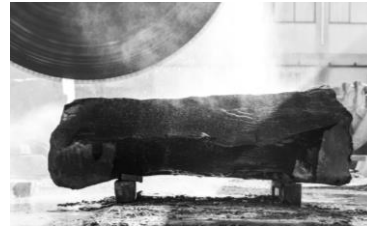
Collection Open Air
MERIDIANI
MATERIAL



LAVA STONE VITRIFIED



2024
Collection Open Air
MERIDIANI
NEW
MATERIAL



E' pietra lavica naturale estratta dalle pendici dell'Etna e trattata col fuoco secondo un nuovo concept di marcato contenuto tecnico ed estetico.

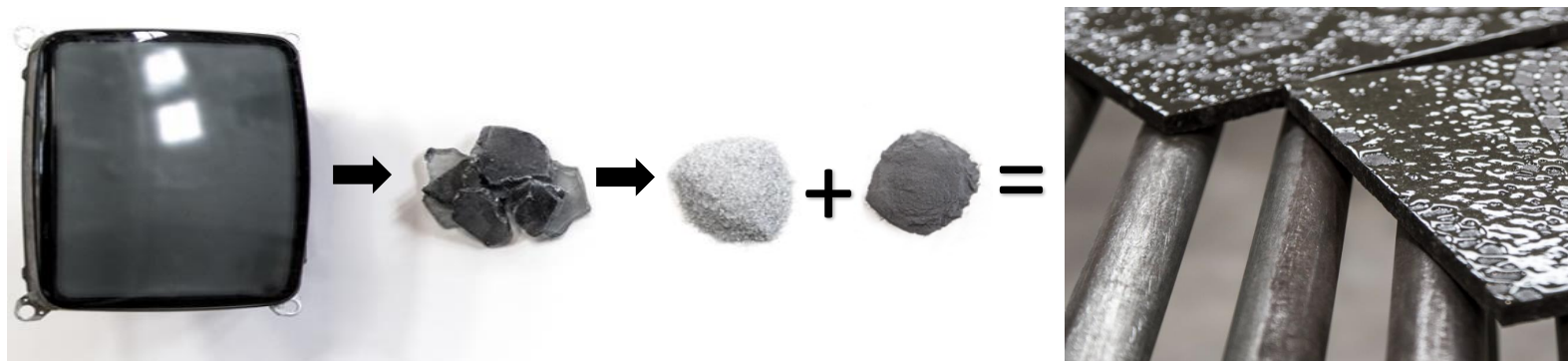
La pietra lavica di Nerosicilia viene estratta alle pendici dell'Etna da una colata antica, risalente al 1600, meticolosamente selezionata in blocchi che vengono tagliati e lavorati in forni speciali brevettati ad hoc. Un lungo e laborioso processo porta la materia ad alte temperature, consentendo di ottenere, in base ai diversi gradi di cottura, differenti ed esclusive finiture che, di anno in anno, grazie alla collaborazione con diversi designer internazionali, vengono plasmate e tradotte in nuove visioni di stile.

It's natural lava stone extracted from the slopes of Etna and treated with fire according to a new concept of marked technical and aesthetic content.

The lava stone is extracted on the slopes of Etna from an ancient flow, dating back to 1600, meticulously selected in blocks which are cut and processed in special patented ovens ad hoc. A long and laborious process brings the material to high temperatures, allowing to obtain, based on the different degrees of firing, different and exclusive finishes.

PIANI IN PIETRA LAVICA VETRIFICATA

TOPS IN LAVA STONE VETRIFIED



I colori delle superfici sono realizzati con il recupero del vetro dei monitor TV e PC dismessi. Attraverso un processo di frantumazione e macinazione del vetro, otteniamo la materia prima dei nostri decori e della colorazione a campo pieno delle superfici.

The colors of the surfaces are made with the recovery of glass from disused TV and PC monitors. Through a process of crushing and grinding the glass, we obtain the raw material for our decorations and the full-field coloring of the surfaces.

La pietra lavica vetrificata dopo questo trattamento risulta omogenea, liscia e lucida. Tale processo ne migliora le caratteristiche tecniche.

The vitrified lava stone after this treatment is homogeneous, smooth and shiny. This process improves their technical features.

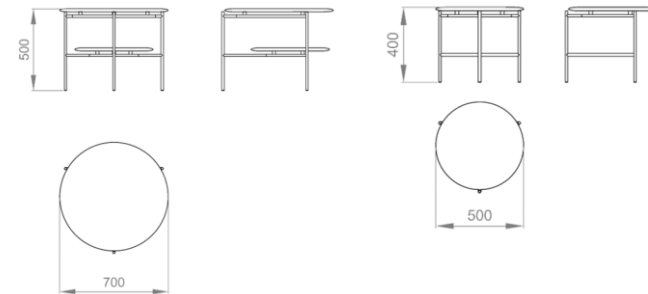


RED

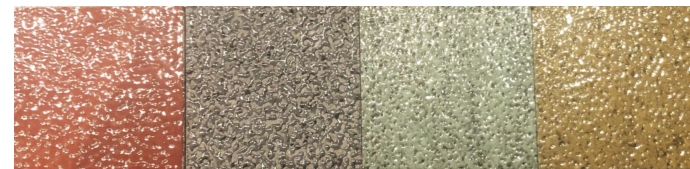
GREY

ASPARAGUS

YELLOW



TOP IN LAVA STONE VETRIFIED



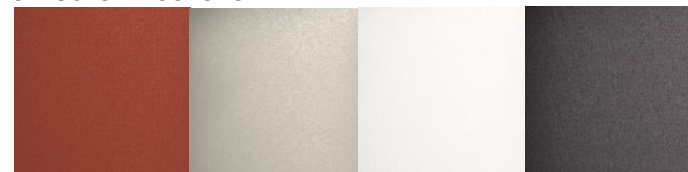
RED

GREY

ASPARAGUS

YELLOW

STRUCTURE: COLORS

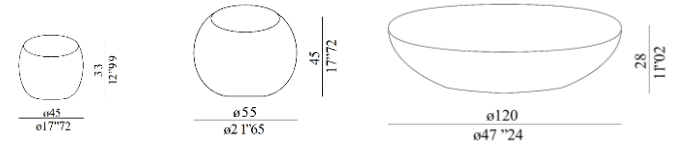


BRICK

PUTTY

WHITE

MICACEO



TB1

TB2

TB5

TOP IN LAVA STONE VETRIFIED



RED

GREY

ASPARAGUS

YELLOW

LACCATO OPACO

