

COMPOSIZIONE: 37% LINO 63% COTONE  
COMPOSITION: 37% FLAX 63% COTTON  
COMPOSITION: 37% LIN 63% COTON  
ZUSAMMENSTELLUNG: 37% LEIN 63% BAUMWOLLE  
COMPOSICION: 37% LINO 63% ALGODON



# Vale

Cat. 20

# Vale

Cat. 20



24805



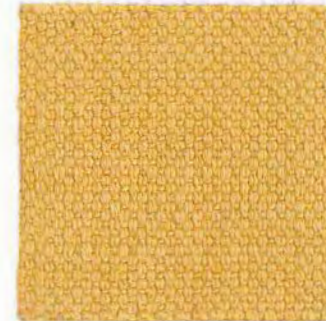
24802



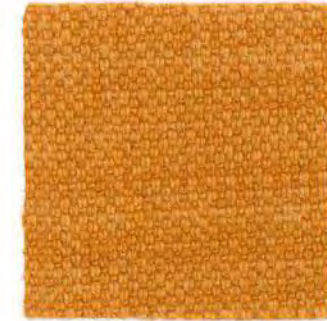
24801



24830



24813



24817



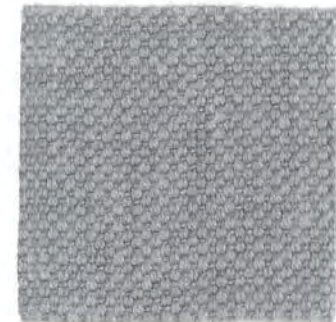
24834



24829



24856



24804



24810



24837



24815



24842



24827



24820



24806



24803



24835



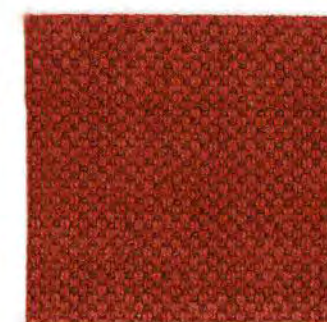
24818



24840



24848



24838



24844



24816

**zanotta** SPA

I-20834 NOVA MILANESE VIA VITTORIO VENETO 57 TEL +39.0362 4981 FAX +39.0362 451038 WWW.ZANOTTA.IT

# zanotta:

# valente

## cat. 20

COMPOSIZIONE: 53% COTONE 37% LANA 10% POLIAMMIDE

COMPOSITION: 53% COTTON 37% WOOL 10% POLYAMIDE

COMPOSITION: 53% COTON 37% LAINE 10% POLYAMIDE

ZUSAMMENSTELLUNG: 53% BAUMWOLLE 37% WOLLE 10% POLYAMID

COMPOSICION: 53% ALGODON 37% LANA 10% POLIAMIDA

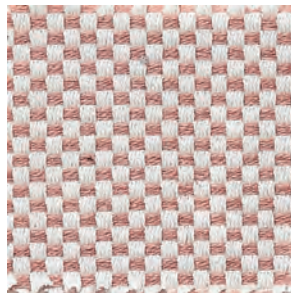


TEL. +39.0362 4981 FAX +39.0362 498900  
WWW.ZANOTTA.IT

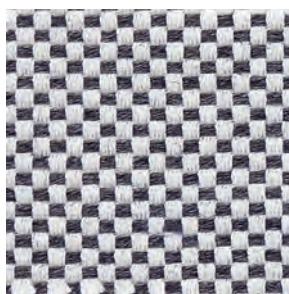
ZANOTTA SPA VIA VITTORIO VENETO 57  
20834 NOVA MILANESE MB - ITALIA



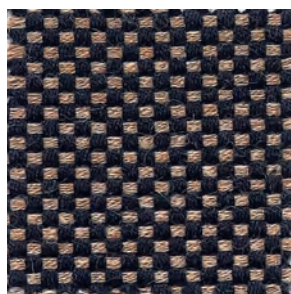
27953



27907



27931



27936



27904



27914



27918



27940



27941



27959

# zanotta:

# viburno

## cat. 20

COMPOSIZIONE: 58% COTONE RICICLATO\* 25% POLIESTERE 17% ACRILICO  
COMPOSITION: 58% RECYCLED COTTON\* 25% POLYESTER 17% ACRYLIC  
COMPOSITION: 58% COTON RECYCLÉ\* 25% POLYESTER 17% ACRYLIQUE  
ZUSAMMENSTELLUNG: 58% WIEDERVERARBEITETE BAUMWOLLE\* 25% POLYESTER 17% ACRYL  
COMPOSICION: 58% ALGODON RECICLADO\* 25% POLIÉSTER 17% ACRILICO

\* cotton recycled yarns compliant with Global Recycled Standard v4.0 (GRS)



HEIGHT: **140 cm**

LIGHT RESISTANCE: **5 / 6**

ABRASION: **100.000**

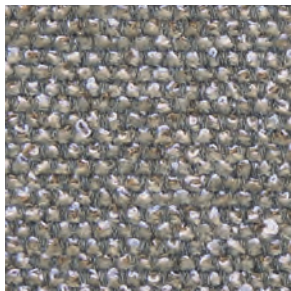
WEIGHT: **1230 g / ml**

SHRINKAGE: **-0,5%**

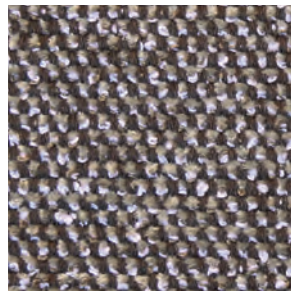
PILING: **4 / 5**

TEL. +39.0362.4981  
WWW.ZANOTTA.IT

ZANOTTA SPA VIA VITTORIO VENETO 57  
20834 NOVA MILANESE MB - ITALIA



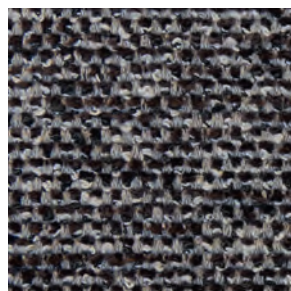
28004



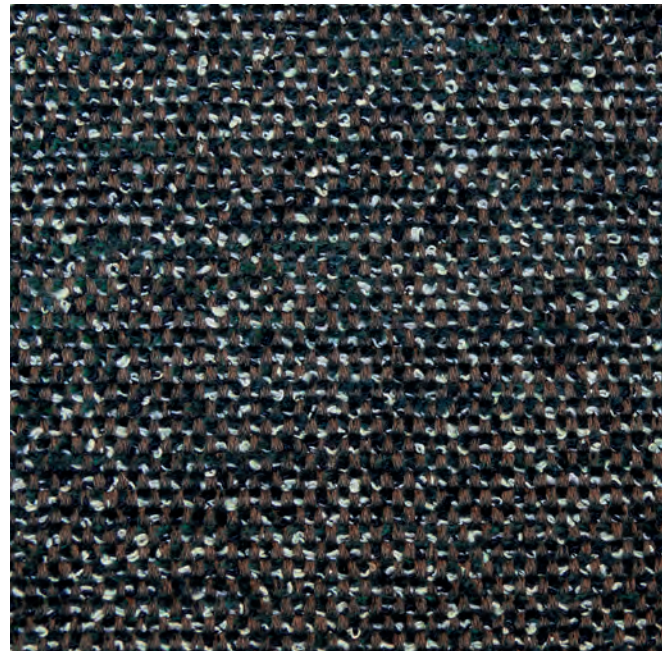
28007



28017



28056



28054

COMPOSIZIONE: 61% VISCOSA 20% LINO 8% POLIESTERE 6% COTONE 3% ACRILICA 2% POLIAMMIDE

COMPOSITION: 61% VISCOSE 20% FLAX 8% POLYESTER 6% COTTON 3% ACRYLIC 2% POLYAMIDE

COMPOSITION: 61% VISCOSE 20% LIN 8% POLYESTER 6% COTON 3% ACRYLIQUE 2% POLYAMIDE

ZUSAMMENSTELLUNG: 61% VISKOSA 20% LEINEN 8% POLYESTER 6% BAUMWOLLE 3% ACRYL 2% POLYAMID

COMPOSICION: 61% VISCOSA 20% LINO 8% POLIÉSTER 6% ALGODON 3% ACRILICO 2% POLIAMIDA



TEL. +39.0362 4981 FAX +39.0362 498900  
WWW.ZANOTTA.IT

ZANOTTA SPA VIA VITTORIO VENETO 57  
20834 NOVA MILANESE MB - ITALIA



27801



27803



27840



27853



27802



27824



27805



27804



27841



27826

COMPOSIZIONE: 33% ACRILICO 24% VISCOSA 23% COTONE 12% LINO 8% POLIESTERE  
COMPOSITION: 33% ACRYLIC 24% VISCOSE 23% COTTON 12% FLAX 8% POLYESTER  
COMPOSITION: 33% ACRYLIQUE 24% VISCOSE 23% COTON 12% LIN 8% POLYESTER  
ZUSAMMENSTELLUNG: 33% ACRYL 24% VISKOSE 23% BAUMWOLLE 12% LEINEN 8% POLYESTER  
COMPOSICION: 33% ACRILICO 24% VISCOSA 23% ALGODON 12% LINO 8% POLIÉSTER



HEIGHT: 140 cm

LIGHT RESISTANCE: 4 / 5

ABRASION: 25,000

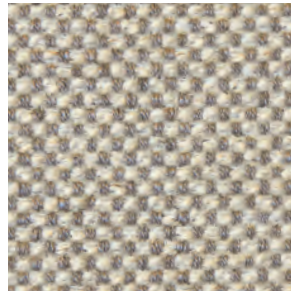
WEIGHT: 870 g / ml

SHRINKAGE: -2%

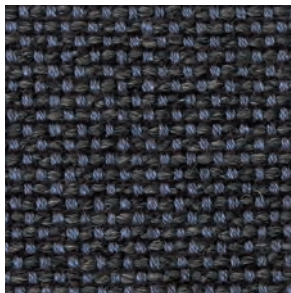
PILING: 4



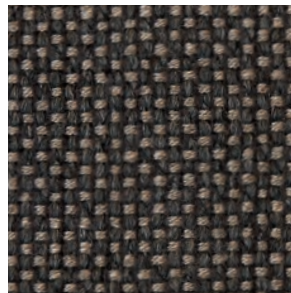
28101



28135



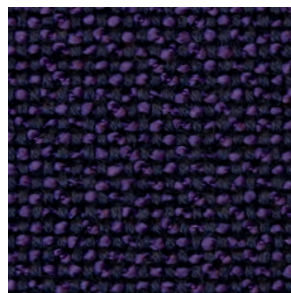
28157



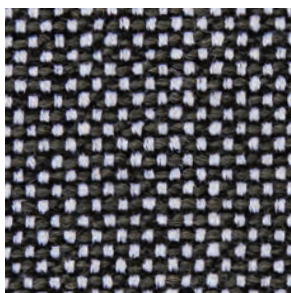
28117



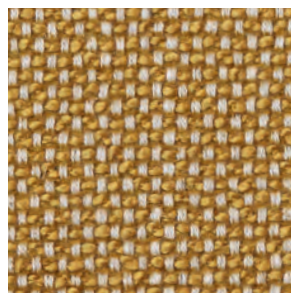
28121



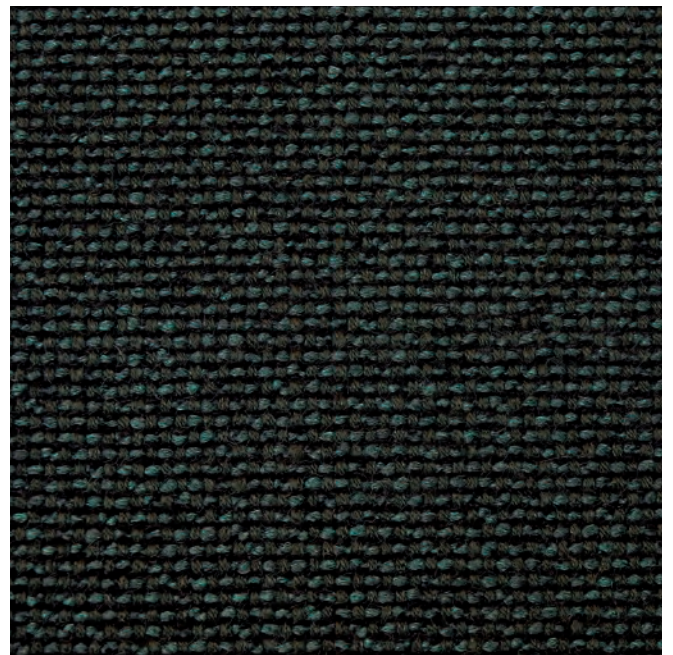
28120



28116



28115



28148

COMPOSIZIONE: 39% VISCOSA 24% ACRILICA 19% COTONE 13% POLIESTERE 5% LINO

COMPOSITION: 39% VISCOSE 24% ACRYLIC 19% COTTON 13% POLYESTERE 5% FLAX

COMPOSITION: 39% VISCOSE 24% ACRYLIQUE 19% COTON 13% POLYESTER 5% LIN

ZUSAMMENSTELLUNG: 39% VISKOSE 24% AKRYL 19% BAUMWOLLE 13% POLYESTER 5% LEINEN

COMPOSICION: 39% VISCOSA 24% ACRILICO 19% ALGODON 13% POLIESTER 5% LINO



27702



27756



27703



27718



27740



27747



27704



27705



27706

COMPOSIZIONE: 81% PVC 19% POLIESTERE - RESISTENTE AL FUOCO  
COMPOSITION: 81% PVC 19% POLYESTER - FLAME RETARDANT  
COMPOSITION: 81% PVC 19% POLYESTER - FEU ENDURANCE  
ZUSAMMENSTELLUNG: 81% PVC 19% POLYESTER - FEUERBESTÄNDIG  
COMPOSICION: 81% PVC 19% POLIÉSTER - RESISTIENTE AL FUEGO



27505



27501



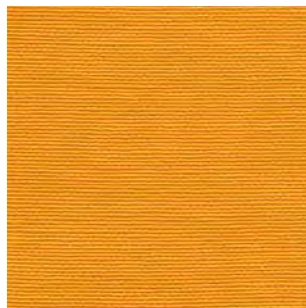
27506



27547



27557



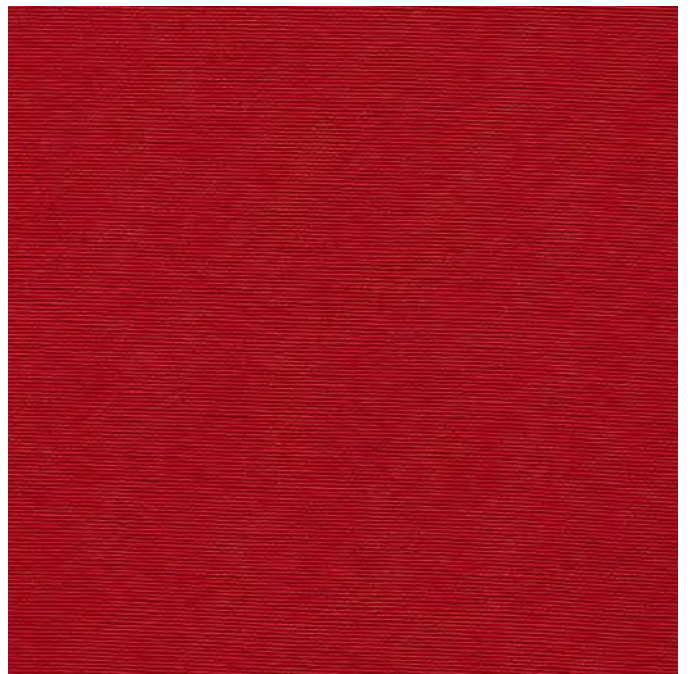
27514



27552



27517



27527

# zanotta:

# ecofire cat. 30

COMPOSIZIONE: 71% PVC 27% COTONE 2% POLIURETANO - RESISTENTE AL FUOCO

COMPOSITION: 71% PVC 27% COTTON 2% POLYURETHANE - FLAME RETARDANT

COMPOSITION: 71% PVC 27% COTON 2% POLYURÉTHANE - FEU ENDURANCE

ZUSAMMENSTELLUNG: 71% PVC 27% BAUMWOLLE 2% POLYHURETHAN - FEUERBESTÄNDIG

COMPOSICION: 71% PVC 27% ALGODÓN 2% POLIURETANO - RESISTIENTE AL FUEGO



TEL. +39.0362.4981 FAX +39.0362.451038  
WWW.ZANOTTA.IT

ZANOTTA SPA VIA VITTORIO VENETO 57  
20834 NOVA MILANESE MB - ITALIA



31601



31627



31641



31603



31602



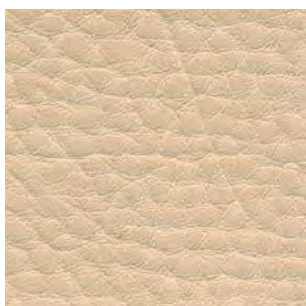
31629



31626



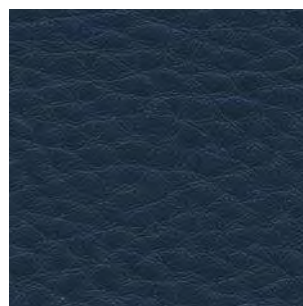
31605



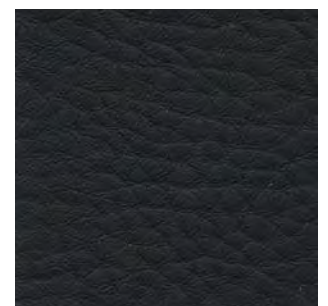
31631



31616



31657



31606



# zanotta:

# taiga

## cat. 30

COMPOSIZIONE: 35% ACRILICO 19% VISCOSA 16% LANA VERGINE 12% POLIESTERE 10% LINO 8% COTONE

COMPOSITION: 35% ACRYLIC 19% VISCOSE 16% PURE WOOL 12% POLYESTER 10% FLAX 8% COTTON

COMPOSITION: 35% ACRYLIQUE 19% VISCOSE 16% LAINE VIERGE 12% POLYESTER 10% LIN 8% COTON

ZUSAMMENSTELLUNG: 35% ACRYL 19% VISKOSE 16% REINE WOLLE 12% POLYESTER 10% LEINEN 8% BAUMWOLLE

COMPOSICION: 35% ACRILICO 19% VISCOSA 16% LANA VIRGEN 12% POLIESTER 10% LINO 8% ALGODON



HEIGHT: 140 cm

LIGHT RESISTANCE: 5 / 6

ABRASION: 40 Q00

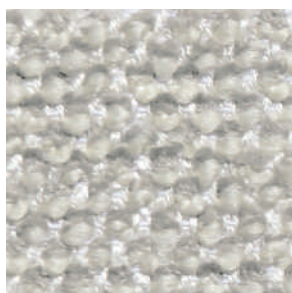
WEIGHT: 1050 g / ml

SHRINKAGE: +/- 2 %

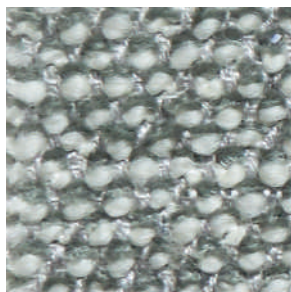
PILING: 4



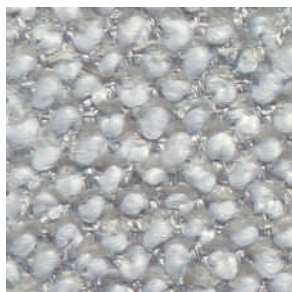
32501



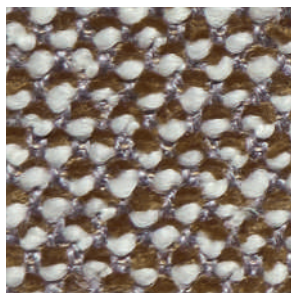
32503



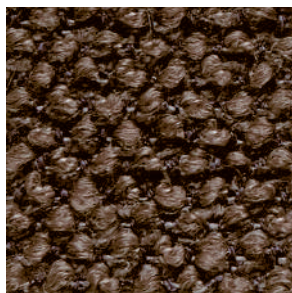
32544



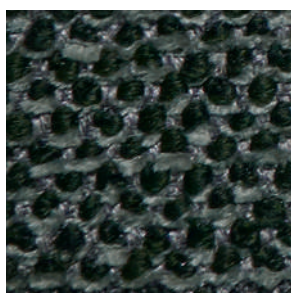
32504



32516



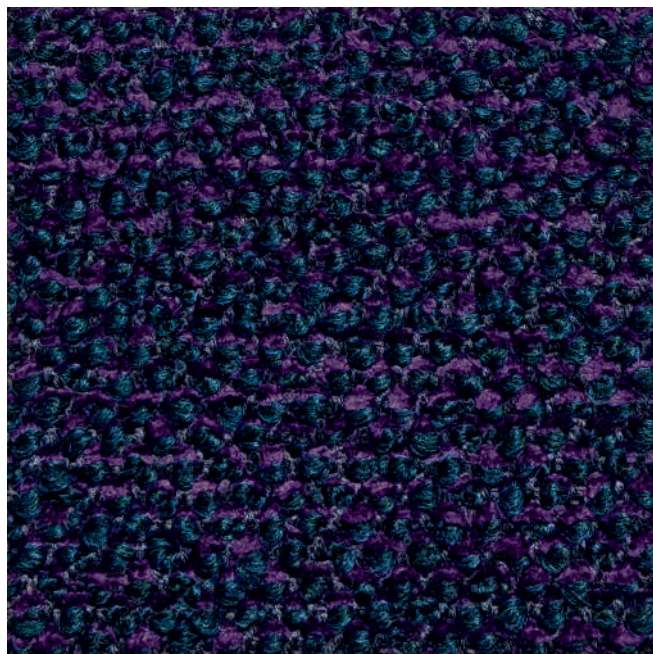
32514



32542



32554



32535

TEL. +39.0362 4981  
WWW.ZANOTTA.IT

ZANOTTA SPA VIA VITTORIO VENETO 57  
20834 NOVA MILANESE MB - ITALIA

COMPOSIZIONE: 100% POLIPROPILENE ADATTO PER USO ESTERNO  
COMPOSITION: 100% POLYPROPYLEN SUITABLE FOR OUTDOOR USE  
COMPOSITION: 100% POLYPROPYLEN INDIQUÉ POUR UN USAGE EXTÉRIEUR  
ZUSAMMENSTELLUNG: 100% POLYPROPYLEN PASSEND FÜRS FREIE  
COMPOSICION: 100% POLIPROPILENO INDICADO PARA USO EXTERIOR

# Talasso



Cat. 30



26003



26093



26030



26090



26031



26091



26075



26098



26007



26097



26016



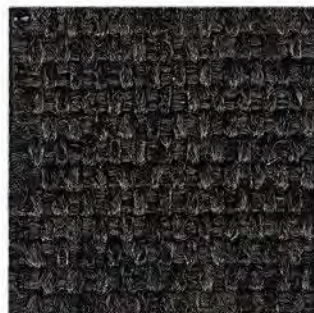
26096



26004



26094



26005



26095

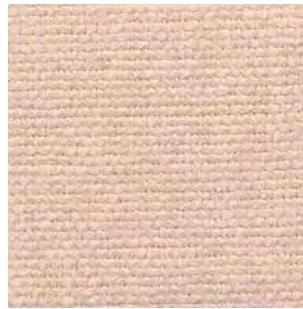
COMPOSIZIONE: 72% LINO 14% COTONE 14% VISCOSA  
COMPOSITION: 72% FLAX 14% COTTON 14% VISCOSE  
COMPOSITION: 72% LIN 14% COTON 14% VISCOSE  
ZUSAMMENSTELLUNG: 72% LEINEN 14% BAUMWOLLE 14% VISKOSE  
COMPOSICION: 72% LINO 14% ALGODON 14% VISCOSA



27601



27617



27625



27642



27602



27654



27640



27644



27603



27614



27656



27627



27641



27616



27605



27606

# zanotta:

COMPOSIZIONE: 75% VISCOSA 14% COTONE 11% LINO

COMPOSITION: 75% VISCOSE 14% COTTON 11% FLAX

COMPOSITION: 75% VISCOSE 14% COTON 11% LIN

ZUSAMMENSTELLUNG: 75% VISKOSE 14% BAUMWOLLE 11% LEINEN

COMPOSICION: 75% VISCOSA 14% ALGODÓN 11% LINO

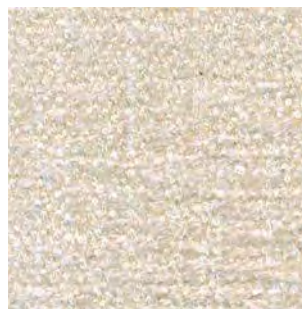
# tatto

## cat. 30



TEL. +39.0362.4981 FAX +39.0362.451038  
WWW.ZANOTTA.IT

ZANOTTA SPA VIA VITTORIO VENETO 57  
20834 NOVA MILANESE MB - ITALIA



26821



26804



26831



26803



26818



26850



26847



26816

COMPOSIZIONE: 100% POLIESTERE - RESISTENTE AL FUOCO  
COMPOSITION: 100% POLYESTER - FLAME RETARDANT  
COMPOSITION: 100% POLYESTER - FEU ENDURANCE  
ZUSAMMENSTELLUNG: 100% POLYESTER - FEUERBESTÄNDIG  
COMPOSICION: 100% POLIÉSTER - RESISTIENTE AL FUEGO



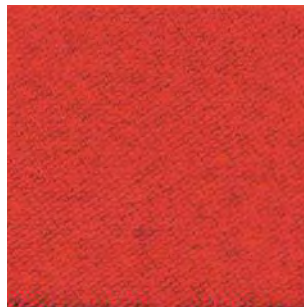
26901



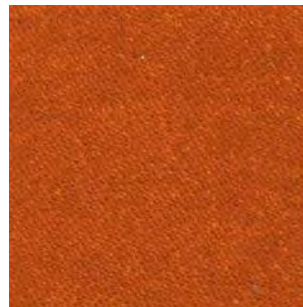
26927



26904



26917



26926



26929



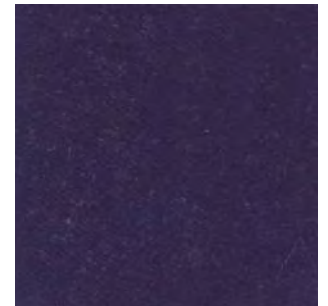
26931



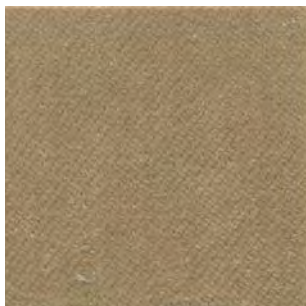
26943



26942



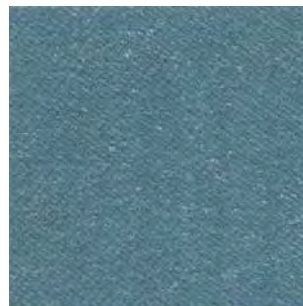
26944



26935



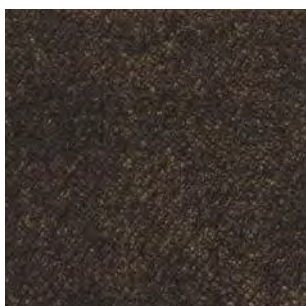
26908



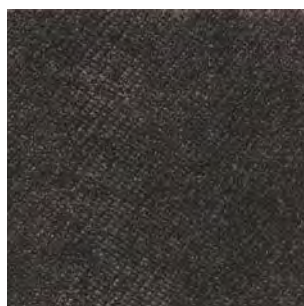
26952



26940



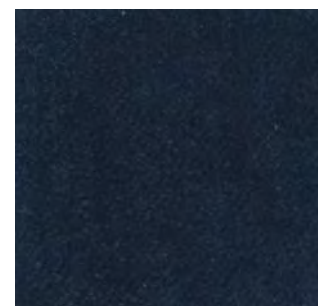
26936



26905



26906



26957

# zanotta:

COMPOSIZIONE: 52% COTONE 15% VISCOSA 25% POLIESTERE 8% LINO

COMPOSITION: 52% COTTON 15% VISCOSE 25% POLYESTER 8% FLAX

COMPOSITION: 52% COTON 15% VISCOSE 25% POLYESTER 8% LIN

ZUSAMMENSTELLUNG: 52% BAUMWOLLE 15% VISKOSE 25% POLYESTER 8% LEINEN

COMPOSICION: 52% ALGODON 15% VISCOSA 25% POLIÉSTER 8% LINO

# tegola

## cat. 30



TEL. +39.0362.4981 FAX +39.0362.498900  
WWW.ZANOTTA.IT

ZANOTTA SPA VIA VITTORIO VENETO 57  
20834 NOVA MILANESE MB - ITALIA



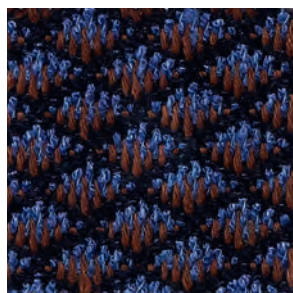
32353



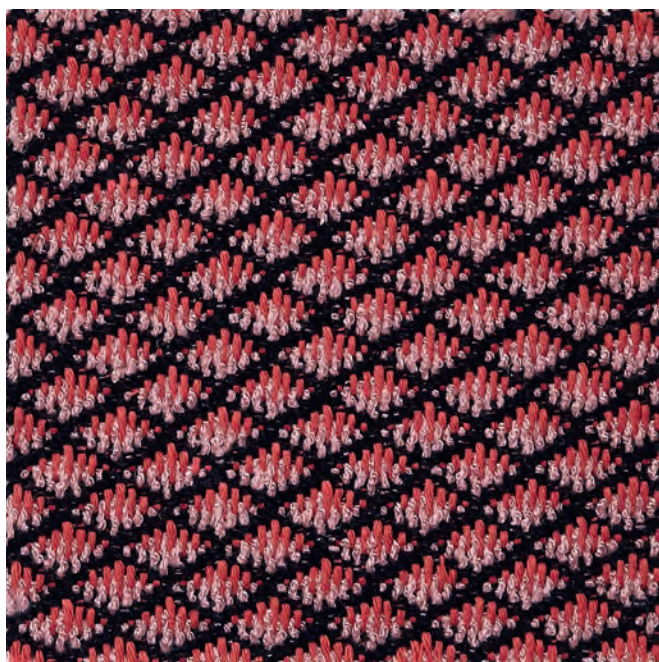
32315



32348



32359



32326

# zanotta:

COMPOSIZIONE: **100% COTONE**  
COMPOSITION: **100% COTTON**  
COMPOSITION: **100% COTON**  
ZUSAMMENSTELLUNG: **100% BAUMWOLLE**  
COMPOSICION: **100% ALGODON**

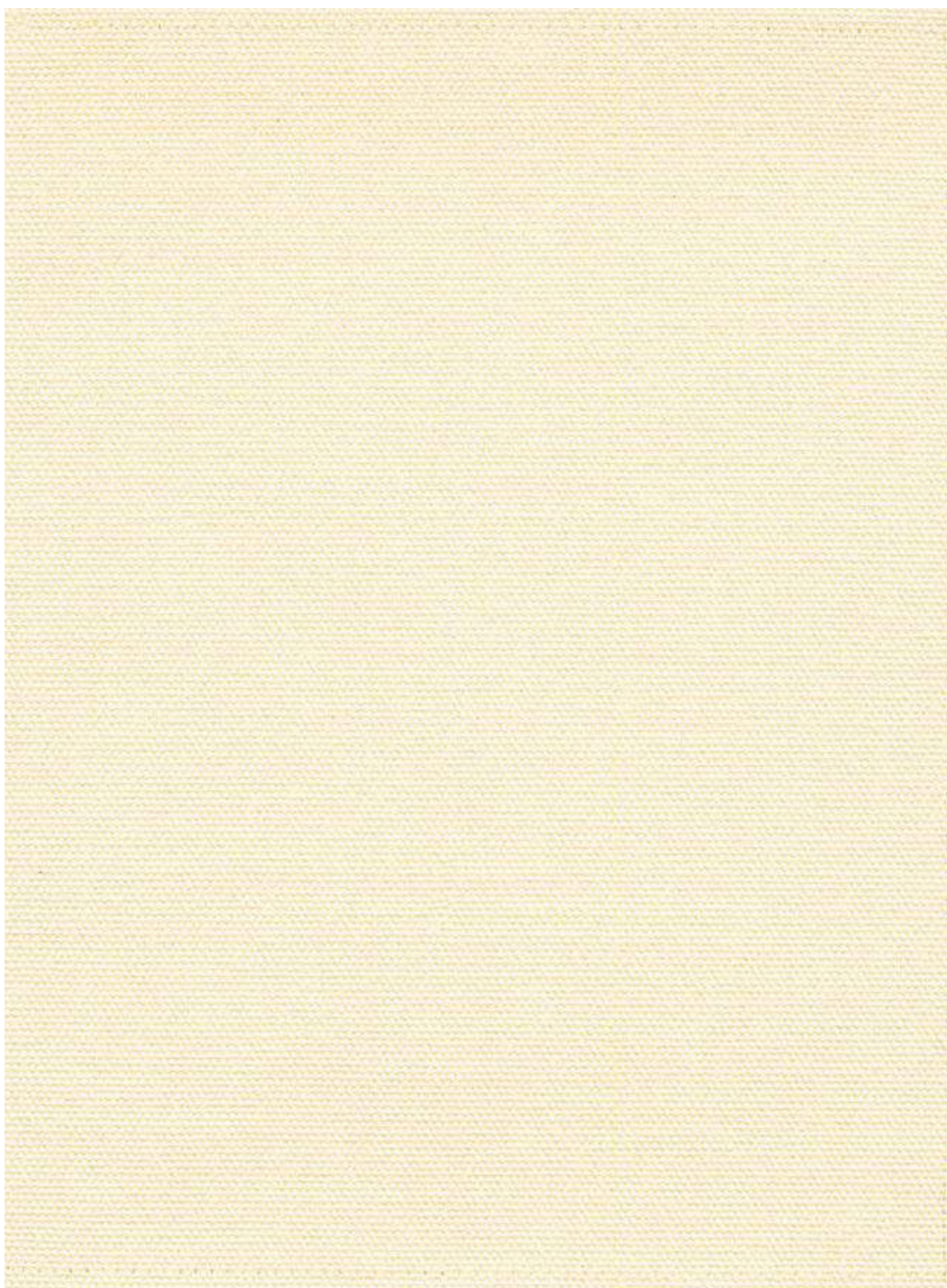
# telastrong

## cat. 30



TEL. +39.0362.4981 FAX +39.0362.498900  
WWW.ZANOTTA.IT

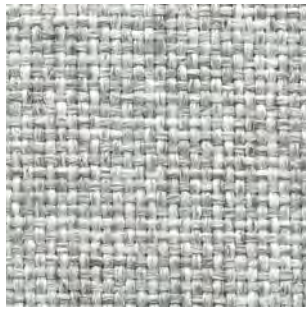
ZANOTTA SPA VIA VITTORIO VENETO 57  
20834 NOVA MILANESE MB - ITALIA



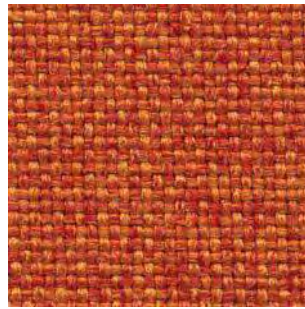
COMPOSIZIONE: 100% POLIESTERE RESISTENTE AL FUOCO  
COMPOSITION: 100% POLYESTER FLAME RETARDANT  
COMPOSITION: 100% POLYESTER FEU ENDURANCE  
ZUSAMMENSTELLUNG: 100% POLYESTER FEUERBESTÄNDIG  
COMPOSICION: 100% POLIÉSTER RESISTIENTE AL FUEGO



30602



30654



30617



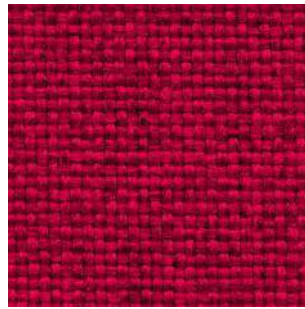
30614



30607



30655



30628



30629



30642



30604



30657



30658



30638



30605



30673



30606

TEL. +39.0362.4981 FAX +39.0362.498900  
WWW.ZANOTTA.IT

ZANOTTA SPA VIA VITTORIO VENETO 57  
20834 NOVA MILANESE MB - ITALIA



COMPOSIZIONE: 35% COTONE 41% POLIESTERE RICICLATO\* 24% COTONE RICICLATO \*  
 COMPOSITION: 35% COTTON 41% RECYCLED POLYESTER\* 24% RECYCLED COTON\*  
 COMPOSITION: 35% COTON 41% POLYESTER RECYCLE'\* 24% COTON RECYCLE'\*  
 ZUSAMMENSTELLUNG: 35% BAUMWOLLE 41% WIEDERVERARBEITETES POLYESTER\*  
 24% WIEDERVERARBEITETE BAUMWOLLE\*  
 COMPOSICION: 35% ALGODON 41% POLIESTER RECICLADO\* 24% ALGODON RECICLADO\*

## cat. 30

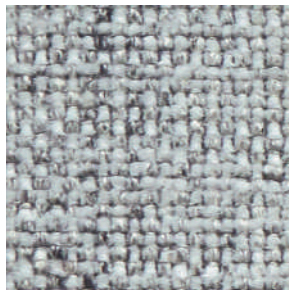


HEIGHT: <b>140 cm</b>	LIGHT RESISTANCE: <b>4</b>	ABRASION: <b>30 000</b>
WEIGHT: <b>940 g / ml</b>	SHRINKAGE: <b>- 2,5 %</b>	PILING: <b>5</b>

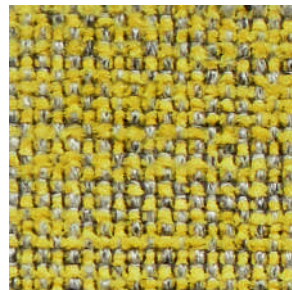
\*Pre-consumer and post-consumer recycled cotton and polyester yarns to meet social and environmental requirements at each stage of the supply chain without the use of potentially harmful chemicals.

TEL. +39.0362.4981  
WWW.ZANOTTA.IT

ZANOTTA SPA VIA VITTORIO VENETO 57  
20834 NOVA MILANESE MB - ITALIA



32601



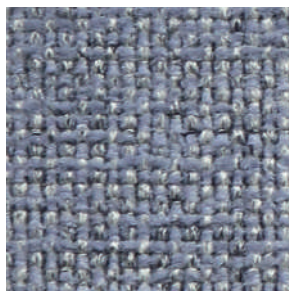
32615



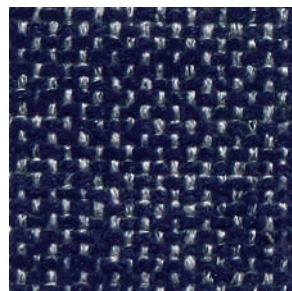
32635



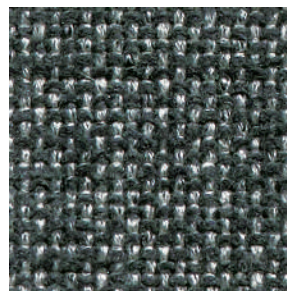
32636



32659



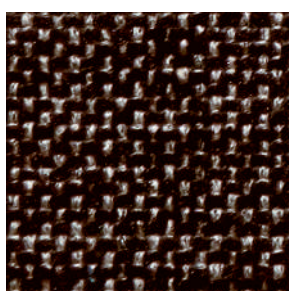
32656



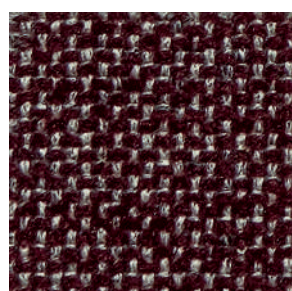
32642



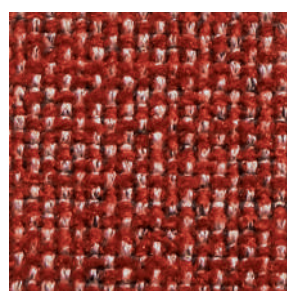
32640



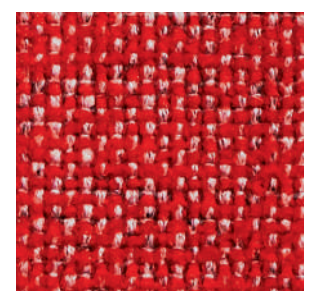
32673



32616



32630



32627

COMPOSIZIONE: 30% VISCOSA 19% LINO 14% COTONE 10% POLIESTERE 27% ACRILICO

COMPOSITION: 30% VISCOSE 19% FLAX 14% COTTON 10% POLYESTER 27% ACRYLIC

COMPOSITION: 30% VISCOSE 19% LIN 14% COTON 10% POLYESTER 27% ACRYLIQUE

ZUSAMMENSTELLUNG: 30% VISKOSA 19% LEINEN 14% BAUMWOLLE 10% POLYESTER 27% ACRYL

COMPOSICION: 30% VISCOSA 19% LINO 14% ALGODON 10% POLIÉSTER 27% ACRILICO



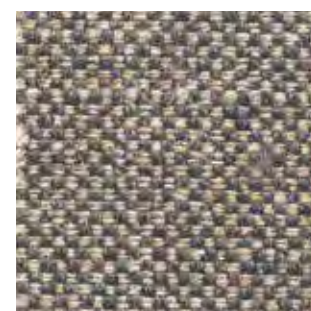
31831



31803



31853



31804



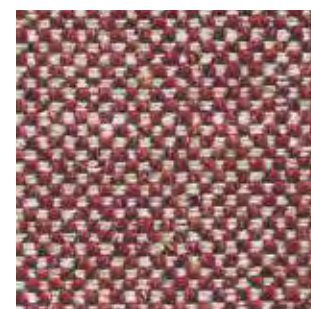
31825



31826



31827



31829



31819



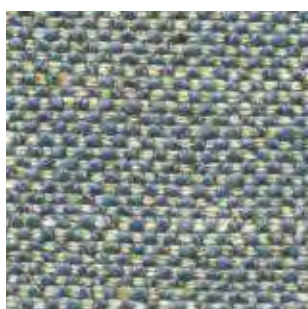
31818



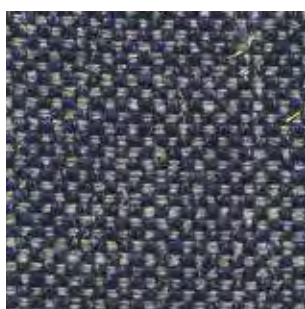
31841



31854



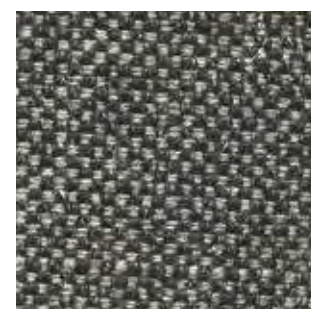
31852



31856



31816



31805

COMPOSIZIONE: 41% COTONE 36% ACRILICA 9% POLIESTERE 7% POLIAMMIDE 3% VISCOSA 2% LANA 2% LINO

COMPOSITION: 41% COTTON 36% ACRYLIC 9% POLYESTER 7% POLYAMIDE 3% VISCOSE 2% WOOL 2% FLAX

COMPOSITION: 41% COTON 36% ACRYLIQUE 9% POLYESTER 7% POLYAMIDE 3% VISCOSE 2% LAINE 2% LIN

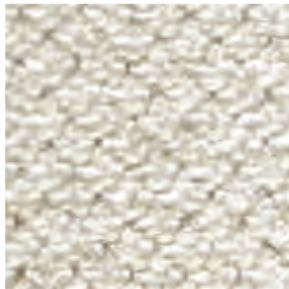
ZUSAMMENSTELLUNG: 41% BAUMWOLLE 36% ACRYL 9% POLYESTER 7% POLYAMID 3% VISKOSE 2% WOLLE 2% LEINEN

COMPOSICION: 41% ALGODON 36% ACRILICO 9% POLIÉSTER 7% POLIAMIDA 3% VISCOSA 2% LANA 2% LINO



TEL. +39.0362.4981  
FAX +39.0362.498900  
WWW.ZANOTTA.IT

ZANOTTA SPA VIA VITTORIO VENETO 57  
20834 NOVA MILANESE MB - ITALIA



32001



32030



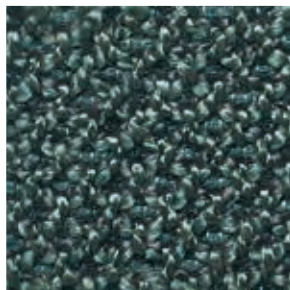
32031



32004



32003



32005



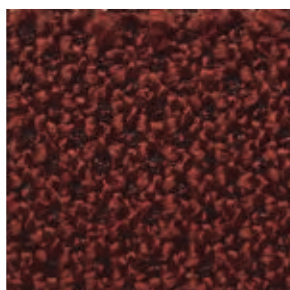
32041



32015



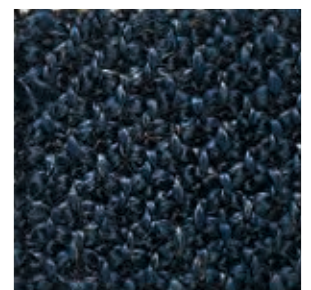
32017



32027



32059



32052

COMPOSIZIONE: 50% COTONE 33% VISCOSA 17% LINO  
COMPOSITION: 50% COTTON 33% VISCOSE 17% FLAX  
COMPOSITION: 50% COTON 33% VISCOSE 17% LIN  
ZUSAMMENSTELLUNG: 50% BAUMWOLLE 33% VISKOSE 17% LEINEN  
COMPOSICION: 50% ALGODON 33% VISCOSA 17% LINO

# Toce



Cat. 30



26503



26593



26504



26530



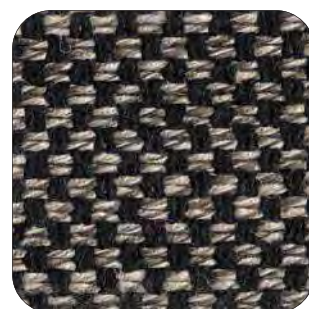
26505



26557



26556



26551

# zanotta:

# top cat. 30

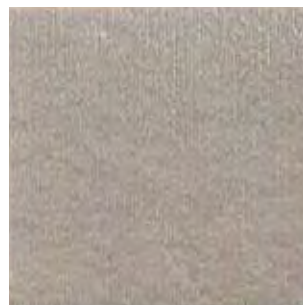
COMPOSIZIONE: 100% COTONE  
COMPOSITION: 100% COTTON  
COMPOSITION: 100% COTON  
ZUSAMMENSTELLUNG: 100% BAUMWOLLE  
COMPOSICION: 100% ALGODON



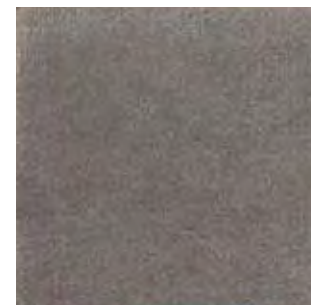
31902



31914



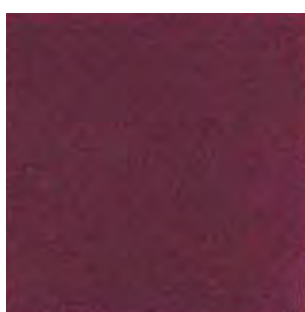
31954



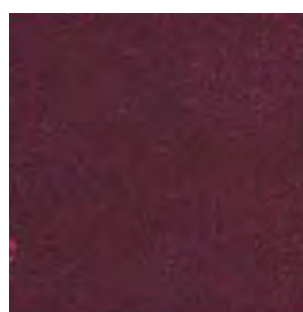
31903



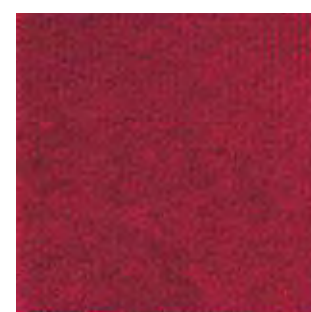
31923



31925



31929



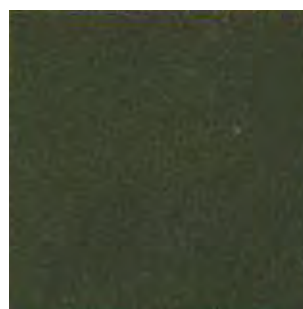
31927



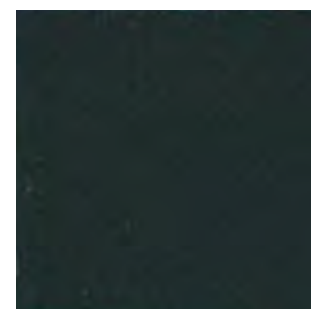
31937



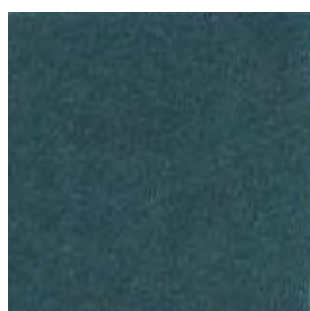
31918



31946



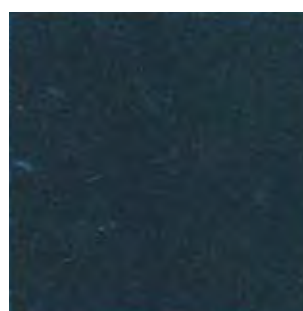
31947



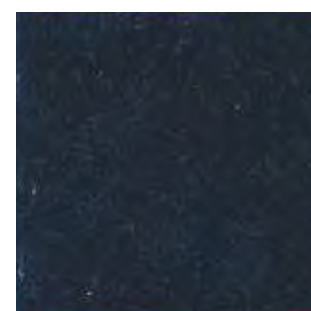
31952



31955



31956



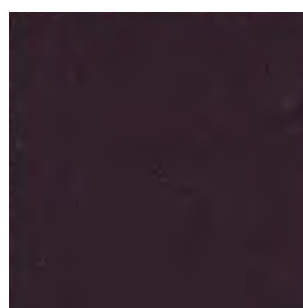
31957



31904



31905



31920



31906

TEL. +39.0362 4981 FAX +39.0362 498900  
WWW.ZANOTTA.IT

ZANOTTA SPA VIA VITTORIO VENETO 57  
20834 NOVA MILANESE MB - ITALIA

# zanotta:

# trama

## cat. 30

COMPOSIZIONE: 72% LINO 15% COTONE 9% VISCOSA 4% POLIAMMIDE  
COMPOSITION: 72% FLAX 15% COTTON 9% VISCOSE 4% POLYAMIDE  
COMPOSITION: 72% LIN 15% COTON 9% VISCOSE 4% POLYAMIDE  
ZUSAMMENSTELLUNG: 72% LEINEN 15% BAUMWOLLE 9% VISKOSE 4% POLYAMID  
COMPOSICION: 72% LINO 15% ALGODON 9% VISCOSA 4% POLIAMIDA



HEIGHT: **140 cm**

LIGHT RESISTANCE: **4**

ABRASION: **20,000**

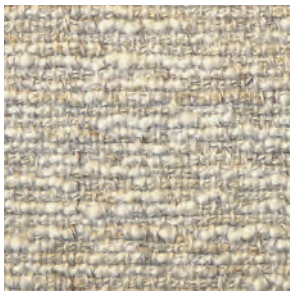
WEIGHT: **1145 g / ml**

SHRINKAGE: **-1,5%**

PILING: **3 / 4**

TEL. +39.0362.4981  
WWW.ZANOTTA.IT

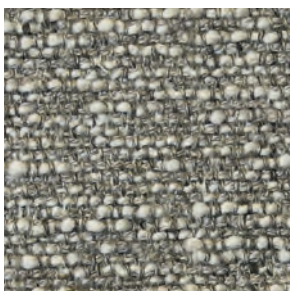
ZANOTTA SPA VIA VITTORIO VENETO 57  
20834 NOVA MILANESE MB - ITALIA



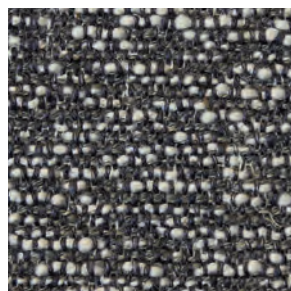
32403



32453



32404



32407



32435

# zanotta:

COMPOSIZIONE: 83% VISCOSA 17% POLIESTERE  
COMPOSITION: 83% VISCOSE 17% POLYESTER  
COMPOSITION: 83% VISCOSE 17% POLYESTER  
ZUSAMMENSTELLUNG: 83% VISKOSE 17% POLYESTER  
COMPOSICION: 83% VISCOSA 17% POLIÉSTER

# tulip

## cat. 30



TEL. +39.0362.4981 FAX +39.0362.498900  
WWW.ZANOTTA.IT

ZANOTTA SPA VIA VITTORIO VENETO 57  
20834 NOVA MILANESE MB - ITALIA



65901



65902



65903



65904

**zanotta:**

**quadrifoglio**

**cat. 40**

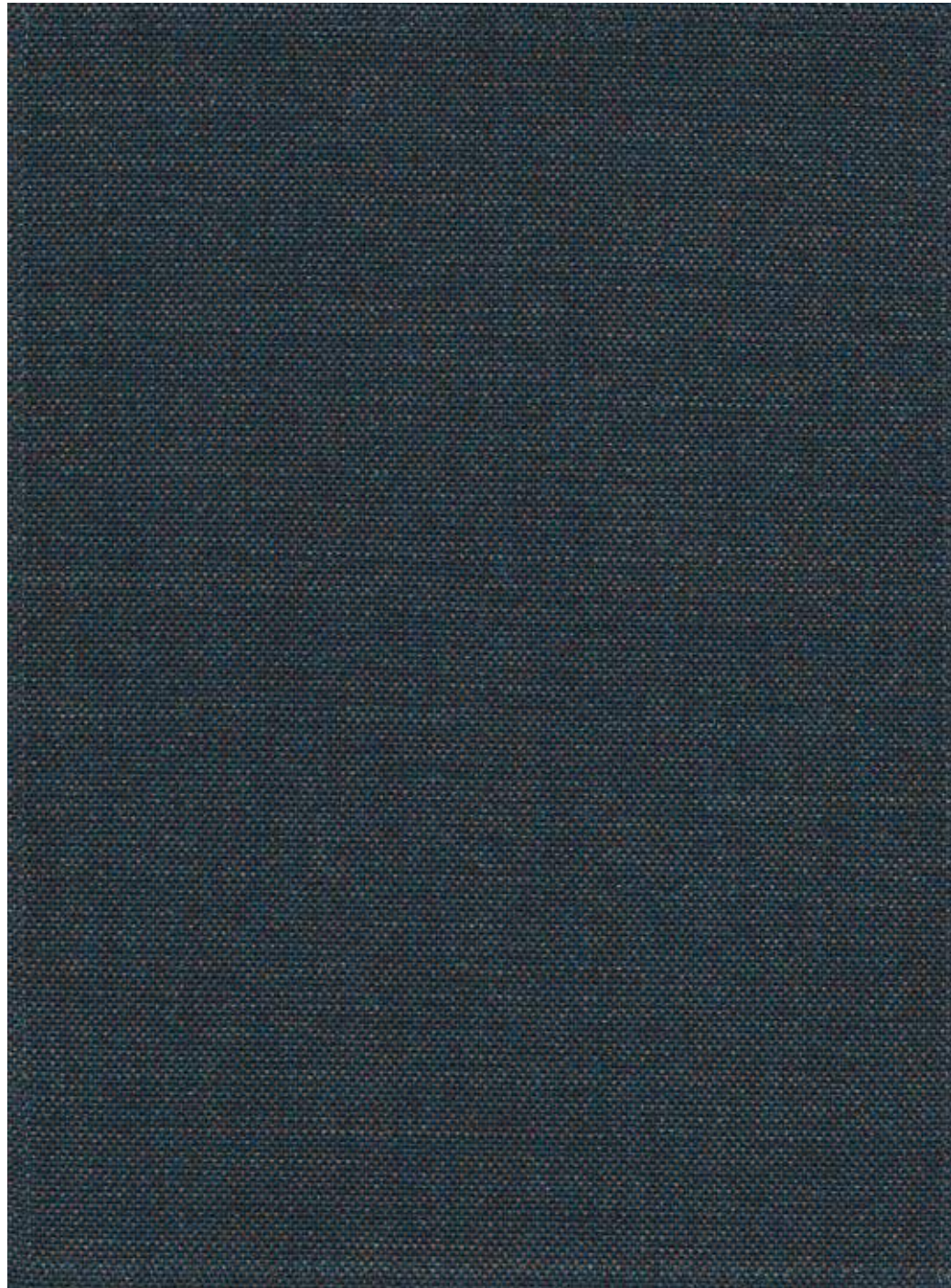
COMPOSIZIONE: 90% LANA 10% NYLON - RESISTENTE AL FUOCO

COMPOSITION: 90% WOOL 10% NYLON - FLAME RETARDANT

COMPOSITION: 90% LAINE 10% NYLON - FEU ENDURANCE

ZUSAMMENSTELLUNG: 90% WOLLE 10% NYLON - FEUERBESTÄNDIG

COMPOSICION: 90% LANA 10% NYLON - RESISTIENTE AL FUEGO

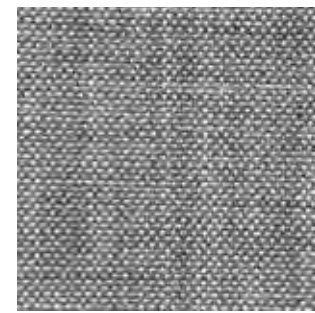


27057





27021



27004



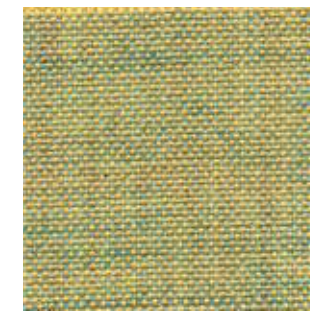
27023



27027



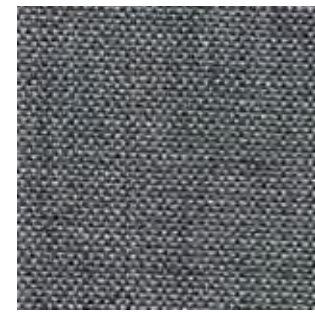
27017



27015



27030



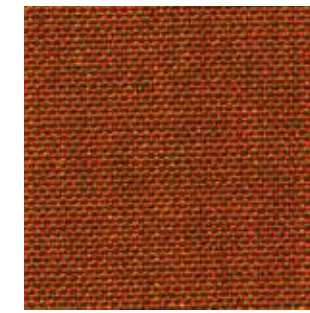
27008



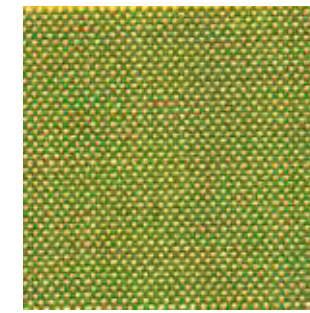
27052



27028



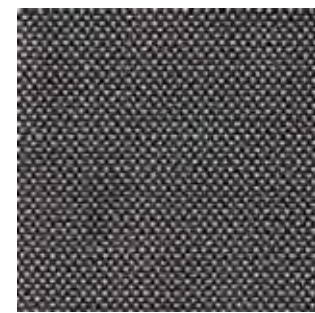
27026



27047



27014



27005



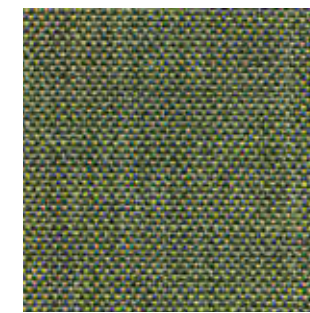
27050



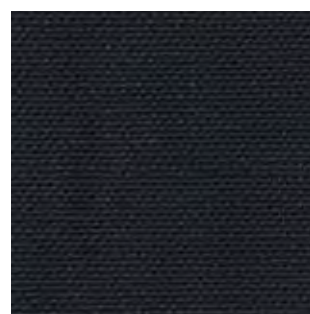
27029



27013



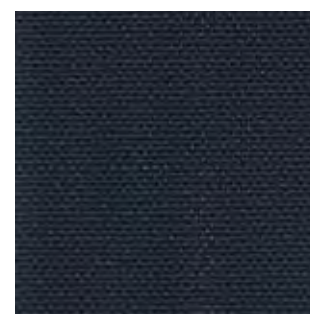
27042



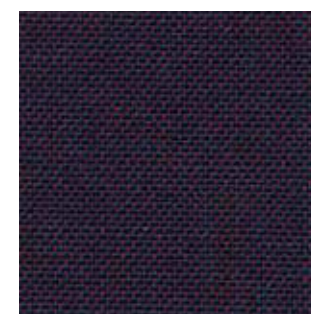
27038



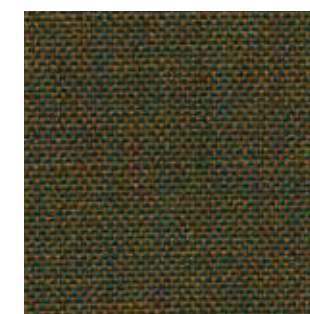
27007



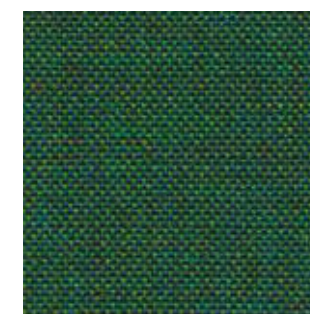
27006



27025



27049



27048

## 40304 - 40307 - 40326 - 40359 - 40358

COMPOSIZIONE: 40% LANA 35% VISCOSA 12% POLIESTERE 10% ACRILICA 3% NYLON

COMPOSITION: 40% WOOL 35% VISCOSE 12% POLYESTER 10% ACRYLIC 3% NYLON

COMPOSITION: 40% LAINE 35% VISCOSE 12% POLYESTER 10% ACRYLIQUE 3% NYLON

ZUSAMMENSTELLUNG: 40% WOLLE 35% VISKOSE 12% POLYESTER 10% ACRYL 3% NYLON

COMPOSICION: 40% LANA 35% VISCOSA 12% POLIÉSTER 10% ACRILICO 3% NYLON



## 40301 - 40303 - 40357 - 40306 - 40316

COMPOSIZIONE: 42% LANA 22% VISCOSA 16% POLIESTERE 11% COTONE 7% ACRILICA 2% NYLON

COMPOSITION: 42% WOOL 22% VISCOSE 16% POLYESTER 11% COTTON 7% ACRYLIC 2% NYLON

COMPOSITION: 42% LAINE 22% VISCOSE 16% POLYESTER 11% COTON 7% ACRYLIQUE 2% NYLON

ZUSAMMENSTELLUNG: 42% WOLLE 22% VISKOSE 16% POLYESTER 11% BAUMWOLLE 7% ACRYL 2% NYLON

COMPOSICION: 42% LANA 22% VISCOSA 16% POLIÉSTER 11% ALGODON 7% ACRILICO 2% NYLON

TEL. +39.0362.4981 FAX +39.0362.498900  
WWW.ZANOTTA.IT

ZANOTTA SPA VIA VITTORIO VENETO 57  
20834 NOVA MILANESE MB - ITALIA



40301



40304



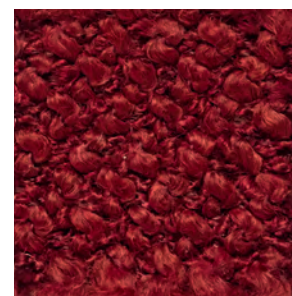
40303



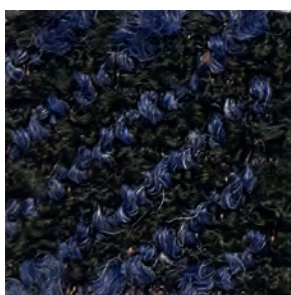
40307



40357



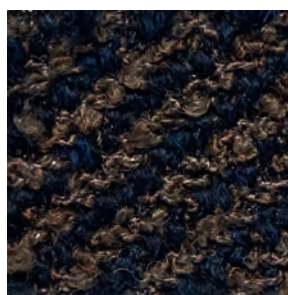
40326



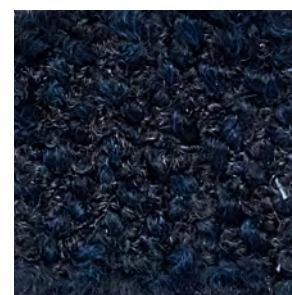
40306



40359



40316



40358

COMPOSIZIONE: 95% LANA 5% POLIAMMIDE RESISTENTE AL FUOCO

COMPOSITION: 95% WOOL 5% POLYAMIDE FLAME RETARDANT

COMPOSITION: 95% LAINE 5% POLYAMIDE FEU ENDURANCE

ZUSAMMENSTELLUNG: 95% WOLLE 5% POLYAMID FEUERBESTÄNDIG

COMPOSICION: 95% LANA 5% POLIAMIDA RESISTENTE AL FUEGO

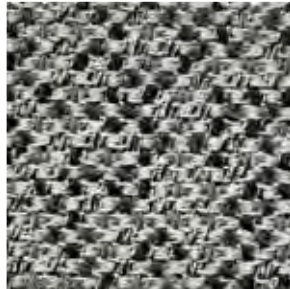


TEL. +39.0362.4981 FAX +39.0362.498900  
WWW.ZANOTTA.IT

ZANOTTA SPA VIA VITTORIO VENETO 57  
20834 NOVA MILANESE MB - ITALIA



32228



32203



32254



32215



32218



32247



32216



32205



32256



32257

# zanotta:

# ped de poule

## cat. 50

COMPOSIZIONE: 60% COTONE 25% VISCOSA 15% LINO

COMPOSITION: 60% COTTON 25% VISCOSE 15% FLAX

COMPOSITION: 60% COTON 25% VISCOSE 15% LIN

ZUSAMMENSTELLUNG: 60% BAUMWOLLE 25% VISKOSE 15% LEINEN

COMPOSICION: 60% ALGODÓN 25% VISCOSA 15% LINO



TEL. +39.0362.4981 FAX +39.0362.451038  
WWW.ZANOTTA.IT

ZANOTTA SPA VIA VITTORIO VENETO 57  
20834 NOVA MILANESE MB - ITALIA



64830



64851



64825



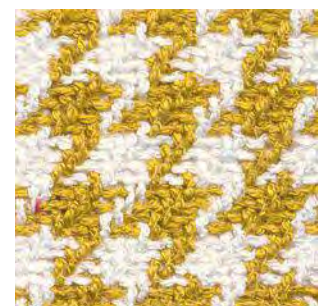
64804



64856



64829



64814

COMPOSIZIONE: 98% POLIESTERE RICICLATO\* 2% ELASTOMERO LYCRA®  
COMPOSITION: 98% RECYCLED POLYESTER\* 2% LYCRA ELASTOMER®  
COMPOSITION: 98% POLYESTER RECYCLE\* 2% ELASTOMERE DE LYCRA®  
ZUSAMMENSTELLUNG: 98% WIEDERVERARBEITETES POLYESTER\* 2% LYCRA®  
COMPOSICION: 98% POLIESTER RECICLADO\* 2% ELASTOMERO DE LYCRA®



HEIGHT: 140 cm

LIGHT RESISTANCE: 6 / 7

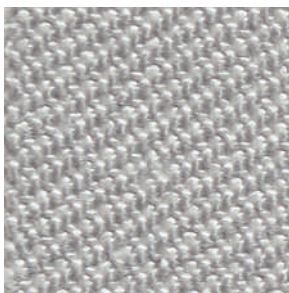
ABRASION: 350 000

WEIGHT: 1470 g / ml

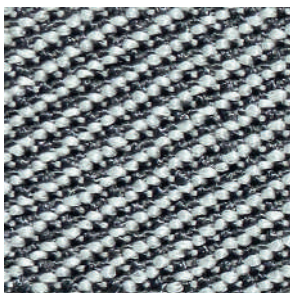
SHRINKAGE: - 2 %

PILING: 4 / 5

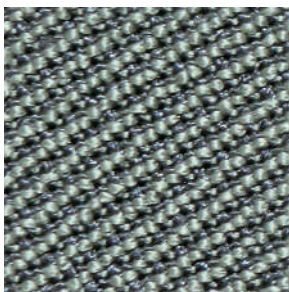
\*Pre-consumer and post-consumer recycled polyester yarns to meet social and environmental requirements at each stage of the supply chain without the use of potentially harmful chemicals.



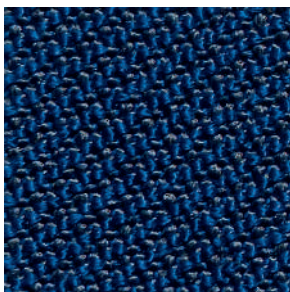
32703



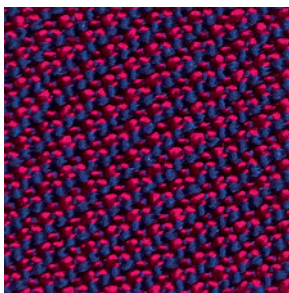
32704



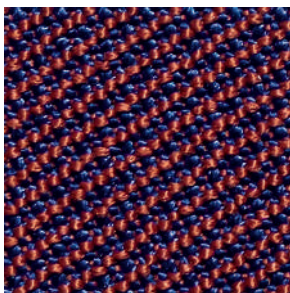
32742



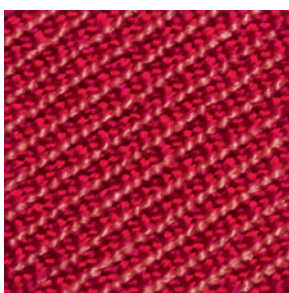
32757



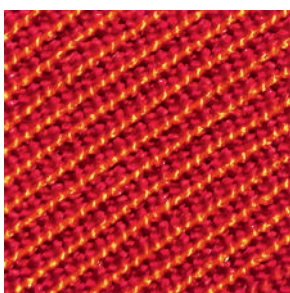
32756



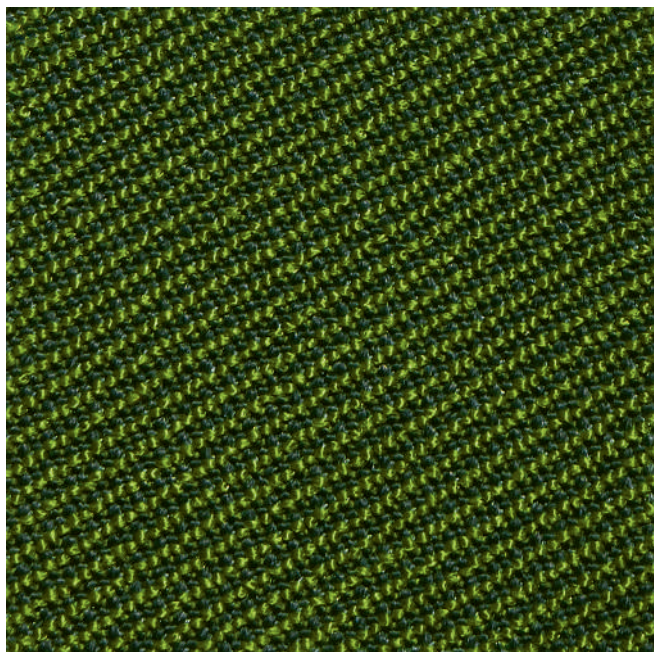
32758



32727



32726



32747